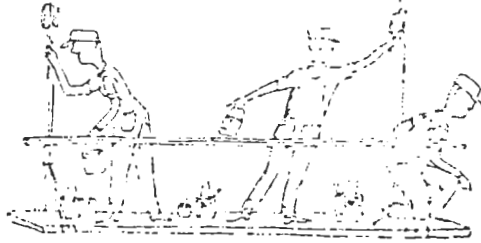
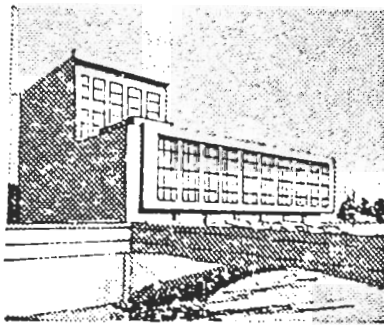

IT'S STIPPLECOTE!

**CEMENT
BASE
PAINT**



For permanent cover on concrete, stucco
and masonry surfaces.

- Available in fifteen shades and white •
- White Portland Cement base • Produces
- a hard weather-resistant surface.



*The best costs less
per year!*

**STIPPLECOTE
PRODUCTS LTD.**

COVERING CAPACITY

When mixed to normal consistency the approximate covering capacity of STIPPLECOTE for TWO coat brushwork can vary from 7 sq. ft. per lb. for rough cast to 20 sq. ft. per lb. for fibre board. Full instructions on the can

**KAIWHARAWHARA
P.O. BOX 228,
WELLINGTON.**
