

In New Zealand, PO Box 38242, Lower Hutt 5042
Call 0800 RESENE, visit www.resene.co.nz
or email advice@resene.co.nz

Resene
the paint the professionals use

In Australia, PO Box 785, Ashmore City, Queensland 4214
Call 1800 738 383, visit www.resene.com.au
or email advice@resene.com.au

soot saver

Gracing the Queenstown lakefront, Eichardt's Hotel has been a part of the scenery since the 1860s, though its current grandeur belies its humble beginnings dating back to a woolshed built by William Rees, the first European settler. With a groundswell of new settlers arriving with the discovery of gold, the small woolshed was converted to a more profitable piece of real estate as the Queen's Arms Hotel, before being acquired in 1866 by Albert Eichardt who developed the land further building the current hotel in 1871. Considered for years to be the leading accommodation in town, it was extended in 1886 and has continued life as a hotel. The lower floor serving as the public bar was severely flooded in 1999 prompting an extensive modification programme with a price tag to match.

Intent on replicating the original façade, the concrete plaster has been repainted in **Resene AquaShield** tinted to a neutral palette of **Resene Merino** (greened off-white), **Resene Parchment** (light beige neutral) and **Resene Soapstone** (barely there cream) complemented by **Resene Enamacryl** tinted to **Resene Rangoon Green** (jungle green) on wooden trim and joinery and grounded by a base of **Resene Lumbersider** tinted to **Resene Arrowtown** (warm earthy neutral).

With the mighty old Earnslaw traversing the lake and emitting free floating soot that slowly covers the CBD, selecting a low maintenance exterior finish was critical. **Resene AquaShield** was deemed the ideal solution to help keep the exterior looking fresh for longer, with its mineral effect finish making it both harder for soot to become ingrained and easier for it to be naturally washed off in rainy conditions.

With over a century of accommodation under its belt, guests know they are in experienced hands.

Building Contractor: Bob Dennison, Skyline Enterprises
Painting Contractor: Richard Daniel, James Wren & Co, Dunedin
Resene: Annette Gin, Queenstown Area Manager



chalk it up



A devastating fire that extensively damaged the old Woolangabba railway hotel necessitated a major rebuilding project. Out of the charred remains rose the new Chalk Hotel, built with a combination of salvaged and virgin materials.

The exterior featuring render and blockwork with a tricky lead based paint system was sealed with **Altex Pre-Prime 167** before topcoating in **Resene Thixalon 5**, a high build coating designed to assist with water repellency while still imparting a texture sympathetic to rough substrates. Hues of **Resene Stack** (armament grey) on main wall areas accented by **Resene Armadillo** (armour grey) on trims wrap an upmarket air around the hotel.

Interior new paperfaced plasterboard is finished in **Resene Zylone Sheen** in **Resene Grey Nurse** (pale grey) and **Resene Silver Chalice** (pewter grey) on the walls combined with a unique ceiling selection of **Resene Snow Drift** (lime porcelain white), giving a touch of warmth overhead.

Like a Phoenix rising from the ashes, the Chalk Hotel is a born survivor.

Building Contractor: Ash Blake, Hutchinson Builders
 Designer: Dirk Arnold
 Painting Contractor: Higgins Painting
 Resene: Brendan Armstrong, Gold Coast Trade Sales Representative



top marks

Varsity Lakes Queensland is home to the innovative **Silver at the Exchange** office complex, the first A grade office facility on the Gold Coast for 15 years. A multi-storey standalone facility fresh to this developing area, the exterior is finished in **Resene Lumbersider** over a substrate of FC sheeting coated in **Resene Concrete Primer** and render coated in **Resene Limelock** to seal in free lime. Vertical sails cleverly protect windows from prevailing winds while adding a unique design element to dress up the monolithic wall areas.

Outside a special colour match, **Resene Double Nullarbor** (granite brown) and **Resene Quarter Parchment** (pearly winter grey) fit well with the natural environment. The neutral palette meanders its way inside in hues of **Resene Half Parchment** (stony beige) and **Resene Alabaster** (blackened white) both applied in **Resene Zylone Sheen** for a low sheen Environmental Choice approved interior finish.

With an A grade office facility, it's a wonder employees in this building don't stay the night.



Architect: Terry Bell, Alan Griffith Architects
 Building Contractor: Glenzeil Construction
 Painting Contractor: David Armstrong and Son
 Resene: Brendan Armstrong, Gold Coast Trade Sales Representative



seventy two



Seventy residential units join streetfront shopping in the Westend Central development on the corner of Browning and Boundary Streets in Westend. Bridging both modern and retro stylings, the extensive street frontage of the complex sells the apartments as a real life billboard. A basecoat of **Resene Lumbersider** has been followed by **Resene Enamacryl Metallic** tinted to **Resene Pure Pewter** (green edged metallic) on the front building joined by **Resene Enamacryl Metallic** tinted to **Resene Platinum** (whitened gold) on the rear building. The combination of the two metallics grounds the front building while providing a shimmering background of light toned metallic. With shops just minutes away, executives can opt for a night in cooking or a quick takeaway on the way through.

Painting Contractor: Proficient Painters
 Resene: Jason Osborn, Queensland Trade Sales Representative

mixed style

This 1936 brick bungalow came complete with a difficult brief as it contained a mixture of styles, Art Nouveau, Edwardian and Art Deco, with a dominating element of Art Nouveau tiled fireplaces. The complex colours of the lounge fireplace combined with orientation to the afternoon sun called for a simple wall treatment of **Resene Quarter Canterbury Clay** (elegant camel). A large window filled one whole wall and was dressed with side curtains in a pattern reminiscent of the style of Charles Rennie McIntosh complementing the main ochre curtains. Reproduction Art Nouveau style "Lily" centre light and lamps provide lighting.

The morning sun lit dining room needed some evening warmth, achieved through the use of **Resene Bardot** (warm yellow) on the walls, echoed in the curtains. The bright tomato red fireplace was softened with an orange and gold frieze on the walls and accessorising with orange cushions and a collection of 1920s Japanese porcelain in hues of orange, gold and yellow. Warm and inviting, this space has quickly become a favoured room of the owners.

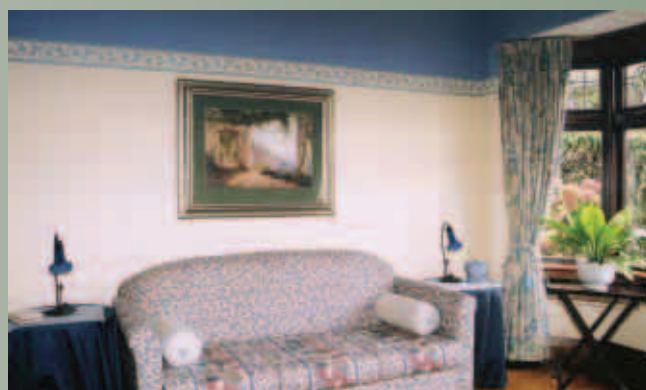
Decorating authentically is being simplified by Design with Style, a company specialising in historic restorations and renovations relating to the Arts and Crafts era of



architecture, who have brought together a host of products to provide a one-stop-shop for period restoration. Resene complements this work, both through the **Heritage Collection** of colours and the ability to provide percentage tints throughout the colour range to match difficult samples.

To access the elements you need to treat your project to the period restoration it deserves, visit www.acstylenz.com.

Designer: Design with Style



piece of history

Arden Lodge in Havelock North is protected by a category 1 historical listing, necessitating extra special care when redecoration is planned. Built in 1926, the historic homestead was designed by the architectural partnership of William Gummer and Reginald Ford, one of only four homesteads they designed in the Hawkes Bay. Sturdily constructed of reinforced concrete and brick with a cavity wall stucco exterior, the years of weathering meant the exterior paint finish was no longer providing the required protection.

Resene X-200 waterproofing membrane was selected as the primary exterior surface finish to help protect the substrate from the ravages of nature. Tinted to **Resene Double Pearl Lusta** (warm cream), the colour fits well with the traditional architecture and colour palette that would have been available at the time of first construction. The creamy finish is complemented by **Resene Lumbersider** satin acrylic tinted to **Resene Canterbury Clay** (muted French beige) on shutters and matching **Resene Enamacryl** waterborne gloss enamel on window joinery and trim. The feature wrought iron balustrading was finished in **Resene Super Gloss Black** for a sleek gloss finish.

Originally an explorer who visited the depths of the Antarctic, Reginald Ford settled down to study architecture in 1906, later becoming president of the NZIA in 1921. His first practice was established with Robert Talboys and following a move to Auckland he partnered with William Gummer, a pairing that won the first gold medal awarded by the NZIA in 1928 for the Auckland Public Library (Remuera).

William Gummer served as the president of the NZIA in 1933 and was well known for his regular wins in architectural competitions. Both partners complemented each other's skill sets with Gummer focusing on design and Ford focusing on business management. They jointly played important roles in the development of the NZIA and training for young architects throughout their professional lives. Both have left their unmistakable talent showcased in New Zealand architecture.

Kowhai Park flanking the eastern bank of the Wanganui River was so named following the planting of a Kowhai tree by Lord Liverpool at the opening ceremony in 1917. Through the work of James McGregor the park became home to an enviable range of trees. His efforts were later recognised by the renaming of the park as the James McGregor Memorial Park just seven years before the land was vested in the Wanganui City Council in 1942.

Today the park's southern end is still dominated by the plantings of James McGregor but has been joined by an intriguing children's playground bursting with colour, shape and activity.

Briefed to make the playground as bright and bold as possible, Resene staff selected hues from the **Resene KidzColour** range complemented by popular brights from the **Resene BS5252** colour range. Working in combination the final palette is a frenzy of high chroma hues that the visiting children love. To keep children safe, all areas were painted in Environmental Choice approved **Resene Lumbersider** satin acrylic.

100% bright and bold, just add some children and this park is complete.

Client: Wanganui District Council
Resene: Kylie James, Wanganui ColorShop



play time



paint set

Spending six months pouring out hundreds of litres of paint sounds wasteful until one discovers what they have been poured onto. Helen Calder has developed a new artistic technique involving carefully planned pours of **Resene Enamacryl** gloss waterborne enamel over composite panel to create her works - a departure from her normal preference of **Resene SpaceCote Low Sheen** waterborne enamel.

The body of work known as Paint Set, first exhibited in Christchurch, suggests both a set of paintings or the action of the paint as it solidifies, definitions that have equal application. The colour 'zips' are the residue of previous layers of paint, the thickness and shape of these determined by the amount of paint poured, the angle of the panel and the vagaries of humidity and heat. The subtle variations of surface become apparent at different angles as does the relief created by the layers of pours. No brushes nor masking tape have ever touched the work.

The bright zips of colour were chosen from the Resene range to represent a spectrum. The dark colour contrast was chosen to strengthen the brilliance of the colour zips. In total there are eight panels each named after the darkest colour, also from the Resene range: Resene Gondola/Resene Blue Marguerite; Resene Bokara Grey/Resene Chetwode Blue; Resene Havana/Resene Lima; Resene Black Marlin/Resene Bitter Lemon; Resene Bunker/Resene Westside; Resene Bastille/Resene Grenadier; Resene Zeus/Resene Cranberry and Resene Rouge. **Resene Enamacryl** is used to achieve the ceramic like quality of the poured surface, contrasting with the velvety quality of the rolled surface. The raised edge of each poured shape and the textural contrast of surfaces becomes apparent at different angles.

The careful layering that comprises the surface of these works is a pointer to the domestic wall's archaeologies of colour, its fashion based histories of (re)painting. A story of walls told in pours.

Artist: Helen Calder



Artists: Sabine and Doug Ford



box beauty

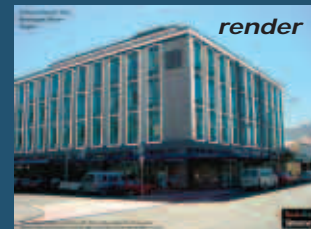
Seeing fewer unsightly traffic boxes around Auckland recently? That might just be because they have been transformed into canvases dressed with Resene colours and the artistry of Sabine and Doug Ford who have motivated local businesses to play their part decorating traffic boxes with art. 42 traffic boxes and over 19 murals are beautifying Auckland suburbs while other Business Associations and the Waitakere City Council have teams of artists working in their areas. While acknowledging there are still many unsightly traffic boxes dotted around the streets, the gradual change from eyesore to artwork isn't going unnoticed.

Once awash in lollipop pastels, Dunvegan House in Napier has been redecorated in a fitting colour scheme. Resene Sonyx 101 semi-gloss acrylic adorns most exterior areas, giving a sheen level that is a little more forgiving on substrate imperfections while still being an easy clean surface. Resene Super Gloss enamel on the steel windows completes the exterior specification.

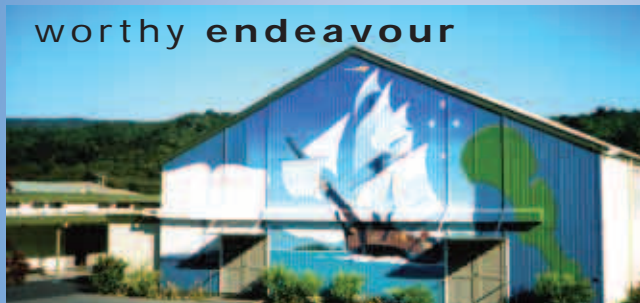
Colour scheme selection was simplified using the Resene RenderRite electronic visualisation service. A photograph of the exterior of the building was pathed and recoloured using electronic Resene colour formulations making it easy to imagine what the colour scheme would look like, well before the painting started. Once the images were viewed, the final selection of Resene Bianca (light cream off-white) on window frames, soffits, penthouse walls; Resene Rhino (smoky grey blue) on right square panels above and below windows and fascias; Resene Licorice on left square panels above and below windows, horizontal bands, pillars, verandah supports and railings; and Resene Jade (summer blue green) on penthouse window frames and sashes was confirmed and painted.

A comfortable coat in appropriate colours has given this building a consistency of style.

Painting Contractor: Allan McGill, PMS Branch Manager; Charles Renata, PMS Contracts Manager; Programmed Maintenance Services
Resene: Richard Chandler, Hawkes Bay Branch Manager



worthy endeavour

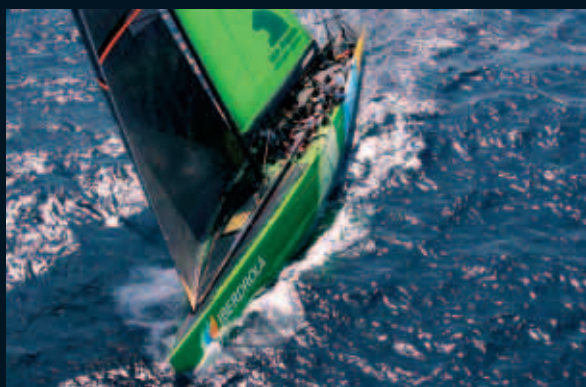


Recreating a College's crest sounds like an easy task, until you find out that the brief calls for a reinvention of the key design elements to fit a wall 8 metres high and 15 metres wide. Thanks to Rick Edmonds the artist using predominantly Resene testpots and some larger cans of Resene Lumbersider satin acrylic, Picton's Queen Charlotte College lost a dull wallspace and gained a realistic pictorial statement featuring a Maori Patu, stylised book, the Southern Cross and Captain Cook's ship the Endeavour. A project not for the fainthearted or faintheaded, this piece of artwork is a deserved source of pride for students and faculty.

Artist: Rick Edmonds. Resene: Bryan Newman, Blenheim Trade Sales Representative

way cool

An Eastbourne home perched above Wellington harbour and drenched in sun, weather permitting, from dawn to dusk is now protected from the harsh environment with Resene Waterborne Woodsman Cool Colour Pitch Black to minimise heat retention in the dark coating improving the lifetime of the finish and substrate. The cool black is complemented by Resene Uracryl 404 in Resene White Pointer on wooden doors and pergolas imparting premium protection for the salt kissed exterior.



hola, hullsome!

The Spanish entrant, Iberdrola, in the America's Cup is resplendent in a palette of 17 hues thanks to Resene Automotive and Performance Coatings.

Resene staff painstakingly matched each hue to exacting Pantone standards in Durepox. Each sample was then sprayed out and flown to Valencia for approval before the careful task of hull painting could begin. The Spanish shore crew are rapt with the result so it's now up to the racing team to make the most of their new boat.

equipped

Australian equipment suppliers have warmed to Resene waterborne products using them to decorate the extensive surface areas of their equipment. Patrick Container Cranes are being decorated in orange Resene Hi-Glo gloss acrylic, which is impressive when you consider each crane requires approximately 1800 litres of paint! That's a lot of paint on a single crane.

Also getting in on the act, thousands and thousands of litres of Resene Waterborne Smooth Surface Sealer has been supplied for use as scaffold identification and to maintain general aesthetics.

Scafflink changed from a traditional enamel dipping system to more environmentally responsible systems. Quicker dry times and easy clean up are also huge benefits.

While both products were designed primarily for decorative use, increasing use in the equipment field reinforces the flexibility of application of these products.



Resene: Dave Sargent, Queensland Sales Manager

well oiled

Like shining your shoes or polishing your interior woodwork, oiling your deck and furniture regularly will keep it looking its natural best while providing protection against the ravages of water, fungi and ultraviolet light.

Popular amongst those who prefer the lightly oiled look to the more heavily pigmented stain finish, new **Resene Furniture and Decking Oil** is quick and easy to apply. Recommended for annual application to decks and furniture, the product will assist with water repellency and help to maintain timber in good condition.

See Data Sheet D503 and specification sheet 4e for technical information.



circular colour

Sir Isaac Newton created the first colour wheel hundreds of years ago by splitting white sunlight into red, orange, yellow, green, cyan, and blue, then connected the ends of the colour spectrum together to demonstrate natural colour progression.

A century later **Johann Wolfgang Goethe** studied the psychological effect of colours and discovered that some colours gave a feeling of warmth and others a feeling of coolness. Using these results he created a colour wheel based on the psychological effect of each colour with one side being the plus side of red, orange and yellow and the other side being the minus side of green, violet and blue.

Colour theory was developed further by **Johannes Itten**, a Swiss colour and art theorist at the Bauhaus. He modified the colour wheel using red, yellow, and blue as the primary colours and modified these further to twelve hues including secondary and tertiary colours.

The Resene colour wheel, introduced some



J. W. Goethe's colour wheel

years ago and still available today, works on the same theories as those developed by Johannes Itten.

The colour wheel is designed to simplify colour selection, allowing users to work to basic colour scheme guidelines, such as complementary, split complementary and analogous, to quickly develop colour schemes.

For your copy of the Resene colour wheel visit your local Resene ColorShop or contact your local Resene representative. For more information on colour wheels, see the Resene website www.resene.co.nz/pdf/ColourWise/colourwheel_newsletter.pdf.



J. Itten's colour wheel



The Resene News now extends beyond these printed pages



Check out more projects online at www.resene.co.nz/archspec/products/index.htm

your name here

If you would like your next project to appear in the Resene News or on the Resene website in the Products in Action section, complete a Resene News submission form and send it in to Resene Head Office with photographs of the nominated project. Copies of the submission form are available from your local Resene Representative or ColorShop, or call 0800 RESENE (NZ) or 1800 738 383 (AUST) for a copy. To be eligible for inclusion the majority of the project must be completed in Resene paint.

forging links

Resene regularly gets asked by clients as to whether they can borrow the Resene logo to use in their advertising to show their customers they use and recommend a quality brand and whether they can link to our website.

The answer to both is yes, provided the logo and/or link are appropriate. If you wish to use the Resene logo, please contact Resene Marketing or drop an email to advice@resene.co.nz (NZ) or advice@resene.com.au (AUST) with the subject header attn: Marketing - logo use.

Links to the Resene website can be created in minutes. To link to the Resene NZ website, visit: www.resene.co.nz/link_to_resene.html
To link to the Resene Australia website, visit: www.resene.co.nz/link_to_resene_australia.html

Or if you want to link direct to another area of the Resene website, such as the colour library, you are welcome to do so.

Return links are available by completing a **Professional Wanted** listing and getting your business advertised in our Professionals Wanted section and/or by submitting a story for the Resene News - if it fits into the publication a copy will also appear on the Resene website.



wet wise



The daily rigours of bathrooms, laundries and kitchens results in these areas being prone to bacteria and mould buildup. Recognising that these areas sometimes require extra special treatment against these organisms, Resene has created new Resene SpaceCote Low Sheen Kitchen & Bathroom combining the benefits of the popular low sheen waterborne enamel with added anti-bacterial silver protection and the mould protection of MoulDefender.

This breakthrough Environmental Choice approved product may be used to bring enamel style toughness to broadwall areas, allowing you to get a low sheen finish with added protection. While primarily designed for interior broadwall use, this product is so adaptable that it may also be used on joinery and trim.

Anti-bacterial silver protection was chosen because it is a safe and healthy method of deodorising and sanitising surfaces that come in contact with skin, food and water.

See Data Sheet D311K for more information on Resene SpaceCote Low Sheen Kitchen & Bathroom.



freespace

To help our clients find more customers we introduced a **Professionals Wanted** listing section a couple of years ago, which allows you to list your company for free.

It's similar to many of the web directories available but instead of charging you for the privilege you can be involved for free. The benefit for you is free advertising and the benefit for your potential customers is they can find you easily from the comfort of their own home.

If you aren't one of the hundreds who have already registered your business then you should complete a 'Professionals Wanted' form available from any Resene ColorShop or if more convenient, jump online to www.resene.co.nz/Professionals/add-new-email-form.jsp and complete the online form.



dust cover

Bare industrial and domestic concrete floors can be a dust trap becoming increasingly difficult to clean as dust collects in the undulations of the surface that are but invisible to the naked eye. Concrete surfaces are therefore best protected early in their service life, before ongoing maintenance becomes difficult.

New Resene Cemseal is a clear concrete sealer and dust coat, a non-decorative coating designed for use on interior and exterior industrial and domestic concrete floors and trafficable areas where a low cost, easily applied and maintained method of controlling concrete dusting is required. Quick and easy to apply, Resene Cemseal imparts clear protection to a wide of concrete applications.

See Data Sheet D504 for more information.

isolater-ed



Viewing colours on colour charts can be very disconcerting with stronger hues reflecting their inner beauty onto less dazzling neighbouring hues, making it difficult for even the most experienced colour professional to assess the true hue.

Resene has for many years offered customers Resene grey isolators to screen out the distractions of neighbouring colours when viewing charts. With the introduction of the new **Multi-Finish range**, chip sizes have increased dramatically.

In line with this change the **Resene grey isolator** has been updated to include two diecuts - one designed for viewing charts with smaller chips and the other designed for viewing charts with larger chips.

Be sure to isolate your colour the next time you make your colour selections, to ensure you are seeing the true beauty of the colour.

Some colour charts, such as **The Range** series, come complete with inbuilt grey isolators. For those that don't, the new-style Resene grey isolators are available free from Resene ColorShops.



multi-colour

Following two decades of extensive use, the Resene Multi-Finish range has been expanded to near double its size, taking in the best of the existing Multi-Finish range plus favourite selections from **The Range 2000-2007** fashion range. The new Resene Multi-Finish range covers a rainbow of over 1000 hues showcased in a collection of 56 palettes, each featuring 18 large colour chips for easy colour selection.

Total Colour Codes, tones and reflectance value information is handily located on the back of each palette to make accessing this colour information quick and easy. The full new Multi-Finish range is available in popular Resene drawdowns, self-adhesives and testpots, while electronic colours are available online in the Resene swatch library, Resene EzyPaint virtual painting software and the Resene AutoCAD colour books.

The new Resene Multi-Finish range palettes will be available from Resene ColorShops and representatives once stocks of the older range are exhausted. The collection is showcased on individual palettes, large charts for wall hanging and two fandecks for quick on-site selection and as a handy library reference. Check with your Resene ColorShop or representative to see which tool suits your work.

A rainbow of hues covering the gamut of colourspace, this extensive collection is a must-have for specifiers.

in spec

Specifying Resene products is easy for subscribers to Natspec (AUST) and Masterspec (NZ).

Both specification systems include a Resene branded section enabling specifiers to quickly and easily identify the Resene paint system for the project, then insert them into the main specification document before quickly printing and collating with Resene drawdowns for a professionally presented paint specification.



right read times five



Issue 5 of **Habitat** magazine, coloured by Resene, is out now. This edition is an eclectic mix showcasing blending modern with heritage recognising that we seldom have a clean palette to work from so must combine the best of the new with elements of the traditional.

See your local Resene ColorShop for your copy. For copies of stories from previous **Habitat** magazines, see the full archive of **Habitat** stories on the Resene website www.resene.co.nz (NZ) or www.resene.com.au (AUST).

golden apologies

The Nanak Sar Sikh minerettes featured in Resene News Issue 2, 2006 were skillfully painted by **Tavan Cultura**.

Our apologies that we didn't acknowledge their talents in the original story.



Incorrect Mailing If you are receiving multiple mailings or you would like us to change your mailing details, please call 0800 RESENE (NZ), email us at advice@resene.co.nz or fax 04-577-0664 (NZ) giving the current address where you are receiving mail and the change/s required.