

# EMERALD CUTS

A CHANGE is in the air for 2013, after last year's fiery tones of tangerine and pink. This year emerald green is on the fashion cards and a popular hue with the SS14 collections. The jewel-rich tone, although less intimidating than previous year's shades, there is no stopping celebrities and top designers from incorporating the hue as a wardrobe staple for 2013.

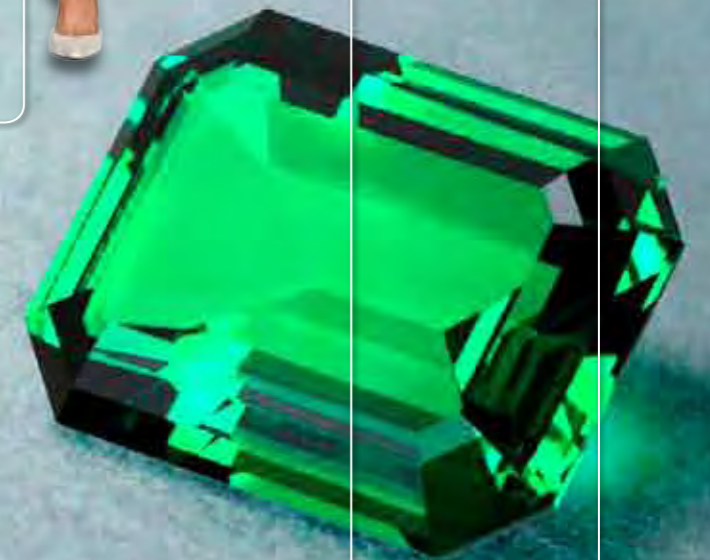
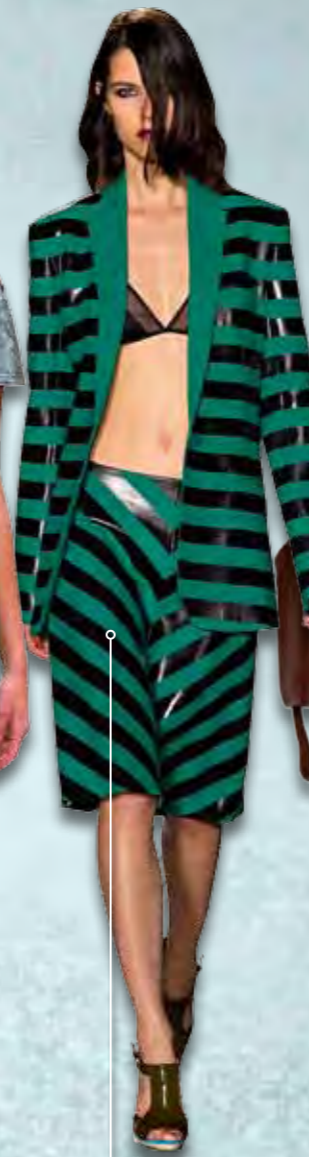
Enhancing our sense of well-being, this vivid, leafy green inspires insight and promotes balance and harmony. Associated with the precious gemstones, Emerald could be defined as sophisticated and luxurious. There is no other colour that could possibly express regeneration like a succulent green. Throughout history, the colour Emerald has continued to sparkle and dazzle the fashion and home interior world.

For several seasons now, green hues have been influencing collections and have even made appearances on the red carpet. The ability to wear Emerald for every occasion only adds to its classical and elegant appearance. Knitwear, sportswear and ties will also see Emerald take off. Not only is the colour sophisticated but takes on a very balanced role and livens up colours across the colour wheel and will no doubt make a bold statement beyond spring/summer.

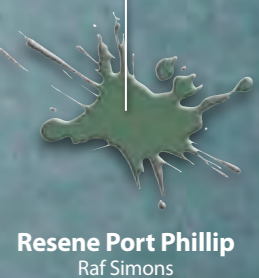
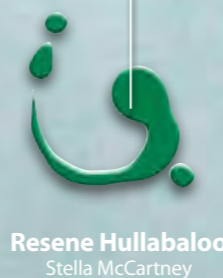
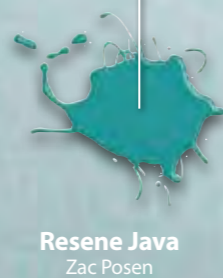
Zac Posen's eveningwear collection proved that various shades of Emerald could be incorporated into one garment. His strapless, sculptured gown was a dramatic highlight of the show. A standout designer was Stella McCartney, with her take on the hue that could inspire everyone to splurge with this work day pantsuit.

An all-time favourite, Burberry, took Emerald to a new high with their seamless segue from blue to green. Their metallic silver capped cape and transparent rouge jelly bag were the ultimate accessories to pair with the fashion forward look.

Rachel Zoe's addition of the brown accessories wasn't the best choice, unlike Michael Kors glitter Emerald short shorts and black mini briefcase, with a three-toned horizontal striped blazer which is a winning combination. Menswear also caught the Emerald bug with Raf Simons take on the traditional suit integrating the metallic trend for his cut-out short suit.



-  Resene Java
-  Resene Hullabaloo
-  Resene Salem
-  Resene Retro
-  Resene Seeker
-  Resene Tree Frog
-  Resene Windfall
-  Resene Port Phillip



Colours available from Resene ColorShops

[www.resene.co.nz](http://www.resene.co.nz)

0800 737 363