

Desert Sand

Cool tones of ghost whites, mixed with nut-browns and a splash of colour are resounding colour palettes for several New Zealand and International Winter Collections.

The impact of colour can be seen in several forms of colour associations, where colour can be seen as either a symbol or a sign. While China's colour of good luck is red, red is also used to communicate visually, for example stop signs are red. Neutral tones and cream hues with the additive of black create feelings of sophisticated glamour with hints of simplicity and earthiness, leaving the cold winter at the door.

Burberry's show brought the wild winter indoors at their show in London, letting it snow on the catwalk creating a perfect backdrop and ambience to their woolly collection. Black is back for yet another season, I know, I know, "how cutting edge", you say? But these sleek creations with pops of cobalt blues and stark reds who could be bored this winter?

Representing a sentiment of calm and understated elegance, beige is seen throughout catwalks this season. Richer than white but lighter

than brown, these sandy creams carry a softness and cleanliness to each garment. Biscuit beiges with coffee browns not only suggest the best mid morning snack but also creates visions of a sophisticated earthy and organic combination seen at New Zealand Fashion Festival earlier this month by designers Nom*D, Trelise Cooper and Sable & Minx.

On the international scene, earthy undertones and cream mattes are observed at shows such as Versace, Herve Leger and Zac Posen. Adding a touch of Mother Nature to tailored basics, Herve Leger designed a very fitting bandage dress in warm neutral beige with nut-brown leather trims. Versace showed that Menswear could also pull off the colour palette with a custom-made off white suit with a brown tie and loafers. [ap](#)

1. Resene Foundry

2. Resene Half Alabaster

3. Resene Half Joss

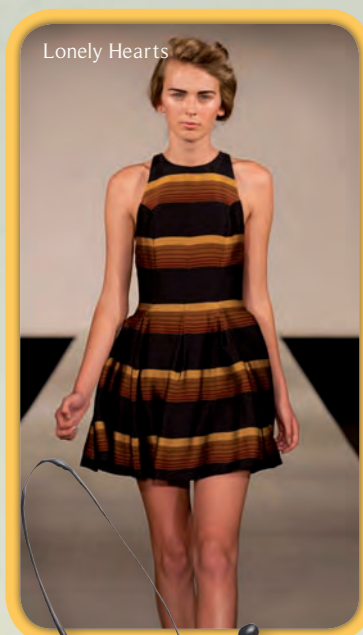
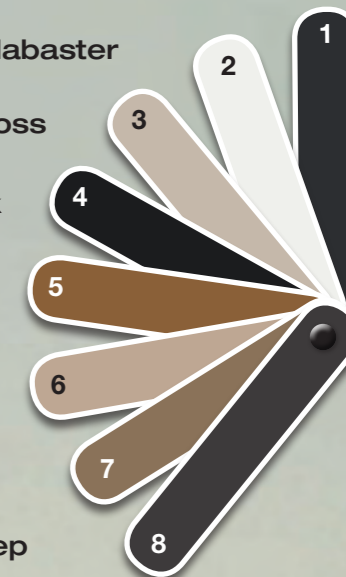
4. Resene Blackjack

5. Resene Triumph

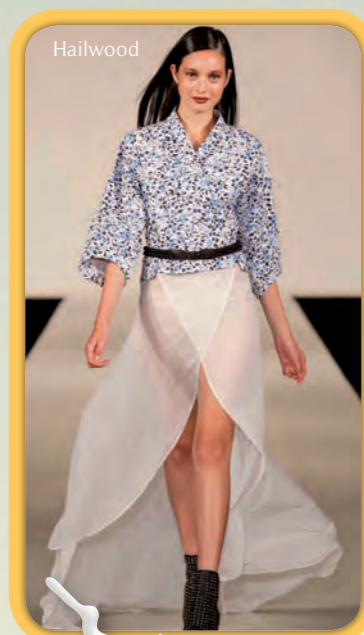
6. Resene Half Rickshaw

7. Resene Ignition

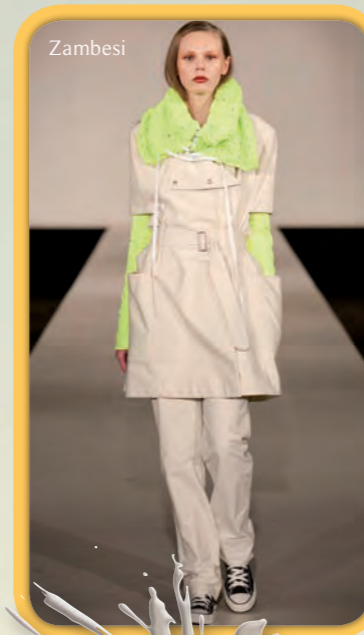
8. Resene Black Sheep



Lonely Hearts



Hailwood



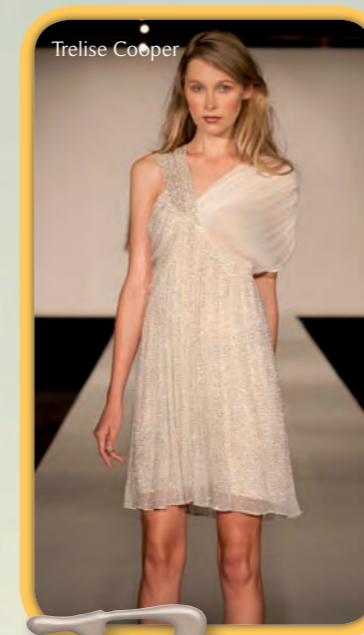
Zambesi



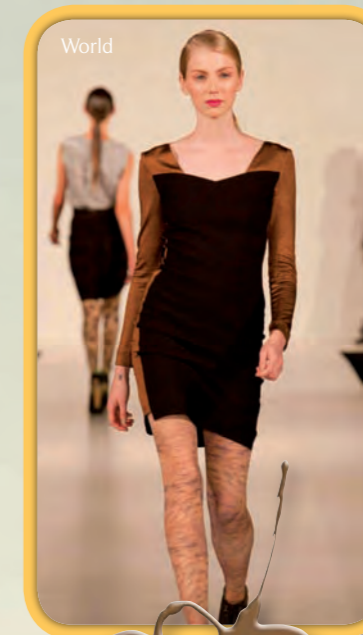
Helen Cherry



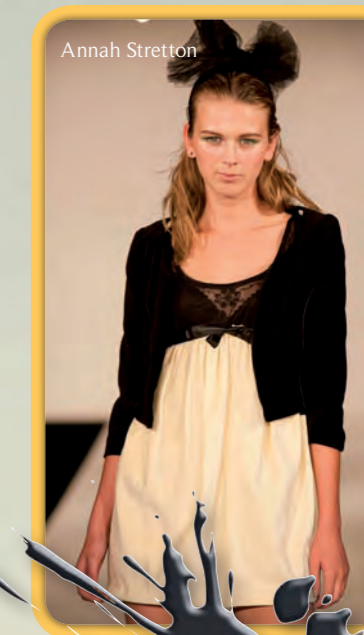
Sable & Minx



Trelise Cooper



World



Annah Stretton

Lonely Hearts

Taking a classic 50's approach to winter, this a-line above the knee housewife dress mixes the dark tones of Resene Foundry, with golden brown horizontal stripes. The shadowy charcoal that is full of igneous warmth makes this masterpiece a balancing act with the cinched waist and the open shoulders creating an ultimate hourglass figure.

Hailwood

RESENE HALF ALABASTER is a perfect match to Hailwood's somewhat oriental themed skirt and blouse outfit. With the wrap skirt similar to the tail hem that has been seen in recent trend watches, and the Kimono style blouse, the combo helps to lighten up the darkness of winter. Resene Half Alabaster is a hint of blackened white, an understated backdrop.

ZAMBESI

Pops of colour all around. How could you be down this winter with Zambesi's cool blend of lime with Resene Half Joss colour which takes on a smoke infused beige, chic and composed. Often mixed with greens or blackened whites, Resene Half Joss is a safe base option to encourage pops of colour to be seen this winter.

Helen Cherry

With a heavy forceful mood try Resene Blackjack colour that gives a leathery carbon look to the classic black. Seen here at Helen Cherry's runway show at New Zealand Fashion Festival, no one can do without black in their wardrobe this winter or in fact any season, so team a Helen Cherry Resene Blackjack jumpsuit with gold accessories to add to the wardrobe essential list this winter.

Sable and Minx

This seriously silky soft molten copper toned gold dress matched with Resene Triumph colour is sensual and hot this winter. Mixed with a black tassel necklace and high heels gives a subtle elegance to daywear that adds warmth and earthy tones to your winter wardrobe.

Trelise Cooper

Simple, discreet beige, infused with warm intimacy Resene Half Rickshaw is seen in the Trelise Cooper show at New Zealand Fashion Festival this winter. Sparkling sequins and the look encompass this light evening dress that provides a contrast to the classic LBD.

World

Light the fire this winter with Resene Ignition as its soft weathered gold that becomes the modern day antique mixed with rustic light browns and deep blacks creates the perfect glam look this winter.

Annah Stretton

Annah Stretton's winter collection at New Zealand Fashion Festival also teamed up these neutral tones with deep tone blacks. Resene Black Sheep colour takes on a dark Kenyan coffee – warmed up and full of black shadowed depths, highlighting the lower half of the high-waisted beige dress.