

Resene

Exterior Woodcare



the stains the professionals use



Resene Waterborne Woodsman

Resene Waterborne Woodsman (see Data Sheet D57a) is the benchmark for exterior stains, exhibiting excellent mould resistance and durability while showcasing the timbers' natural appearance. It is available in a wide range of colours with many also many also available in a CoolColour option (which are marked with 'cc' on the chart) Resene Waterborne Woodsman is ideal for use on a wide range of exterior timber projects including weatherboards, dressed and rough sawn timber, fences, beams, plywood and profiled sheets.



Cherrywood™cc W D WD020



Timberland™cc W D WW0815



Resene Woodsman Decking Oil Stain

Resene Woodsman Decking Oil Stain (see Data Sheet D57D), is a waterborne, modified, oil-based stain developed especially for new and weathered decking. All colours marked on this chart with D are available in Resene Woodsman Decking Oil Stain. Selected colours are also available in a Resene CoolColour version.



Jarrah Tree™cc D WW0804



Dark Oak™cc W D WW7



Resene Woodsman Wood Oil Stain

Resene Woodsman (see Data Sheet D57) is a traditional solventborne stain. It is highly versatile and is ideal for most exterior timber surfaces such as weatherboards, decking and furniture. Depending on the colour selected, timber coated in Resene Woodsman Wood Oil Stain will require recoating every two to three summers. All colours on this chart marked with W and selected CoolColours are available in Resene Woodsman Wood Oil Stain.



Japanese Maple™ W D WD017



Cedar™cc W D WW600



Resene Woodsman Whitewash



Resene Cherrywood



Resene Natural Wood Oil

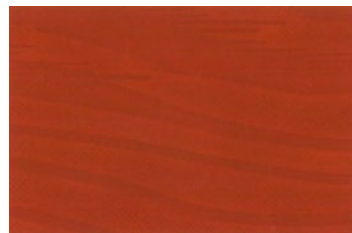


Resene Crowshead

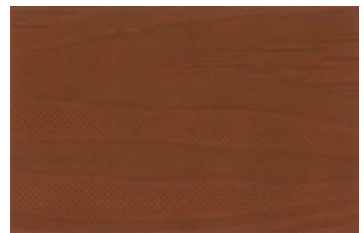


Resene Woodsman Natural Wood Oil

Resene Woodsman Natural Wood Oil (see Data Sheet D541) is a unique, highly penetrative, timber oil stain suitable for both interior and exterior use. It is available in the full Woodsman colour range (including CoolColour options) and a select range of natural and contemporary colours, including a clear finish (which is limited to interior and exterior elevations that are not subject to UV light, such as soffits). It is based, in part, on renewable resins is waterborne and straightforward to apply.



Whero™ W D WD035



Oiled Cedar™cc W D WW028



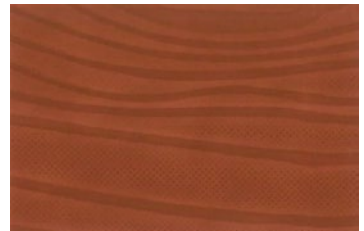
Resene Woodsman Whitewash

Resene Woodsman Whitewash is a waterborne, easy to apply whitewash stain suitable for new and weathered exterior timber, including most cladding and landscape features. It can be coloured to Greywash shades.

Note: it is not suitable as a decking or furniture finish.



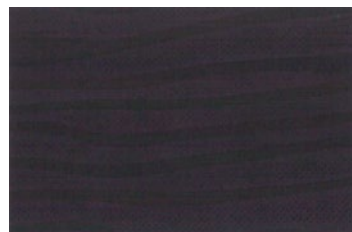
Tamarind™cc D WD006



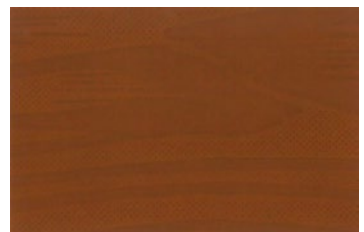
Kwila™cc W D WW0803



Woodsman Whitewash



Jacaranda™cc D WD019



Warm Kwila™cc W D WW0817



Nutmeg™**cc W D** WW16



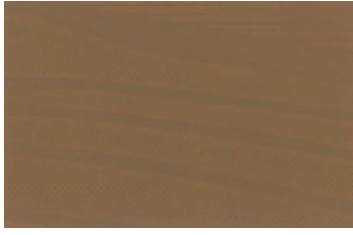
English Walnut™**cc W D** WW8



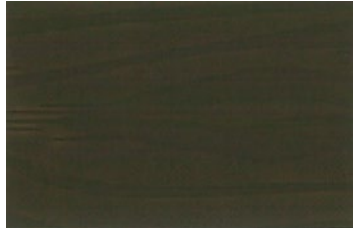
Shadow Match™**cc W D** WW0808



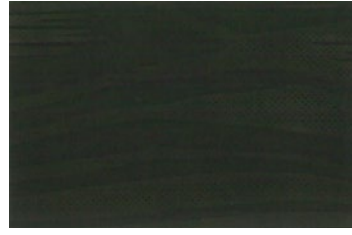
Pitch Black™**cc W D** WD039



Pickled Bean™**cc** WW18



Treehouse™**cc W D** WD037



Crowshead™**cc W D** WD001



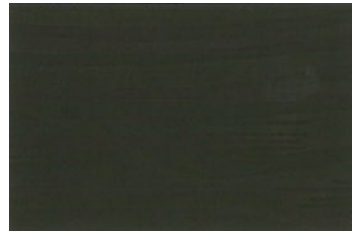
Charred Black™**cc D** WW0801



Limed Oak™**cc** WW13



Bark™**cc W D** WW0810



Banjul™**cc W D** WD004



Tiri™**cc W D** WW0811



Resene Shadow Match



Resene Dark Oak



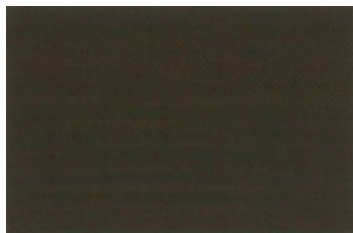
Resene Natural



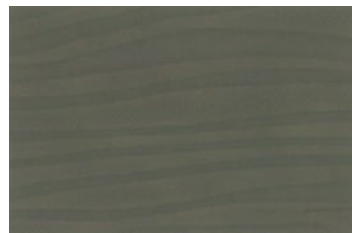
Resene Pitch Black



Driftwood™**cc W** WD012



Bushtrack™**cc W D** WW0812



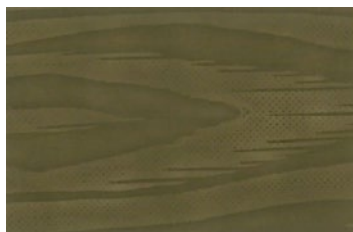
Iroko™**cc W** WD005



Smokey Ash™**cc** WW22



Uluru™ **W** WW0814



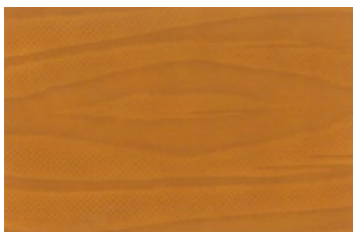
Limed Gum™**cc** WW12



Equilibrium™ WW0816



Riverstone™ WW0805



Heartwood™**cc W D** WW0809



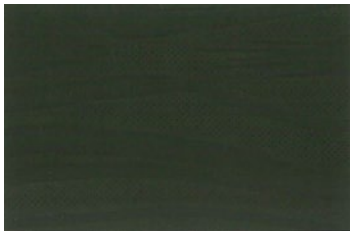
Natural™**cc W D** (shown on Cedar) WD026



Natural™**cc W D** (shown on Pine) WD026



Bleached Riverstone™ WW0820



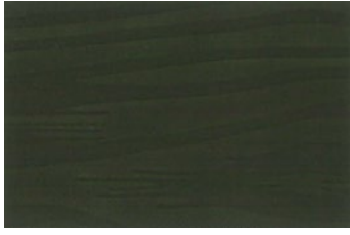
Canopy™**cc W D**

WW0819



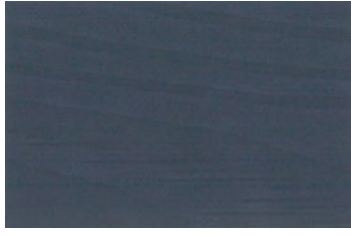
Woody Bay™

WD038



Touch Wood™**cc W D**

WD036



Skywater™**cc**

WW0807



Rangitoto™**cc W D**

WD032

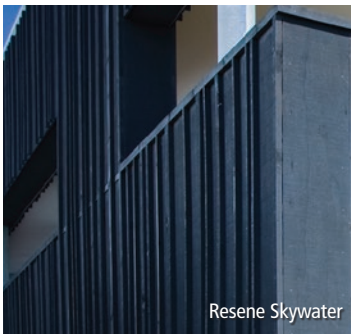


Silvered Grey™**cc**

WW0802



Resene Tiri



Resene Skywater



Resene Kwila Timber Stain

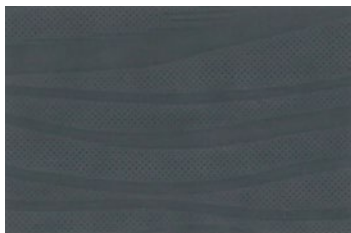


Resene Furniture and Decking Oil



Evergreen™**cc W D**

WW0813



Bleached Cedar™**cc**

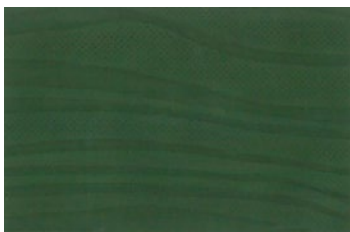
WW400



Kwila Timber Stain

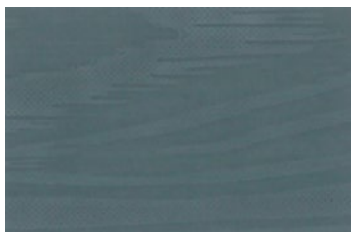


Furniture and Decking Oil



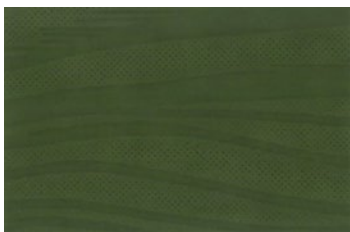
Earthsong™**cc W D**

WW0818



Pickled Bluewood™

WW19



Grey Green™**cc W D**

WW9



Limed Ash™**cc**

WW11



Resene Timber and Furniture Gel

Resene Timber and Furniture Gel (see Data Sheet D505) is a non-drip, easy to apply, waterborne, gel-like stain designed for use on a wide variety of new and weathered timber furniture. It is suitable for interior use and is available in a limited range of colours, including Whitewash. Assess the condition each Spring and reapply to weathered areas as needed (typically the top of an outdoor table may require a maintenance coat, whilst the sides not).



Resene Furniture and Decking Oil

Resene Furniture and Decking Oil (see Data Sheet D503) is quick and easy to apply, semi-transparent oil for exterior timber. It will assist with water repellence and help maintain timber in good condition. Recommended as a single coat application and will typically require annual re-application.



Resene Kwila Timber Stain

Resene Kwila Timber Stain (see Data Sheet D501) is a solventborne timber stain designed for application to kwila and other hardwoods, both new (after 8 – 12 weeks exposure) and old, weathered kwila. It will rejuvenate and enhance, as well as protect your hardwood timber deck or outdoor furniture. This finish will typically require maintenance after one or two summers. Note: Not recommended onto pine or similarly hued timbers.

Key

cc = All colours on this chart marked with **cc** are also available in Resene CoolColour™ technology.

W = Also available in Resene Woodsman Wood Oil Stain.

D = Also available in Resene Woodsman Decking Oil Stain.

All colours, except the Natural chip on cedar, are shown as they would appear on pine. Colours will appear different on different timbers – always test your colour on an offcut before starting the main project.

Keep your paintwork cooler with a Resene CoolColour™

Resene CoolColour looks like a normal colour but thanks to special pigment technology it reflects more of the sun's energy, so it doesn't get as hot as a standard colour would. Resene CoolColour technology is available in a range of Resene premium paints and stains, including the Resene Woodsman range of timber and furniture stains and is suitable for a wide range of exterior projects, especially where dark colours are planned.

CoolColours help reduce heat related stress on timber (including cupping and warping) but will not eliminate it entirely.

Find out more about how CoolColour technology can help protect your home here.



The final finish will vary depending on the timber you are staining. Always view a physical sample before making your final choice and try out your colour on a representative sample of the timber you intend to use before completing your full project. Stains require regular maintenance. While this maintenance is required more regularly for stained surfaces than painted surfaces, the lower level of preparation required makes maintenance work easier to complete.

Welcome to Resene Woodcare

The Resene Woodcare range offers DIY and professionals wood stains and coatings suitable for almost every interior and exterior timber application. The woodcare colours shown on this woodcare chart are available in **Resene Waterborne Woodsman** penetrating oil stain and **Resene Woodsman Natural Wood Oil**. Whilst a selection of colours are available in **Resene Woodsman Decking Oil Stain**, **Resene Woodsman Wood Oil Stain**, and **Resene Timber and Furniture Gel**.

Choose the Resene Woodcare product best suited to your project:

	Recommended System	Alternative System	Notes
	2 coats of Resene Woodsman Natural Wood Oil	2 coats of Resene Waterborne Woodsman	Woodsman Natural Wood Oil has a wide palette of colours that highlight cedars' natural appearance and hue. Furthermore, it penetrates deeper into cedar, resulting in a more natural appearance. Both are best applied using a good quality synthetic bristle brush, such as the PAL Legend.
	2 coats of Resene Waterborne Woodsman	2 coats of Woodsman Wood Oil Stain (Solventborne)	Waterborne Woodsman is our most durable wood stain, however for old and badly weathered timber, Woodsman Wood Oil Stain will perform better. Both are best applied using a good quality Synthetic bristle brush, such as the PAL Legend.
	2 coats of Resene Woodsman Natural Wood Oil	2 coats of Resene Waterborne Woodsman	Before coating thermally modified timbers check the labelling and coating instructions before proceeding.
	2 coats of Resene Waterborne Woodsman	2 coats of Woodsman Wood Oil Stain (Solventborne)	If staining old and weathered timber, Woodsman Wood Oil stain, which is solventborne could be used as the first coat before applying a coat of Waterborne Woodsman after 10 days (to allow for solvent evaporation). Both are best applied using a good quality synthetic bristle brush, such as the PAL Legend.
	2 coats of Woodsman Decking Oil Stain	2 coats of Woodsman Wood Oil Stain or Resene Kwila Timber Stain (both are Solventborne)	Allow 8 – 12 weeks for hardwood timbers to weather so the stain can penetrate more easily, before scrubbing/ washing with Resene Timber and Deck Wash. This ensures optimal penetration. Both can be applied using the PAL Deckmaster or Lambswool applicator pad. A quality brush for cutting into edges etc. will also be needed.
	2 coats of Woodsman Decking Oil Stain	2 coats of Woodsman Wood Oil Stain (Solventborne)	Unlike hardwood decking it is preferable to apply stains as soon as practical. Apply as per hardwood decking above.
	1-2 coats of Resene Furniture and Timber Gel	2 coats of Woodsman Wood Oil Stain or Resene Kwila Timber Stain (both are Solventborne)	Resene Timber and Furniture Gel has a gel-like consistency to reduce splashes. Allow time to weather as per hardwood decking above and be mindful of tannin bleed onto concrete, pavers etc. Assess condition in Spring and re-apply to weathered areas (usually tops of tables etc) as needed. Both are best applied using a good quality synthetic bristle brush
	1-2 coats of Resene Furniture and Timber Gel	2 coats of Woodsman Wood Oil Stain (Solventborne)	As above for hardwood furniture, however test colours on the actual timber before applying, often colours that look great on hardwood do not on pine and vice versa.



Preparation

All surfaces must be clean and dry and free from dirt, dust and loose fibres prior to staining or applying a coating. Treat moss and mould using **Resene Moss & Mould Killer** (see Data Sheet D80).

It is recommended that exterior timber surfaces, including previously stained timber are washed and / or scrubbed using **Resene Timber and Deck Wash** (see Data Sheet D813). It is a powerful cleaner that removes degraded and weathered timber as well as weakly adhering stains and coatings. Additional sanding may also be needed.

Careful water blasting (at a pressure setting that will not damage the timber) is a preparation option in some situations, for example staining weathered pine fencing, landscape features and decking as well as hardwood decking.

Do not water blast cedar or similar easily damaged timbers.

Many recently applied coatings to exterior timber, particularly cedar are formulated with mineral oils. These are notoriously difficult to overcoat, the exception being Resene Woodsman Natural Wood Oil, provided the surface has been subject to direct weathering, is thoroughly cleaned using Resene Timber and Deck Wash, and is re-stained with a colour of similar strength (and therefore TSR).

For more information on how to apply and use Resene Woodcare, check out the following links:



Staining weatherboards



How to stain a deck



How to rejuvenate outdoor furniture



Enjoy the Resene Promise of quality



Enjoy the Resene Promise of quality on a wide range of Resene premium paints.

Be PaintWise



Minimise the impact of your decorating on the environment by recycling your paint containers.

1800 738 383
resene.com.au

Resene
the paint the professionals use

0800 737 363
resene.co.nz

© Copyright Resene Paints Ltd, February 2007. Accurate reproduction of the colours shown in this colour range is only available using genuine Resene premium products, tinters and formulations. These are not available from other manufacturers or retailers. Unauthorised use of Resene colours and colour names breaches Resene's copyright and trademark rights. Colours may appear to vary with different gloss levels, lighting, substrate texture and application method and technique. Colours are as close as printing processes allow. Always view a physical sample before making your final choice and try out your colour on a representative sample of the timber you intend to use before completing your full project. Please recycle.



C112694 - 10/25