

★☆☆ Difficulty level ★ easy ★★ moderate ★★★ challenging

Resene art with Mark Rayner – 20

### You will need:

- Cloth
- Old picture frame with glass.
- Paintbrushes
- Resene Testpots in the following colours: Resene Blank Canvas, Resene Bright Spark, Resene Christine, Resene Fahrenheit and Resene Nero
- Resene Waterborne Smooth Surface Sealer
- Sandpaper



#### Step one

Remove the glass from the frame and clean with a damp cloth.



#### Step two

Using an artists' brush, paint nine rectangular shapes onto the glass, as shown, using Resene Bright Spark.



#### Step three

Before the paint has a chance to dry, paint nine inner rectangles using Resene Christine – don't worry if the paint mixes slightly.



#### Step four

Paint nine more inner rectangles using Resene Fahrenheit, as shown. Again, allow the paint to mix slightly. Leave to dry for two hours.



#### Step five

Apply two coats of Resene Blank Canvas over the glass, as shown, leaving each coat to dry for two hours.



#### Step six

Lightly sand the picture frame to provide a 'key' – this will help the sealer to adhere better.



#### Step seven

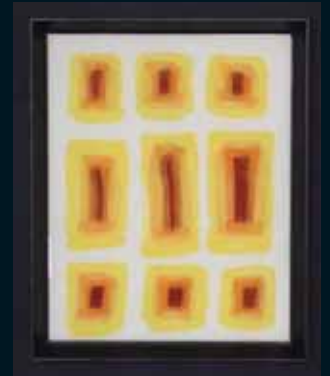
Apply one coat of Resene Waterborne Smooth Surface Sealer to the picture frame and allow to dry.



#### Step eight

Apply two coats of Resene Nero to the picture frame, allowing two hours for each coat to dry. Place the glass 'back to front' in the frame, allowing the reverse painting to show through.

Use a few Resene testpots to paint in reverse on glass to create a unique piece of abstract art.



To get the look:

Mark painted the background wall with Resene Zylone Sheen tinted to Resene Jaguar.



Other ideas:

For a softer look try using a selection of pastel colours from the Resene Multi-finish colour range.

For more ideas and inspiration visit your local Resene ColorShop or [www.resene.co.nz](http://www.resene.co.nz) or [www.resene.com.au](http://www.resene.com.au).

Check out our special Artists section online [www.resene.co.nz/artists/artists\\_canvas.htm](http://www.resene.co.nz/artists/artists_canvas.htm) or [www.resene.com.au/artists/artists\\_canvas.htm](http://www.resene.com.au/artists/artists_canvas.htm).