

Use a selection of Resene greens to create this simple landscape painting.

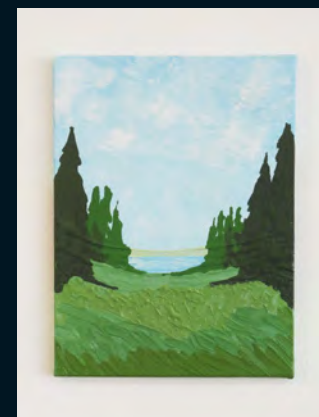
★★★ Difficulty level ★ easy ★★ moderate ★★★ challenging

Resene art with Mark Rayner – 78

You will need:

- Paintbrushes
- Primed artists' canvas
- Resene testpot roller
- Resene testpots of Resene Alabaster, Resene Dell,

Resene Forest Green, Resene Glade Green, Resene Killarney, Resene Parsley, Resene Seagull, Resene Spring Green and Resene Spring Rain



Step one

Using the testpot roller, apply a mix of Resene Alabaster and Resene Seagull to the canvas, as shown. Allow to dry.



Step two

Paint a distant range of hills using Resene Spring Rain with a second range beneath using Resene Spring Green.



Step three

Dabbing the paint to create texture, apply a band of Resene Glade Green and a band of Resene Killarney, as shown.



Step four

Apply a final band of Resene Dell, along the bottom of the painting, as shown.



Step five

Using the previous selection of greens, make any adjustments to the painting, as necessary. Allow to dry.



Step six

Paint distant tree shapes, as shown, using Resene Parsley.



Step seven

Paint larger tree shapes, as shown, using Resene Forest Green.

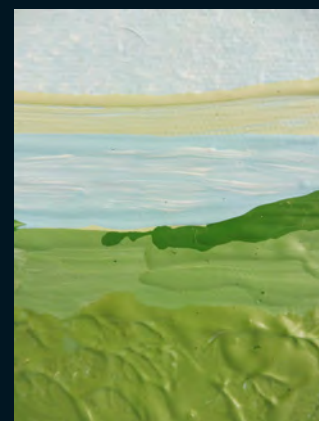


Step eight

Combine Resene Alabaster and Resene Seagull to create a distant lake, as shown. Allow paint to dry thoroughly before hanging.

To get the look:

Mark painted the background wall with Resene SpaceCote Flat tinted to Resene Half Alabaster.



Other ideas:

Create a warm autumnal landscape using testpots of Resene Burgundy, Resene Cinnamon, Resene Desperado, Resene Golden Bell, Resene Havoc, Resene Moccaccino, Resene Rock Spray, Resene Rusty Nail and Resene West Side.

For more ideas and inspiration visit your local Resene ColorShop or www.resene.com/colorshops.

Check out our special Artists' section online www.resene.com/artists.