



★★★ Difficulty level ★ easy ★★ moderate ★★★ challenging

Resene art with Mark Rayner – 54

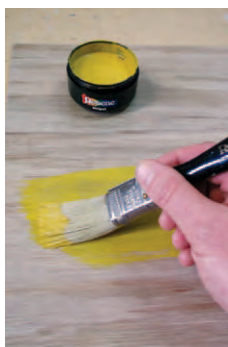
You will need:

- Clean dry cloth
- Latex glove
- Paintbrushes (including an artists' brush)
- Piece of 6mm plywood measuring 380mm x 560mm with edges sanded smooth
- Resene Aquaclear gloss
- Resene Colorwood testpots of Resene Apollo Blue, Resene Desert Yellow, Resene Red Pepper and Resene Satin Orange



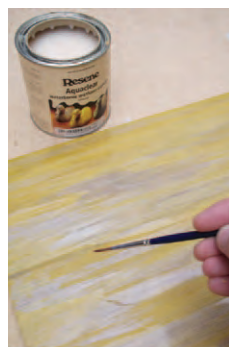
Step one

Using an artists' brush, apply horizontal lines of Resene Aquaclear to the wooden panel, following the direction of the grain. Allow two hours to dry.



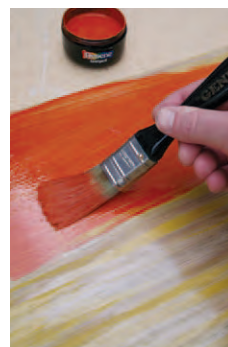
Step two

Apply one coat of Resene Desert Yellow to the wooden panel, brushing in the direction of the grain. Leave for ten minutes and wipe off any residue with a clean cloth – especially in the areas where the Resene Aquaclear has been applied. Allow to dry.



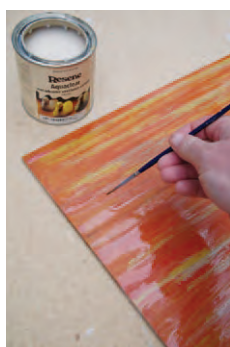
Step three

Repeat step one, applying more horizontal lines of Resene Aquaclear, overlapping some of the stained areas of wood. Allow to dry for two hours.



Step four

Repeat step two applying one coat of Resene Satin Orange. Again, take care to wipe off any residue of Resene Colorwood where the Resene Aquaclear has been applied. Allow to dry.



Step five

Repeat step three, again making sure you overlap some of the stained areas of wood with Resene Aquaclear. Allow to dry for two hours.



Step six

Repeat step four applying one coat of Resene Red Pepper. Once again, take care to wipe off any residue of Resene Colorwood where the Resene Aquaclear has been applied. Allow to dry.



Step seven

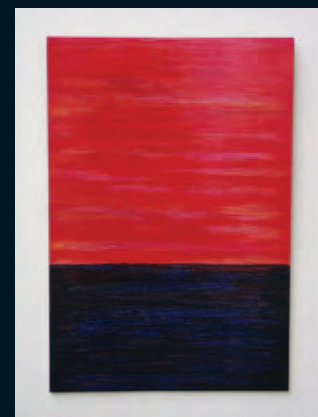
Paint a horizontal band along the bottom of the panel using one coat of Resene Apollo Blue. Allow two hours to dry.



Step eight

Apply three coats of Resene Aquaclear to the entire panel to create a high gloss finish. Allow each coat two hours to dry.

Transform a plain piece of plywood into a stunning colourful landscape with a little bit of help from Resene.



To get the look:

Mark painted the background wall with Resene SpaceCote Flat tinted to Resene Rice Cake.



Other ideas:

Use this same technique to decorate a plain wooden tea tray.

For more ideas and inspiration visit your local Resene ColorShop or www.resene.co.nz or www.resene.com.au.

Check out our special Artists section online www.resene.co.nz/artists/artists_canvas.htm or www.resene.com.au/artists/artists_canvas.htm.