

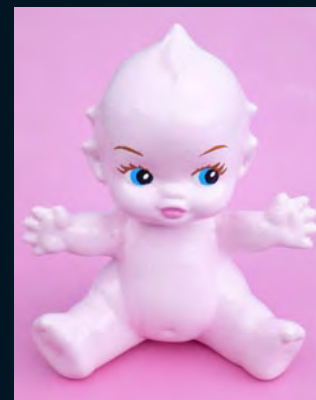
★★★ Difficulty level ★ easy ★★ moderate ★★★ challenging

Toys and Games  
with Mark Rayner – 08

### You will need:

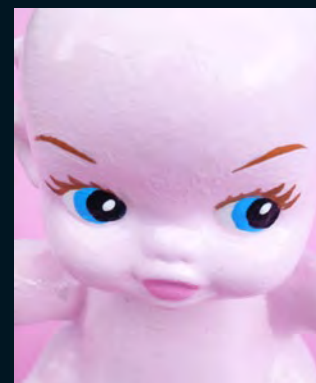
- Bisqued ceramic kewpie doll (ours came from [www.greenware.co.nz](http://www.greenware.co.nz))
- Paintbrushes
- Resene Art Action glaze (gloss)
- Resene Quick Dry
- Resene testpots in Resene Alabaster, Resene All Black, Resene Hopskotch, Resene Princess, Resene Root Beer and Resene Sports Star

Turn a blank ceramic form into a cute kewpie doll ornament with a little bit of help from Resene.



### To get the look:

Mark painted the table with Resene Lustacryl tinted to Resene Hopskotch.



#### Step one

Apply one coat of Resene Quick Dry to the ceramic kewpie doll form and allow two hours to dry.



#### Step two

Apply two coats of Resene Princess to the kewpie doll, allowing two hours for each coat to dry.



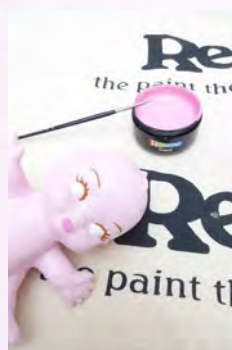
#### Step three

Paint eyelashes and eyebrows with Resene Root Beer and allow to dry.



#### Step four

Paint the whites of each eye with Resene Alabaster, as shown, and allow to dry.



#### Step five

Paint the lips with Resene Hopskotch and allow to dry.



#### Step six

Paint the iris of each eye with Resene Sports Star and allow to dry.



#### Step seven

Paint the pupil of each eye with Resene All Black and allow to dry and then paint a small highlight in each eye with Resene Alabaster. Allow to dry.



#### Step eight

Apply three coats of Resene Art Action glaze to the kewpie doll, allowing two hours for each coat to dry.

### Other ideas:

You can also decorate a glazed ceramic ornament in the same way by lightly sanding and applying a coat of Resene Waterborne Smooth Surface Sealer instead of Resene Quick Dry.

For more ideas and inspiration visit your local Resene ColorShop or [www.resene.co.nz](http://www.resene.co.nz) or [www.resene.com.au](http://www.resene.com.au).

Check out our special Artists section online [www.resene.co.nz/artists/artists\\_canvas.htm](http://www.resene.co.nz/artists/artists_canvas.htm) or [www.resene.com.au/artists/artists\\_canvas.htm](http://www.resene.com.au/artists/artists_canvas.htm).