

Resene colour charts are updated regularly. This colour chart file is part of the colour chart archive, which we provide so you can view Resene colours that have been available over the years. Most older colours can still be tinted – check with your Resene ColorShop team if you need an older colour for your project.

To view the latest Resene colour charts, visit [www.resene.com/colour-charts](http://www.resene.com/colour-charts)

We know choosing just the right colours for your project can be tricky.

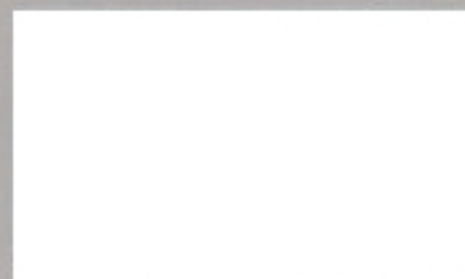
To make it easier we've gathered together many of our favourites in this collection. We've also included popular Resene whites and neutrals so you can create the perfect colour scheme for your place.

If you need help choosing your favourites, our friendly Resene staff are happy to help you with your colour choices.

These colours are loved by many decorators already and we hope they will help you create a look you love.

Happy decorating!

Colour chip isolator



Detach and place over your selected colour to view it on a neutral background without it being affected by surrounding colours.

### Top colour tips

1. Gather together a scrapbook or Pinterest board of colours and looks you like and take this with you when you are visiting stores and making choices - it will help shop staff make recommendations.
2. Always choose the surfaces that have the least choice first - such as your carpet, flooring, benchtop and roof colour - then choose your Resene paint colours.
3. If you think a colour you are looking at on a Resene colour chart may be too dark for your interior, choose a lighter colour. Colours will look more intense when they are painted onto a larger indoor area. When painting outside, the opposite rule applies - if in doubt, choose a darker Resene colour as the sun will make the colour seem lighter.
4. Colour can have a huge impact on how a room feels. Warm up a cool room by painting it in warm colours such as creams and reds. Or cool down a hot room by painting it in soothing blues and greens.
5. If you're opting for a neutral colour scheme, choose a colour family and then vary the strength from full to double, and quarter to half strength. This will help to add extra interest to the colour scheme. The Resene whites and neutrals collection has up to six strengths of each colour and is an easy way to get started on a neutral colour scheme.
6. Ceilings get less light than walls so the same colour on a ceiling will look darker than on a wall. Choose a half or quarter strength of your Resene wall colour if you want your ceiling to look the same strength or lighter than your wall.
7. Lighting will affect your paint colours so it's important to plan your lighting at the same time. Paint a piece of A2 card with two coats from a Resene testpot and move it around the room to see how the colour changes during the day and at night as the light changes.
8. Think about the sheen level. Glossy finishes will make colours look brighter and cleaner. Flat and textured finishes will make colours seem muddier and deeper. Popular sheen level options for interiors are low sheen for walls, such as

### Key:

D = Deep G = Green L = Light  
M = Mid MG = Magenta MI = Mid grey  
O = Ochre P = Pastel RO = Red oxide  
RR = Rich red U = Ultra deep W = White

cc = Also available as a Resene CoolColour™. A change in tone or product may be required for some colours to achieve a Resene CoolColour effect. CoolColour and standard variants of a specific colour use different pigment combinations by necessity to achieve a match to the same Resene master colour standard. This can cause slight colour differences depending on the degree and type of light, which naturally varies with the time of day.

uc = An undercoat is recommended for the optimum finish.

**Note 1:** The approximate light reflectance value (LRV) of a colour indicates the amount of visible light that a colour will reflect. Black has a light reflectance value of 0% and absorbs all light. The surfaces are consequently very dark and can get very hot. In contrast, white has a light reflectance value of 100% and keeps a building light and cool. All colours fit within these two extremes. A Resene CoolColour™ is formulated to reflect more of the sun's energy, improving the colour's heat and total solar reflectance (TSR) properties compared to a normal colour, keeping the coating, substrate and building cooler.

**Note 2:** Mid to dark colours are not suitable for some exterior substrates and if used may cause damage to the substrate, such as warping, checking and premature failure. Always check with the substrate supplier prior to commencing any work to ensure colour selections fit within their guidelines. Resene also manufactures Resene CoolColour technology and this may increase the colour range that can be suitable over some heat sensitive substrates - refer Resene for further information.

**Note 3:** Tones listed are subject to change if colours are reformulated.

**Note 4:** Colours with ( ) around them are alternative names for this colour.

**Note 5:** Colours may be available in selected products or sizes only. Check with Resene ColorShop or Reseller staff to ensure your selected colour is available in the product and/or size you require.

**Note 6:** Colours marked with \* have been matched to the equivalent COLORBOND® or COLORSTEEL® colour samples in 2009. If an exact match is required we recommend you check your chosen colour against the actual sample of the product prior to purchasing. COLORBOND® is a registered trademark of Bluescope Steel Limited. COLORSTEEL® is a registered trademark of New Zealand Steel Limited.

**Note 7:** This colour chart is finished with Resene SpaceCote Low Sheen waterborne enamel, a product ideally suited to kitchens, bathrooms and broadwall areas.

Colour	Colour code	Tone	Approx			Colour	Colour code	Tone	Approx		
			LRV%	RGB	LRV%				RGB		
Alabaster (Cotton White, Light Sea Fog)	N96-006-099	W	91	245 244 241	Merino (Ivory White)	Y91-009-076	W	78	232 228 222		
Arrowtown	cc Y61-022-084	L	29	159 148 133	Midnight Moss	cc G31-010-167	G	6	66 75 71		
Aspiring	cc G80-023-101	W	56	201 199 182	Neutral Bay	cc B66-014-259	W	35	150 159 169		
Atomic	cc B42-016-232	L	13	85 102 109	New Denim Blue* (CS New Denim Blue)	cc B39-012-250	L	11	87 95 102		
Black White	N93-005-100	W	84	235 233 229	Ottoman	G89-013-129	W	73	219 223 214		
Breathless	cc B84-011-257	W	65	203 212 220	Paddock* (CS Pale Eucalypt, CS Mac Grass)	cc G56-028-117	M/MI	24	133 138 120		
Breeze	cc G85-010-197	W	66	201 213 213	Palm Green	cc G34-023-164	G	8	64 82 76		
Bright Red (Cherry, Vivid Red)	R44-148-034	RR	14	191 63 52	Parchment	cc Y86-022-086	W	67	219 209 194		
Bud	G75-020-108	P	46	183 183 166	Pavlova	cc Y77-038-083	P	51	204 186 160		
Canterbury Clay	cc B78-045-078	P	53	214 190 159	Pearl Lusta	Y94-018-087	W	86	242 234 220		
Chicago	cc N49-005-116	L	16	110 111 107	Permanent Green* (CS Permanent Green)	cc G37-031-154	G	9	75 98 86		
Coast* (CS Deep Ocean, CS Storm Blue)	cc B35-023-248	D/MI	10	75 89 99	Pioneer Red* (CS Pioneer Red)	cc R39-075-033	RO/U	11	141 75 64		
Dark Knight	cc B31-014-247	D	6	64 76 84	Pohutukawa	uc R36-087-023	MG	9	137 60 63		
Desperado	cc O43-074-043	O	13	145 87 69	Poppy	R43-133-032	RR	13	178 57 53		
Duck Egg Blue	N81-007-166	W	58	196 203 200	Putty	cc Y78-066-079	L	53	220 187 142		
Dune	cc N44-006-089	M	14	105 103 100	Quarter Duck Egg Blue	N88-004-146	W	72	219 221 220		
Dusted Blue	cc B72-011-221	W	43	165 176 179	Rainee	cc G81-014-144	W	58	192 201 191		
Dusted Grey	cc N80-008-098	W	47	185 183 177	Regent Grey	cc B62-011-233	W	30	139 148 154		
Eagle	G75-021-093	P	49	190 184 168	Rhino	cc B41-020-259	L	12	88 99 111		
Flax	cc G61-033-104	L	29	152 150 126	Rice Cake	G94-010-092	W	85	239 235 227		
Forest Green	cc G37-022-140	G	9	80 91 78	Rivergum* (CS Wilderness, CS Rivergum)	cc G47-022-138	D/MI	19	114 123 109		
Grey Nickel	cc G80-011-093	W	56	200 196 187	Samba	cc B832-018-058	G	7	88 74 66		
Gull Grey (Quarter Regent Grey)	cc N75-008-229	W	48	178 186 189	Scarpa Flow	cc N55-002-289	P	22	129 129 132		
Half Duck Egg Blue	N85-005-175	W	66	207 213 211	Scoria* (CS Scoria)	cc R36-049-033	RO/U	9	117 76 70		
Half Fossil	cc Y87-016-081	W	69	225 215 203	Sea Fog (Ivory, Mist Of Grey)	N92-005-100	W	81	233 231 227		
Half Inside Back	cc G73-008-174	W	44	171 179 177	Seaweed	cc G38-025-121	O	10	81 89 75		
Half Secrets	cc G88-011-105	W	71	220 220 212	Secrets	cc G84-013-114	W	65	211 211 201		
Half Spanish White	Y91-020-082	W	78	236 227 213	Shark	cc N34-007-264	M	8	78 82 86		
Half Tea (Acropolis)	cc Y85-015-083	W	65	217 210 199	Shuttle Grey	cc B52-008-257	P	20	117 122 127		
Half Truffle	cc Y84-009-084	W	64	214 208 201	Silver Sand	cc N80-006-102	W	57	202 201 196		
Hammerhead	cc B48-023-268	L	17	102 113 128	Snow Drift	cc N92-003-122	W	78	228 229 227		
Haven	cc G74-014-143	W	47	177 185 177	Solitude	B94-011-264	W	83	228 236 245		
High Tide* (CS Inevitable, CS Indigo Blue)	cc B36-011-261	M/MI	11	87 92 98	Soothe	cc B881-014-041	W	58	215 197 194		
Indian Ink	cc B26-017-270	U	5	58 65 76	Spanish Green	cc G64-021-136	L	33	149 159 145		
Inside Back	cc G66-009-165	P	36	154 162 159	Thorndon Cream (Bubble White)	Y87-016-090	W	71	223 217 206		
Jaguar	cc B27-008-276	U	5	64 66 72	Toorak	cc B829-018-044	U	6	83 67 62		
Jumbo	cc N64-001-095	W	32	154 153 153	White Painter	cc N89-007-087	W	72	225 221 215		
Karaka* (CS Karaka)	cc G31-010-106	G	7	76 76 70	Wood Bark	cc B830-013-056	O	6	80 72 67		

Remember you only get authentic Resene colours when you use Resene tinters in Resene paint bases. Resene decorative tinters with no added VOCs and the true Resene colour formulations are unique and only available from Resene. So make sure you insist on genuine Resene products and tinters for your project.

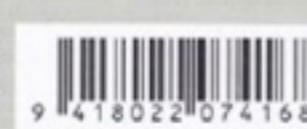
**Resene**

the paint the professionals use

1800 738 383  
resene.com.au

0800 737 363  
resene.co.nz

© Copyright Resene Paints Ltd, June 2018. Accurate reproduction of the colours shown in this colour range is only available using genuine Resene premium products, tinters and formulations. These are not available from other manufacturers or retailers. Unauthorised use of Resene colours and colour names breaches Resene's copyright and trademark rights. Colours may appear to vary with different gloss levels, lighting, substrate texture and application method and technique. Always try a Resene testpot or view a large physical colour sample before making your final choice. Please recycle.



012471 - 8924

# the Classics collection

a curated collection of favourite colours

**Resene**

the paint the professionals use



Shark™cc N34-007-264 Dark Knight™cc B31-014-247 Jaguar™cc B27-008-276 Midnight Moss™cc G31-010-167



Dune™cc N44-006-089 Coast™cc B35-023-248 (CB Deep Ocean, CS Storm Blue) Indian Ink™cc B26-017-270 Atomic™cc B42-016-232



Chicago™cc N49-005-116 High Tide™cc B36-011-261 (CB Ironstone, CS Indigo Blue) Rhino™cc B41-020-259 Inside Back™cc G66-009-165



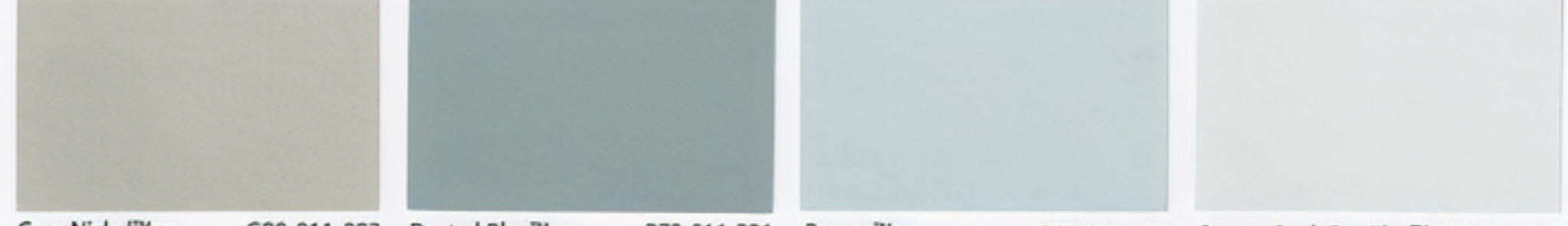
Scarpa Flow™cc N55-002-289 New Denim Blue™cc B39-012-250 (CS New Denim Blue) Hammerhead™cc B48-023-268 Half Inside Back™cc G73-008-174



Jumbo™cc N64-001-095 Shuttle Grey™cc B52-008-257 Neutral Bay™cc B66-014-259 Duck Egg Blue™cc N81-007-166



Dusted Grey™cc N80-008-098 Regent Grey™cc B62-011-233 Breathless™cc B84-011-257 Half Duck Egg Blue™cc N85-005-175



Grey Nickel™cc G80-011-093 Dusted Blue™cc B72-011-221 Breeze™cc G85-010-197 Quarter Duck Egg Blue™ N88-004-146



Silver Sand™cc N80-006-102 Gull Grey™cc N75-008-229 (Quarter Regent Grey) Solitude™ B94-011-264 Snow Drift™cc N92-003-122



Palm Green™cc G34-023-164 Karaka™cc G31-010-106 (CS Karaka) Wood Bark™cc BR30-013-056 Toorak™cc BR29-018-044



Permanent Green™cc G37-031-154 (CS Permanent Green) Forest Green™cc G37-022-140 Sambuca™cc BR32-018-058 Scoria™cc R36-049-033 (CS Scoria)



Rivergum™cc G47-022-138 (CB Wilderness, CS Rivergum) Seaweed™cc G38-025-121 Arrowtown™cc Y61-022-084 Pioneer Red™ R39-075-033 (CS Pioneer Red)



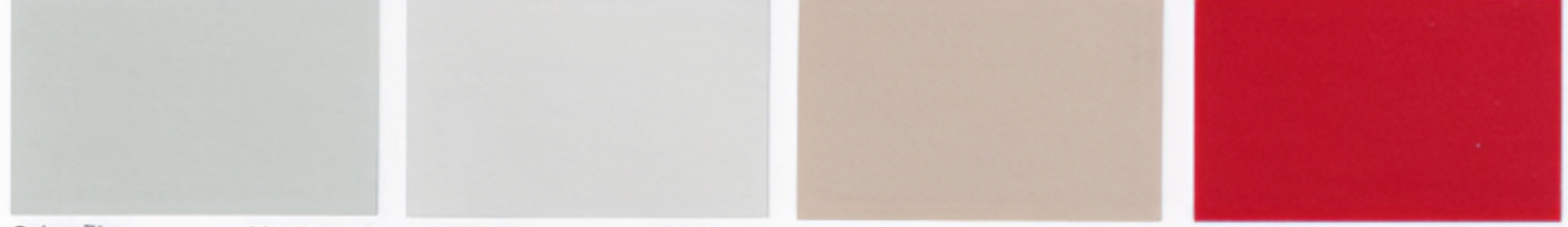
Paddock™cc G56-028-117 (CB Pale Eucalypt, CS Mist Green) Flax™cc G61-033-104 Eagle™ G75-021-093 Desperado™cc O43-074-043



Spanish Green™cc G64-021-136 Bud™ G75-020-108 Putty™cc Y78-066-079 Pohutukawa™uc R36-087-023



Haven™cc G74-014-143 Aspiring™cc G80-023-101 Canterbury Clay™cc BR78-045-078 Poppy™ R43-133-032



Rainee™cc G81-014-144 Secrets™cc G84-013-114 Pavlova™cc Y77-038-083 Bright Red™ R44-148-034 (Chaos, Vermillion)



Ottoman™ G89-013-129 Half Secrets™cc G88-011-105 Parchment™cc Y86-022-086 Soothe™cc BR81-014-041



Thorndon Cream™ Y87-016-090 (Bubble White) Half Truffle™cc Y84-009-084



Half Fossil™cc Y87-016-081 Half Tea™cc Y85-015-083 (Acraolis)



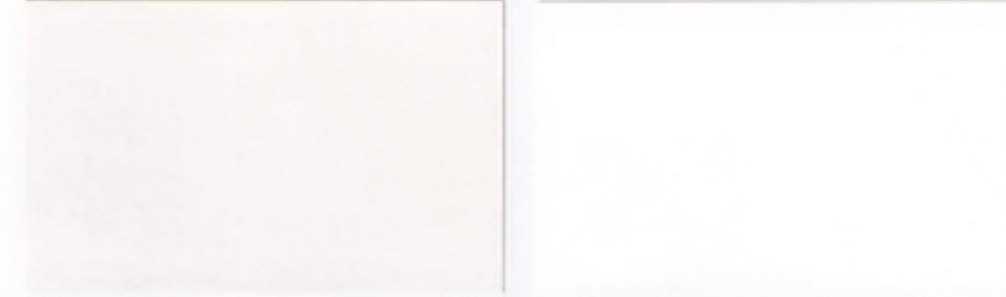
Merino™ Y91-009-076 (Zinc White) White Pointer™cc N89-007-087



Half Spanish White™ Y91-020-082 Sea Fog™ N92-005-100 (Ceramic, Hint Of Grey)



Pearl Lusta™ Y94-018-087 Black White™ N93-005-100



Rice Cake™ G94-010-092 Alabaster™ N96-006-099 (Cotton Wool, Eighth Sea Fog)

