

Resene colour charts are updated regularly. This colour chart file is part of the colour chart archive, which we provide so you can view Resene colours that have been available over the years. Most older colours can still be tinted – check with your Resene ColorShop team if you need an older colour for your project.

To view the latest Resene colour charts, visit www.resene.com/colour-charts

Resene

Metallics

an innovation in colour
movement and energy

exterior/interior



Resene
Total Colour
System

Resene
the paint the professionals use

Resene

Metallics

an innovation in colour movement and energy

exterior/interior

TONE KEY:
 MA & MG = Aluminium MB = Blast Grey
 Tones are subject to change if colours are reformulated.



Blast Grey 1 11 MB 10



Blazer 12 MB 10



Lucifer 13 MB 10



Sputnik 14 MB 10



Mica 15 MB 10



Wizard 16 MB 10



Klingon 17 MB 10



Mystify 18 MB 10



Solar 19 MB 10



Blast Grey 2 11 MB 20



Starship 12 MB 20



Digital Blue 13 MB 20



Titan Blue 14 MB 20



Odyssey 15 MB 20



Spock 16 MB 20



Modular Green 17 MB 20



Optic 18 MB 20



Night Cat 19 MB 20



Blast Grey 3 11 MB 30



Rocket 12 MB 30



Night Sky 13 MB 30



Dalek 14 MB 30



Phaser 15 MA 30



Zing 16 MB 30



Enterprise 17 MB 30



Polarize 18 MB 30



Blast Yellow 19 MB 30



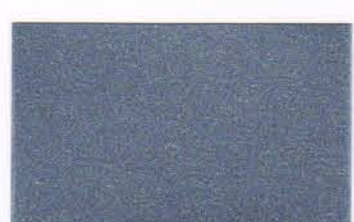
Aluminium 11 MA 40



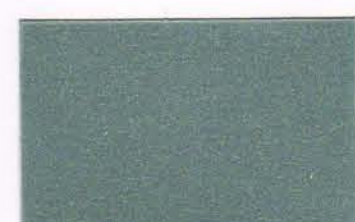
Mach Two 12 MA 40



Obsession 13 MB 40



Scotty Silver 14 MA 40



Tube Blue 15 MA 40



Atlantis 16 MA 40



Phantom 17 MB 40



The Byte 18 MB 40



Gold Dust * 19 MG 40



Silver Aluminium 11 MA 50



Quadrant 12 MA 50



Nitro 13 MA 50



Stargate 14 MA 50



Chopper 15 MA 50



Proton 16 MA 50



Stun 17 MA 50



Sector 18 MA 50



Gold * 19 MG 50

* Available only upon request

Resene Metallics

an innovation in colour movement and energy

Explore a range of shimmering colours with Resene's innovative collection of metallic finishes – **Resene Metallics**.

Resene have pushed the boundaries of colour, design and technology with its metallic range of 45 spectacular colours in alloys, golds, industrial greys and lustrous, powerful colours.

With systems developed for virtually any use, Resene Metallics will transform and add an extra dimension to a wide range of areas from exterior concrete and steelwork through to interior feature walls, doors, joinery and furniture.

Like a chameleon that changes colour according to its surroundings, light striking a surface coated with Resene Metallics creates the unexpected illusion of colour movement. A building coated with Resene Metallics shimmers in response to the sun's position and intensity.



Above: Colour on wall; Polarize.

Far left: Colour on building exterior; Gold Dust.

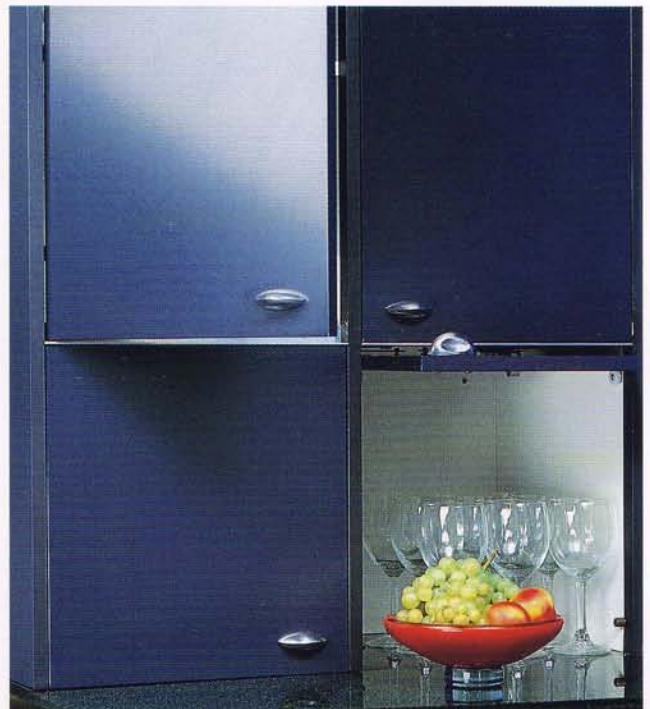
Left: Colour on steelwork; Rocket.

Best System

Imperite IF 503, a spray applied high performance coating, is more durable than Enamacryl Metallic in exterior situations and is preferred especially over new steelwork.

Enamacryl Metallic, a waterborne alternative to Imperite IF 503, is recommended over exterior concrete and plaster. However, it should not be applied over fresh concrete. Alkalinity from concrete can attack the aluminium flake and thus destroy the integrity and appearance of the coating. Enamacryl Metallic is also the preferred product for interior work because of its Environmental Choice approval and low VOC.

Resene Metallics are different in chemistry to standard acrylics and epoxies and need to be handled with precision and care. Slight variations in colour can occur between Resene Enamacryl and Imperite IF 503 due to their inherently different film forming properties.



Colour on cupboards; Sputnik.

Selecting the Right System

Substrate	Resene Spec. No	Surface Prep	Primer/ Undercoat	Basecoat	First Coat	Second Coat	Optional Glaze (gloss)
Exterior Cementitious Plaster	25e 1.3/5	D83	Quick Dry D45	Lumbersider D34	Enamacryl Metallic D309a	Enamacryl Metallic D309a	Multishield+ D54a
Exterior Concrete Floor	25e 2.3/5	D83	Armourcote 510 RA40	Imperite IF 503 RA81	Uracryl 400 Series Clear		
Gib Board (Anaglypta, Scandatex, etc)	25i 1.3/5	D84, D85	Broadwall D403	Lumbersider D34	Enamacryl Metallic D309a	Enamacryl Metallic D309a	Aquaclear D59
Gib Board	25i 1.3/51	D84, D85	Broadwall D403	Lumbersider D34	Enamacryl Metallic D309a	Enamacryl Metallic D309a	Aquaclear D59
Interior MDF Joinery/Doors	25i 1.3/52	D82	Quick Dry D45	Lumbersider D34	Enamacryl Metallic D309a	Enamacryl Metallic D309a	Aquaclear D59
Interior Concrete Floor	25i 2.3/5	D83	Armourcote 510 RA40	Imperite IF 503 RA81	Uracryl 400 Series Clear		
Interior MDF Joinery/Doors	25i 2.3/51	D82	Ultrafill 645	Imperite IF 503 RA81	Imperite IF 502 Clear D82		

NOTES

- Systems will vary depending on the condition of the substrate. For example, if the substrate is porous, substitute Resene Sureseal for Quick Dry and topcoat in your chosen Enamacryl Metallic.
- Durability and washability of Enamacryl Metallic is enhanced with a final coat of Resene Aquaclear Gloss (interior) or Multishield+ Gloss (exterior). Allow at least 24 hours drying if overcoating with Resene Aquaclear.
- Resene Metallics can be applied over existing substrates by changing the priming requirements.
- D83 = Product Data Sheet. Obtain copies from www.resene.co.nz or your local Resene ColorShop.
- Resene Imperite IF 503 must be sprayed, however the Resene Uracryl 400 series can be brushed or rolled (Uracryl cannot be sprayed unless appropriate precautions are observed).
- As a result of the nature of the metallic flakes the underlying colour has a bearing on the final appearance. To ensure colour accuracy, a tinted basecoat is required. Resene have formulated a range of Lumbersider tinted colours specifically for the Enamacryl Metallic range.
- Metallic paints are more difficult to apply than standard decorative topcoats. See application details below. If in doubt about any aspect of application, contact Resene Paints.

Surface Preparation

A superb finish demands excellent surface preparation, and a Level 5 finish is recommended when painting Gib to minimise surface imperfections. A Level 5 finish requires skim coating of the entire surface with Resene Broadwall Surface Prep (see Data Sheet D807).

Application

Correct orientation of the metallic flake is critical to achieve the best finish. If the metallic flakes lay at opposing angles, they will reflect light at different angles, affecting the final finish. Care must be taken during application, particularly when cutting in. To minimise any appearance differences, take the roller as close to the edge as possible and when painting interior walls, paint opposite walls first to avoid marking in the corners.

Avoid touch-ups as differences in appearances may be apparent.

Spraying gives the most 'stand out' metallic look by sitting the metallic flakes up on their edges. Resene Metallics sprayed over textured surfaces, such as Resene Sandtex, give the best finish.

If professional applicators are being used to apply Resene Metallics, ensure you agree upon a sample panel before the painting commences.

The use of clear overcoats can improve the cleanability and abrasion resistance of Resene Metallics while adding a subtle dimension to the final finish. They also improve the colour retention of the more sensitive colours.

Sound surface preparation and application are vital to ensure you achieve the best finish. Please refer to Resene Enamacryl Metallic Data Sheet D309a, Resene Imperite IF 503 Data Sheet RA81 or contact your nearest Resene ColorShop for any assistance you may require.

Spraying Application:

Spraying Small Areas:

Spray using an H.V.L.P. in small circular motions to get an even finish. Use a 51 thou tip with a No.10 or 11 Air Cap and thin Resene Enamacryl Metallic with 5% – 10% Resene Hot Weather Thinner to ease the coating through the gun. For the most even finish, lay the product down in multiple thin layers holding the gun about 600mm from the surface. This gives the best metallic effect. The final layer can be sprayed as far as 800mm from the surface.

Spraying Large, Smooth Areas:

Use a Pressure Pot system set up on convention or internal mix gun. Look for an even oval fan (wet film) when setting up. Spray to achieve an even wet film over the total surface. Thin Resene Enamacryl Metallic with 5 – 10% Resene Hot Weather Thinner to ease the coating through the gun.

Spraying Large, Textured Areas:

Use an airless unit or roller to apply an even first coat, then finish with light coats applied by H.V.L.P. The best results are achieved by using the Airlessco Soft Edge tip, size 615. Thin Resene Enamacryl Metallic with 5 – 10% Hot Weather Thinner. Remove all filters from the unit, and build the film in thin layers rather than one heavy coat. If you have to stop for any length of time, open up the pressure release valve and drop the pressure on the line. This will minimise the tendency for product to pack in around the valve.

If you are a contractor unsure about a project where a Resene Metallic finish has been specified, we recommend purchasing and trialling 500ml of Resene Enamacryl Metallic to enable you to determine a fair price for the job. Lighter colours will be more difficult to spray than darker colours.

Roller Application:

If rolling, use a Resene No.1 Roller and ensure you lay-off consistently in the same direction. Cutting in should be limited to the first coat only. Use masking tape to get close to the edges and paint opposite walls first. Use 5% Hot Weather Thinner for a longer open time. This will allow the flakes to settle down better. For very large areas, such as walls, mask the job into smaller sections.

Roller Application - Textured Areas:

Resene Enamacryl Metallic can be roller applied to textured surfaces, however, you need to be careful to avoid runs caused by paint caught in the hollows of the texture. Lay-off in one direction.

Roller Application - Doors:

For a fine finish needed for a door, lay-off with a foam roller and follow with a glaze coat for maximum durability.

Brush Application:

Brushing is suitable for very small areas only. Use a synthetic filament brush and lay-off in one direction. Apply using a crows foot technique to achieve a paint effects finish.



Choose to help the environment

You can minimise the effect your next decorating project has on the environment by choosing from the Resene range of Environmental Choice approved products, including Resene Enamacryl Metallic.

Resene Paints Limited

In New Zealand: 32-50 Vogel Street, Lower Hutt, PO Box 38-242, Wellington Mail Centre

In Australia: PO Box 785, Ashmore City, Queensland 4214

In New Zealand call 0800 RESENE (0800 737 363)

In Australia call 1800 738 383

Visit our website www.resene.com or email us at advice@resene.co.nz



Resene

the paint the professionals use