

Resene colour charts are updated regularly. This colour chart file is part of the colour chart archive, which we provide so you can view Resene colours that have been available over the years. Most older colours can still be tinted – check with your Resene ColorShop team if you need an older colour for your project.

To view the latest Resene colour charts, visit www.resene.com/colour-charts

Preparation

A superb finish demands excellent surface preparation. For interior plasterboard, skim coat the entire surface with **Resene Broadwall Surface Prep & Seal** (see Data Sheet D807) or **Resene Broadwall 3 in 1** (see Data Sheet D810) to achieve a Level 5 finish. Or apply a textured finish, such as **Resene Sandtex** (see Data Sheet D71), to help hide surface imperfections.

For application over fresh exterior concrete, apply **Resene Limelock** (see Data Sheet D809) first to cure and seal the surface to prevent alkalinity from the concrete attacking the aluminium flake and affecting the finish.

Basecoat

Once the surface is prepared, apply the basecoat colour recommended for your **Resene FX Metallic** finish. This will help you to achieve the authentic colour shown on this colour chart.

Protect

Clear overcoats improve the cleanability and abrasion resistance of Resene special effects while adding a subtle dimension to the final finish. They also improve the colour retention of the more sensitive colours. Use **Resene Aquaclear** (see Data Sheet D59) for interiors or **Resene Concrete Clear Gloss** (see Data Sheet D54a) for exteriors.

Personalised

You can experiment with using different Resene paint colours to undercoat your metallic hues, layering multiple **Resene FX Metallic** paint colours over one another or mixing your metallic colours with **Resene FX Paint Effects Medium** to create unique metallic washed effect finishes. Be sure to test your effects first by creating a sample panel before finalising your specification. You can achieve different effects with different application techniques, surfaces, textures, products and lighting. When it comes time to paint, your test panel can be used as a reference.

How to apply Resene metallics and special effects finishes

Correct orientation of the metallic or pearlescent flakes is critical to achieve the best finish. If the flakes lay at opposing angles, they will reflect light at different angles, which can give an uneven finish. Take care during application, especially when cutting in. Avoid touch-ups as these areas may look very different.

Spraying is recommended and gives the most 'stand out' effect by sitting the flakes up on their edges. Apply over textured finishes, such as **Resene Sandtex**, to accentuate the finish.

If professional applicators are being used, ensure you agree upon a sample panel before the painting commences.

Sound surface preparation and application are vital to ensure you achieve the best finish. View the product data sheets online at resene.com/datasheets or contact your nearest Resene ColorShop or reseller for advice.

Applying by brush

Brushing is suitable for very small areas only. Use a synthetic filament brush and lay-off in one direction. Apply using a crows foot (criss cross) technique to achieve a paint effects finish.

Applying by spray

Small areas: Spray using an H.V.L.P. in small circular motions to get an even finish. Use a 51 thou tip with a No. 10 or 11 air cap and thin **Resene FX Metallic** with 5-10% **Resene Hot Weather Additive** to ease the coating through the gun. For the most even finish, lay the product down in multiple thin layers holding the gun about 600mm from the surface. This gives the best metallic effect. The final layer may be sprayed as far as 800mm from the surface.

Large, smooth areas: Use a pressure pot system set up on convention or internal mix gun. Look for an even oval fan (wet film) when setting up. Spray to achieve an even wet film over the total surface. Thin **Resene FX Metallic** with 5-10% **Resene Hot Weather Additive** to ease the coating through the gun.

Large, textured areas: Use an airless unit or roller to apply an even first coat, then finish with light coats applied by H.V.L.P. The best results are achieved by using a soft edge tip, size Graco FFLP 516. Thin **Resene FX Metallic** with 5-10% **Resene Hot Weather Additive**. Remove all filters from the unit and build the film in thin layers rather than one heavy coat. If you have to stop for any length of time, open up the pressure release valve and drop the pressure on the line. This will minimise the tendency for product to pack in around the valve.

If you are a contractor unsure about a project where a Resene special effects finish has been specified, it's best to try a small amount of **Resene FX Metallic**, **Resene ArmourX IF 503** or **Resene FX Pearl Shimmer** to enable you to determine a fair price for the job. Lighter colours will be more difficult to spray than darker colours.

Applying by roller

When rolling always lay-off consistently in the same direction. Only cut-in on the first coat. Use masking tape to get close to the edges and paint opposite walls first. Add 5% **Resene Hot Weather Additive** for a longer open time to allow the flakes to settle down better. For very large areas, such as walls, mask the job into smaller sections.

Textured areas: Resene special effects may be roller applied to textured surfaces. Take care to avoid runs caused by paint caught in the hollows of the texture. Lay-off in one direction.

Doors: For a fine finish needed for a door, lay-off with a foam roller and follow with a clear coat for maximum durability.

Shimmer style

Resene FX Pearl Shimmer is a waterborne pearlescent glaze, ideal for creating shimmering wall finishes and softly sparkled finishes over a tinted basecoat to add visual interest and diversity to any scheme. Use on exterior and interior areas, including trim and joinery.

How to apply Resene FX Pearl Shimmer

Basecoat first - Apply the chosen basecoat tinted to your desired colour, such as **Resene Lumbersider Low Sheen** tinted to **Resene Nero**, and allow to dry.

Then apply **Resene FX Pearl Shimmer**. For spray application, use a high volume low pressure spray with 40' fan and a 51 needle with a No. 10 air cap. Thin up 10% using a blend of **Resene Hot Weather Additive** and water. Spray with a 50% overlap in a very light coat to give an even wet film and allow to dry. Provided a light coat has been applied, the finish will look mildly milky but will dry back to a clear finish with small shimmering flakes. If too much product is applied, the end finish will be milky. If you prefer to apply by brush, apply using a crows foot (criss cross) technique. Thicker ridges will appear milky, which is part of the effect.

Roller application is not recommended as it is difficult to get an even finish.

Apply a further coat or coats of **Resene FX Pearl Shimmer** for extra shimmer if desired.

Need help?

We can help you with everything from which colours and paints to choose to the right prep and accessories. Visit your local Resene ColorShop or reseller or use our free services online - Ask a Resene Colour Expert, resene.com/colourexpert and Ask a Resene Paint Expert, resene.com/paintexpert.



Explore a colour library

View a huge range of Resene colour swatches in the in-store colour library at your local Resene ColorShop or reseller. Browse through thousands of large A4 swatches finished in real Resene paint. You're bound to find one that suits. You can also view swatches online in our colour library, resene.com/colour.



Put your colour to the test

No matter how you select your colours, always use Resene testpots to confirm your choices in the area you are planning to paint. Choose from a wide range of testpots at your local Resene ColorShop or reseller or order from the Resene ColorShop online, shop.resene.com/testpots.



Choose to help the environment

Minimise the effect your decorating projects have on the environment by choosing one of the Resene range of Eco Choice approved products. Our commitment to sustainability led to Resene being named Sustainable Business of the Year at the 2010 National Sustainable Business Awards.



Be PaintWise

For tips on minimising the impact of your decorating on the environment see resene.com/paintwise.

Resene

the paint the professionals use

1800 738 383
resene.com.au

RESENE 737 363
resene.co.nz

© Copyright Resene Paints Ltd, November 2006. Accurate reproduction of the colours shown in this colour range is only available using genuine Resene premium products, tinters and formulations. These are not available from other manufacturers or retailers. Unauthorised use of Resene colours and colour names breaches Resene's copyright and trademark rights. Colours may appear to vary with different gloss levels, lighting, substrate texture and application method and technique. Always try a Resene testpot or view a physical colour sample before making your final choice. Colours of images are as close as the printing process allows. Please recycle.



9 418022 018681

Resene Metallics and special effects



Resene

the paint the professionals use



Wall in Resene FX Metallics Wallpaper Gold Dust and mirror, plate and spoon basecoated in Resene Apache and topcoated in Resene FX Metallic Gold Dust. Table from Republic.

Explore a range of shimmering colours with Resene's innovative special effects collection of metallic and pearlescent finishes.

Surfaces coated with Resene metallics and special effects shimmer in response to light and create the unexpected illusion of colour movement. With systems developed for virtually any use, you can use Resene metallics and special effects to transform and add an extra dimension to a wide range of areas from concrete and steelwork through to interior feature walls, doors, joinery and furniture.

Selecting the right system

Resene FX Metallic is an Eco Choice approved waterborne metallic effect finish, which is low in VOCs. Use it on a wide range of projects inside and out, such as concrete, plaster and plasterboard.

Performance coatings

Resene ArmourX IF 503 is a spray applied, durable high performance coating. Use it on exteriors, especially over new steelwork, and on interior splashbacks.

Resene FX Metallic finishes may also be applied as part of a **Resene AquaLAQ** system for joinery and doors, ideal for areas such as kitchens. Contact Resene for technical advice on the full system to suit your project.

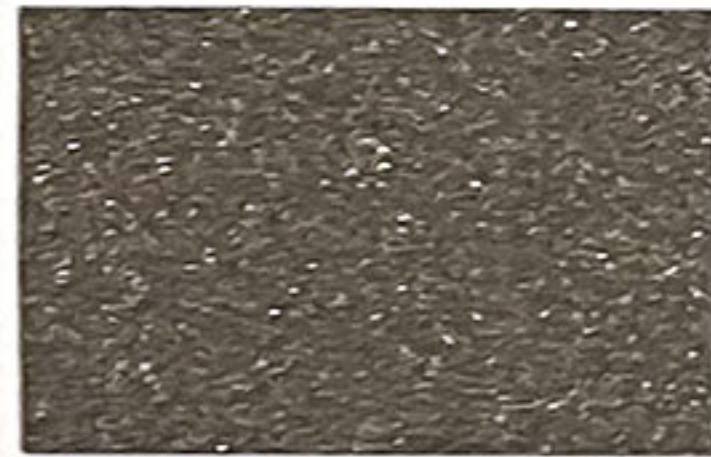
Resene FX Metallic and **Resene ArmourX IF 503** finishes will vary due to their inherently different film forming properties, so it's best to use one finish for your project.

Resene FX Metallics Wallpaper Collection

All metallic colours in this colour range are also available in the **Resene FX Metallics Wallpaper Collection**. With **Resene FX Metallics Wallpapers** the painting is done for you using **Resene FX Metallic** paint so you can get a seamless finish from paint to wallpaper. Paint your décor in **Resene FX Metallic** colours to match your chosen **Resene FX Metallics Wallpaper** for an enviable colour drenched look.



Blast Grey 1™ (Shark) M34-004-071



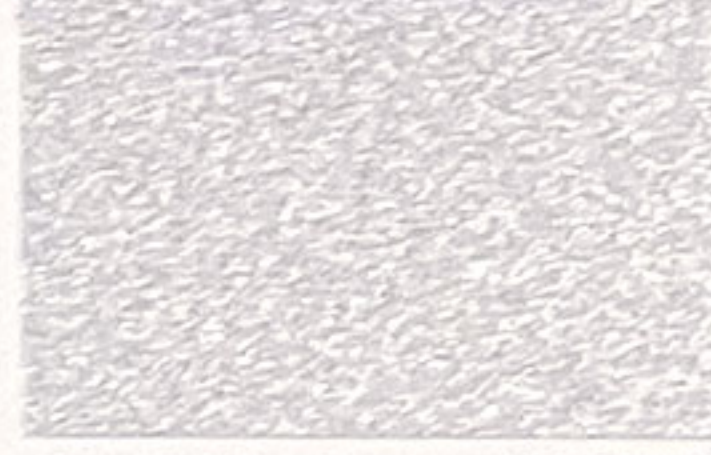
Blast Grey 2™ (Tundra) M44-006-075



Blast Grey 3™ (Star Greystone) M55-002-072



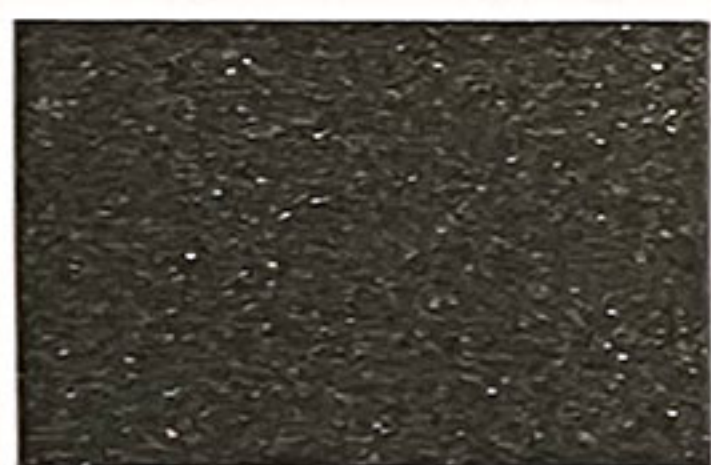
Aluminium™ (Stack) M71-005-087



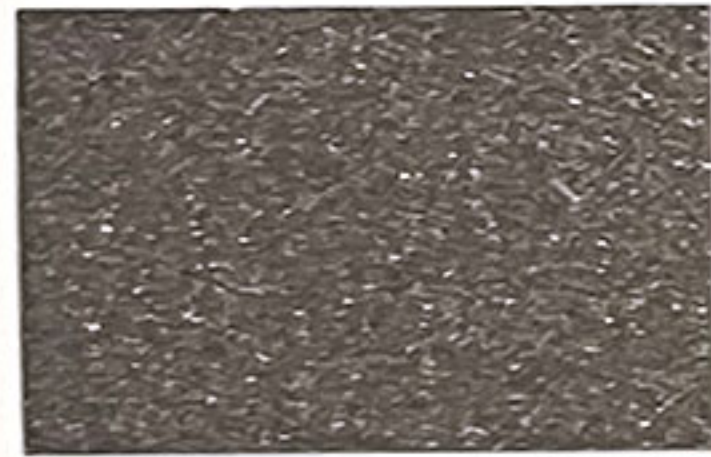
Silver Aluminium™ (Silver Chalice) M83-003-232



Resene Blast Grey 3



Catch 22™ (Zeus) M35-004-106



Basalt™ (Zulu) M43-005-325



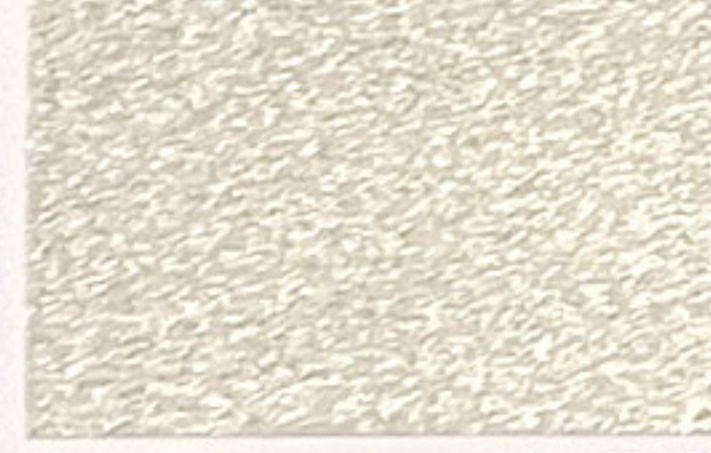
Deep Space™ (Mascala) M51-009-077



Pure Pewter™ (Chicago) M60-015-085



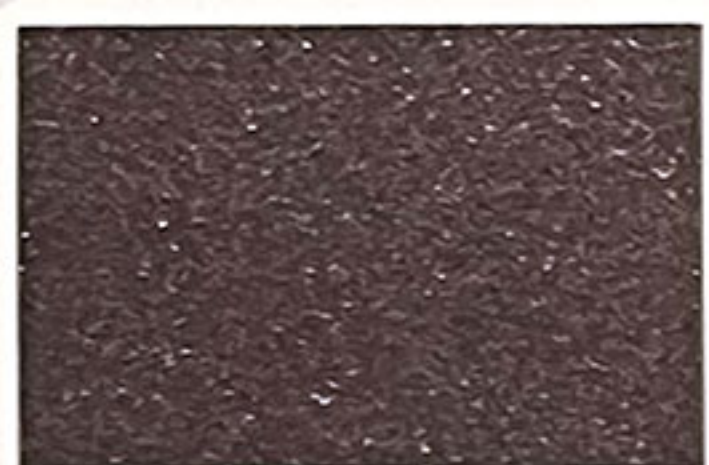
Silver Steel™ (Half Stack) M67-001-338



Proton™ (Copper) M80-013-107



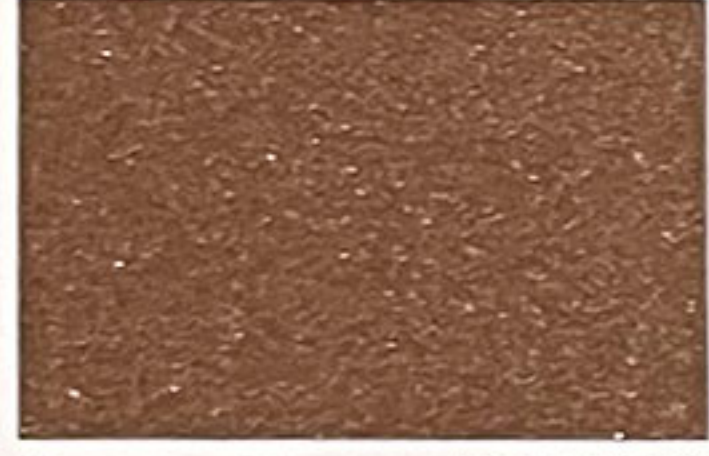
Bedrock™ (Real) M77-016-085



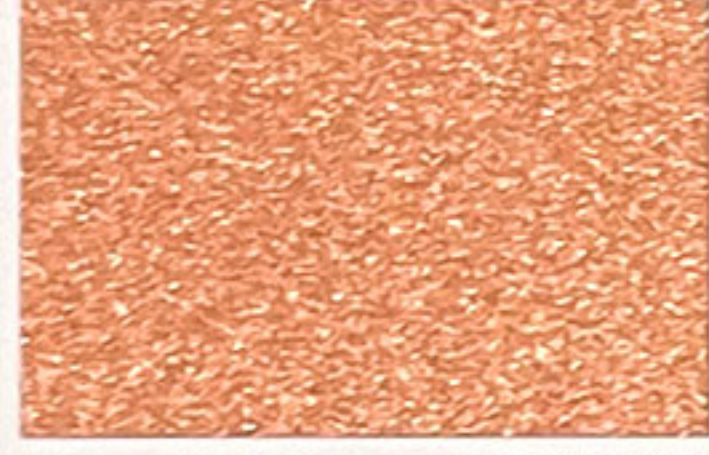
Light Year™ (Caffeine) M34-014-338



Galaxy™ (Cosmic) M50-027-007



Copperhead™ (Harry Heath) M47-038-039



Copper Fire™* (Wild West) M57-064-045



Magma™* (Tuffee) M59-074-060



Bullion™* (Porsche) M67-080-068



Rose Gold™ (Kalbarrie Sands) M67-047-064



Resene Bullion



Spark™ (Domino) M45-033-062



Blast Yellow™ (Cape Palliser) M48-058-063



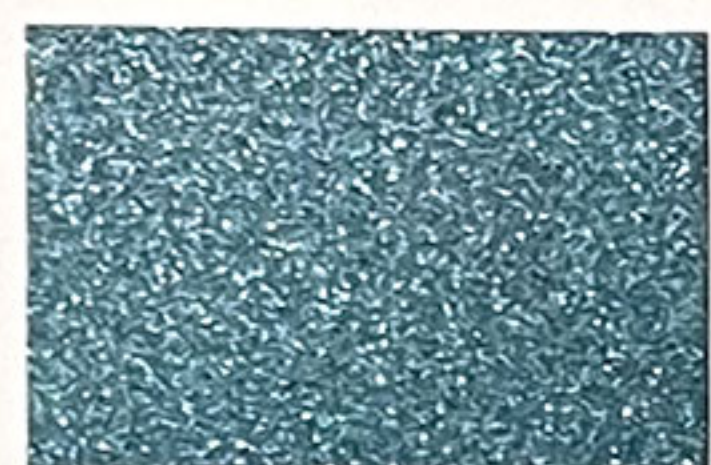
Goldmine™ (Dusty Road) M68-046-067



Gold Dust™* (Apache) M69-066-078



Gold™* (Gimblet) M70-060-089



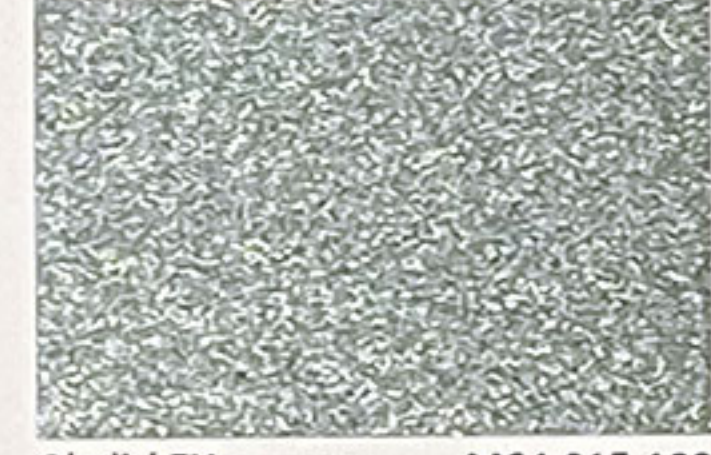
Lucifer™ (Teal Blue) M40-037-226



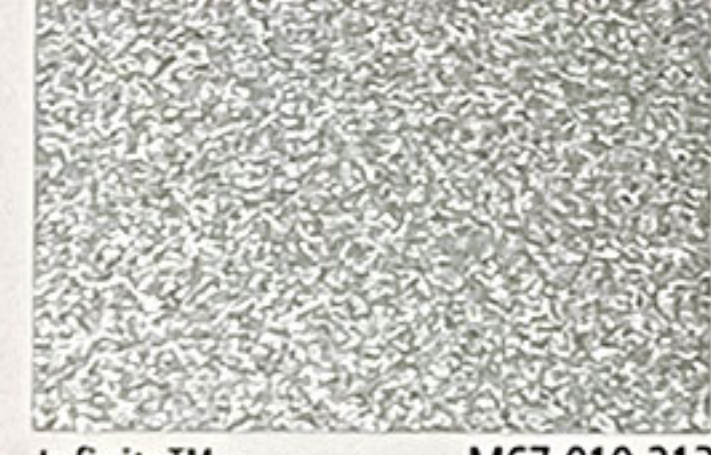
Pioneer™ (Jurassic) M46-015-178



Magnetic™ (Raptor) M46-016-114



Obelisk™ (Blue Smoke) M64-015-199



Infinity™ (Regent Grey) M67-010-213



Allusive™ (Gull Grey) M74-008-201



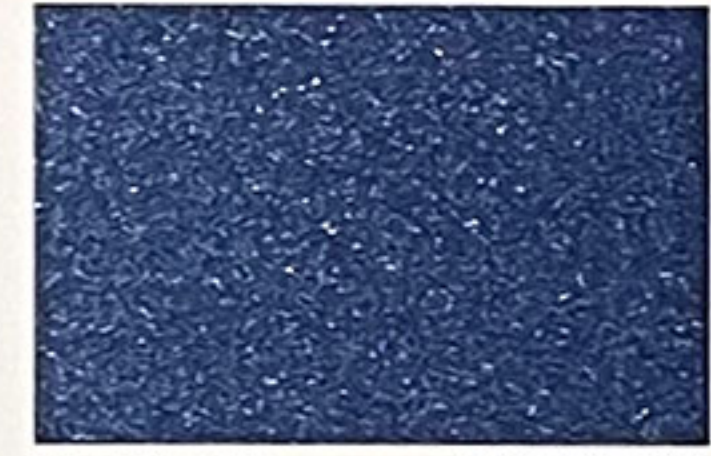
Stun™ (Coriander) M78-034-108



Digital Blue™ (Astronaut) M40-046-279



Sputnik™ (True Blue) M37-031-265



Time Warp™ (Astronaut) M49-055-264



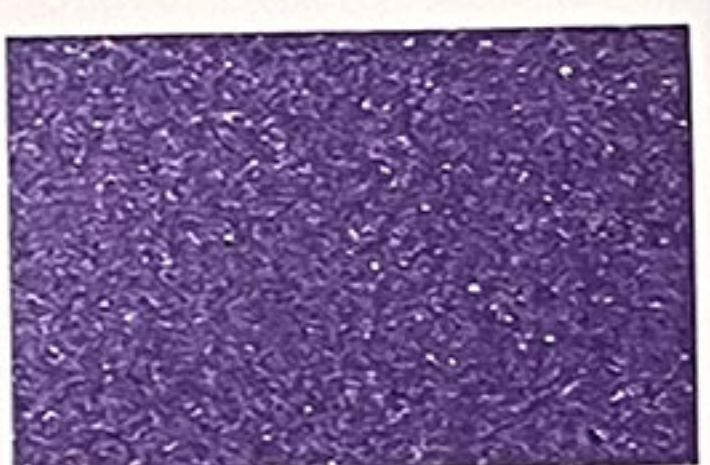
Dalek™ (Kashmir Blue) M46-028-246



Scotty Silver™ (Escapade) M76-026-239



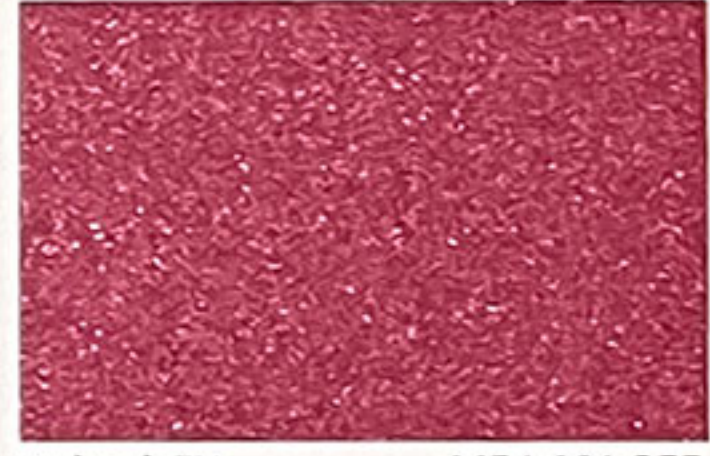
Resene Allusive



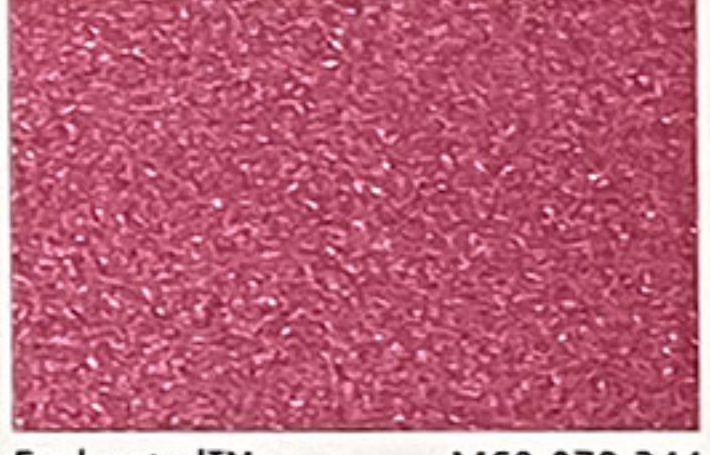
Funtasia™ (Daisy Bush) M48-091-301



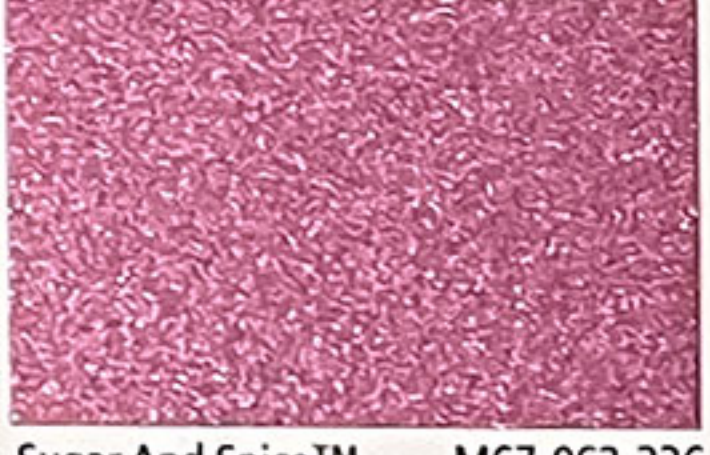
Glitterbug™ (Candy Floss) M50-100-022



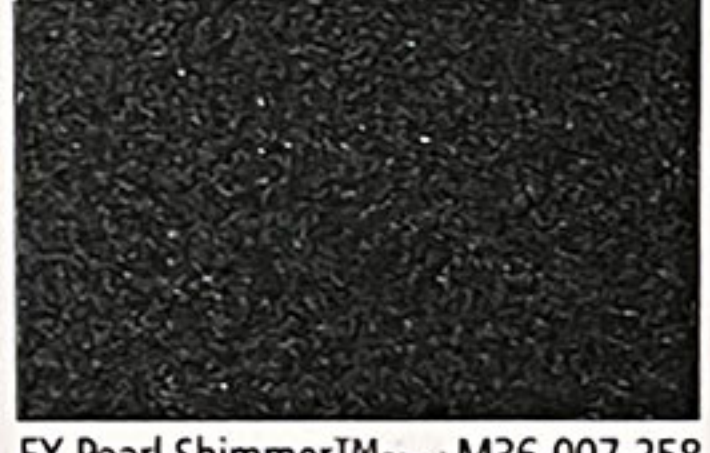
Bedazzle™ (Rouge) M54-081-355



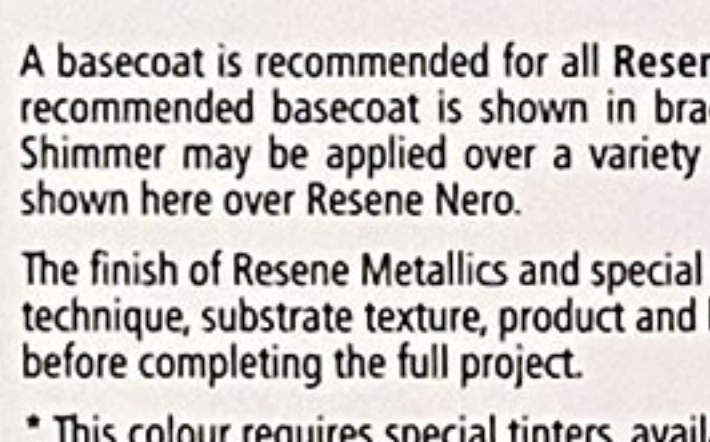
Enchanted™ (Rouge) M60-078-344



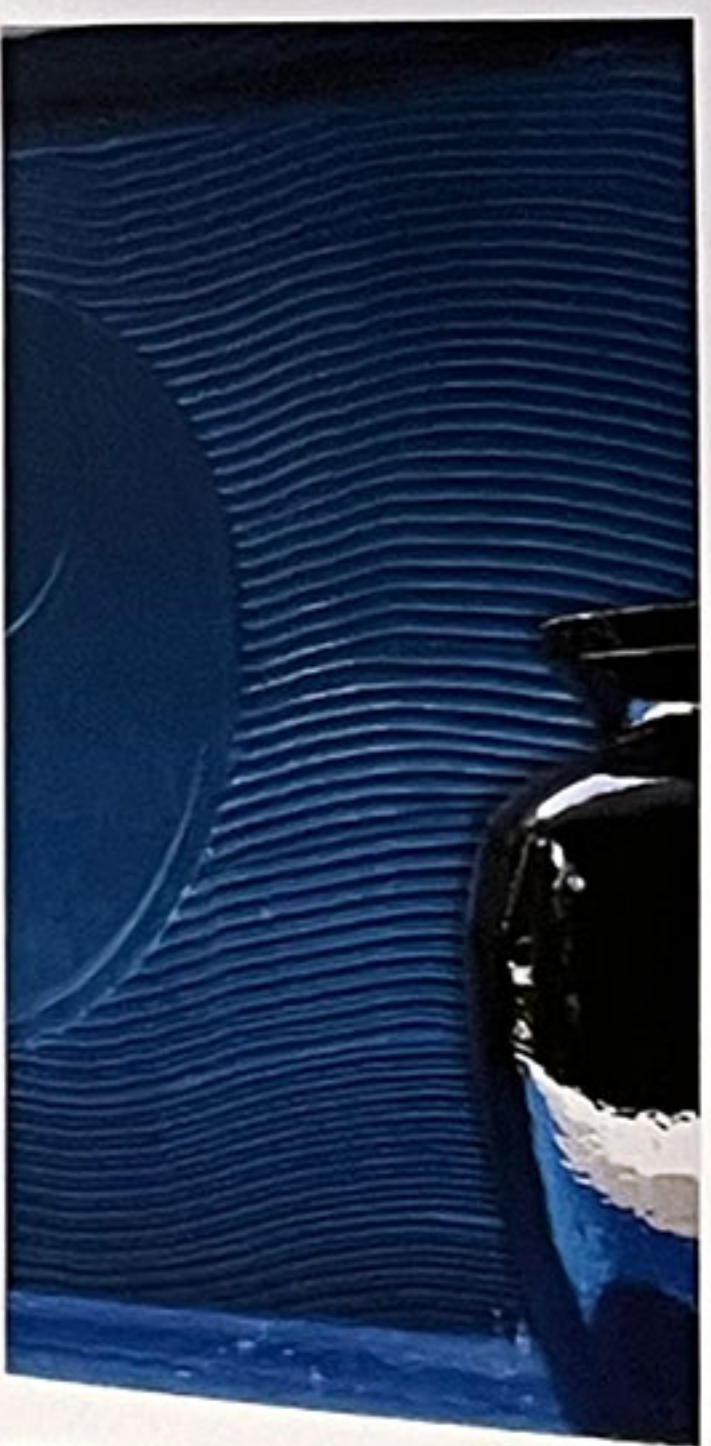
Sugar And Spice™ (Strikemaster) M67-062-336



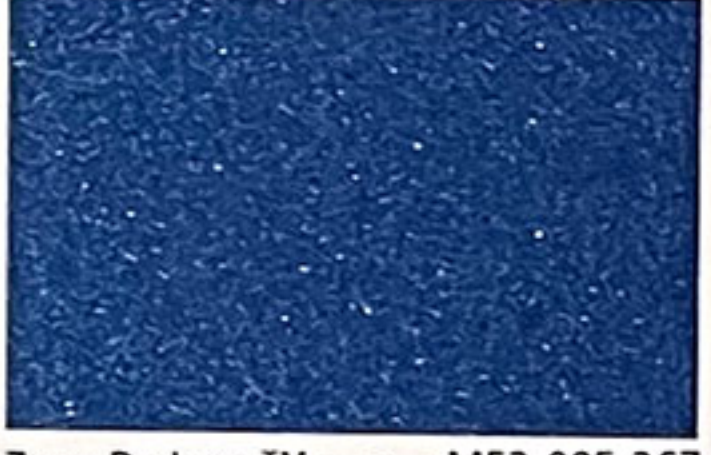
FX Pearl Shimmer™ (Nero) M36-007-258



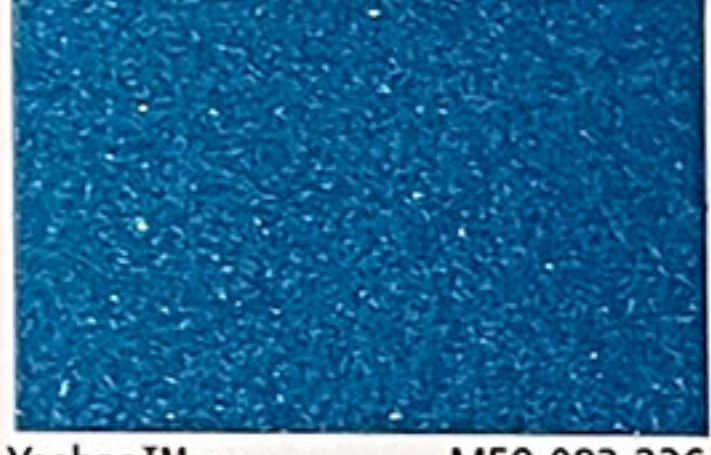
Go Go Go™ (Anise) M73-080-131



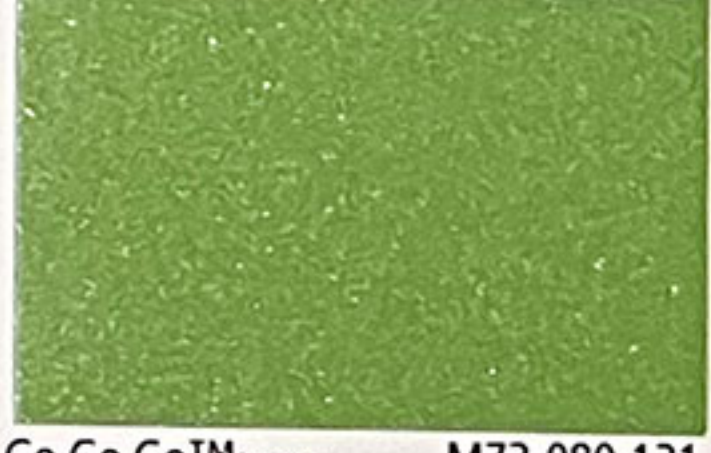
Resene Zoop De Loop



Zoop De Loop™ (Tony Blue) M52-085-267



Yehaa™ (Optimist) M59-082-236



Go Go Go™ (Anise) M73-080-131

A basecoat is recommended for all Resene Metallics and special effects colours. The recommended basecoat is shown in brackets after the colour name. Resene FX Pearl Shimmer may be applied over a variety of basecoat colours for different effects. It is shown here over Resene Nero.

The finish of Resene Metallics and special effects colours varies depending on application technique, substrate texture, product and lighting. Always check and agree a sample area before completing the full project.

* This colour requires special tinters, available on request.

View the Resene Roof Systems colour chart for more metallic finishes.