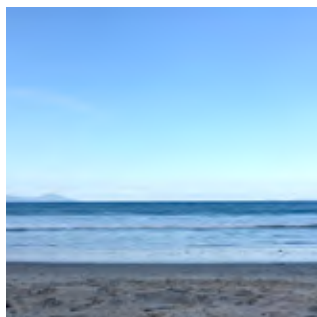


Colourful terrain

From the mountains to the sea, the world around us provides a wealth of colour inspiration. Here our stylists translate their favourite nature-inspired palettes into new looks for living spaces.

Styling **Amber Armitage, Gem Adams, Sophie Peacocke**
Photography **Melanie Jenkins**

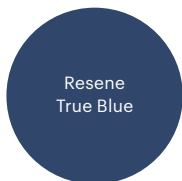




SEA AND SKY

Styling **Amber Armitage**

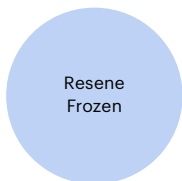
THE INSPIRATION The sea has always been my go-to place for inspiration and relaxation. There is something about looking out to the horizon over the sea that puts everything in perspective, with a bonus calming effect. It is also a great place for colour inspiration. The Sea and Sky palette is a meeting of deep ocean hues such as Resene True Blue, with a lighter sky colour such as Resene Frozen. If you're wanting to paint your walls in two tones, choose a light and dark shade from the same colour family for a harmonious result. Then, adding an injection of something zesty such as Resene Clockwork Orange on the edge of a shelf that goes right around the room will provide an element of surprise – as well as giving you a modern take on the traditional picture rail.



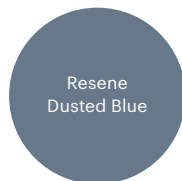
Resene
True Blue



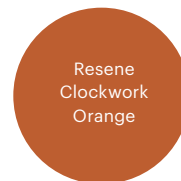
Resene
Skydiver



Resene
Frozen



Resene
Dusted Blue



Resene
Clockwork
Orange

GET THE LOOK Resene True Blue (half wall); Resene Skydiver (wall block); Resene Breathless (main wall); Resene Dusted Blue (pot); Resene Clockwork Orange (stripe), resene.co.nz. **Shelf** (designer's own) painted edge in Resene Clockwork Orange. Wall **brackets** (painted in Resene Breathless), \$12, livingconcepts.co.nz. Norm Steel Stand **clock** by Menu in light grey, \$129, simonjamesdesign.com. Archie **ramekin** in Chalk White, \$18; Mavis **jug** in Fog Grey, \$68, amberarmitage.com. Northern **pouf**, \$269; Philly **sofa**, \$4280, boconcept.com. Merino wool hand-knitted natural grey **throw**, \$295, chaingangstore.co.nz. Perfect Day linen **cushion** by Jessica Zoob, \$425, tessuti.co.nz. Kasket white high **table**, \$299, cittadesign.com. Pot painted in Resene Dusted Blue. Extra-large oval-mouth blown-glass **vase**, \$374, cittadesign.com. **Plant**, stylist's own. Painted **board** in a blend of Resene Cut Glass and Resene Regatta.







EARTH AND STONE

Styling **Gem Adams**

THE INSPIRATION I have always found nature to be a brilliant source of inspiration, and on my latest adventure to Tongariro National Park I was struck by the intense hues of the aptly named rusty rocks. The dried-out volcanic rock tone of Resene Baroque featured as my wall base here, with Resene Ayers Rock – a tone reminiscent of the rich sediment – as one of my feature colours, along with the lichen tones of Resene Pendragon. Resene Half Trojan grounded the room in a dark rocky grey. I picked up hints of Resene Quarter Napa in the floor rug that echoes the tones of the soft russets – and the deep Resene Desperado matched the dried flower arrangement.



Resene
Baroque

Resene
Half Trojan

Resene
Desperado

Resene
Ayers Rock

Resene
Pendragon

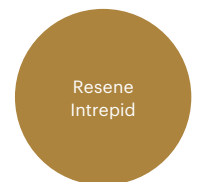
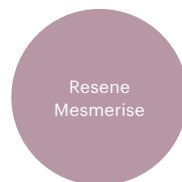
THE LOOK Resene Baroque (wall); Resene Ayers Rock (wall block); Resene Pendragon (wall stripe); Resene Half Trojan (floor), resene.co.nz. Markantoina **dried arrangement** and **vase**, \$POA, markantoina.com. Tom Dixon Bash **vessel** (small), \$425, simonjamesdesign.com. Best **console table**, \$1949, boconcept.com. Max-Beam **stool** by Ludovica + Roberto Palomba for Kartell, \$495, backhousesnz.com. Temuka **bowl**, stylist's own. Indian kilim **rug**, \$845, indiehomecollective.com. Harp **chair**, \$2650, karakter.co.nz. Icelandic **sheepskin**, \$498, cultdesign.co.nz. Mustard cotton velvet **cushion cover**, \$44.90, cittadesign.com. Douglas and Bec Line floor **lamp**, \$1325, douglasandbec.com.



FIELD AND FOREST

Styling **Sophie Peacocke**

THE INSPIRATION Green is a colour I've always been drawn to, so this photo taken on holiday in Wanaka was a great starting point in creating my paint palette. I picked Resene Seaweed for the floor colour to match the dark hues in the shadows of the trees. Resene Coriander was my choice for the wall colour to match the dry wild grass. I picked out little pops of mustard in the various plants and sunlight glades, which were represented with Resene Intrepid. Lilac Resene Mesmerise was matched from the wild flowers – hints of colour amongst the greenery. Resene Scaramanga didn't make it onto the wall but was a main colour pulled from the photo which could easily be used instead of the floor colour or for accents around the room.



GET THE LOOK Resene Coriander (wall); Resene Mesmerise (stripe); Resene Seaweed (floor); Resene Intrepid (pegboard), resene.co.nz. Timothy John Bowler pendant **light**, \$229 each, paperplanestore.com. Hex **ottoman**, \$690 (plus 1m fabric), simonjamesdesign.com. *The Gardener's Garden* **book** published by Phaidon (orange cover), \$100; *Strange Plants II* **book**, published by Zioxla (purple), \$50; Japanese ceramic **pot**, \$115; French willow **basket** (large), \$325, garden-objects.com. Lapco **cow hide**, from \$478, lapco.co.nz. Muskhane **pouf** in stone, from \$199, goodasgold.co.nz. Muuto Connect two-seater **sofa**, \$6,995, bauhaus.co.nz. Elvang classic **throw** in olive, \$260, designdenmark.co.nz. **Pegboard**, \$61.15, carters.co.nz. Dried **flowers** supplied by markantonia.com.

