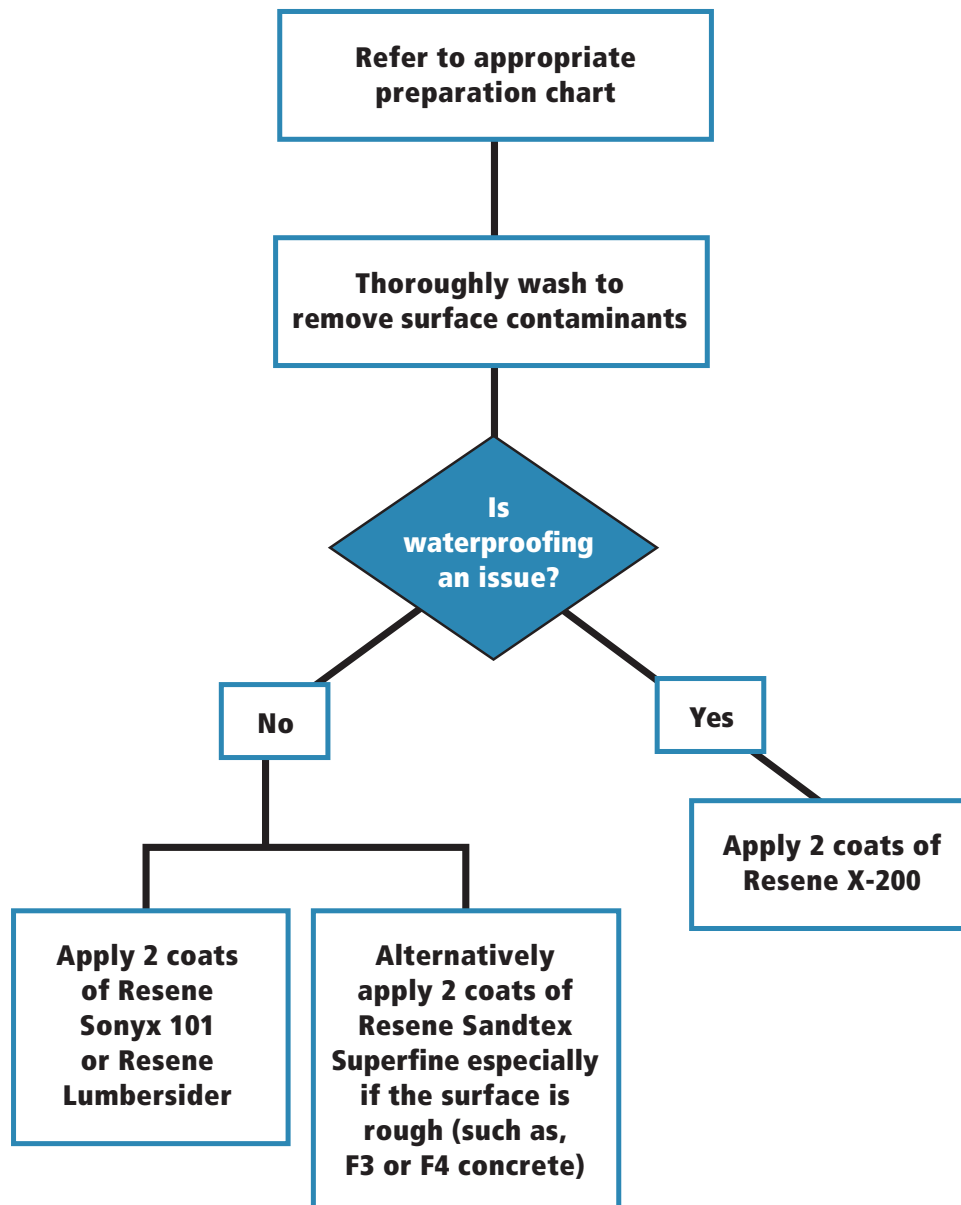




Commercial – precast and in-situ concrete, fibre cement panels, tilt slab



- i) An optional glaze coat of Resene Multishield+ may be applied to increase durability and dirt resistance.
- ii) Resene Uracryl clear glaze may be used as an anti-graffiti glaze coat.

Things to consider

- **How is the building is constructed?**
- **What colours do you have in mind?**
- **What sort of look or finish are you looking for?**
- **Is waterproofing an issue?**
- **Who will be doing the painting?**

Commercial

1. For this section on commercial buildings we have not included high rise buildings. Also many older commercial buildings will typically fall into the heritage, Art Deco or masonry categories.
 2. Most recently constructed commercial buildings will at least in part be clad with a cementitious product, usually either:
 - Compressed sheet, such as Titan Board or ExoTec panels
 - Concrete block
 - Poured or precast concrete
 - Harditex, Hardiflex or Monotek (or similar)
- These substrates are usually used in combination with other building products, such as COLORSTEEL® or COLORBOND®.
3. Anti-graffiti coatings may be required – often a Resene Uracryl glaze coat is applied up to 3 metres high in areas that are likely to be ‘tagged’. Graffiti is more difficult to remove the longer it is left on the wall and if the surface is textured or rough. Please contact Resene for more information on this option.
 4. For a building that is already painted, our best recommendation would usually be Resene Sonyx 101.
 5. A glaze coat, such as Resene Sun Defier or Resene Multishield+, will extend the life of the paint coating and is ideal for signage and where the building has been painted in identifiable corporate colours, which are typically strong shades. This will extend the time until the next repaint or the longer the paint will retain its original colour, important for signage and defining colour schemes.
 6. Resene Sandtex Superfine was developed initially for the Australian market for commercial and residential construction where the use of concrete and cement renders are common. Resene Sandtex Superfine will help disguise surface imperfections.

Key accessories essential to complete the job

- 50-75mm Legend or Haydn Ultimate brush
- Extension pole (depending on access)
- Fillers as per schedule
- Hi solids roller for Resene Sandtex Standard or PAL No.2 for Resene Sandtex Superfine
- Lambswool or PAL No.3 roller sleeve for Resene X-200 and/or rough surfaces
- PAL No.1 or No.2 roller sleeve
- Resene Paint Prep and Housewash
- Roller tray and handle

Add-ons – to make the job easier or quicker

- Dropsheet/s
- Masking tape – for around windows etc