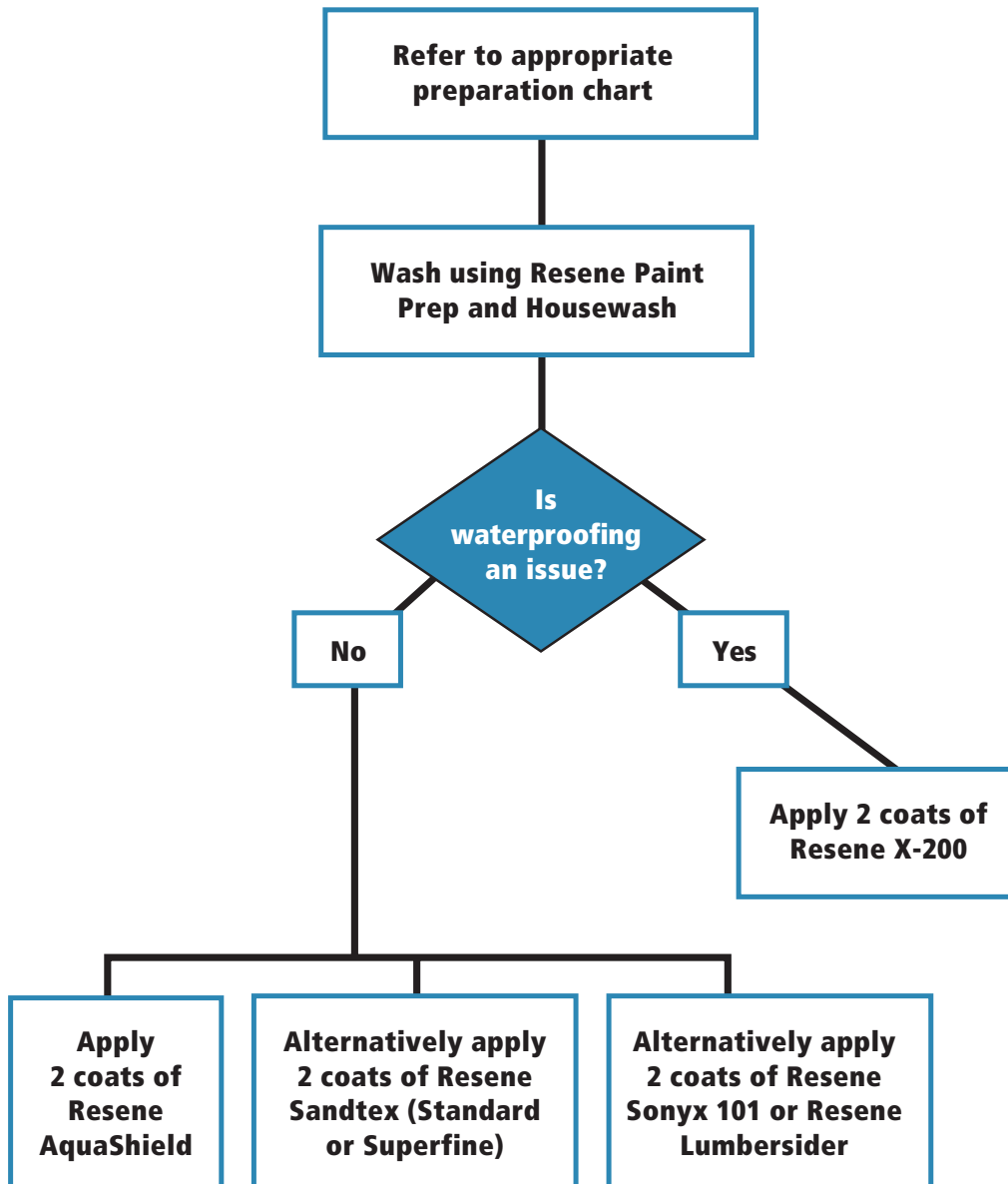




## Mediterranean, monolithic, stucco and masonry



## THINGS TO CONSIDER

- **Consider the style of the house.**
- **What condition is it in?**
- **What sort of finish or look are you looking for?**
- **Is critical light an issue?**
- **Is waterproofing an issue?**
- **What colour do you have in mind?**
- **Will you be undertaking the painting yourself?**

### **Mediterranean, monolithic, stucco and masonry**

When a building or construction method is described as being 'monolithic construction' this is a reference to how it looks.

Monolithic buildings may be any age including Art Deco and old masonry but in the main, it refers to modern construction and building types including EIFS systems like Rockcote, Harditex and plasterbased systems.

Unless there are waterproofing issues, the choice of topcoat will be the same and dependant on the aesthetics of the building.

Mediterranean homes are also monolithic but are used to describe a house that has small or no eaves and has a Mediterranean 'look' to it. Typically they are built using textures, plastered fibre cement sheets or plastered masonry. Actual Mediterranean dwellings were typically painted in flat or low sheen finishes and in Italy and Spain limewashes were common.

- Resene AquaShield replicates the look and style of the Mediterranean. It is dead flat and has a chalky aged look to it, but it is both durable and water resistant making it the ideal system for New Zealand and Australian masonry finishes.
- White Resene Sonyx 101 and Resene Lumbersider will both perform well on masonry. Many customers select Resene Lumbersider because of its lower gloss, which will help to disguise surface imperfections and is particularly suited to rougher older textures and Monotek systems.

#### **Key accessories essential to complete the job**

- 50-75mm Legend or Haydn Ultimate brush
- Extension pole (depending on access)
- Fillers as per schedule
- PAL No.1 or No.2 roller sleeve, lambswool or PAL No.3 for Resene X-200 or for rough surface
- Resene Paint Prep and Housewash

#### **Add-ons – to make the job easier or quicker**

- Dropsheet/s
- Masking tape – for around windows etc