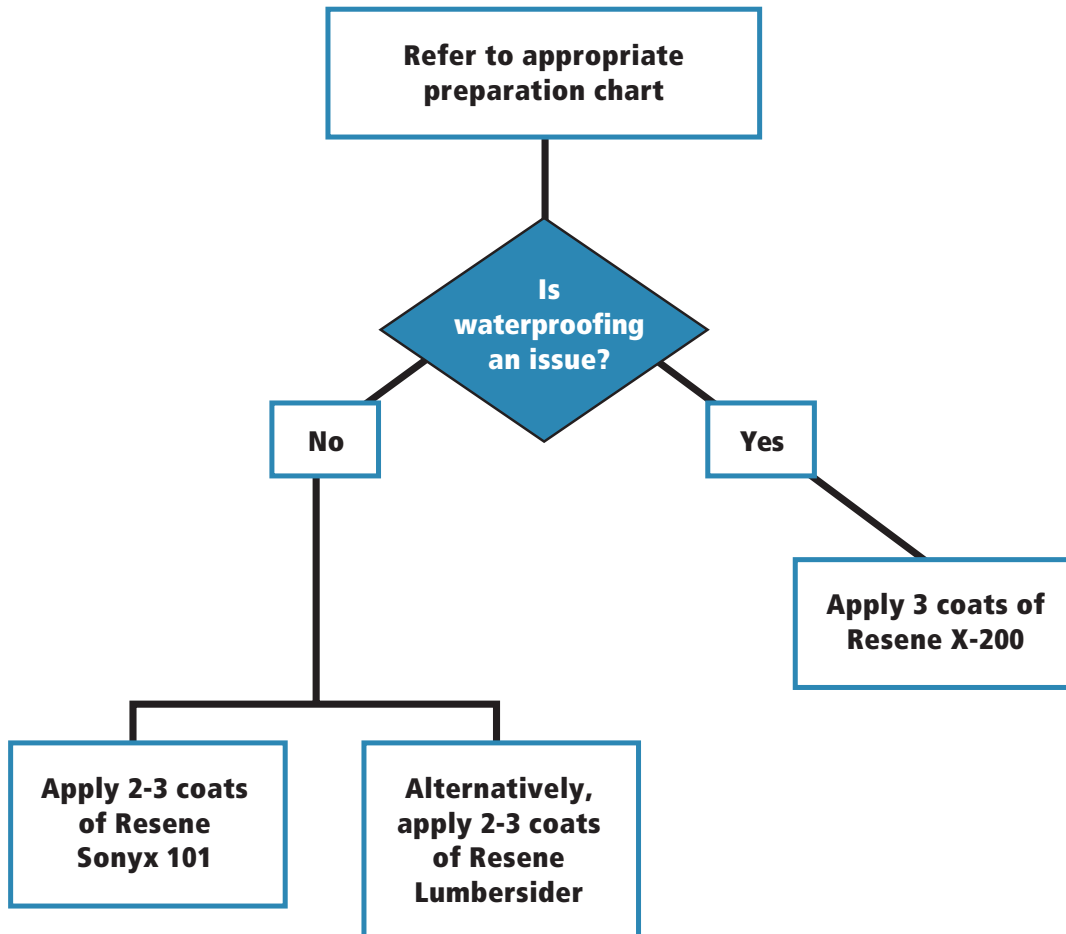




Concrete blocks / blockwork



We often get requests for a clear finish on blockwork and concrete and while it is possible to apply Resene Multishield+, Resene F-10 Glaze or Resene Uracryl clear directly to blockwork it may be problematic. This is because any moisture that gets trapped behind the clear film will make the film cloudy. This effect will disappear as the surface dries. Because none of these products are applied thickly enough and blockwork has so many holes and voids it is inevitable that this will occur.



The best solution is to ensure the pointing (the plaster between the blocks) is of a high standard, ideally with added water repellent, and then saturate the wall with Resene Aquapel.

Things to consider

- **How old are the blocks?**
- **What condition are they in?**
- **Is waterproofing an issue?**
- **How large is the area to be painted?**
- **What colour do you have in mind?**
- **Will you be undertaking the painting yourself?**

Concrete blocks / blockwork

- Unpainted concrete blocks usually need waterproofing with Resene X-200. Resene recommend that three coats are applied to ensure that all the voids and holes in the blockwork are filled and therefore waterproofed.
- On new blockwork it is not usually necessary to use Resene Concrete Primer, however if the surface is old, use Resene Sureseal, even if three coats of Resene X-200 are to be used. This is to prevent salt staining, reduce surface porosity and ensure the surface is sound.
- Use two to three coats of Resene Sonyx 101 or Resene Lumbersider, however if either Resene Sureseal (old blockwork) or Resene Concrete Primer (new work) is used, only two coats of the topcoat will be generally needed. If using a red or yellow, a third coat of the topcoat may be required.
- Resene AquaShield may be used as an alternative to the above giving a flat finish with the outline of the blockwork showing through.

Key accessories essential to complete the job

- 50-75mm Legend or Haydn Ultimate brush
- Extension pole (depending on access)
- Fillers as per schedule
- Lambswool or PAL No.3 roller sleeve for Resene X-200 or a PAL No.2 roller sleeve for Resene Sonyx 101 or Resene Lumbersider
- Resene Paint Prep and Housewash
- Roller tray and handle

Add-ons – to make the job easier or quicker

- Dropsheet/s
- Masking tape – for around windows etc
- Meths to remove paint splatter from windows