

the heat is on



After generations in the same family, a cliff top garden now boasts a cosy outdoor dining setting complete with a fireplace.

The owner of this Auckland property, David McCulloch, arrived here with his parents when he was just nine years old. Apart from when he went flatting in his youth, he has lived here nearly all his life. "When I married Laurel, we ended up buying the house from my parents and coming back."

He says the garden was a lot different back then. And it stayed that way while David and Laurel's children grew up. There was a lawn for the dog and the obligatory sand-pit for the children to play in. They built a room for the spa towards the front of the section, "but the rest was covered in the old, exposed aggregate that you used to get".

When the children left home a couple of years ago, David and Laurel decided it was time to refurbish the area to better suit their new lifestyle. "We wanted easy-care – no lawns. We wanted all the gardening to be raised at knee-height and plants that didn't require much gardening."

Although they sought to increase the amount of usable outdoor living, the challenge was the very exposed site. "Living on the side of a hill with a panoramic, 180-degree view, you get the winds. So the landscaping is all about making the natural windbreaks work for you."

First to be added was a comfortable outdoor pavilion towards the rear of the section. A kind of lock-up party room, it has a sitting area, sound system and kitchenette. The pavilion left a sheltered area against the boundary, handy to the house, where they could establish an outdoor living area, large enough to accommodate up to about 20 people for a dinner party, that still captured the views.

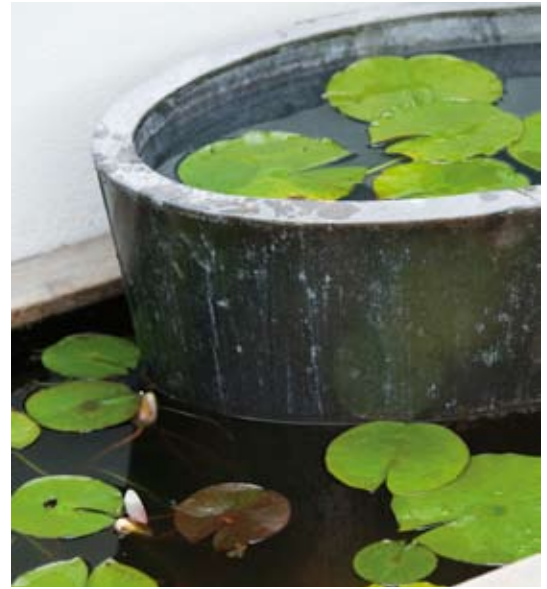
The McCulloch's top priority was an outdoor fire – a real log fire to create the warmth, the ambience and the smells. "It simply had to be a real fire," says David. "A lot of people tried to convince us otherwise because gas would have been a lot easier. You wouldn't need all the logs and wind wouldn't be such a consideration. But now everyone loves it. It's amazing how everybody wants to put another log on the fire or toast marshmallows late at night."

While the McCullochs were keen to make a contemporary statement, the design had to marry with the house, a bungalow built in 1921. Timber framing above the area is in keeping with the original home. So, too, are the white weatherboards that support the raised garden beds. These are edged with a double layer of kwila timber which not only matches the silvery timber used on the decks, but provides another place for guests to sit.

Look after your wooden deck - stain with Resene Kwila Timber Stain or Resene Furniture and Decking Oil to enhance its natural good looks.

- Resene Afficionado
- Resene Buffalo





Landscape designer Melissa Grove of Ambrosia Design devised a way to better link the setting to the view using a boardwalk of kwila. Against a bed of small-leafed, green groundcover between the outdoor setting and the boardwalk, this device sweeps the eye from the entry gate, past the house and out towards the view.

Melissa's planting scheme – a mix of small subtropical palms, agaves, bromeliads, red flaxes and gardenias – is confined to the raised garden beds, softening the vertically slatted, dark-stained timber fence behind.

In such a setting, lighting had to be carefully planned so as not to distract from the view at night. Lights are concealed in garden shrubs or feature as small copper up-lights on the tent-like timber structure surrounding

the area. Sound is also incorporated, by remote from an iPod in the pavilion, linked to tiny speakers underneath the Clearlite roof.

A long radiant heater attached to the roof means the McCullochs and their friends or family can sit outside at night and not have to cram around the fire to stay warm.

The other thing they envisaged to make this outdoor room perfect was a water feature with the soothing sounds of a fountain. Not quite completed, an antique copper basin floating in a small pond of water lilies awaits the plumbing which will bring this dream to fruition. In the meantime, many happy days and nights are now being spent in the garden, enjoying the breathtaking backdrop, irrespective of the weather. **H**

outdoor fireplaces

Before installing an outdoor fire, consider the following points from Heat Outdoors, the company which built the McCulloch's fireplace:

1. Do you want a wood or gas fire? If you simply want ambience and something that's easy to maintain, go for gas. Wood fires have a greater heat output, but they can be messy and you need somewhere to store the logs. There's nothing like a wood fire, however, for a truly evocative setting.
2. Determine the best position for the fireplace to make it the focal point of an outdoor setting. Create a cosy courtyard feel, away from the wind in a protected position. While indoor fires can be put anywhere in an inside room, high and unpredictable winds compromise the efficiency of your outdoor fire. Wood fires especially can be smoky if placed in a draughty spot.
3. Outdoor gas fires need gas certification and in some cases, building consent. The chimney flue is typically taller for outdoor wood fires so in most cases building consent would be required, and depending on your location you may need resource consent as well. Fireplaces must be built approximately one metre away from the boundary.
4. Effective gas and wood fires need the correct ratio between chimney dimensions and the fire opening. It's all about balancing the amount of air needed to 'draw', with the height necessary to extract the exhaust.
5. Outdoor fireplaces can be made from a variety of products. Heat Outdoors recommends building with concrete products for safety and durability. They can be left raw or finished in brick, plaster or schist. Heat Outdoors has recently launched a locally produced fireplace made of lightweight concrete which, as a 'complete knock down' (CKD) unit, can easily be relocated if required.




Large Tic Tac Toe for outdoor use (limestone composite with stainless steel) from May Time Marketing

Resene Aspiring 


Subtropical plants include bromeliads and agaves

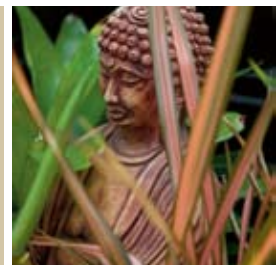
Outdoor seagrass cushions in a carry-bag set of four with olive green trim from May Time Marketing

Resene Woodstock 



Get the washed terracotta look with Resene Beethoven used as a colourwash effect.

Resene Beachcomber 




Limestone composite decorative bird from May Time Marketing

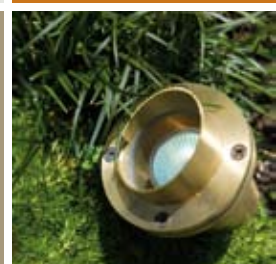
Nairobi tealight holder, limestone composite for outdoor use, from May Time Marketing


Resene High Five 


Copper lighting for weather resistance and good looks

Get the dark-stained timber look with Resene Waterborne Woodsman tinted to Resene Crowshead.

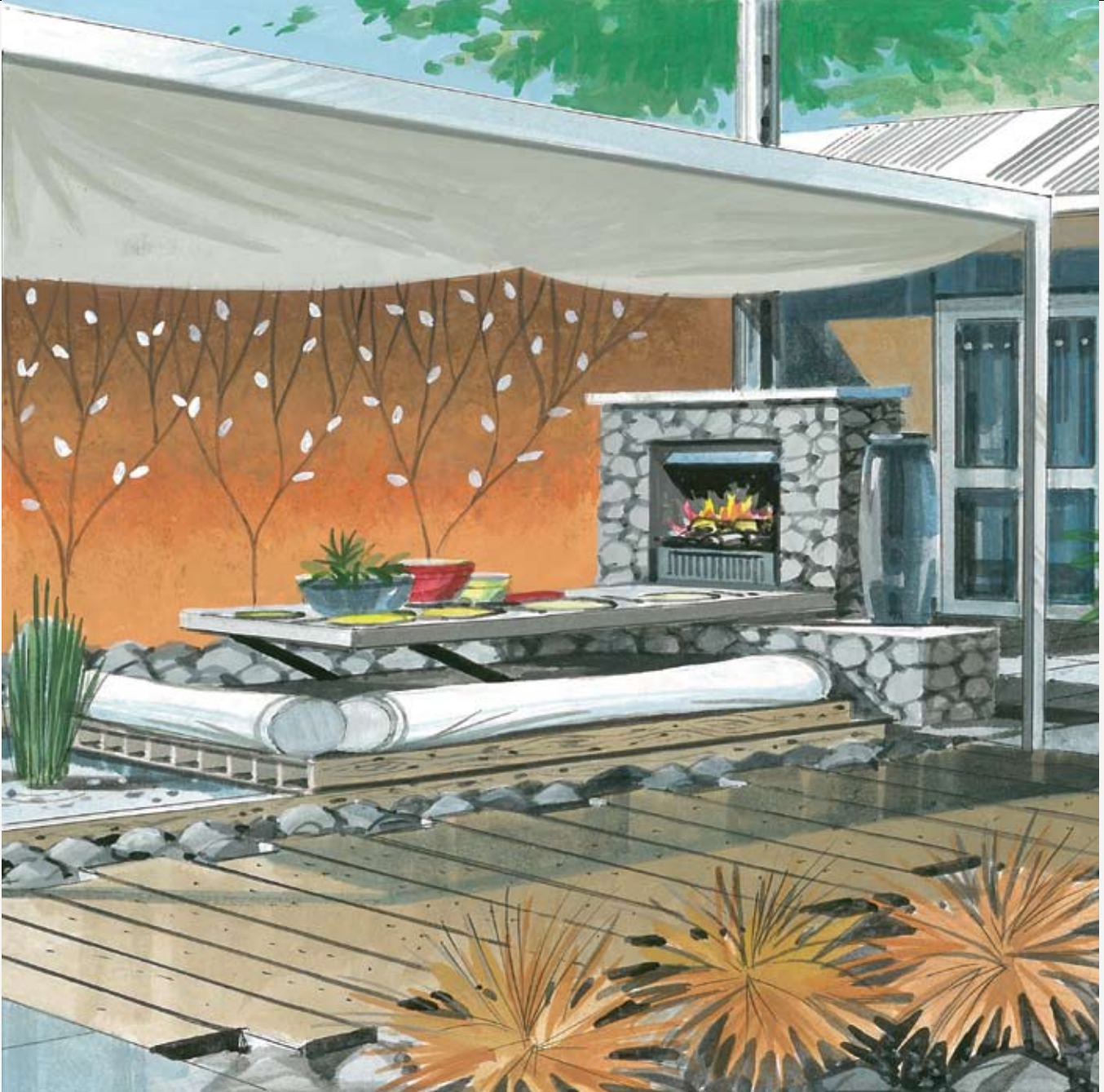
Resene Cargo 



Resene Pitch Black 



on the following pages,
find two alternative
style suggestions



^ This outdoor dining area smoulders with style.



Oi oi (*Leptocarpus similis*)

Kings Plant Barn
0800 PLANTS
www.kings.co.nz



concrete table

Custom Concrete Ltd
www.customconcrete.co.nz
0274 889 950



New Zealand iris (*Libertia grandiflora*)



M3 Standard pot with
graphite glazed finish

Burrelli
www.burrelli.com
03 384 4722



Jetmaster outdoor fire

The Fireplace
www.thefireplace.co.nz
09 623 6990



Resene Tea

Resene Moroccan Spice

Resene Barbecue

Resene Topspin



This design draws on our raw, primeval landscape, and features muted, natural colours, with a limited planting selection to suit the city courtyard setting. River or volcanic boulders are set around a sunken seating area with comfortable cushions and bolsters. At the end of the concrete-slab table is a stone-clad fireplace topped with a smooth plastered cap. A boardwalk of chunky macrocarpa runs along one side, past the dark-tiled pond. Fine steel tracery welded into tree-like shapes adorns the plastered perimeter wall, which is painted Resene Moroccan Spice. A white shade sail suspended in a lightweight steel pergola shades the seating area during the day. At night, the space is transformed by pond lighting, fairy lights, and a subtle red glow emanating from beneath the decking.

Jeremy Head

from Landscape Architect, suggests this alternative landscaping scheme:

J.E. Head.

phone 03 326 7379, mobile 021 308 048, email jeremyhead@xtra.co.nz



^ Cool and crisp, an inviting spot to linger.

>>

Agave
(*Agave attenuata*)

>

LouvreTec alloy louvred roof

LouvreTec
www.louvretec.co.nz



<

Star Jasmine
(*Trachelopermum grandiflora*)

>

Fatboy 2200 Rectangular Setting

Devon Lifestyle Ltd
09 274 6260
www.devonlifestyle.com



Resene
Backcountry 

Resene Feverpitch

Resene Lemon Twist

Resene Mondo



<

Kentia palms
(*Howea forsteriana*)



Campbell Strachan
from Landscape Leaders, suggests
this alternative landscaping design:

This low-maintenance outdoor space has a warm and refreshing feel with a clean, modern look. Elements of fire and water add vitality. The focal point of the space is the wet wall water feature on the rear fence. Water flows down the stones to a small pond, then through a shallow exposed aggregate riverstone bed and into a rectangular pond. Kentia palms flank the plastered fireplace, while the rear wall is softened by fragrant, espaliered star jasmine, which complements the white flower of the renga renga lilies at the base of the wall. The powder-coated aluminium roof fitted with adjustable louvres provides shade and additional light as required.

phone 09 434 6407, mobile 021 557 658, email campbellstrachan@hotmail.com