

Colour code

Canterbury Resene colour specialists Honor Moore and Jackie Nicholls share their tips on introducing beautiful hues into your home.



RESENE
Coast



RESENE
Half Dusted
Blue

Left Wall and coffee table in Resene Half Dusted Blue; arch in Resene Coast; floor in Resene Surrender.



Resene Utopia Wallpaper Collection 91171

Honor Moore

RESENE COLOUR CONSULTANT

Home owners are finally embracing colour. What new shades are coming through? Warm neutrals with a suggestion of colour and inspired by nature, such as Resene Quarter or Eighth Truffle or Resene Eighth Bison Hide.

Where are new trends being applied? Smoky greens in classic white kitchens add depth and personality. Some of my favourite greens are Karen Walker Windblown Green, Karen Walker Half Washed Green and Resene Helix, which work beautifully with natural timbers and white tiles.

What classic colours will always play a part in interiors? Blues and greens are subtle and soothing, and often chosen for bathrooms and bedrooms. Resene Emerge, Resene Half Inside Back or Resene Dusted Blue all stand the test of time, paired with a crisp white such as

Resene Double Alabaster or something more vintage like Resene Elderflower.

How would you advise clients to use dark tones at home? Dark tones can be very welcoming, cosy and create a dramatic backdrop. They can bring a beautiful view in, shut the world out, define a space or lower a very high ceiling. Media rooms are the perfect space for deep moody colours that create atmosphere.

Which rooms benefit from wallpaper. Bright statement papers are great for transitional areas such as an entrance or powder room as they create an element of surprise. Flowers, lush foliage, exotic wildlife and geometrics are centre stage.

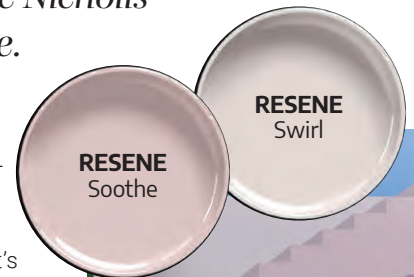
Jackie Nicholls

RESENE COLOUR CONSULTANT

What common mistakes do people make when deciding on a palette? It's very important to consider everything around a colour as it will have an effect on how you see it. When in store, always look at the larger samples (A4 size) and if possible, bring in samples of flooring or fabrics to see which undertones work. We have Resene Colour Specialists in the stores who can help you. When trying samples at home, brush two coats of a test pot onto a large piece of cardboard (not on the wall) then hold it up against the trims, artwork and cabinetry. Lighting and proportions are different in every home so you are more likely to make the right choice when viewing it in situ.

How do you create interest without repainting every room in the house?

Think outside the square. Colour blocks can look stunning and are easy to achieve. The lower wall in a child's room or study area can add interest and define an area. Even a large square or circle of colour on



RESENE
Soothe

RESENE
Swirl



Above Mural in Resene Polo Blue (sky); Resene Paradise (pool); Resene Soothe (main wall, steps); Resene High Tide (door, window). Below left Wall in Resene Secrets with FX Paint Effect medium mixed with Resene Paddock.

a wall can look stunning with artwork or a shelf mounted on it. Look at colours such as the subtle pink of Resene Soothe, the soft butterscotch of Resene Alamo or earthy green of Resene Paddock. For a fresh look, try wallpapers on large panels mounted on the wall, or even on a large Customwood circle.

Which neutral tones are trending?

Cooler whites such as Resene Black White and Resene Alabaster are still very popular, but many people are looking for slightly warmer tones, such as Resene Quarter Thorndon Cream or Resene Eighth Sisal, which is lovely in an older home. Smaller accents of dark neutrals such as Resene Nocturnal or Resene Porter add an edge and a focal point.

Visit www.resene.co.nz and www.habitatbyresene.co.nz for colour and paint ideas and inspiration.

Colours are as close as printing process allows. Always view Resene testpots or colour charts before making your final choices.



RESENE
Secrets

RESENE
Paddock

