

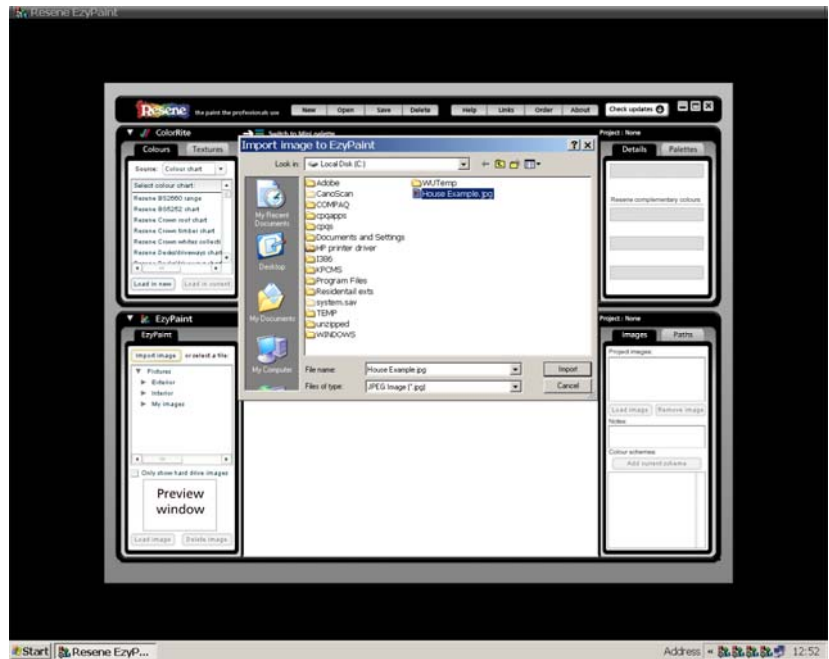
How to path a picture in



Step 1

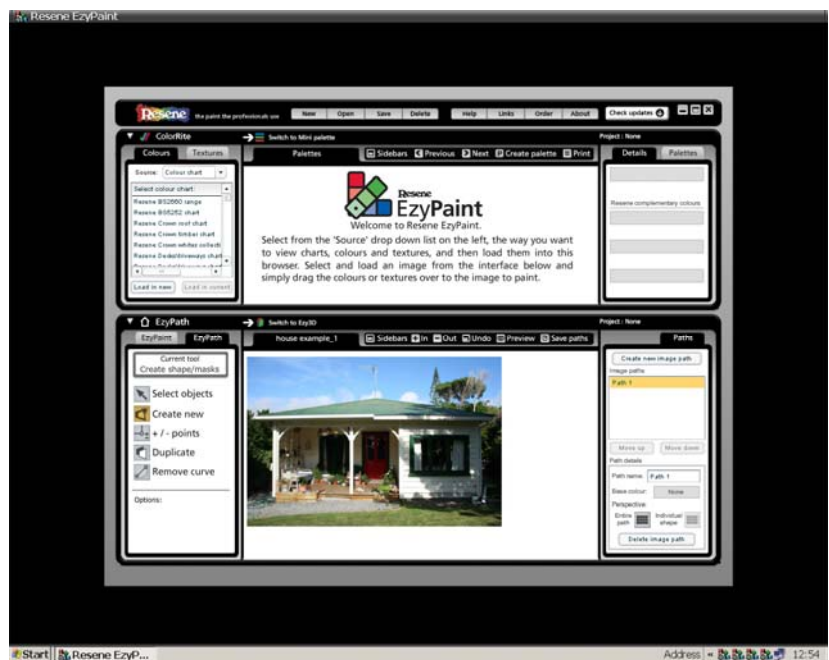
Open EzyPaint and click on Import Image (left sidebar). Select an image that has been saved onto your computer. This image must be a jpg file and no larger than 1600x1200 pixels.

When opened, your Image will appear in the main EzyPaint screen.



Step 2

Click on EzyPath (left sidebar, next to EzyPaint).



Step 3

Go to Paths (right sidebar). Path 1 will show up. Change Path 1 to the name is the area you will path, such as Roof.



Step 4

Directly below path name is Base colour. Hold your mouse down over the rectangular space next to Base colour and drag your mouse over the area you will path, such as Roof.

Release your mouse over the most common occurring colour on that area (don't choose an area that has heavy shadow or bright light).

You will notice the base colour changes to the colour on the image you have selected.

Step 5

Once the path name and base colour are selected you are ready to path the area.

Go to Create New (left sidebar). It may help to zoom in on the image so you can clearly see the area to path. To zoom in see the central bar just above the image, which will show +in and -out.

Step 6

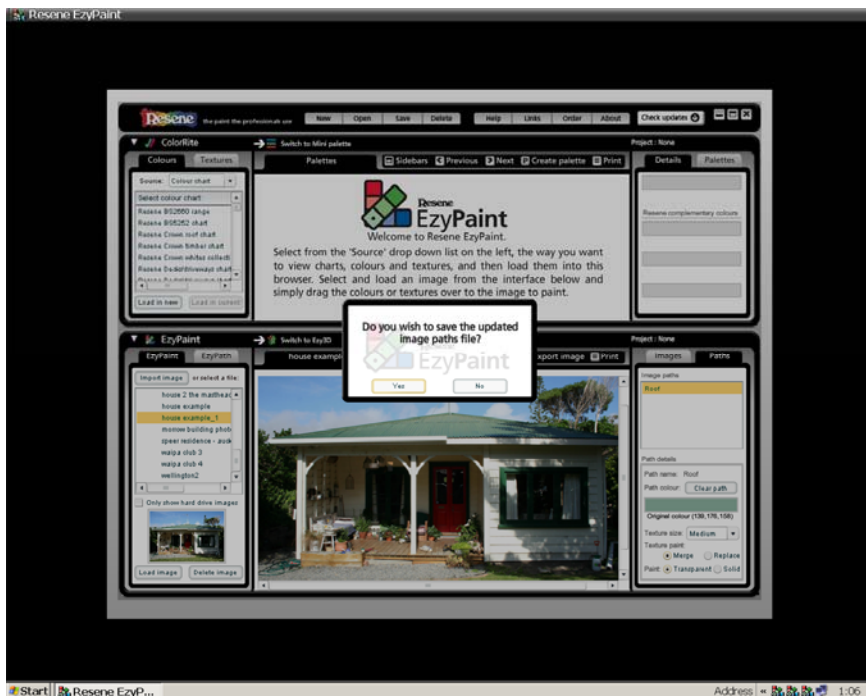
Using mouse clicks, click on an edge of the area you are pathing. Keep clicking your mouse around the outline of the shape you are pathing and the clicks will be joined with a red line (you can make as many clicks as you like).

When you return to the starting point, click on this and it will make the entire outline bright blue (pathing is basically tracing around the outline of a shape so the software will recognise where to put the colour).



Step 7

Now you are ready to apply colour to the area you have pathed. Click on the EzyPaint Tab (left sidebar). It will ask if you want to save the updated image paths file - click on YES.



Step 8

Go to ColorRite (top left sidebar) and select a chart, such as Resene Crown roof chart.

When you have selected a chart, click on Load in new and colour swatches for that chart will appear in the main screen.



Step 9

Using your mouse, click on a colour swatch and holding your mouse down, drag it over the area you have pathed. This will colour the area.

Every area, such as Roof, Fascia, Walls should be on separate paths and have separate base colours.

When you path an area that has an object you don't want coloured over (such as, windows on a wall path), simply path out the area by pathing around the windows inside the wall path.

While pathing, if you make a click you want to delete, go to undo (central bar).

If you want to move points made, go to Select objects (left tab) and hold your mouse down over a point and drag to widen etc.