

## net contents 1 litre

tinter included

LL13801PS 6/16

### SAFETY PRECAUTIONS

Read label before use. Keep out reach of children. Harmful to aquatic life with long lasting effects.

### PRECAUTIONS

USE WITH ADEQUATE VENTILATION. DO NOT EAT, DRINK OR SMOKE WHILE USING.

Store in original or correctly labelled container, tightly closed, in a well ventilated area indoors, away from foodstuffs, either between 15°C-20°C or at a cool, constant temperature. Dispose of empty container safely. Consult Resene checklist on environmentally acceptable methods of cleaning equipment and disposing of unwanted paint. Avoid release to the environment.

### FIRST AID

IF SWALLOWED: Rinse mouth. Call a POISON CENTRE, doctor, physician or first aider if you feel unwell.

IF ON SKIN (or hair): Rinse skin with plenty of soap and water. If skin irritation or rash occurs: Get medical advice or attention.

IF IN EYES: Rinse cautiously with water for several minutes. Remove contact lenses, if present and easy to do so. Continue rinsing. If eye irritation persists: Get medical attention or advice.

IF INHALED: If breathing is difficult, remove to fresh air and keep at rest in a position comfortable for breathing. When seeking medical advice take this container with you.

Further information can be obtained from  
AUST: POISONS INFORMATION CENTRE 131 126  
or call Resene 1800 738 383.

NZ: NATIONAL POISONS CENTRE 0800 POISON  
(764 766) or call Resene 0800 737 363.

CONTAINS: Methyl Methacrylate Homopolymer 30-60 gms/L, 2,2,4-Trimethyl-1,3-Pentanediol Monoisobutyrate 10-30 gms/L, Benzoic Acid C9-11 Alkyl Esters, branched 10-30 gms/L.

For use as a decorative/protective coating.

For full technical instructions see Data Sheet D312.

**SPILLS:** Wear appropriate clothing. Absorb with sand or earth. Collect and seal in properly labelled drums. Do not allow to enter drains or to run off into waterways. Refer to local waste management authority.

**CLEANING PAINT EQUIPMENT:** Brush/roll out as much paint as possible onto newspaper before washing brushes and rollers. Dispose of wash-up water onto grassy/unsealed area or into inside sink/basin, NOT into outside stormwater drain where it may harm fish in local waterways.

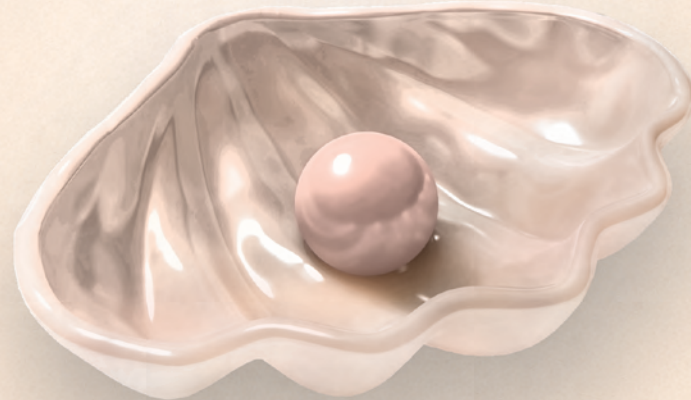
# WARNING

KEEP OUT OF REACH OF CHILDREN

# Resene

## FX Pearl Shimmer waterborne pearlescent glaze

exterior/interior



PEARL

Resene FX Pearl Shimmer is a waterborne pearlescent glaze designed to be applied over a wide variety of painted substrates, including trim and joinery, to add a soft shimmer effect to the surface.

### Preparation

- Ensure substrates to be coated are in sound condition, dry, free from dirt, dust, loose material, oil (including mineral oil based wood finishes or similar) and salt.
- Remove accumulated windblown salt by washing with Resene Paint Prep and Housewash (see Data Sheet D812).
- Oil and grease must be removed using Resene Paint Prep and Housewash. If mould is present, treat with Resene Moss & Mould Killer (see Data Sheet D80).
- Corrosion on metals should be removed.
- Fill cracks and holes with an appropriate filler after priming.
- Plasterboard must be prepared to an appropriate level of finish. Either Resene Broadwall Surface Prep & Seal (see Data Sheet D807), Resene Broadwall 3 in 1 (see Data Sheet D810) or Resene Sureseal (see Data Sheet D42) followed by lining paper is recommended in critical lighting areas.
- **All sanding dusts may be harmful and appropriate protection must be worn. In particular dusts from old lead or chromate based paints or old building materials containing asbestos may be injurious to health if inhaled or ingested. Seek expert advice if the presence of these materials is suspected.**

- For new work ensure the surface is sanded to a smooth finish and dusted off. Round all sharp edges. Ensure the surface is dry before painting.
- For repaints thoroughly sand and wash to remove all signs of surface contamination. Ensure the surface is dry before painting. Spot prime bare areas.
- This product may be used to coat a wide variety of surfaces. If the surface you propose to coat is unsound or not referred to, try a small test area first or contact your local Resene ColorShop or Reseller for advice.

### Priming/undercoat

- Resene TimberLock (see Data Sheet D48) is recommended on Cedar and timber joinery before priming.
- Prime timber with Resene Quick Dry (see Data Sheet D45). Resene Quick Dry must be used as the first coat on Matai, Spotted Gum, Totara, fibre and particle board.
- For metals, use the appropriate Resene metal primer followed by Resene Quick Dry.
- Plasterboard and stoppings should be primed (e.g. Resene Broadwall Waterborne Wallboard Sealer - see Data Sheet D403). Fibrous plaster should be sealed with Resene Sureseal.
- Hardboard must be sealed (e.g. Resene Sureseal) to promote flow of the topcoats. Use Resene Sureseal if the surface is water

stained or if condensation is likely to form on the surface..

- Some 'soft' plasterboard preparatory products and undercured gypsum based stoppings may not be suitable basecoats for painting under stressed conditions. Reinforcement with a saturation coat of a fully penetrating primer (such as Resene Sureseal) may be required. Use Resene Sureseal or Resene StainLock (see Data Sheet D408) if the surface is water stained or has yellowed due to prolonged exposure to sunlight.
- Repainting - spot prime with Resene Quick Dry.
- Undercoat with two full coats of a Resene waterborne basecoat in your chosen colour. Allow two hours minimum to dry. Because Resene FX Pearl Shimmer will dramatically soften the colour of your basecoat, try a small test area of your chosen basecoat using a Resene testpot for the basecoat and Resene FX Pearl Shimmer as the finish glaze to confirm your basecoat colour choice.

### Topcoat

- Apply one coat of Resene FX Pearl Shimmer.
- Brushing is suitable for small areas and textured surfaces only.
- Spray application is recommended to achieve an even monolithic effect.
- If a paint effects finish is required, follow the techniques in the Resene Paint effects brochure or brush on in a random criss-cross manner until the desired effect is achieved. Special effects can be created by varying film thicknesses.
- The use of a textured basecoat, a well-planned lighting scheme and/or a curved surface will accentuate the pearlescent effect.
- Touch ups should be avoided, as difference in appearances may be apparent. An entire application is preferred to provide a uniform finish.
- The final appearance will depend on the basecoat colour and the method of application. Always prepare and agree on a sample panel before commencing work.
- Full toughness requires at least 48 hours to develop in average drying conditions.
- Maintain good ventilation throughout the drying and curing period to ensure the paint is properly cured. Poor ventilation may inhibit curing and performance.
- For best results, surface preparation and application techniques are critical. Either refer to Data Sheet D312 or visit your local Resene ColorShop or Reseller.

### Maintenance

(after a minimum of four weeks' drying)

See the Resene Caring for your paint finish brochure or the Resene website for full cleaning instructions.

### Be PaintWise

For tips on minimising the impact of your decorating on the environment see the Resene website.

## Quick check

**Use on:** Most waterborne paint systems where a pearlescent finish is desired.

**Gloss level:** Pearlescent glaze

**Coverage:** 10-40 square metres per litre per coat dependent on surface and technique. If a stronger pearlescent finish is required, try a test area with an additional coat.

**Dry time (minimum):** Touch dry 45 minutes. Do not apply at temperatures below 10°C or when temperatures are liable to drop below this during the drying period. Drying is slowed by low temperatures and high humidity. Do not apply under damp conditions.

**Recoat time (minimum):** 2 hours.

**Primer required:** Yes

**Usual number of coats:** One.

**Application method:** Brush, roller or spray. Spray application is recommended in critical light areas or where a monolithic finish is desired.

**Thinning:** Resene Hot Weather Additive or water.

**Clean up:** Water.

**Colour:** Applied over all Resene Total Colour System colours to give a pearlescent effect. The pearlescent pigment will soften the appearance of the basecoat colour. May also be lightly tinted to give a coloured pearlescent glaze.

**Before use:** Stir well with a wide flat stirrer.

Enjoy the Resene Promise of quality on premium paints. See your Resene ColorShop or the Resene website for a copy.

In every case it is recommended that the appropriate Safety Data Sheet is consulted prior to application.

Please ensure that use of this product is compatible with the substrate and surface preparation method and that the colour in this container is the same as selected. Resene does not accept any responsibility for the application of incorrect product to substrate or the application of incorrect colours. For further painting advice and information, call 1800 738 383 (AUST), 0800 737 363 (NZ) or visit the Resene website.



# Resene

the paint the professionals use



In Australia: Resene Paints (Aust) Limited  
7 Production Ave, PO Box 324, Beenleigh, Qld, 4207  
Phone 1800 738 383 Fax 1800 064 960  
Email advice@resene.com.au or visit www.resene.com.au

In New Zealand: Resene Paints Limited  
PO Box 38242, Wellington Mail Centre, Lower Hutt 5045  
Phone (04) 577 0500 Fax (04) 577 0600  
Email advice@resene.co.nz or visit www.resene.co.nz

Manufactured under a quality system certified as complying with ISO9001 by Telarc SA, an accredited certification body. Printed on environmentally responsible paper which complies with the requirements of environmental management systems EMAS and ISO14001, using vegetable-based inks.