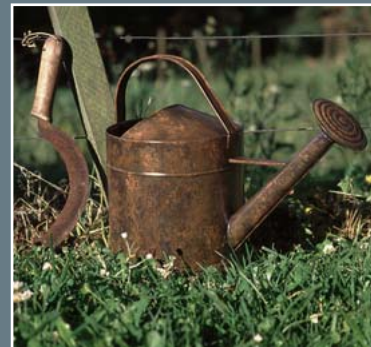


Paint Effects

Sponging

One of the easiest paint effects techniques is sponging. It may be used as a basis for other finishes, such as marbling, and provides a lovely textural background for hand painted designs.



You will need:

- 25-33mm paintbrush
- Dishes for paint
- Fine mist sprayer
- Galvanised watering can
- Resene Multishield+ flat
- Resene Galvo-Prime
- Resene testpots in Resene Cod Grey, Resene Dark Rum, Resene Irish Coffee, Resene Lusty and Resene Rope
- Sponge
- Spoon

Tips:

Before you start working, soak the sponge in water, then squeeze out as much moisture as possible. This prevents the paint drying in the sponge.

Coarse textured sponges provide a more lacy, open pattern and finer sponges a smoother, softer look. The best effects are achieved with the more expensive natural sea sponges, but synthetic sponges also work well if you are working on a budget.

The pressure you apply when sponging will affect the size of the pattern. Practice on a piece of paper first until you are happy with the effect.

See the Resene Paint Effects brochure for a range of paint effects samples or visit the Resene website for more Paint Effects ideas - www.resene.co.nz/homeown/use_colr/paint_effects.htm (NZ) or www.resene.com.au/homeown/use_colr/paint_effects.htm (AUST).

Resene Paint Effects brochures are available free from Resene ColorShops or order your copy online from www.resene.co.nz/comn/whtsnew/colrldr/order.htm (NZ) or www.resene.com.au/comn/whtsnew/colrldr/order.htm (AUST).

Method:

1. Apply a coat of Resene Galvo-Prime according to instructions and then two coats of Resene Cod Grey. Leave to dry.

2. Put a little of the four remaining colours onto dishes.

3. Dab the sponge into the Resene Dark Rum paint and pounce on the edge of the dish, or a piece of paper, to distribute the paint across the sponge.

4. Pounce lightly over the Resene Cod Grey, in a random pattern, leaving some of the grey showing through. Apply a little of the Resene Lusty in the same manner. Let this dry.

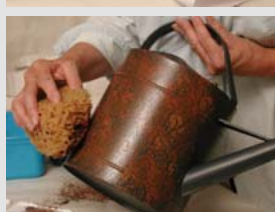
Fill the sprayer with water.

5. Load the sponge with Resene Rope and Resene Irish Coffee. Blend the colours together a little on the dish or paper. Do a small section at a time so that the paint doesn't dry before you mist it with the water.

Apply over the other colours on the watering can.

6. While it is still wet, spray a fine mist of water onto the paint – be careful not to overwet the surface! The paint will start to run gently down the can. The colours will merge to give a softer, rusty appearance. If it runs too much, gently lift some of it off with the sponge. Let it run into the crevices where rust residue would have accumulated had the can been left out in the weather.

7. More colour may be sponged on at any time, until you are happy with the colour combinations and the effect. Once you have achieved the desired effect and it is thoroughly dry, seal with two or three coats of Resene Multishield+ flat to protect the paint finish.



In New Zealand:

32-50 Vogel Street, Lower Hutt,
PO Box 38-242, Wellington Mail Centre
Call 0800 RESENE, visit www.resene.co.nz
or email us at advice@resene.co.nz

In Australia:

PO Box 785, Ashmore City, Queensland 4214
Call 1800 738 383, visit www.resene.com.au
or email us at advice@resene.com.au

Project by Janet Scard
Photography by Joseph Zou

Resene

the paint the professionals use