

How to paint a picture in



Step 1

Open EzyPaint and click on Pictures (left sidebar, either Exterior or Interior).

Step 2

Select a picture, such as:

Exterior,
Residential Exteriors,
50's weatherboard.

A small version of the picture will show up.



Step 3

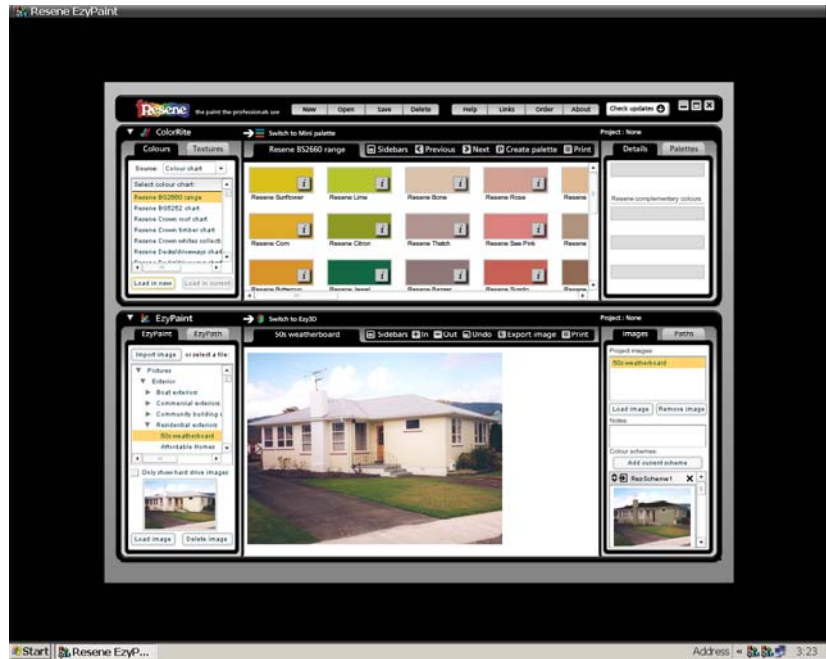
Click on Load Image (lower left sidebar). This will open a larger version of the image in the main EzyPaint screen.



Step 4

Go to ColorRite (top left sidebar) and select a chart, such as Resene BS2660 Range.

When you have selected a chart, click on Load in new and colour swatches for that chart will appear in the main screen.



Step 5

Using your mouse, click on a colour swatch and holding your mouse down, drag it over an area on the EzyPaint Image. This will colour the area.



Repeat Steps 4 and 5 using as many colours as you like to colour areas on the EzyPaint Image.