



**Resene**  
**Total Colour**  
**Awards 2011**

**Residential**

**Resene**

the paint the professionals use

[www.resene.com/colourawards](http://www.resene.com/colourawards)





The second annual Resene Total Colour Awards proudly celebrates and encourages excellent and creative use of colour.

Resene has a long history of colour in New Zealand with colours like Resene Spanish White and Resene Pearl Lusta created over three decades ago still continuing to be top choices for decorators today. In 1969 Resene set up a new system of colour, the British Standard Specification colour range which provided a range of strong colours at a time when decorators were used to pastel colours. And more recently, in keeping with Resene's focus on sustainable innovations, Resene has developed its own range of non VOC (volatile organic compound) tinters to enable all Resene decorative paints to be tinted without unwanted VOCs.

With thousands of Resene colours available, we created the Resene Total Colour Awards to recognise superb colour use and to foster creativity and innovation in colour.

Awards were given in ten categories:

- Residential Exterior
- Residential Interior
- Display/Product
- Sustainable System
- Rising Star
- Commercial Exterior
- Commercial Interior – Public + Retail
- Commercial Interior – Office
- Education
- Lifetime Achievement

and Colour Master – Nightingale Award for the best overall colour use.

We hope you enjoy viewing a range of the residential projects submitted to the Resene Total Colour Awards and that they provide inspiration for decorating projects of your own.



## Raspberry Delight Residence



With a contagious passion for life and colour, the owners of this 60s renovation were keen to have a bit of fun and let the kitchen design reflect their confident expressive personality.

Drawing on their particular passion for purple, raspberry and lime, we began by exploring complementing colour combinations and design possibilities. What evolved was a gathering of inspirational images that visually summarised our tri-palette – in particular a photo of a fuchsia flower which epitomised it perfectly.

Further inspired by a natural granite 'White Galaxy' with its splashes of raspberry-toned highlights and pewter veining, we refined our final colour palette. Resene Sensual Red was found to be the ideal hue – a pink-red – desirable

in its own right yet complementary to the owners' love of intense colour and our newly discovered granite.

Continuing to consider the granite tones, we then tweaked the rich purple to a more sophisticated violet-based pewter grey in a metallic finish for a bit of 'bling'. By specifying the gloss finish for both colours, the intensity of the Resene Sensual Red hue and shimmery reflections in the pewter were enhanced resulting in a glamorous yet striking combination.

Design wise, the three prominent faces of the kitchen display the Resene Sensual Red sandwiched by violet-grey, while around the corner the softer tones of stainless steel and mauve-based mushroom doors create a complementing combination. Keeping within the mushroom colouring, walls are treated with Resene Half Perfect

Taupe while ceilings and window trims are Resene Eighth Thorndon Cream. A feature Resene Magnetic Magic painted wall to the island offers freedom to display children's artwork and important messages.

Not forgetting our original fuchsia inspiration and colours, lime green accessories contrast superbly with the Resene Sensual Red as expected and a hint of purple sneaks its way back into the clear perspex seats adorning the island.

A brief to add personality and life to the kitchen space with just the right balance of rich colour and the owners' sense of fun and confidence in their designer, has whipped up a slice of raspberry delight in their everyday living.

**Architectural Specifier and Colour Selection:** Toni Roberts  
trdesign@xtra.co.nz  
**Kitchen Manufacturer:** Kitchen Link  
**Interior Designer:** Claire Yildiz, wall colour selected in consultation  
**Painting Contractor:** Dave Bates, Mainly Decorating  
**Photographer:** Tony Gatman

**Colours Used:** Resene Eighth Thorndon Cream, Resene Half Perfect Taupe, Resene Sensual Red

**Products Used:** Resene Lustacryl, Resene Magnetic Magic, Resene SpaceCote Low Sheen Kitchen & Bathroom,



Eighth Thorndon

Half Perfect Taupe

Sensual Red



# Summers House Wellington



Resene Total Colour Residential Exterior Award





This home was largely untouched since it was built in the early 1960s. We were asked to bring this elegant property into the new millennium, revitalised and fresh for a family of four.

The quality of the construction materials was excellent, making the redesign of the house a real joy. We opened up the kitchen and living/dining areas and removed the separate entry and dark hallway. A bank of skylights was built around the newly exposed skillion ceiling directly over the new open plan kitchen.

From the beginning we were keen to connect the exterior form with a pervasive sense of being inside within a simple folder awning like roof. There is now a much bolder flow and visual connection from inside to out, at the front and back of the home, where there was nothing before.

The exterior colour scheme is part of the

interior and vice versa. The clients were open to strong, saturated colours that revitalised this gem of the aspirational 60s suburban culture.

Anchoring the base with a deep tone we matched the new garage doors to the new aluminium windows and doors, providing a clear definition of the new architectural moves. The grey mid-blue engages with the surrounding hills, which are clad in native bush, while also delivering a crisp and confident response to the beiges and greys of the surrounding generic houses.

The other colours are mid and deep neutrals to frame and enhance the blue, the red front door and to flow through to support the interior palette of muddled rich warm earth tones.

Overall there is a delightful sense of celebration of the optimism of the 60s with a substantially more open/exterior focused, light filled family home.

Black White

Bullseye

Calypso

DNA

Stonewall

**Architectural Specifier:** John Mills  
**Architects** [www.j-m.a.co.nz](http://www.j-m.a.co.nz)  
**Building Contractor:** Jack Construction  
**Painting Contractor:** G + A Decorators

**Colours Used:** Resene Black White,  
 Resene Bullseye, Resene Calypso,  
 Resene DNA, Resene Stonewall

 Resene Awash

**Resene Total Colour Residential Exterior Award**







## Wellington Kitchen and Living Renovation

This house is a traditional 1920s weatherboard home with a high stud and was originally decorated in an English cottage style with a cramped dark kitchen that didn't suit the clients' taste or lifestyle.

The clients felt strongly that they wanted a modern, muted colour palette with a white semi-traditional kitchen. The client had seen a piece of modern art in my office that I owned and had always liked the colours used: duck egg blue, pale blue, light brown, dark brown, warm greys and white.

The kitchen and open plan living area was to refer to the architectural era of their house, but they wanted the style of the kitchen to be neither classified as a strictly traditional style or as an uber-modern minimalist style. The design had to meet somewhere in the middle and also not be totally bland in the colour palette and it needed to have texture.

A softened traditional bevel edged panel profile was incorporated into all the white cabinetry along with Linen finish stainless steel and New Brown Pearl granite to the benches as the classical elements of the design. Resene Double Alabaster on the ceilings and woodwork was used to repeat the white throughout the space and was also wrapped down the high stud walls to the picture rail to give a sense of space.

The more traditional design elements were countered by the addition of texture, which was achieved by using the Laminex Innovations Aluminum Tracery laminate to the large overhead cabinets and an island wall clad with Bestwood Zebranocon laminate. This not only broke the white of the kitchen but gave it style as well as texture. The existing matai



floorboards were stained using Resene Waterborne Colorwood tinted to Resene Black Pepper and finished with Resene semi-gloss clear polyurethane. This was a successful floor treatment as the irregular colouration and grain of the timber could still be seen through the black stain - however, it did take a certain amount of trust between myself and the client to go ahead with such a dark strong colour.

Warmth was added to the modern, muted colour scheme by the use of a warm grey palette of Resene Pravda, Resene Half Pravda and Resene Eighth Pravda. The use of orange LED lighting under the cabinetry and the purple cathedral stained glass panels to the windows were successful as accent colours and gave the colour scheme an element of fun. Elegant curtains and roman blinds made from natural glazed linen fibres in a duck egg blue/brown colour combination helped to complete the final look.

The clients love their kitchen and open plan living area and judging from the compliments they continue to receive about it they feel that the final result far exceeds their expectations.





**Architectural Specifier and Colour Selection:**  
Simone van der Plas, Encompass Ideas [www.eideas.co.nz](http://www.eideas.co.nz)

**Building Contractor:** Keith Hollows, Capital Kitchens  
**Photographer:** Adam Simpson, Station Creative

**Colours Used:** Resene Black Pepper, Resene Double Alabaster,  
Resene Eighth Pravda, Resene Half Pravda, Resene Pravda

**Products Used:** Resene Lustacryl, Resene SpaceCote Low  
Sheen, Resene Waterborne Colorwood, Resene Zylone Sheen





- Black Pepper
- Double Alabaster
- Eighth Pravda
- Half Pravda
- Pravda

 Resene Covert



Eastwood Residence





Monkey

Quarter  
Blanc

Sandcastle



This character filled home with features of art deco, needed a quick and effective recovery to bring the living area to life. The owner had bought new furniture; sofas with a very light fabric that were clashing with the existing light coloured walls. I suggested introducing a darker tone on the wall that preserved a natural colour - my solution, Resene Zylone Sheen tinted to Resene Sandcastle was applied.


The lounge room has no windows, therefore there is no direct natural light filling the room except indirect natural light coming from the sliding door of the dining area. By applying the new Resene Sandcastle colour to the lounge room walls it creates a very soft and comfortable interior to relax in. The shadows on the wall play with interesting tones of sand and warm honey without darkening the room.

The fireplace surround has a slightly scratched veneer. Instead of bringing out these details I recommended blending the wall above the fireplace with the colour, Resene Monkey. The result is fantastic, the

fireplace looks very elegant, it has a strong presence in the room and its proportion is not imposing. The contrast of the Resene Sandcastle and Resene Monkey work effectively together, while the detailed art deco display cabinet blends nicely next to the fireplace.

The trims, doorways and skirting are painted with Resene Quarter Blanc. This colour imparts a fresh and crisp finish to the room. To access the lounge room, the hallway leads you through a set of French glass doors painted in Resene Quarter Blanc that brings out the glass panels while setting the doors beautifully within the room.

Resene Sandcastle was also applied to the walls of the adjacent dining room. This open space linking in with the lounge room receives plenty of natural light. The colour reacts differently in the dining room bringing more beige, pastels and neutral tones, while the lounge area has warmer tones. This entire living area is linked together with the same colour and well defined by the light it absorbs.

 Resene Blackjack







Colour Selection: Anne Resplendino  
Interiors [www.arinteriors.com.au](http://www.arinteriors.com.au)

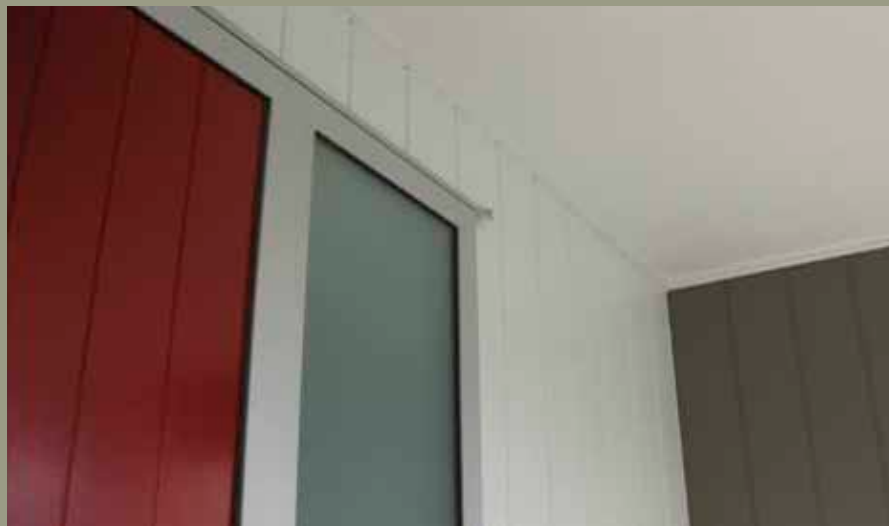
Colours Used: Resene Monkey, Resene  
Quarter Blanc, Resene Sandcastle

Products Used: Resene Lustacryl,  
Resene SpaceCote Low Sheen,  
Resene Zylone Sheen









Asteroid
Charcoal
Half Sea Fog
Matterhorn
Pohutukawa

## BHB House Exterior

This house is born of passion, a committed client, inventiveness and a sense of play, a respect for environment, an understanding of the client's needs, desires and cultural ideas, a tight budget, and attention to detail.

The site was a small, flat, low section with neighbouring houses overlooking the land. Despite all barriers, the house is carefully shaped within the height boundaries to enjoy the openness and capture the view. The layout is compact and efficient.

The owners were involved in the design process from the early stages and were adamant that they wanted their house to be in harmony with neighbouring houses. They preferred a neutral colour (white) for cost effectiveness and easy maintenance. In contrast, to maximise heat absorption,

the North elevation cladding needed to be painted in a dark colour.

The solution was to mix the cladding types, and offer a variable palette of colour. The result is a clever patchwork of colours that defines the entry point while breaking the forms and mass of walls. It offers a rich diversity of colour and texture, and unlike most properties, it is also presentable, dynamic and changes when viewed from different angles.

Resene Pohutukawa in a gloss finish is used for the door to emphasis the entry point. The neutral colour of the garage door, makes it less visible and merges the door with the back walls. Sandstone Grey is used for the roof to achieve maximum performance in summer and winter. The existing back garden fence was very old


and damaged. It is reused and cleaned. Resene Decking and Furniture Oil was used to provide a natural timber look.

The colour scheme and proportion of colours are selected to be timeless and cohesive. The patchwork paint and materials are 'mixed and matched' with care to give an original styled effect, while maintaining a harmony with landscape and surrounding buildings.

This house has three requirements of the modern mantra; space, light and a connection with outdoor. It shows a thoughtful colour scheme enhances the architecture. It shows what's possible, not just at the top of market with a spectacular location, but what might be obtained for affordable suburb housing. It raises the bar.





 Resene Lemon Grass





**Architectural Specifier and Colour  
Selection: Mitra Emami**  
**Building Contractor: Warwick Builders Ltd**  
**Painting Contractor: Pacific Painters**  
**Colours Used: Resene Asteroid, Resene  
Charcoal, Resene Half Sea Fog, Resene  
Matterhorn, Resene Pohutukawa, Resene  
Furniture and Decking Oil**



The Five Senses





Ebony  
Clay

Eighth  
Buffalo

Quarter  
Buffalo

Tuna

The brief was to create an inspiring, innovative 'Designer Feature Room' for the Auckland Home Show. The inspiration for my room was the emerging International Alice in Wonderland design theme. I created a Fantasy Bedroom for the show using 'previously loved' furniture and personal treasures to demonstrate to visitors that anything goes when it comes to creating the perfect room, without spending a fortune.

The slightly subdued mauve tones of Resene Quarter Buffalo on the walls complement the subtle powder blues, pale dove grey and white of the bed linen. The ceiling, painted in Resene Eighth Buffalo, gently cocoons the room without being overly oppressive. I chose the Resene Buffalo family to create a feminine boudoir using a sophisticated palette that wasn't overly pink and girly.

For just a few delicious moments time stands still as one enters the 'Secret


Garden'; an escape from the demands of everyday life. The focus of the room is the antique bed, dressed in a subtle palette of powder coloured linens, silks and throws. Favourite shoes, jewels and evening bags are openly displayed around the room to admire and enjoy every day. A blossom tree mural painted in one corner brings the countryside indoors. With artificial branches and blooms, birds and bird boxes, the mural springs into life in glorious 3-D as birdsong gently plays from hidden speakers, emphasising the feeling of being outdoors. The tree mural was hand painted in Resene Ebony Clay and Resene Tuna.

To add a touch of glamour, the chandelier is hung purposely low for effect. In this position rays of light dance around the walls, which were topcoated in Resene Pearl Shimmer pearlescent glaze.

The brief was met in full by the presence of all five senses.





 Resene Covert





**Colour Selection:** Philippa Hunt  
**Mural Painting:** Kevin Chow and Annie Settler  
**Painting Contractor:** Jack's Building Service  
**Photographer:** Birgit Photography  
**Colours Used:** Resene Ebony Clay, Resene Eighth Buffalo, Resene Quarter Buffalo, Resene Tuna  
**Products Used:** Resene Lustacryl, Resene Pearl Shimmer



 Resene Porsche







Black

Rock Spray

## Napier Residence



An example of 1970s architecture, this home disappeared into the neighbourhood with its neutral colour scheme. Keen to make a feature of the architecture and quality of the home, the exterior has been finished in striking Resene Black complemented by highlights and features in Resene Rock Spray. Despite some reservations from others to choose such a bold colour scheme, the finished home is often photographed and commented on by those passing by, complementing the homeowners on their confident colour selection. The Resene Rock Spray accentuates the wonderful lines of the building, ensuring that this house is memorable.

**Architectural Specifier:**  
**Architectural Drafting Associates**  
**Colour Selection:** Del Halford  
**Colours Used:** Resene Black,  
Resene Rock Spray





Seashell  
Half Tapa

The Janssen House rests on the edge of an ancient river terrace looking North out over farmland to the Tasman Sea, with Cape Foulwind to the West and coastal ranges beyond Westport to the East, in a vast sky dominated panorama.

The living accommodation of the house is a single level linear plan running along the terrace and wrapping around the two storey garage/guest suite anchoring element that dominates the entry face.

Conceptually a piece of driftwood caught on a rock at the water's edge;

its movement represented by mass flax planting to the bank.

Colours are carefully chosen to reinforce this concept and to strongly reflect the local environment while simultaneously being bold enough to stand alone.

The anchoring form, or 'rock' articulated as a climbing wall accessed from the roof terrace is painted Resene Half Tapa, a warm light grey reminiscent of the base grey tone of local granite gravels.

To contrast with this, the main body of the house was envisioned as a rich warm

burnt orange brown, a colour glimpsed in wet timber and the local iron pan layer beneath the site. A colour match to a physical piece of the iron pan was the inspiration for the orange, with the final colour being matched to a tea canister the Janssens chanced on that reflected the orange hue of the iron pan that they wanted to capture.

The finished result reinforces the architectural forms, and is a strong colour statement that sits comfortably in its environment.



# Janssen House



**Architectural Specifier:** Gordon Dalkie, Dalkie Architects  
**Building Contractor:** Janssen Construction  
**Photography:** Isaac Dalkie  
**Colours Used:** Resene Seashell, Resene Half Tapa, custom colour

 Resene Daydream



# Kaimanawa Hunt

Weekend Retreat





Cedar

Eighth  
Thorndon  
Cream

Gauntlet

Masala

Smokey  
Ash

Tamarind

Thorndon  
Cream

Designed as a weekend retreat this holiday home enjoys extensive mountain and lake views, therefore we took a little time to study nature's surroundings before creating the colour palette.

The clients' brief was to have the feeling of a chill-out luxury lodge that blended with the environment, somewhere peaceful after a hard day in nature's playground of hunting, fishing or skiing.

Resene Smokey Ash, Resene Tamarind and Resene Masala were used to blend the union of the built environment with

the natural environment. We then added Resene Cedar to add a little natural vibrancy to the soffits and extensive decking areas.

The end result was a home that blends completely into the environment changing the feel with every change in weather pattern. A house that becomes invisible when on the lake looking back. A house that is easy on the eye and its natural surroundings.

Non intrusive interior design, low profile furnishings, muted tones and textural

elements all work to reinforce the link with nature.

Resene Masala was used extensively throughout the living areas to reflect the nearby rock faces.

The master bedroom bedhead wall makes a feature of the vibrant Vision Neo wallcovering inspiring the lodge feel.

Resene Thorndon Cream and Resene Quarter Thorndon Cream were used to complete the interior and complement the natural tones throughout.





**Architectural Specifier:** Yellowfox  
[www.yellowfox.co.nz](http://www.yellowfox.co.nz)

**Building Contractor:** Blackwatch  
Construction

**Interior Designer:** Jenny Harris, Yellowfox  
**Photographer:** Len Birch

**Colours Used:** (exterior) Resene Cedar,  
Resene Eighth Thorndon Cream, Resene  
Gauntlet, Resene Masala, Resene Smokey  
Ash, Resene Tamarind, (interior) Resene  
Masala, Resene Quarter Thorndon Cream,  
Resene Thorndon Cream











Masala

Quarter  
Thorndon  
Cream

Thorndon  
Cream







## Deco Elegance

### Renovation Showhome

As the existing home had elements of the 1930s, Yellowfox felt it was important to stay true to the era and incorporate an Art Deco theme, which is evident in the colour palette. As the home is featuring many products, complementary textures and tones are used to ensure a streamlined and uncluttered look.

Treating the main surface areas with neutral colours, such as Resene Half Fossil and trims in Resene Black White, allows for a grand contrast with the dark charcoal carpet.

With entertaining a priority, integrating the kitchen with a living space was essential for a successful open plan design. Resene Half Fossil is the perfect colour to complement the timber features.

To enhance the Art Deco theme, Yellowfox has featured wallpapers in the style, one high contrast black and silver in the stairwell for maximum effect as it is a focal point from the entrance. The master bedroom has a combination

of Resene Shady Lady and a Resene WallTrends 21889 lilac wallpaper. The powder room is tiled up to dado height with a secret splash of Resene Buffalo on the walls above.

To utilise Resene specialised products, we have used the Resene Write-on Wall Paint product over the top of Resene Enamacryl Metallic Infinity on the wardrobe door in the child's bedroom, along with Resene Blackboard Paint on another wardrobe door.

The master ensuite had a painted back glass shower lining in Resene Electric to offset the pale Cararra wall tiles. All of these elements add to the elegance of this beautiful home.

With a modern palette and state of the art finishes, this old beauty has been transformed into a contemporary yet comfortable home.



Black  
White

Buffalo

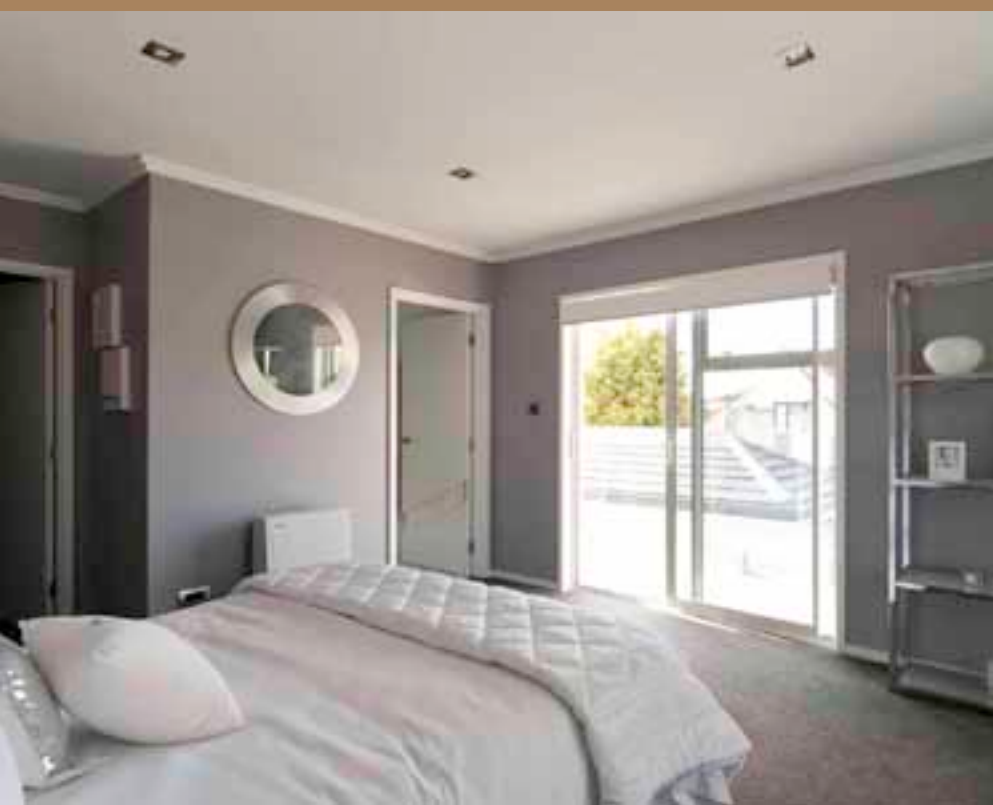
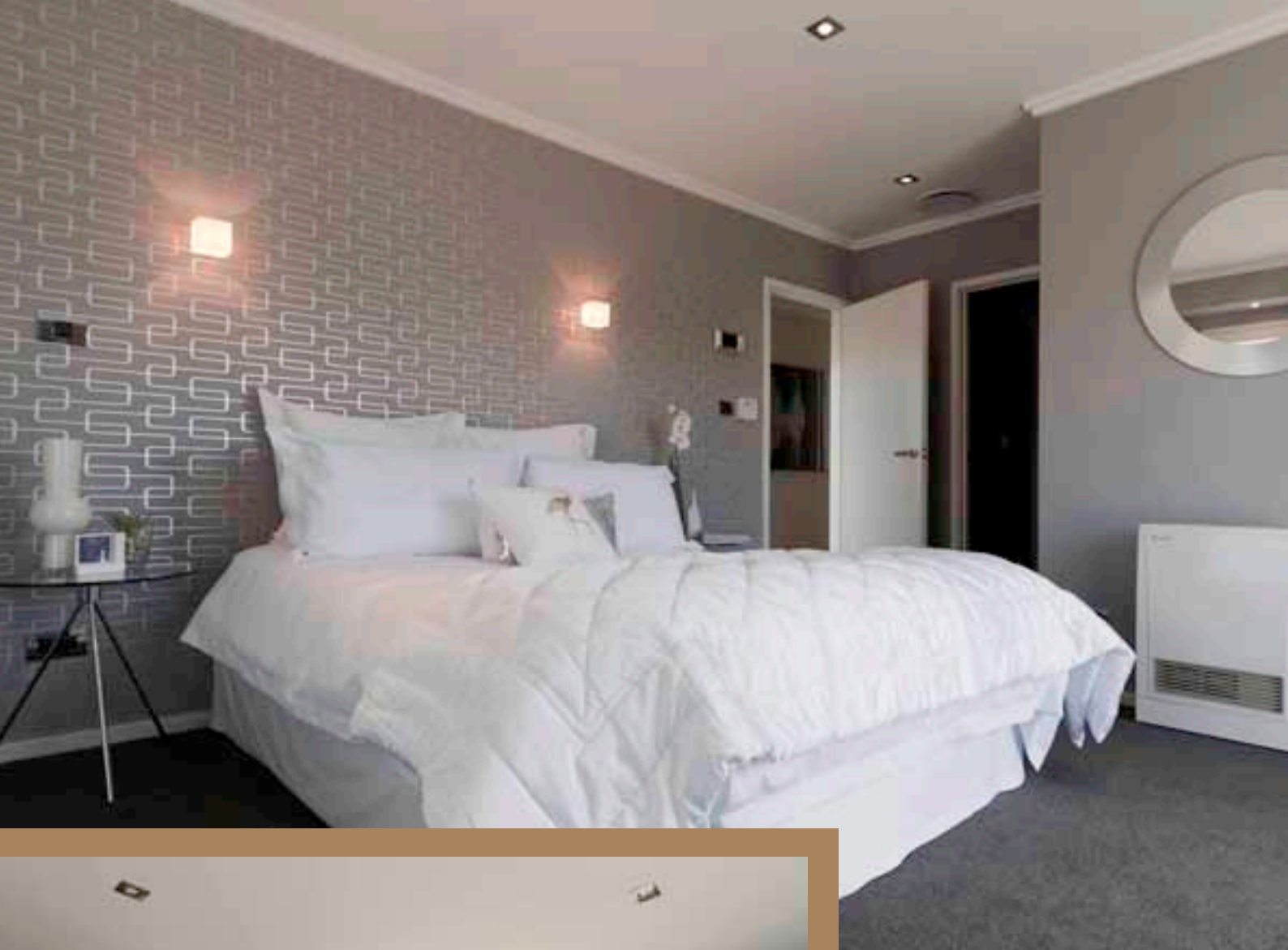
Electric


Half Fossil

Infinity

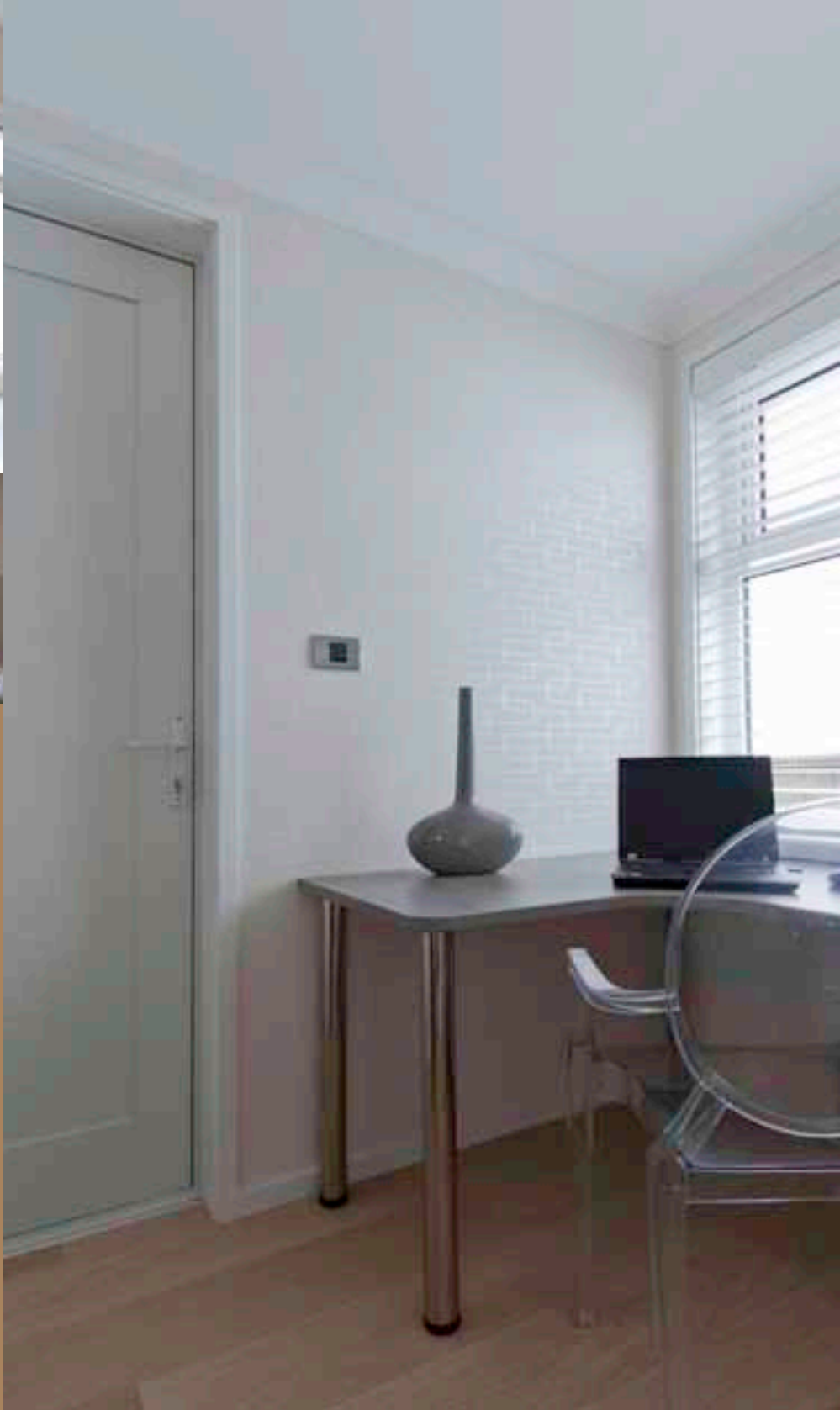
Shady Lady





 Resene Secret Road





**Architectural Specifier: Yellowfox**  
[www.yellowfox.co.nz](http://www.yellowfox.co.nz)

**Building Contractor:**  
Certified Renovations

**Homestaging: Homebase**

**Products Used: Resene Blackboard Paint, Resene Enamacryl Metallic, Resene Lustacryl, Resene SpaceCote Low Sheen, Resene Write-on Wall Paint, Resene Zylone Sheen**

**Colours Used: Resene Black White, Resene Buffalo, Resene Electric, Resene Half Fossil, Resene Infinity, Resene Shady Lady**







## Contemporary New Build

### Dare to Be Different

The client was building a large contemporary house in Remuera. With clean lines and a series of box formations, the exterior finishes and colours were to be simple, uncluttered and make a statement.

The interior had polished concrete flooring, with fantastic indoor-outdoor connection. A circular floating staircase connected the three levels of the house, and was viewable from all areas and creating a major focal point.

The building would house a grand sweeping entrance, six bedrooms, six bathrooms, a pool living room with a bar area, a large living area which incorporated a seating, dining and kitchen and scullery. The ability to entertain and gather with friends was a key element to consider. There was also a media room, gymnasium, large garaging spaces. An area was future proofed to incorporate a lift at a later date. All these areas required cabinetry designs, as well as concepts, finishes and colours specified.

The client wanted a very modern interior, to incorporate a neutral palette with splashes of bold colour. This house was to make a strong statement, and to dare to be different.

The inspiration for the scheme was the use of the colour orange as an accent. The colour is uplifting and creates energy. It is also said to aid communication, of which entertaining and gathering with friends was a major component of the brief.

With the concrete floors on the first two levels, a major consideration was also given to acoustics. A large 10 metre high by five metre wide curved wall that wrapped around the circular staircase was panelled in fully upholstered metallic vinyl fabric. The stairwell, bedrooms and top level were carpeted in a Shaggy nylon carpet, which softened the acoustics as well. Splashes of orange are seen in the hanging pendant lights and the circular artwork which echoes the staircase shape and form.

A central living area is the Pool room. It connects through to the kitchen, dining and family seating, but has the ability to be separated off by large sliding doors. A neutral palette was used throughout the main areas of the house, Resene Albescent White, which created an open airy feel particularly in the daytime. At night, this colour took on the warmth of the lighting and created a cosy feeling. A bar area was designed, and the cabinetry painted in Resene Milk White. This was set against a feature wall painted in metallic Resene Catch 22, continuing the Resene Fuscous Grey and Resene Double White Pointer theme the exterior was painted in.

Orange accents throughout the house were based on Resene Clockwork Orange. This was used to create a paint effect on the Fireplace walls that would emulate the metallic tiles on the back of the breakfast bar. The colour was also used in other finishes and mediums to bring splashes of bold colour into the house and make a statement.

Albescent White

Catch 22

Clockwork Orange

Double White Pointer

Fuscous Grey

Milk White





The main areas were designed with dare to be different in mind. French vinyl feature wallcoverings created a wow factor statement. The media room was designed with a quirky retro feature wallcovering that made a powerful statement. Against the Resene Albescent White, the pattern and colour created a retro element, the client had also purchased a life size Batman made from mechanical car parts to add to the quirky feel.

The guest powder room features a textured vinyl wallpaper showing a city at night scene, oranges and mustards taking a centre stage.

The master bedroom was painted in Resene Milk White, as this teamed with the white in the bathroom tiles. The ensuite and the sleeping area were only slightly separated

by the bedhead. The feature wall being a mosaic tiles wall behind the bath, which brought the oranges into coppery hues to create a level of sophistication.

The remaining bathrooms and ensuites continued the Marquina Black granite tiles that were a feature of every bathroom, and each bathroom had an accent colour, with different mosaics, each with Resene Albescent White to provide the striking contrast colour scheme.

.Resene Clockwork Orange was the base shade in the main guest bedroom against the simplicity of the white and charcoal base.

The end result was a house that was very bold, held an element of surprise within the different spaces and really did 'Dare to Be Different'.







☐ Resene Dark Slate



**Colour Selection and Interior Design:**  
Amanda Neill, Designworx  
**Building Contractor:** Tim Wenweili

**Colours Used:** Resene Albescent White,  
Resene Catch 22, Resene Clockwork  
Orange, Resene Double White Pointer,  
Resene Fuscous Grey, Resene Milk White





Black  
White

Double  
Napa

Double  
Tea

Quarter  
Ash

## Goodall Apartment

### Light and Shade

The brief for this apartment refurbishment was to redefine the existing spaces, to bring a feeling of light into the dining/kitchen/sitting area. The entry, gallery and lounge areas that connect to this space were all to be repainted. The new blonded oak timber flooring would link all these areas.

The client owned furniture and art from a previously owned Villa, which allowed an eclectic mix of style and added interest and layers to this new scheme. Resene Black White was used to define the new Poggenpohl kitchen, with its mix of burnt orange and blonded timber cabinetry with polished black benchtop. Resene Quarter Ash softened this effect in the dining/sitting area, and sun floods in here making the new window seat a

welcome place to take 'time-out'. The soft furnishings in this area match our colour palette of Resene Quarter Ash, Resene Half Friar Grey and Resene Double Tea.

The gallery space is an internal space with diffused light from an overhead skylight. The bold hue of Resene Double Napa adds warmth and depth to this space, and acts as a backdrop to antique furniture and art collected by the client over many years.

The entry to this apartment is via a lift that opens into an entry lobby painted in Resene Double Tea. From this area you catch a glimpse through the gallery to the sitting area where the afternoon sun floods in, and you are drawn through the space to the light.







**Colour Selection and Interior Designer:**  
Tricia Dunlop, Spatial Integrity Ltd  
**Architectural Specifier:** Robin O'Donnell  
Architects

**Colours Used:** Resene Black White,  
Resene Double Napa, Resene Double Tea,  
Resene Quarter Ash

**Products Used:** Resene Ceiling Paint,  
Resene SpaceCote Flat, Resene  
SpaceCote Flat Fly Deterrent,  
Resene SpaceCote Low Sheen





Resene Flashback







## Spare Room Revamp

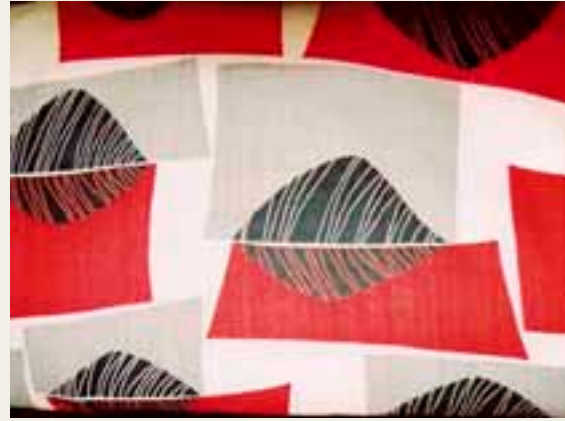
This project was inspired by the colour red, by the family requirement for a spare lounge space and by an enjoyable 20 year association with Resene. Resene Jalapeno has been chosen because it combines the best vibrant magenta/scarlet and warm orange elements of a red.


Red velvet dress fabric was used for the curtains accessorised with 12 possum pelts hand stitched into a curtain (with tails intact) giving a humorous local flavour to the interior. Vintage 50s fabric

provides a cover for the base of the TV.

Furniture consists of a simple cream modern armchair, an heirloom 50s coffee table built in the 1950s, wall storage and bookshelves.

A David Trubridge 'Swirl' light hangs from the ceiling. A white Italian Perspex free stand lamp and a 50s lamp with customised lampshade complement the existing light fittings. The effect of the light on the three Resene Jalapeno walls and wood panelling is magically cosy.



 Resene Alabaster

**Colour selection: Rachel Ovens**

**Colour Used: Resene Jalapeno**

**Product Used: Resene Lumbersider**

Corinth Residence  
Auckland



Resene Total Colour Residential Interior Award







The existing house was constructed c.1963, designed by the celebrated modernist architect Vladimir Cacala. Published in an issue of the international journal *Architectural Review*, it is a fine example of modernist domestic architecture in Auckland. This house is in fairly original condition and retains many of the specific details that distinguish this house as worthy of respect. The present owners are well aware of the cultural and historic value of this house and are dedicated to retaining the integrity of the original design.

Our design intention has been to provide modern living necessities while disturbing the existing house as little as possible.

The new additions are to the east of the existing house minimally disturbing the existing concrete block wall and stepping back to retain the overall proportional integrity of the existing house.

The aim was to disturb the interior and exterior of the existing house as little as possible with the exception of the kitchen, which was moved to allow this larger space to be used as a versatile second living room/games room space that could double as an office studio.



Flame Red

French Grey

Gallery White

Ship Grey



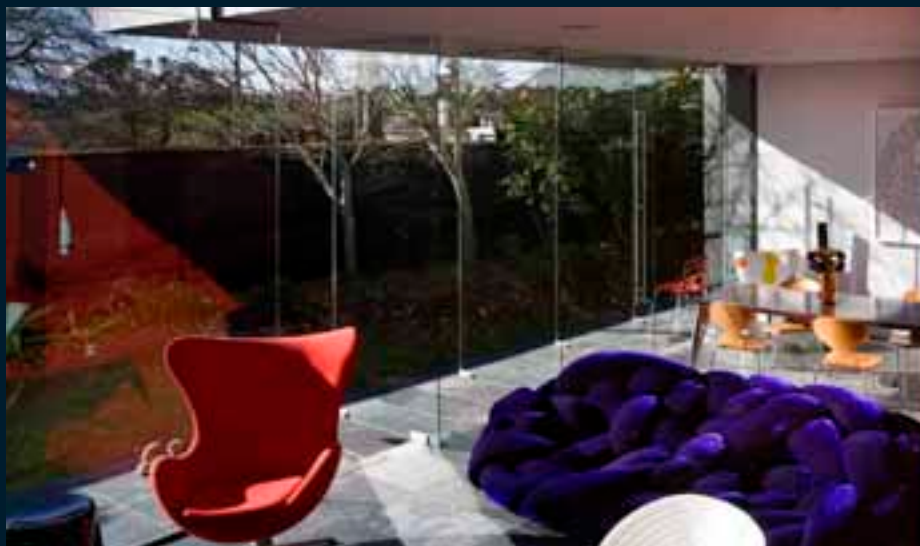


**Architectural Specifier: Daniel Marshall Architects**  
[www.marshall-architect.co.nz](http://www.marshall-architect.co.nz)

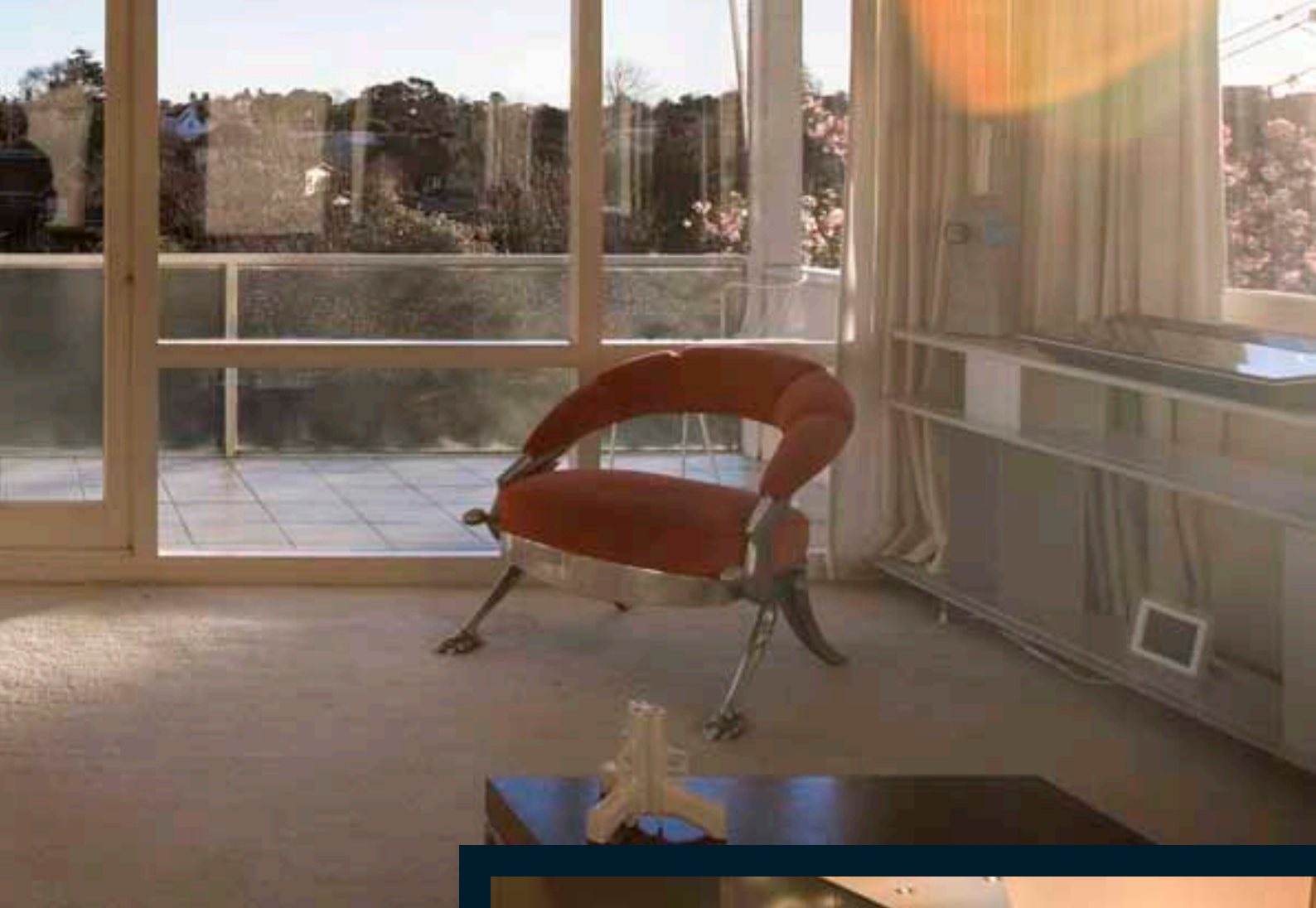
**Building and Painting Contractor:**  
Grace Brothers, Gracewood Construction

**Colours Used: Resene Flame Red, Resene French Grey, Resene Gallery White, Resene Ship Grey**









Waikopua  
Waiheke Island





Black  
White

Hackett  
Black

A stand of Nikau, an idyllic private bay and a building platform defined by ridges either side set the architectural program of the design of this family beach house on Waiheke Island.

The concept evolved from the idea of a family group camping, creating space between the functional nodes. This was particularly important in allowing space for the boats and water to move through the valley to the bay below. This space was utilised to give physical separation to the guest house as well as a garage.

The materials and form were chosen to be empathetic to the landscape and

fauna. The house is designed to integrate into the landscape – the stone walls were sourced locally, the windows are tinted to limit reflection and the timber upper level stained dark to blend into the bush behind. It has been said that the colour of the New Zealand native bush is black.

It was important to activate the spaces around the house giving a progression to enjoy. From the lawn overlooking the sea soaking up the morning light, to the private courtyard, framed by the Nikau grove, catching the last rays in the evening while enjoying the outdoor fire.







Resene Rocky Road

Architectural Specifier: Daniel Marshall Architects  
[www.marshall-architect.co.nz](http://www.marshall-architect.co.nz)

Colours Used: Resene Black White, Hackett Black





Black  
White

## Korora

### Waiheke Island

A ridge stretching between Auckland's Hauraki Gulf and the pastoral landscape of Waiheke Island provided a stunning, and challenging, context in which to design a home.

The approach was to work within the contour of the ridge, as an attempt to minimise the impact on the landscape. A landscape wall, clad in local coloured stone, splays out from the primary plan form, providing a point of entry to the house, and allowing the excavation that drops the garage below the ground line.

Ascending the stair, one reaches the house via a southern courtyard. The plan form of the house is spaced between this courtyard and its accompanying northern courtyard, which are bridged by a gabled

roof stretched across the long axis. The courtyards provide the opportunity to shelter from either of the two dominant winds.

The materiality of the house draws on two architectural conditions of Waiheke, the masonry forms were inspired by the gun emplacements of Stoney Batter. The use of cedar and plywood reflect precarious weekenders of the island's past.

The clients are returning to live in New Zealand after a long period in Asia. The Resene Black White walls complement the full material palette of the house. The natural timber tones and textures of the stone walls and tiles reflect a warmth onto the walls - a composition and atmosphere ideally suited to comfortable living.




Architectural Specifier: Daniel Marshall Architects  
www.marshall-architect.co.nz

Building Contractor: Mike Keaney  
Photographer: Daniel Marshall Architects and Patrick Reynolds  
Colours Used: Resene Black White



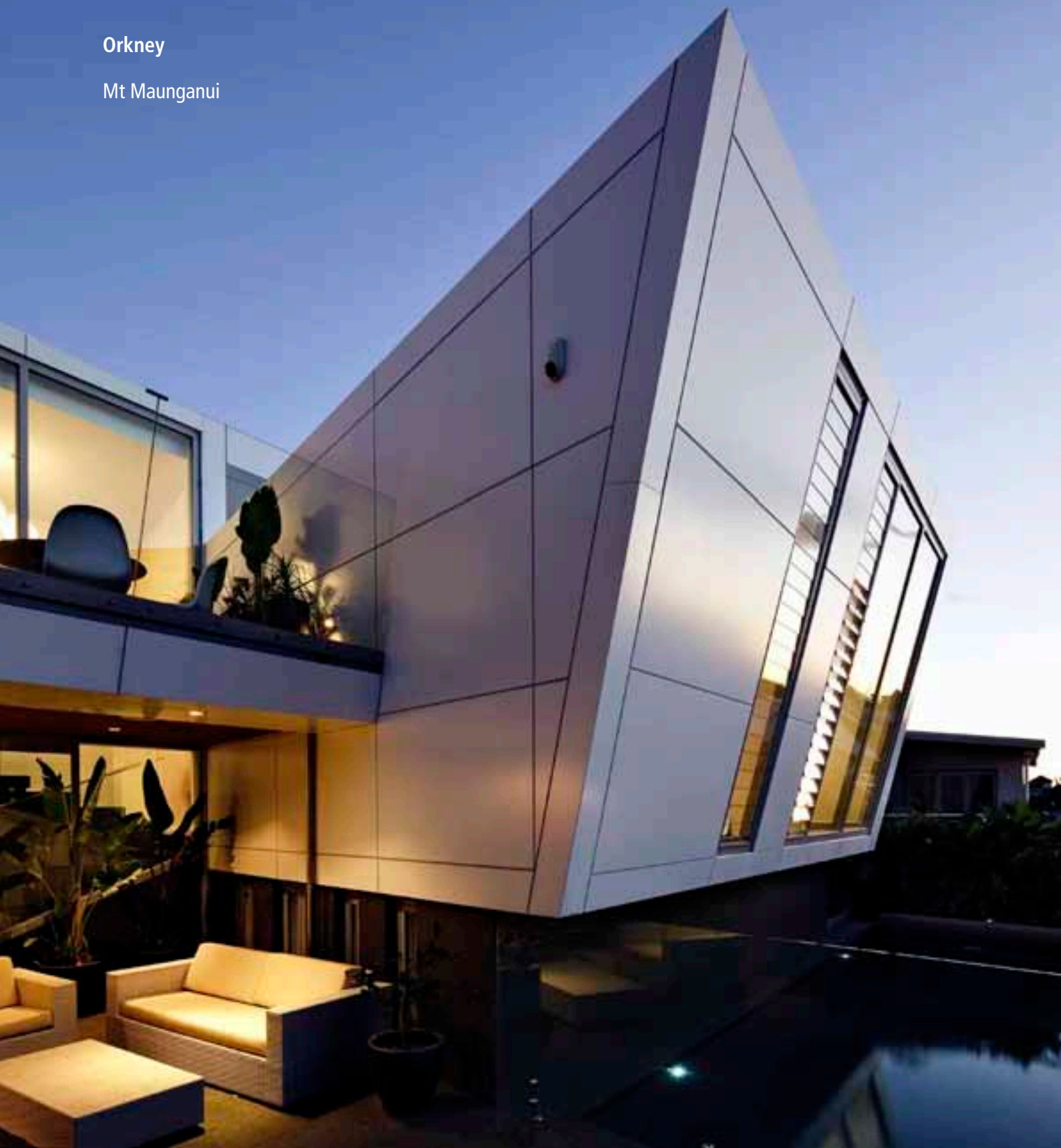


 Resene Double Ash



Orkney

Mt Maunganui





A densely suburban area in Mount Maunganui presented a section with a sharp two metre drop mid-site. This ground condition led to four separate half levels housed within two distinct sculptural forms. At their fulcrum, two levels of outdoor living space provide separation of shared and private spaces zoned within the two respective forms to frame the outdoor spaces and providing a connection between the two forms, a generous stairway.

The Eastern form houses the garage/entry below and shared spaces above. The Western form accommodates the private

spaces. At ground level - the entry, garage door and adjoining walls are 'flush-clad' in horizontal stained cedar weatherboards. This creates a moment of secrecy as to discovering the means of entering the home.

After passing through the entry door, the visitor is immediately disengaged with the imminent suburban context as they move into the foyer and lower courtyard, well hidden from the entry/driveway.

Manipulation of privacy was a key driver in the development of the project resulting in areas that, while cannot be

thought of as strictly private, place the occupier in a position of dominance. This is especially notable in the living area that overlooks the public beach access walkway.

From the entry/driveway, the clean white angular forms evoke the prows of two ocean vessels vying for the attention of the 'Mount'.

Strong splashes of bright colour are used against a background of white painted walls, while black concrete stairs and timber combine to complete the house.









Architectural Specifier:  
Daniel Marshall Architects  
[www.marshall-architect.co.nz](http://www.marshall-architect.co.nz)  
Building Contractor: Mike Keaney  
Photographer: Daniel Marshall Architects  
and Patrick Reynolds  
Colours Used: Resene Black White

Black  
White





## Auckland Residence

This new house is set on a long, narrow suburban Auckland site with glimpses of the sea. By colouring the exterior of the house, Resene Waterborne Woodsman CoolColour™ Pitch Black, the dwelling could sit quietly, inserted into its rather eclectic neighbouring collection of houses. The exterior concept was to create a long, elegant black house with cut-away courtyards, both to the East and to the West, which would reveal a soft and nourishing, light green, Resene Poprock.

A strong rhythm of black pilasters at the entry in Resene Pitch Black draws one along the boardwalk and towards

the front door which is vibrant, bright and inviting, in Resene Pulse, which was chosen to create a vivid contrast to all the black, and a warm, cheerful welcome.

Colour is used in the interior of this new house to help to emphasise the qualities of warmth and elegance. Colour is also used as a motivator to encourage movement through the house from the entry, right through the house to the living pavilion at the rear.

At the entry, the foyer and stairwell features a double-height weatherboard wall in Resene Pitch Black, which brings the exterior entry wall through to the



interior and helps to draw you down to the main living level. Moving down the stairs one gets glimpses of the fresh green, Resene Poprock, of the courtyards as we journey through the house which then opens into the main pavilion at the rear.

In conjunction with the generous use of Tasmanian Oak, the walls and ceilings of the main living areas use Resene Black White as well as the lacquered kitchen cabinetry, which are punctuated with timber paneling, black granite, and duck-egg blue-backed glass – Resene Carefree.



**Architectural Specifier:**  
Architecture Smith + Scully Ltd  
[www.smith-scully.com](http://www.smith-scully.com)

**Building Contractor:**  
Priority One Construction

**Colour selection:** Carolyn Smith  
and Kristan Deed

**Painting Contractor:**  
Prime Paint and Plaster

**Cabinetry:** R H Cabinetmakers

**Photographer:** Patrick Reynolds  
and Architecture Smith + Scully

**Colours Used:** Resene Ashanti,  
Resene Black White, Resene  
Carefree, Resene Pitch Black,  
Resene Poprock, Resene Pulse,  
Resene Soho





Ashanti

Black  
White

Carefree

Pitch Black

Poprock

Pulse

Soho














 Resene Hillary



**Wellington Residence**

Oriental Parade





Wasabi



Resene Wasabi

The realisation of the new house on Oriental Parade was a long journey that started when eight architectural practices were approached by the clients. Over a period of months and a series of interviews, Accent and one other architectural firm emerged as the preferred architects to undertake the project, and were each asked to produce a concept design scheme for the site.

The Accent scheme was chosen not only because it articulated the client's brief for a traditional style, but went further by making some direct design references to both the local built environment and to Oriental Bay beach itself. According to the clients "Accent Architects understood our desire for a home that was sympathetic with the traditional houses in the Bay but with a modern appearance". One

such example was that the design team observed that the nearby beach is regularly groomed and this produced a sensuous banding pattern. The effect was picked up on and the banding effect woven into the house's concrete, brick and zinc cladding.

Red brick was used as a nod to the nearby classic brick residences, while the charcoal coloured zinc provides a modern interpretation of the solid plaster treatment that traditionally accompanies brickwork. The front door was painted in Resene Wasabi green to accentuate the residence's entry and provide a complementary splash of colour that highlights the design intent of a classical home with many modern twists. Resene paints were also used throughout the interior.



**Architectural Specifier:** Gina Jones, Accent Architects  
[www.accentarch.co.nz](http://www.accentarch.co.nz)

**Building Contractor:** LT McGuiness  
**Painting Contractor:** A & D Decorators  
**Photographer:** James Gilberd, Photospace Studio





## Couldrey House

Wenderholm Regional Park



This large home dating from 1857 sits within the Wenderholm Regional Park and is open for public viewing.

Its original owner was a local farmer and businessman, Robert Graham, but it has since had a succession of owners and as many alterations in response to their various requirements. The result is a two storeyed, nine bedroom home of disparate and sprawling form with a number of different architectural periods and 'features' represented but a largely Victorian-Edwardian style predominant.

The majority of renovation and restoration work occurred during its ownership by the Couldrey family, whose name it still bears. Consequently a Conservation Plan prepared for the house in 2001 recommended that the Couldrey period (1957-73) should be the reference point for any further efforts to preserve its 'authenticity'.

A catalyst for updating the colour scheme in 2010 was the need to replace the

roofing with a pre-coated maximum durability product appropriate for coastal environments. The roof colour selection was therefore pivotal to the final colour scheme chosen for the house and its outbuildings.

Coloured photographs of the house taken at conclusion of the Couldrey renovations and supported by paint scrapings collected from various locations, indicated that the house had been a grey/blue colour with white trim and a light or white roof – Colours that referenced the sea and the sky and gave the house a certain 'Cape Cod' seaside feeling.

A further factor Salmond Reed considered in formulating colour selections was the unique siting of the house. Surrounded by a tranquil colonial garden, backed by bush-clad hills and facing towards a sandy beach and seascape, this sensitive environment demanded a sensitive response in terms of colour selection so that the house would neither dominate nor be overwhelmed by its surroundings.

With the above in mind we began by choosing Colorcote Gull Grey for the roof. This selection acknowledged the light roof colour used by the Couldreys but softened and darkened it to sit more comfortably into the dominant bush backdrop. This roof colour formed the springboard for the remaining colour choices. The blue palette of the Couldrey era was referenced but again we opted to soften and 'green' the colouration so that it would sit more comfortably into the rural, coastal surrounds.

Resene Destiny was chosen for the weatherboards and contrasted with Resene Half Colonial White, Resene Alabaster and Resene Zombie on the various timber joinery elements. The verandah floor was finished with Resene Waterborne Sidewalk Amber Grey paint and the base of the house and the chimneys were painted with Resene Tapa.

This combination has achieved a sensitive and successful enhancement of this substantial and significant historic home.





Alabaster

Amber  
Grey

Destiny

Half  
Colonial  
White

Tapa

Zombie



**Colour Selection:** Anne Shanks,  
Salmond Reed Architects  
[www.salmondreed.co.nz](http://www.salmondreed.co.nz)

**Project Director:** Bruce Petry, Salmond  
Reed Architects

**Painting Contractor:** Platinum Painters

**Photographer:** Lloyd Macomber, Salmon  
Reed Architects

**Colours Used:** Resene Alabaster,  
Resene Amber Grey, Resene Destiny,  
Resene Half Colonial White, Resene Tapa,  
Resene Zombie

**Products Used:** Resene Hi-Glo, Resene  
Super Gloss, Resene Waterborne Sidewalk





## The Bourke House

Buckleton Beach

### Brief

A modern weekend family retreat to eventually become the family home; to replace the cottage; and complement the new guesthouse and boatshed

### Site conditions

The site is an exposed, sensitive, rural/coastal environment above Buckleton Beach; a prominent peninsular with spectacular views

### Concept

The original family summer cottage relocated to next door made way for a new 'campsite' – conceptual 'tents', formed as connected pavilions. Inspired by; and embodying intergenerational memories – the essence of long

summer holidays, activities, collections, connections and stories

### Planning outcomes

A family retreat, created to both experience (and be protected from) the elements and nature, providing a sustainable fulfilling lifestyle, maximising sea-views.

The pavilions are linked, forming a protective backing to the central space – the 'campsite heart' – as a gathering space, providing comfort, protection and connection with the land and activities.

The main pavilion invites relaxation and nourishment, raised to acquaint with the coastal islands. Adjacent is the protective sleeping pavilion being adaptable

for experiencing the ambience of the campsite and outlook; or being closed off for privacy.

### The form

Aotearoa, 'the land of the long white cloud' is reflected in horizontal roof forms gently lifting in flight, lightly skimming the land, masts tensioning the wings.

### Materials

Sliding glass doors enhance the spaces for opening up, experiencing, connecting. There's no holding back, just feeling what is – sea breezes, reflections and sea-change personalities, moonlight and sun; while being secure from storms.

Neutral interior colour provides an inviting backdrop, native timbers salvaged



Burgundy

Half Linen

Seashell

from the seashore, eclectic collections personalising and connecting to the heart.

Splashes of red – from the pohutukawa tree – represents the Christmas flower of joy and celebration – a client favourite. Polished concrete aggregates, texture and patterning – contrasting, solidity and enduring.

#### Natural energies

At one with Mother Nature, utilising her energies for cooling, heating, utilising solar hot-water, rainwater-recycling – for nourishing, refreshing, honouring the earth.

Originally briefed as a weekend retreat, the energy of the home has enticed the owners to move in permanently. Happy holidays!





Architectural Specifier: Pete Eising and Lucy Gauntlet, Pacific Environments NZ Ltd:  
[www.pacificenvironments.org.nz](http://www.pacificenvironments.org.nz)  
 Building Contractor: LBG Builders  
 Painting Contractor: Pilkington Interiors Ltd

Photographer: Lucy Gauntlet  
 Colours Used: Resene Burgundy, Resene Half Linen, Resene Seashell  
 Products Used: Resene Ceiling Paint, Resene Lustacryl, Resene SpaceCote Low Sheen, Resene Uracryl







**Hill Residence**  
Auckland



Rebuilding this 1960s solid masonry home took 20 months. The rebuild proved a challenge as it had been poorly built originally and major reconstruction was required. The brief from the new owners was to maintain character but to enhance the home with a modern high end finish. A classic, elegant look was requested with a neutral, timeless colour palette.

The cue for colour is taken from the strong architectural lines of the house and the coastal location on the Bucklands Beach peninsula. Ensuring the house doesn't compete with its environment emphasis was placed on the use of texture and shadows rather than applied colour.

Opting for an unconventional finish of smooth solid plaster on interior walls keeps the house honest to its masonry construction. The main exterior colour selected is Resene Half Thorndon Cream, therefore using Resene Quarter Thorndon Cream inside ensured the solid nature of the walls are emphasised.

Accent colours are added with oak cabinetry in bathrooms and kitchen. Keeping the oak honest to its natural colour a light stain is applied complementing warm colours from the natural limestone tiles.

Emphasis on texture is again highlighted in the kitchen, with a high gloss finish

of Resene Quarter Thorndon Cream on kitchen cabinets contrasting with the matt textured walls and the soft accent of the oak cabinets.

The subtle introduction of wallpaper (Resene GLAM 724 776) applied inside wardrobes and cupboards, gives a soft, luxury feel, a reminder of days gone by when luxury leather travel trunks were lined with beautiful wallpapers.

At the entry to the house a cedar front door has been stained with Resene Iroko, providing a soft contrast to the Resene Thorndon Cream both inside and out, thus the front door stands out providing a warm welcome to this now luxury home.



Alabaster

Double Pravda

Iroko

Mondo

Quarter Friar Grey

Quarter Thorndon Cream

Triple Friar Grey





**Architectural Specifier:**  
Dawson Architectural Ltd  
**Building Contractor:** Stuart Clark of Black and White Renovations  
**Interior Designer:** Sharon Dann, Design Council Interiors Ltd  
[www.dci.co.nz](http://www.dci.co.nz)  
**Painting Contractor:** Allied Painters and The Painters and Decorators  
**Photographer:** Alicia Dann,

**Design Council Interiors Ltd**  
**Colours Used:** Resene Alabaster, Resene Double Pravda, Resene Iroko, Resene Mondo, Resene Quarter Friar Grey, Resene Quarter Thorndon Cream, Resene Triple Friar Grey. Resene CoolColour™ technology used for all exterior dark colours.





Resene Quarter Thorndon Cream





## Rangiora Residence

This project began early in 2010 with the purchase of land, followed by much sketching of plans and thinking about colours, textures, shapes and size. A key focus was to go beyond the safety of neutral colours and create a colour palette that was different without being too bold and overpowering.

Inspired by beautiful colour combinations and a desire to create an atmosphere and environment that is glamorous, yet homely, cozy and inviting, Resene Warrior blue was used for the open plan living

area to bring a great colour to the room that would complement the kitchen and furnishings and look amazing with gold. Resene Quarter Tea was used as the main wall colour with Resene Eighth Spanish White on the ceilings, doors and trims as they work nicely with the other colours in this home's palette.

In my formal lounge, Resene Half Oilskin adorns the walls, an earthy colour that works well with the riverstone fireplace and imparts a warm natural feel to the room.

The master balance is a careful gender balance with very feminine curtains balanced with simple masculine wallpaper.

The baby's room has a new dado rail feature grounded with Resene Geronimo, which complements the bedding and accessories.

The complete makeover draws on a range of colours to create interest and to fit with the family that happily resides within.



☐ Resene Earthstone



Eighth Spanish White

Geronimo

Half Oilskin

Quarter Tea

Smalt Blue

Warrior



Resene Earthstone







**Colour Selection:** Serena Joli  
**Draftsperson:** Jeremy Harrison  
**Building Contractor:** Steve Bret  
**Painting Contractor:** 'A New Haven' Decorators  
**Colours Used:** Resene Eighth Spanish White,  
 Resene Geronimo, Resene Half Oilskin,  
 Resene Quarter Tea, Resene Smalt Blue,  
 Resene Warrior







Amethyst Smoke
Apache
Beatnik
Belladonna
Black
Broom
Copper Fire
Curious Blue
Double Putty
Espirit
Fire
Gold Dust
Gorse
Homegrown
Keppel
Limerick
Moxie
Port Gore
Pursuit

## Wooden Toys

The brief is to improve on earlier toy designs while preserving the same principles. Fundamentally these can be reduced to two major outcomes - first to make toys as robust and colourful as possible, and second to make them the fastest freewheeling wooden toys in New Zealand. Resene paints are used for their sheer convenience in purchase, consistence of reproduction, simplicity in use and satisfaction of the environmentally-friendly clean-up.

A toymaker's first inclination is often to make anthropomorphic toys, that is, to personalise them or emulate little animals. Some very successful examples exist in model railway toys and others within that genre. There are downsides to this concept:

- a) Some imported animated toys can be grotesque and off-putting to small children who, despite parental preferences, are the ultimate customer.
- b) Marketing of vaguely similar products will only favour dominant toy

sellers who will in all probability be large multinationals.

c) Children tend to rapidly outgrow anthropomorphic toys. Small boys very soon consider all toys with faces to be very childish indeed.

The paramount features of these wooden toys are they must:

- a) Be suitable for children from 2-9.
- b) Use a non-toxic water-based paint system.
- c) Produce a very sturdy wooden body, mindful of weight.
- d) Use strong irremovable recycled neoprene ball-bearing wheels.
- e) Use steel axles with glued and recessed nuts, and recessed bolts heads.
- f) Have no removable parts.
- g) Have vinyl labels with the highest achievable standard of adhesive.

### Colour Selection and Design: G Tim Nicol

**Colours Used:** Resene Amethyst Smoke, Resene Apache, Resene Beatnik, Resene Belladonna, Resene Black, Resene Broom, Resene Copper Fire, Resene Curious Blue, Resene Double Putty, Resene Espirit, Resene Fire, Resene Gold Dust, Resene Gorse, Resene Homegrown, Resene Keppel, Resene Limerick, Resene Moxie, Resene Port Gore, Resene Pukeko, Resene Pursuit, Resene Red Hot, Resene Sensual Red, Resene Studio, Resene Taffeta, Resene Time Warp, Resene Trinidad, Resene Wet N Wild, Resene White Thunder

**Products Used:** Resene Aquaclear, Resene Enamacryl Metallic, Resene Lumbersider, Resene Lustacryl, Resene Waterborne Smooth Surface Sealer, Resene Zylone Sheen





**1800 738 383**  
**[www.resene.com.au](http://www.resene.com.au)**

**0800 RESENE (737 363)**  
**[www.resene.co.nz](http://www.resene.co.nz)**

**[www.resene.com/colourawards](http://www.resene.com/colourawards)**