

★★★ Difficulty level ★ easy ★★ moderate ★★★ challenging

Ways with wood  
with Mark Rayner – 27

It's easy to create this simple timber planter using fence palings and Resene Woodsman penetrating wood stain.

### You will need:

- 150mm x 25mm treated fence palings cut to the following lengths:
  - 1200mm (x 6)
  - 365mm (x 4)
  - 200mm (x 4)
  - 52mm x 52mm x 190mm right angle nail plate (x 4)
- 50mm galvanised jolt head nails
- 25mm galvanised flat head nails
- Circular saw
- Drill with large drill bit
- Hammer
- Paintbrush
- Pencil
- PVA glue (exterior)
- Resene Woodsman solventborne penetrating oil stain tinted to Resene Totem Pole
- Sandpaper
- Tape measure
- Turps for washing brush



#### Step one

Measure and cut the timber to the dimensions as listed above, and smooth any rough edges with sandpaper.



#### Step two

Attach two of the 1200mm lengths to two of the 365mm lengths, forming an elongated rectangle, as shown. Fix at each corner with PVA glue and 50mm nails.



#### Step three

Repeat step two to form a second rectangle, as shown.



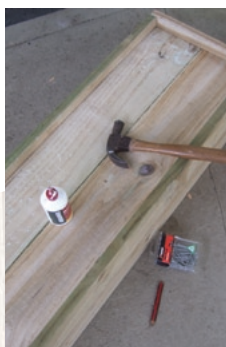
#### Step four

Reinforce each corner using the right angle nail plates and 25mm nails, as shown.



#### Step five

Using the PVA glue and 50mm nails, attach a 200mm piece of timber along the centre of each inner side, approximately 60mm from the bottom edge, as shown.



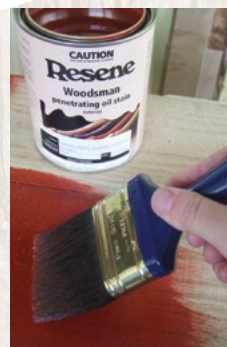
#### Step six

Turn the planter upside down and fit the remaining two lengths of timber to form the base, as shown. Fix into place with PVA glue and 50mm nails.



#### Step seven

Drill six large drainage holes in the bottom, as shown.



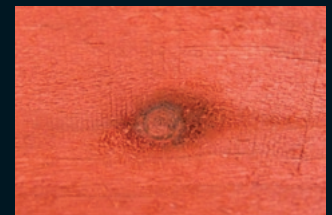
#### Step eight

Apply two coats of Resene Totem Pole to the entire planter, allowing 24 hours for each coat to dry.



### To get the look:

Mark painted the background house wall with Resene Lumbersider tinted to Resene Pale Prim and planted up the planter with a selection of hot-coloured marigolds.



### Other ideas:

For a cool black finish try Resene Woodsman penetrating oil stain tinted to Resene Pitch Black.

For more ideas and inspiration visit your local Resene ColorShop or the Resene website.