

# GET UP ON THIS

These It shades have really got us talking and we can't help but think you're going to love them too. There's a look for every aesthetic – what's your jam?

STYLING  
**Juliette Wanty**

PHOTOGRAPHY  
**Wendy Fenwick**

**BACKDROP Walls and floor** in Resene Just Right, [resene.co.nz](http://resene.co.nz). **OPPOSITE Plinth** in Resene Sandtex Standard tinted to Resene Swirl, [resene.co.nz](http://resene.co.nz). **Amethyst bowl**, \$120; **Curvature vase** by Rachel Saunders, \$220, [fourth-st.com](http://fourth-st.com). **Ceramic bowl** by Ellen J Hemmings, \$35, [widdess.co.nz](http://widdess.co.nz). **RIGHT Plinths** (from left) in Resene Thor, Resene Aloha and Resene Tacao, [resene.co.nz](http://resene.co.nz).



## DESERT MENU

Take the rough with the smooth to create a perfectly imperfect melting pot of texture, warm neutrals and rust with a hint of laid-back '70s glam.



Resene Scoria



Resene Desperado



Resene Just Right

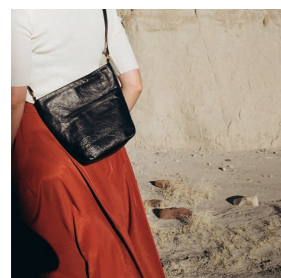


Resene Swirl



Resene Sandtex Standard

**MOODBOARD, LEFT** Walls and floor in Resene Just Right; **plinths** (left) in Resene Sandtex Standard tinted to Resene Swirl and (right) Resene Desperado with Resene Paint Effects Medium mixed with Resene Scoria, [resene.co.nz](http://resene.co.nz). **Arc vase** by Rachel Saunders, \$320, [fourth-st.com](http://fourth-st.com). **Vessel** by Adrian Bird, \$28, [bioattic.co.nz](http://bioattic.co.nz). **INTERIOR LOOK, OPPOSITE** Floor in Resene Walk-on in Resene Just Right; **walls** (left) in Resene Desperado Lumbersider with Resene Paint Effects Medium mixed with Resene Scoria and (rear) Resene Sandtex Standard tinted to Resene Swirl, [resene.co.nz](http://resene.co.nz). **FROM LEFT** **Mayu lamp** by Coco Flip, \$2490, [theyivyhouse.co.nz](http://theyivyhouse.co.nz). **Dracena plant** in Bianca **pot**, \$169, [plantandpot.nz](http://plantandpot.nz). **Form Study No 2 art print** by Samantha Totty, \$489, [endemicworld.com](http://endemicworld.com). **Hugo sofa**, \$2695, [meandmytrend.com](http://meandmytrend.com). **Marl cushion cover**, \$70, [cittadesign.com](http://cittadesign.com). **Globe cushion** by Klay, \$160, [precinct35.co.nz](http://precinct35.co.nz). **Ghan Berber Knot rug** by Armadillo & Co, \$1880, [theyivyhouse.co.nz](http://theyivyhouse.co.nz). **Radial coffee table**, \$990, [cittadesign.com](http://cittadesign.com). **Large platter**, \$174, [gidonbingceramics.com](http://gidonbingceramics.com). **Vessel** by Adrian Bird, \$28, [bioattic.co.nz](http://bioattic.co.nz). **Dalmation Jasper paperweight**, \$49; **Arc vase** by Rachel Saunders, \$320, [fourth-st.com](http://fourth-st.com). **Sheepskin**, \$280, [fatherrabbit.com](http://fatherrabbit.com).



**INSPIRATION, FROM LEFT** Georgia Jay's latest leather accessories campaign, shot in Santa Fe, [georgiajay.com](http://georgiajay.com); Matter Made's exhibit at this year's Milan Furniture Fair, [mattermatters.com](http://mattermatters.com); Savannah Berber Knot rug by Armadillo & Co, \$1675, [theyivyhouse.co.nz](http://theyivyhouse.co.nz).



### Get the look

Texture's where it's at this winter and a great way to spice up a pared-back paint scheme. We used Resene Sandtex Standard tinted to Resene Swirl for a contemporary take on 1970s-style drywall.

## INTO THE WOODS

The lush botanical greens of yesteryear play nice with strong, geometric forms. Offset by the richness of stained timber flooring, they draw you in and hold you tight.

### Get the look

Dark wooden floors are undeniably sophisticated and bring an element of maturity to a space. We stained pine boards with a light coat of Resene Colorwood in Resene Dark Ebony, left on for about three minutes (the longer you leave it, the darker the finish).



Resene Thor



Resene Palm Green



Resene Tacao



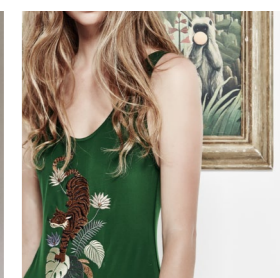
Resene Passport



Resene Dark Ebony stain



**MOODBOARD, RIGHT** Walls (left) in Resene Colorwood in Resene Dark Ebony and (right) Resene Thor; **floor** in Resene Thor; **plinths** (from left) in Resene Thor, Resene Palm Green and Resene Tacao, [resene.co.nz](http://resene.co.nz). **Vase** by Crown Lynn, \$190, [myexhibition.co.nz](http://myexhibition.co.nz). **INTERIOR LOOK, OPPOSITE Wall** in Resene SpaceCote Low Sheen in Resene Thor with **accent** in Resene Palm Green; **shelf** in Resene Tacao; **floor** in Resene Colorwood in Dark Ebony, [resene.co.nz](http://resene.co.nz). **FROM LEFT** Pare O1 lamp, \$1280, [douglasandbec.com](http://douglasandbec.com). Frida bag, \$189, [widdess.co.nz](http://widdess.co.nz). Shell chairs by Niko Kralj, \$1095, [goodform.co.nz](http://goodform.co.nz). 60 coffee table by Handvärk, from \$1199, [dawsonandco.nz](http://dawsonandco.nz). **ON SHELF, FROM LEFT** Vase by Crown Lynn, \$190, [myexhibition.co.nz](http://myexhibition.co.nz). Bowl by Hydrangea Ranger, \$32, [widdess.co.nz](http://widdess.co.nz). Vintage vessel, \$18, [bioattic.co.nz](http://bioattic.co.nz). Avocado Season artwork by Mr Rogers, \$65, [myexhibition.co.nz](http://myexhibition.co.nz). Bowl by Ellen J Hemmings, \$35, [widdess.co.nz](http://widdess.co.nz). Tumbler, \$60, [fourth-st.com](http://fourth-st.com). **Oil painting**, \$150, [myexhibition.co.nz](http://myexhibition.co.nz). **Flowers**, wooden bowl and mug stylist's own.



**INSPIRATION, FROM LEFT** Untitled photograph of kumquat tree; *Swimming Pool in St Paul de Vence* artwork by Mr Rogers, \$190, [myexhibition.co.nz](http://myexhibition.co.nz). Tiger swimsuit, \$199, [katesylvester.com](http://katesylvester.com).

## DOCTOR'S ORDERS

An energising shot of colour underfoot will really lift your spirits. Team with simple styling that favours the handmade to keep the excitement in check.



Resene Aloha



Resene Half Spanish White



Resene West Coast

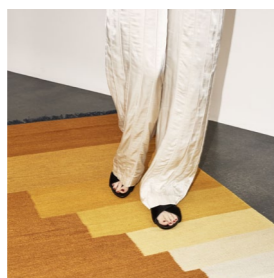


Resene Nero



Resene Colorwood Whitewash

**MOODBOARD, LEFT Wall** in Resene Colorwood Whitewash; **plinths** in Resene Aloha and Resene Half Spanish White, [resene.co.nz](http://resene.co.nz). **Wave vase** by Rachel Saunders, \$280, [fourth-st.com](http://fourth-st.com). **Mug** by Kirsten Dryburgh, \$35, [widdess.co.nz](http://widdess.co.nz). **INTERIOR LOOK, OPPOSITE Wall** in Resene SpaceCote Low Sheen in Resene Half Spanish White; **floor** in Resene Lumbersider in Resene Aloha, [resene.co.nz](http://resene.co.nz). **FROM LEFT** Formakami JH4 **pendant light** by Jaime Hayon for &tradition, \$449, [dawsonandco.nz](http://dawsonandco.nz). **Weight side table**, \$659, [cittadesign.com](http://cittadesign.com). **Wave vase** by Rachel Saunders, \$280, [fourth-st.com](http://fourth-st.com). **Do Slim mug** by Claska, \$42, [precinct35.co.nz](http://precinct35.co.nz). **Pink Divide artwork** by Vincent Langford, \$625; **Some Kind of Sky artwork** by Mallory Allen, \$70, [widdess.co.nz](http://widdess.co.nz). **355 Studio daybed** by Ercol, \$5295, [goodform.co.nz](http://goodform.co.nz). **Taupe Texture linen cushion**, \$129, [fatherrabbit.com](http://fatherrabbit.com). **Sunset Poppy Gold cushion** by Rachel Carley, \$298, [tessuti.co.nz](http://tessuti.co.nz). **Round Velvet Squab cushion**, \$150, [precinct35.co.nz](http://precinct35.co.nz). **Handwoven footstool** (legs in Resene West Coast) by Juliette Wanty, \$275, [juliettwanty.com](http://juliettwanty.com). **Flowers** stylist's own.



**INSPIRATION, FROM LEFT** Freshly ground turmeric; Vincent van Gogh's *Sunflowers* series; Another rug, [andtradition.com](http://andtradition.com).



### Get the look

This optimistic turmeric-inspired shade, Resene Aloha, makes a statement you can't ignore. Stick to a neutral palette for your walls and key furnishings so as not to overpower the senses.