

Resene

Volume 1, No. 8

Winter 1987

HEAD OFFICE AND FACTORY, GOUGH ST, PETONE, NEW ZEALAND, PHONE 684-319



Resene Paints Christchurch Manager Russell Phillips with Mainland Manager Tim Clemence in the new showroom.

Leading Christchurch Stockist Expands

Mainland Paints of Christchurch has opened up extensive new retail showrooms in Selwyn Street that provides a comprehensive direct-sales service to the interior decorator and architectural community.

The new premises also represent a major showcase for the complete Resene Paints range.

In addition to the new, expanded retail showroom, Mainland Paints has a new trade sales department with ample off-street parking available.

Mainland Paint and Printing Inks was established in 1980 and quickly built up a reputation for specialist advice on colour and application backed up by its comprehensive range of paints and wallpapers.

Winged Legend Returns to Runway *See Back Page*



Resene Paints industrial coatings specialist Orton Moon in front of the new Ministry of Defence hangar at Wellington Airport that has been refurbished with the aid of Resene products. Steam and Sand of Petone did the sandblasting of the steel structure and the application of the new coatings.

Shining Up Auckland Newspapers

Tough-talking editor Alan Hitchens, the most powerful figure in tabloid journalism in New Zealand, is usually portrayed with a determined scowl creasing his face. But Mr Hitchens managed something like a grin when RESENE NEWS snapped him outside his company's freshly painted offices on Symonds Street, Auckland.

The News Media headquarters on Symonds Street, home of Truth and the Sunday News, was painted in Resene Semi Gloss by John Henderson.

"Thanks to Resene," notes Mr Hitchens, "our building now looks like one of our newspapers. Its bright, businesslike, interesting and stands out from the crowd."

Another important newspaper headquarters to have been given the Resene treatment is the Sun building in Newtown Gully which was roller painted in Resitex Coarse by contractors J. R. Webb.

The presence of the natural light glass meant that the building was roller painted, rather than sprayed, for greater precision.

The Sun is the just-launched new Auckland morning newspaper.



Al Hitchens and newly-painted media HQ



Sun Headquarters

Takapuna Mayor Opens New Color Shop

Auckland branch organised a gala opening for the new Resene Color Shop at Takapuna. The official opening by the Mayor of Takapuna Wyn Hoadly emphasised the importance of the new Color Shop to the commercial life of the area.

The new Takapuna Color Shop features the Resene "look" – an extended bright and airy retail area for the total selection of Resene products along with a comprehensive collection of wallpapers.

It also features a bulk store and loading bay for the benefit of the many Resene bulk users in the area. The shop is close to extensive parking for the benefit of trade and domestic users.



Takapuna Mayor Wyn Hoadley cuts the ribbon



At the Takapuna Color Shop opening. The lineup. Auckland Representative Frank Watson, Color Shop assistant Peter Frith, Auckland Manager John Chambers, Takapuna Mayor Wyn Hoadley, Color Shop assistant Eddie Snelson, and Frankie Brambleby the manager of the new color shop.



Brett and Grant Lendich of Premier Paints loading up with the assistance of Resene representative Keith McKenzie.



Brett and Grant Lendich of Premier Paints, a leading contractor in the area, with the manager of the Resene Color Shop in Takapuna Frankie Brambleby.

Historic Church Restored to Glory



The refurbished St Mark's Anglican Church now the Headquarters of Norwell & Reilly, Architects and Consulting Engineers.

Partners Neville Norwell (left) and Alan Reilly inside their new offices



Resene products contributed to the eye-catching result of one of the most recent major restoration projects in New Zealand. The historic St Mark's Anglican Church in Clive, Hawkes Bay was transported 15 kilometres to a new central city site in Hastings to become the offices of the leading architectural and civil engineering practice of Norwell and Reilly. Two transepts were added and mezzanine floors at five levels built to take full advantage of the high stud that was such a part of the building which was originally dedicated in 1876.

The firm's partners undertook most of the restoration work themselves, first sandblasting the exterior weatherboards back to bare timber. Subsequently a coat of Resene Wood Primer was applied followed by two coats of Resene's Higo Acrylic. For windows and fascia trim Resene Enamel Undercoat and Super Gloss were applied.

For the interior Resene Poly Satin Lusta Glo was used on woodwork and Resene Semi Gloss later applied over glass fibre cloth on wood areas.

"The distinctive character of the building has given our firm a very high profile in the community," notes the partnership "which is immeasurable in value from an advertising point of view.

"We are mindful of the fact that the finished building is a very public statement of our abilities and expertise and as such is the measure by which the public may judge the practice."

All the paints were supplied by Resene's Hawkes Bay branches in Napier and Hastings.

Huge Cost Savings in Military Hangar Refurbishment

Resene's Technical Services Officer Orton Moon returned to an RNZAF installation for the first time in 42 years when he supervised the corrosion control coatings applied to Wellington Airport's refurbished military hangar.

During the war Mr Moon flew P40 and Corsair fighters in the Pacific.

Today, he is New Zealand's leading specialist in corrosion control applications and the RNZAF hangar is the most recent in a chain of large scale projects that Mr Moon has handled since he came out of his apprenticeship in 1938.

These projects in both New Zealand and Australia have included refineries, smelters and oil drilling rigs.

A legend in the surface coatings industry in Australasia, Mr Moon believes that corrosion control is becoming one of the most significant elements of the industry.

"Corrosion control is a major area of specialisation for Resene. No other company has the same depth of experience or expertise in protective coatings as Resene."

The old hangar at Wellington Airport is getting a new lease of life with the assistance of Resene High Build Aluminium Epoxy Mastic. This product has been applied to the frame of the elderly structure after extensive sandblasting.

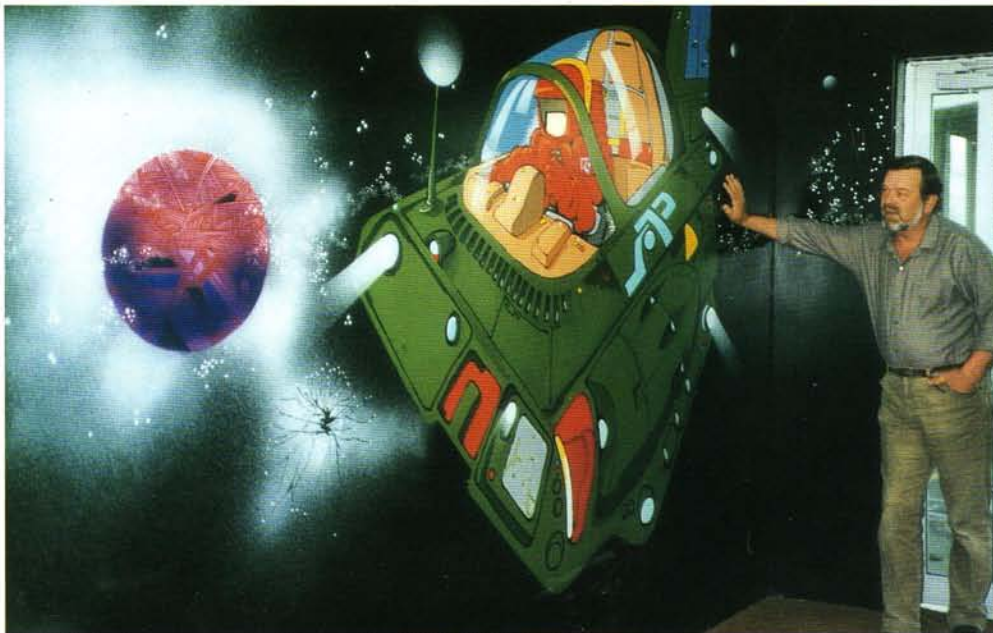
Resene High Build Aluminium Epoxy Mastic is used as a self-priming long life maintenance coat over steel, rusted steel, or galvanised steel. It has excellent adhesion to most aged paint surfaces.

In fact, the sandblasting and application of the Resene product is part of a \$1.8 million renovation that will convert the building to a modern air terminal and freight centre for the Ministry of Defence.

Already nearing completion the hangar will provide upgraded facilities for the many military and civilian personnel who fly in and out of Wellington on the Ministry's planes.

In restoring the old building the Ministry of Defence appears to have saved well over one million dollars. The cost of a completely new building would have been in the region of \$3 million.

Six scheduled flights and a freight shuttle as well as about 20 unscheduled flights, use the Ministry's Wellington facility each week.



Artist John Noakes

Decade of Service

Hamilton Color Shop Manager Gwen Reeves' completion of 10 years service with the company called for a special celebration in the Garden City recently. Resene Paints Managing Director Tony Nightingale stressed Gwen's dedicated service in retailing as an important factor behind the company's growth in the Waikato. At left is Gwen's husband Clive Reeves.



Children

Artist John Noakes is completing what is believed to be the biggest single applied art contract ever let in New Zealand.

It is the figurative decoration of the Dunedin Childrens Hospital. Mr Noakes used Resene Semi Gloss Latex for the assignment which will cover two complete floors of the hospital.