

# NEWS Resene

Head office & factory, Gough St, Petone, New Zealand. Phone (04) 5684 319 Fax (04) 5686 987 • Spring/Summer 1991

## Resene has all the answers for the Civic Square



Left to right: Jim Reid of John Henderson Ltd, Doug Simpson, Paint Effects Contractor, Clare Athfield of Athfield Architects, Dean Barr, Resene Regional Architectural Representative and John McKelvie, Library Project Manager.

The recently completed Wellington Civic Square has had Resene Paints and Systems extensively used in almost every area of the project.

In as much as the Square is a symbol of joint expertise of the Wellington City Council, the city architecture and design professions and the main contractor Fletchers, surface coatings from all areas of the Resene Paints product mix have been selected.

This project typifies the scope of the Resene Paints product range and versatility of its products and systems.

The interior of the new Library alone included products from the Resene Automotive, Resene Ameron Protective Coatings and Resene Architectural and Specialist coating ranges.

The variety of architectural styles that have been adopted for the various buildings have necessitated the use of some Resene coatings outside the traditional areas of use. Resene Paints representative Dean Barr said "exposed steel work and GRC columns that form a structural part of the building while at the same time part of the decor imposed special demands for single systems to be protective, durable and decorative, while remaining economic and viable."

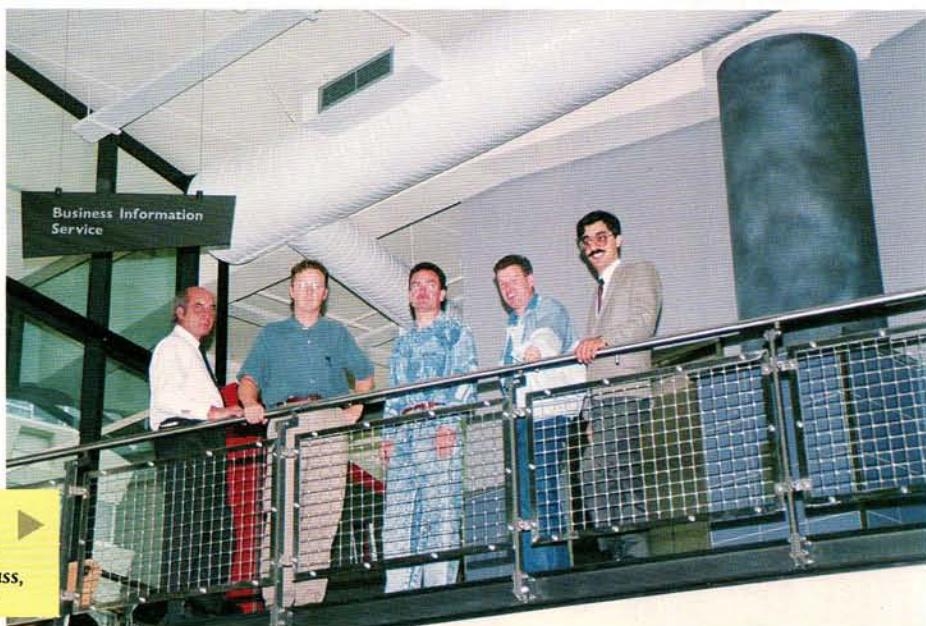
Of the current development stages, the City Administration Building, Library and Capital Discovery Place are complete with work continuing on the Municipal Office Building.

The Civic Square development will be the subject of a special supplement at a later date.

John McKelvie, Library Project Manager, Fletcher Construction and Development, Ken Davis of Athfield Architects, Sven and Peter Andersen, S.E. Andersen and Jim Vass, Resene Protective Coatings Representative.



Wellington City Administration Building



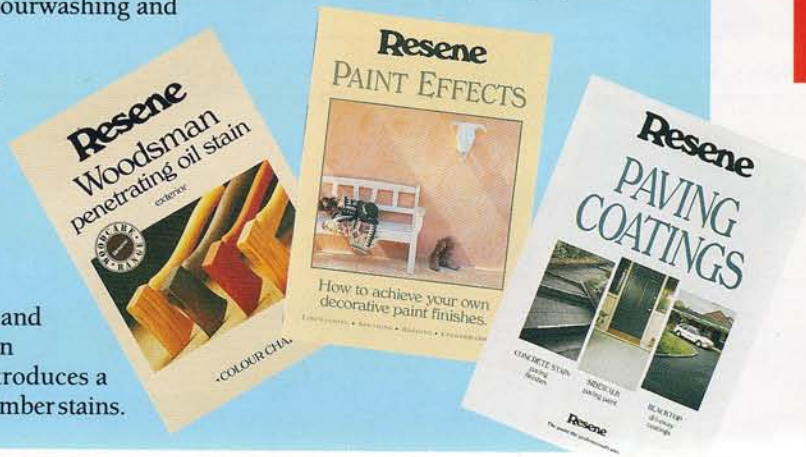
# New colour selection

Resene Paints are now able to offer its customers an array of colour charts to cover the recent launch of new products and colour ranges.

The Paint Effects Chart has details and suggested colourways for sponging, ragging and introduces a range of colours for colourwashing and limewash effects.

The new Paving Coatings chart which incorporates a new colour range for Sidewalk and the latest product innovations from Resene Paints, Concrete Stain and Blacktop Driveway Coating.

Also new point of sale material and colour chart support Woodsman Penetrating Oil Stain, which introduces a new colour concept for exterior timber stains.



The first  
of many  
success  
stories.

Pictured here is Bruce Tustin outside his premises in Karori, Wellington.

Gordon Tustin Ltd was the new DuPont Automotive Re

The Managing Director of C the Auto Refinish business. selling point” he said.

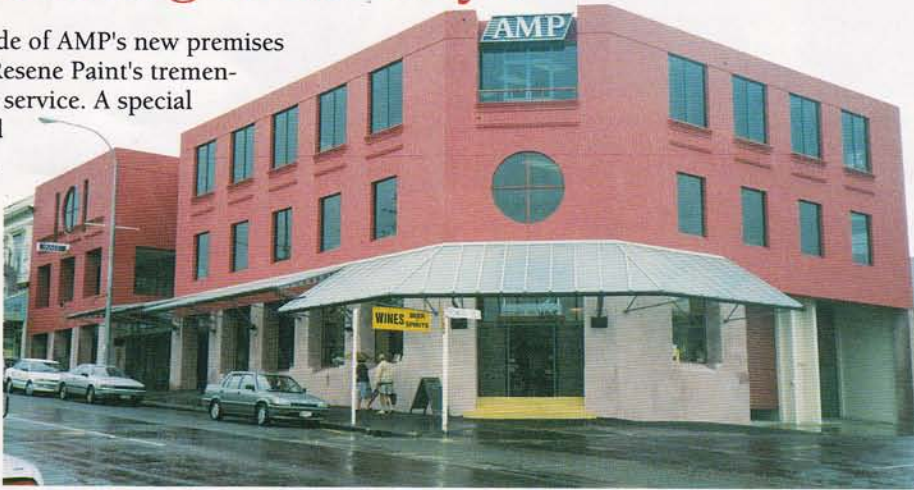
As the world leader in Auto supply colour matches for v

To support this activity Res colour laboratory to keep p Australian assembly plants.

# Colour matching to ashtrays?

The arresting red facade of AMP's new premises in Parnell highlights Resene Paint's tremendous colour matching service. A special custom colour dubbed 'Ashtray Red' resulted from matching the colour of the client's favourite ashtray and apparently the name has stuck.

Resene Paints offer the customised service in response to its customers special colour needs.



Resene ColorShop Papakura

# Air New Zealand hangar protected with Resene Ameron

When the Air New Zealand maintenance hangar at Christchurch Airport required a repaint, Air New Zealand specified Resene Ameron Protective Coatings.

The Christchurch branch of Programmed Maintenance Services, under the management of Charles Brown, applied 5000 litres of Amersfield High Build Acrylic Urethane and Amerlock 400 AL High Solids Epoxy to an overall area of 28000 square metres.

Resene was selected for its single application Primer/Finish specification for the coloursteel and galvanised long run structure. The immense size of the building meant prospective contractors would be subject to high scaffolding and access costs but the Resene specification meant a saving in time and materials.





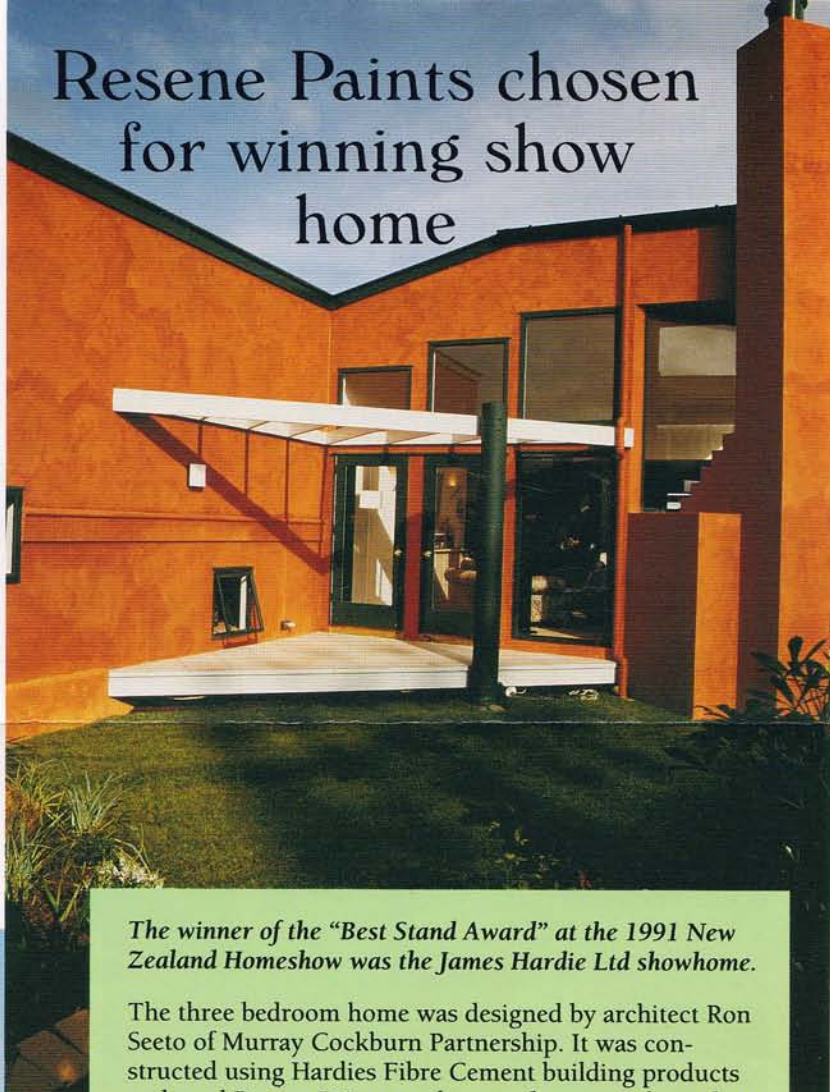
first panelbeater and auto refinisher in the country to install the finish System, which has now been incorporated for 16 months.

Gordon Tustin Ltd, Bruce Tustin has over 20 years experience in The colour indexing and trueness of colours was a major

otive Refinish, DuPont Automotive are now able to source and virtually any vehicle imported to New Zealand.

ne Automotive presently employ three full time staff in the ce with the demand for new colours from New Zealand and

## Resene Paints chosen for winning show home



*The winner of the "Best Stand Award" at the 1991 New Zealand Homeshow was the James Hardie Ltd showhome.*

The three bedroom home was designed by architect Ron Seeto of Murray Cockburn Partnership. It was constructed using Hardies Fibre Cement building products and used Resene Paints products and systems throughout. Zylone Sheen, Washable Wallpaint was used extensively on the interior.

Commenting on the project, Resene Paints Sales and Marketing Manager, Andrew Gunn said that "the level of cooperation between the two companies and the mutual recognition of leadership in their respective markets make for an ideal working relationship."

The exterior Harditex sheets were jointed using the Resene Jointflex System and coated with Resene Resitex Textured Coating, a limewash effect was then applied to give the building its distinctive appearance.



and Johnsonville ▲



## Resene distribution network expands

Recent months have seen the addition of two new Resene Color Shops and the relocation of a third within the company's network.

The first is a new shop located at 31 Elliot Street in Papakura, Auckland. Steve Scott, Resene Paints Northern Regional Manager, commented that the increased representation in the South Auckland Area was indicative of Resene Paint's commitment to increasing customer service.

The second, at 111 Johnsonville Road in Wellington, open seven days a week, brings the total to six in the greater Wellington area and the national total to thirty four.

The Taupo Resene Color Shop has been relocated to a more convenient site at 153 Ruapehu Street. Trade and retail customers alike will benefit from the move that has been combined with a higher profile in the area.

**Resene**

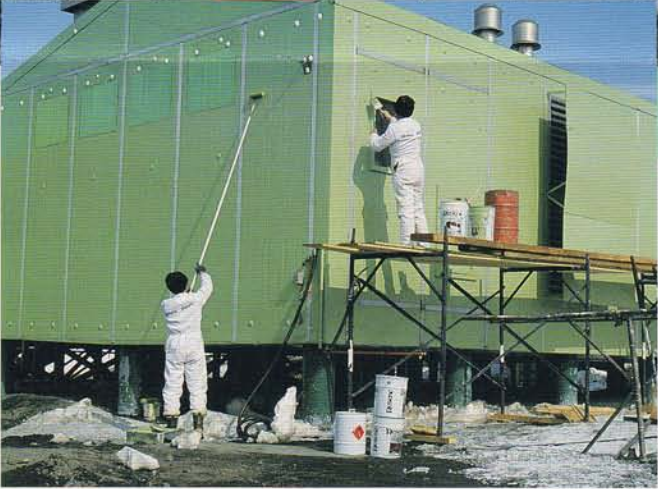


## Resene Ameron conquers the Antarctic!

Christchurch painting contractors John Lyall and Steve Waldron have experienced some of the coldest summer temperatures New Zealand has to offer. They have been responsible for a recent refurbishment project at Scott Base in Antarctica.

The refurbishment involved an exterior repaint of a utility building and the complete redecoration of a building constructed for the Hilary expedition to the South Pole, which will now house a local museum.

Resene Ameron Zinc Phosphate Primer and High Build Chlorinated Rubber were specified for their ability to dry in the sub zero temperatures, as well as the elastomeric properties to cope with the expansion and contraction of the substrate during the 35 degree annual temperature fluctuation in Antarctica.



## New product release

To compliment the range of paving coatings recently released, Resene Paints have developed another unique product.

Blacktop is a low cost, do-it-yourself resurfacing compound designed for recolouring and rejuvenating asphalt driveways, tennis courts and other recreational areas.

Blacktop is a heavy bodied bitumen emulsion containing graded fillers to enhance slip resistance.

It is applied quickly and easily with a Blacktop Broom and is available in Black, Red and Green.



From left to right: Upper Hutt Mayor, Rex Kirton and Tony Nightingale, Managing Director of Resene Paints Ltd. outside the new Resene factory in Upper Hutt.

## Major investment in manufacturing plant

Resene Paints has moved one of its manufacturing plants to Upper Hutt. Formerly in premises in Gracefield, Resene have extensively modernised the purpose built plant to suit their manufacturing standards.

With greatly increased capacity, the plant is dedicated to the production of all oil based architectural products and the Resene Ameron range of industrial coatings.

Every effort has been made to ensure accuracy in this publication, but Resene accepts no liability for any errors of fact or opinion expressed herein.

