

Resene

NEWS

Head Office, Vogel St, Lower Hutt, P.O. Box 38 242, Wellington Mail Centre, New Zealand. Tel +64-4-577 0500, Fax +64-4-577 0600. ColorShops throughout New Zealand

World first for Resene

A new waterbased enamel has just been launched by Resene Paints - the first of its type in the world.

Resene Enamacryl and Lustacryl are waterbased, 100 percent acrylic finishing paints for woodwork and other surfaces where Super Gloss or Lusta-Glo are normally used. Typical areas of use are kitchen cupboards, bathrooms, laundries, service areas, doors and window joinery.

Resene Paints technical director Colin Gooch says the results of the new waterbased enamels are outstanding, thanks to a new acrylic resin. Performance-wise, they rate as highly as their traditional solventbased counterparts.

"When applied, the Enamacryl and Lustacryl flow out to a smooth surface," he says. "And when they're fully dried, they have excellent block resistance, grease resistance and non-yellowing in dark and light areas."

Other benefits include: rapid drying and fast recoat times; they can be used on both the interior and exterior of the house; paint brushes clean up easily in water; and there's a wide range of colours to choose from.

Lustacryl white and colours are now in Resene ColorShops, while Lustacryl bases and Enamacryl will start being released from November.



▲ A world first for Resene, waterbased Enamacryl and Lustacryl.

The generation game

Taking responsibility for the protective paint coating of this impressive structure - a wind turbine more than 44 metres high - was a recent first for both Resene Paints and Wellington paint contractors Steam and Sand. The turbine is one of seven now up and running in New Zealand's first commercial windfarm, 'Hau Nui', in the Wairarapa.

Resene matched detailed paint specifications supplied by the German designers of the project, Enercon, who required long-term protection for the towers in the area's aggressive, almost marine, environment.

Colours, banded from green at the base through to light grey at the highest point, were designed to make the turbines easy on the eye and the environment. Each tower was fabricated in two sections by ACME Engineering in Petone, and then trucked to Steam and Sand in nearby Seaview. There, they were prepared by abrasive blasting and arc-sprayed zinc, given an epoxy intermediate coat of Resene's Amercoat 385 and finished with two coats of Resene Uracryl 402.

The finished project supplies more than 6 percent of the Wairarapa region's electricity needs. Its success means that wind farms may soon be more common features on the New Zealand landscape.



▲ One of the seven Resene-painted wind turbines at Hau Nui, near Martinborough.



▲ Representatives from the construction and painting team (from left to right): Mark Hammond (Steam and Sand); John Kilby (Resene Ameron); Colin Young (ACME Engineering) and Ken Trail (Steam and Sand).

Resene - the paint the professionals use

NZIA-Resene partnership continues to recognise architectural excellence

Three diverse projects - a private home, a golf club and a design firm's office - were the winners of the 1996 New Zealand Institute of Architects-Resene National Awards for Architecture. Two 25-year awards were also made, the Athfield family house in Wellington by Ian Athfield and the University of Auckland International House by JASMaD Architects. It is the sixth year the awards have been sponsored by Resene Paints. Resene also sponsors the regional architecture awards - the 1996 programme is well under way with competitions having already taken place in Western (New Plymouth) and Southern (Dunedin) regions, Hawke's Bay/Gisborne and most recently Canterbury, where a record 56 entries were received.



1

2



3



4



5



6

From top:

1. Ian Athfield's family home in Wellington.
2. At the awards gala dinner, from left: NZIA president Alick Bellerby, Resene Paints managing director Tony Nightingale, Thom Craig and Roy Wilson (Warren and Mahoney Architects) and Stuart Gardyne (Architecture +).
3. Ocean Design corporate interior by Architecture +.
4. Te Mai Mai coastal home by Craig Craig Moller.
5. Miramar Golf Club (Inc) by Warren and Mahoney Architects Ltd.
6. University of Auckland International House by JASMaD Architects.



Historic elegance restored

The \$20 million restoration of one of New Zealand's most famous constructions, the historic wooden Government Buildings in Wellington, has been completed to much acclaim.

J and R Enterprises used Resene's X200 and two coats of F10 glaze on the exterior's weatherboards with Uracryl 403 on the timber sashes.

The interior paint work was undertaken by Paintech. Works Consultancy Services architects John Rowe and Bernard Napp specified the colour scheme.

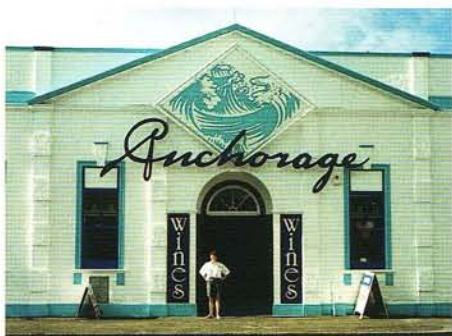
The building, which is more than 120 years old, is now the home of Victoria University's Law Faculty.

From left: Trevor Griffiths, project manager, McKee Fehl Constructors Ltd; Resene Paints architectural services manager Malcolm Fleming and Gordon Crozier of Paintech Ltd. who painted the interior. ▶



New ColorShop good news for Whakatane

Whakatane's new Resene ColorShop, in the eastern Bay of Plenty, has had a colourful 1996. ColorShop manager Vern Peterson says that since it opened, business has been "flat out". Featured below are some of the local projects Resene has had a hand in:



▲ Setting up specialty wine store, **Anchorage Wines**, in Whakatane's former County Chambers Building, was a year-long project for owner Diane Mangham.



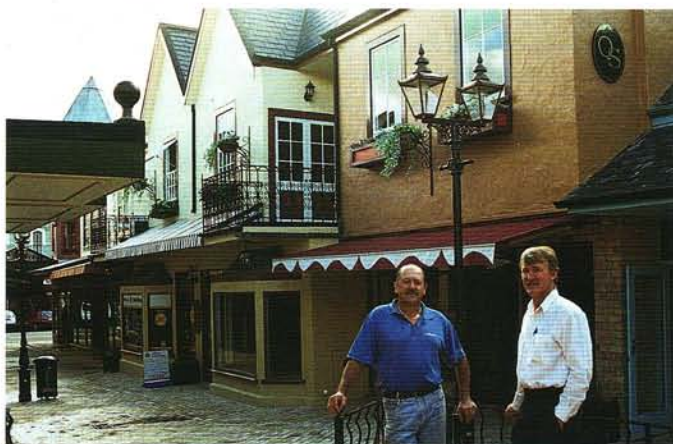
▲ John and Robyn Hollings opened their 14-unit **Barrington's Motor Lodge** in December. Contractor Wim Blommerde, of Whakatane Painters, completed the job with Resene paints.



▲ Chambers on the town's river-front have been put to colourful use by tourism operator **Dolphins Down Under**. The company moved to its new premises, renovated with Resene paints, late last year. Pictured are co-principals Barry and Jo Wenham (centre) with staff members Doug Posa (left) and Craig Posa (right).

Olde English elegance in Whangarei

A little bit of olde England has found a corner in Whangarei where the former Whangarei hotel, Lofty Blomfelds, once stood. The street of shops was designed by architects Stiffe, Hooker and Associates in conjunction with developers Greg and Carol Guy. Paint contractors A. J. Erceg applied a paint system using Resene Hi-Glo, Lumbersider, Zylone Sheen and Timberstain.



▲ Paint contractor Tony Erceg and developer Greg Guy on Quality Street.

Capital landmark revamp

Wellington's waterfront has been receiving a great deal of attention recently with the on-going construction of the Museum of New Zealand and the development of the Queens Wharf shopping complex and Events Centre.

But older structures haven't been ignored. A mammoth repaint of the former Wellington Overseas Passenger Terminal was completed recently by John Henderson Painting Contractors.

Some 3,845 litres of Resene Lumbersider, chosen because of its durability, was used.

From left: John Henderson Painting Contractors John and Charles O'Donnell with Resene sales representative Jamie Cooper and Resene Paints architectural services manager Malcolm Fleming at the Overseas Passenger Terminal. ▶



Capital's quay to home decorating

The country's largest Resene ColorShop opened recently in Wellington on Thorndon Quay, which is fast gaining a reputation as the 'quay to home decorating'.

The 500 square metre showroom has a dedicated trade area to make service fast and efficient, says manager Steve Hazelwood.

His team includes interior designer Jo Hockley and Carey Strand, the 1991 and 1992 Paint and Decorating Apprentice of the Year.



▲ The recent gala opening of the Thorndon Quay Resene ColorShop attracted thousands of home renovators.



▲ Resene's newest ColorShop in Thorndon Quay.

Brushstrokes

Colour Match a winner...

Resene's Colour Match - coded pencils which match Resene paint colours - have proved extremely popular with architects and design professionals.

So much so, that the concept caught the eye of judges of the New Zealand Institute of Building/James Hardie Awards. The pencils were highly commended in the awards' Building-Related Innovation category.

One in three architects have purchased a set since they first became available a year ago.

"The Colour Match system has proved both practical and useful, reinforcing Resene Paints' position as a leader in colour, innovation and service to professionals," says Resene brand manager Blair Lill. The Colour Match system, which includes 102 pencils, a wooden stand and a glossy, full-colour guide is available to architects through Resene Paints representatives for \$175, including GST.



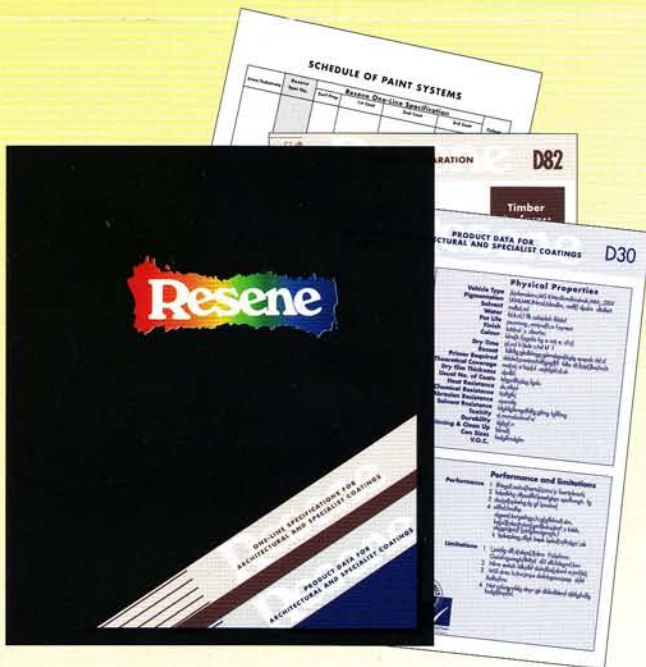
One-Line revolution in specification writing

Clear and simple paint specification guidelines designed to make life easier for architects and other paint specifiers have just been introduced by Resene.

The new One-Line Specification Manual allows users to follow logical thought processes to arrive at a 'one-line' paint specification - and is available from Resene representatives now.

Paint specifications can cover the spectrum in terms of detail and information - as any paint contractor can confirm.

Research carried out by Resene Paints confirmed that architects were looking for clear, simple guidelines for paint specifying - and the new Resene One-Line Specification Manual is the company's response. "We have created a new, up-to-date specification manual that follows logical thought processes, starting with the paint substrate to be painted - not the paint product", Resene brand manager Blair Lill says. Over 1,500 manuals have been requested by architects and painters so far.



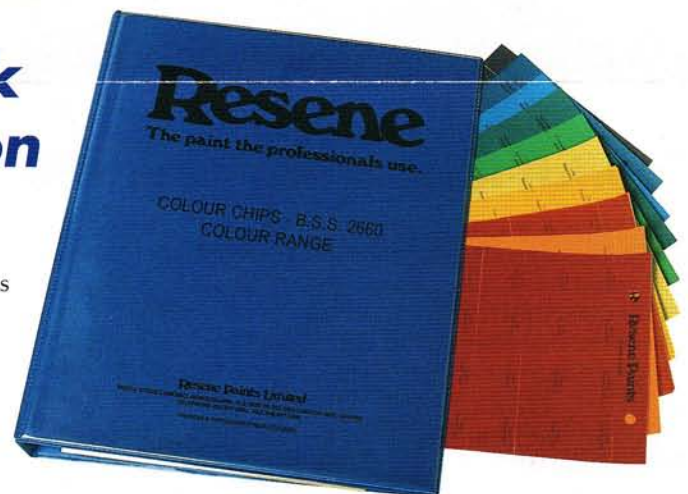
New Colour Chip Book expands colour selection tool range

The popularity of Resene's self-adhesive colour chips among architects and colour specifiers has led to a new addition to the Resene colour selection tool range - the BSS 2660 range Colour Chip Book.

"Architects are really beginning to appreciate the benefits of self-adhesive colour chips," says Rankin Jays, Resene's product manager. "We already have chip books for our Total Colour range and the BSS 5252 range, and we have responded to customer demand with the production of a book for the BSS 2660 range."

The BSS 2660 range of 101 colours was developed by the British Standards Institute in 1955 - and Resene was the first to market this early standard colour range in New Zealand.

The new BSS 2660 Colour Chip Book is now available from your Resene representative.



▲ BSS 2660 Colour Chip Book - enhancing Resene's colour tool range.

Resene News is published by the Resene Paints Marketing Department. For further information about any of the products featured in this issue of Resene News, please contact the Resene Paints Marketing Department, 32-50 Vogel Street, Naenae, New Zealand, Telephone (04) 577 0500, Fax (04) 577 0600. Every effort has been made to ensure accuracy in this publication, but Resene accepts no liability for any errors of fact or opinion expressed herein.

This publication is printed on 50% recycled paper.