

In New Zealand, PO Box 38-242, Wellington Mail Centre
Call 0800 RESENE, visit www.resene.co.nz
or email advice@resene.co.nz

Resene
the paint the professionals use

In Australia, PO Box 785, Ashmore City, Queensland 4214
Call 1800 738 383, visit www.resene.com.au
or email advice@resene.com.au

modern meets artefact



The largest new museum development since Te Papa, Puke Ariki in Ariki Street, New Plymouth is a source of pride for Taranaki locals. Winner of numerous awards, it is a bold, inspiring and interactive experience for visitors featuring the paints of Resene.

The interior fitout incorporates five galleries and four floors of public library, each with a unique and specific ambience, together with 3000 artefacts, 2500 interpretive graphics, 35 multimedia interactives, specialist audiovisual and multimedia elements, stunning use of theatrical lighting throughout and a strong relationship between space, colour and visitor experience.

Puke Ariki spreads over two buildings linked by a glass-clad airbridge - an entirely new purpose designed North Building and the fully redesigned historic New Plymouth Public Library South Building. The building architecture and base interior design was created by Boon Goldsmith Bhaskar.

Colour plays an integral part in the realisation of the design vision for the Puke Ariki complex, creating the excitement, moods and ambience needed for each specific zone, and bringing the museum and library spaces to life.

Exterior cementitious surfaces gleam with the semi-gloss finish of Resene Sonyx 101 tinted to hues of Resene Domino (warm grey brown), Resene Kilimanjaro (deep grey brown), Resene Scooter (turquoise blue), Resene Monza (bright red), Resene Saffron (orange yellow) and neutrals Resene Tea (muddy neutral), Resene Concrete (silver grey) and Resene Tapa (grey neutral). Bold hues underpinned by solid neutrals for visual interest and an appropriate sense of occasion.

The interior palette extends further into brights and bolds featuring Resene Lipstick (pink), Resene Zest (orange), Resene Monza, Resene Scooter, Resene Wasabi (muted lime green), Resene Jellybean (clean

turquoise blue) and Resene Sushi (lime green) calmed by Resene Bianca (light cream), Resene Diesel (dark black-red) and Resene Half Dutch White (warm cream) with Resene Ironside Grey (deep grey) on the ceilings to minimise reflection and focus attention on the exhibits.

Easy clean finishes of Resene Lustacryl semi-gloss waterborne enamel and Resene Enamacryl gloss waterborne enamel dominate the sightlines joined by Resene Zylone Sheen low sheen acrylic on paperfaced plasterboard, MDF and particle board. Accents of Resene Enamacryl Metallic tinted to Resene Blast Grey (metallic silver grey) are a fitting finish to ferrous metals making way for the same hue tinted into Resene Uracryl in stairwell areas for maximum durability.

Whether creating the reflective, contemplative zone for the War Memorial or the vibrant spiritual ambience in the Takapau o Taranaki Gallery, the lush and earth focused hues of the Taranaki Naturally Gallery or the quirky bold colourways of Discover it! - the children's library and activity centre - Resene's palette of both subtle and vibrant colours gave 3D Creative the scope to design an outstanding colour-rich experience for visitors and staff alike.

The internal arrangement of space breaks away from the formal tradition of library and museum layouts with five former levels making way for a four storey void. The absence of book stacks from the external

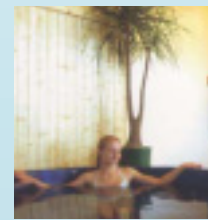
walls and a fresh coat of white gives a sense of airy space with an ambience of light.

A groundbreaking mix of museum, library and information centre, Puke Ariki has set a new standard for museums, both in New Zealand and around the world.

Architect: Boon Goldsmith Bhaskar
Interior Fitout: 3D Creative (www.3dcreative.co.nz)
Resene: Camille Jaspers, Wellington Architectural Services Representative; New Plymouth ColorShop

Building Contractor: Clelands Construction
Painting Contractor: IT Lamb Decorators





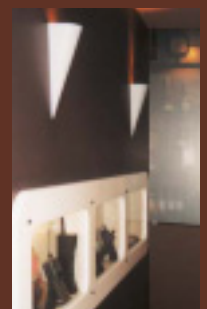
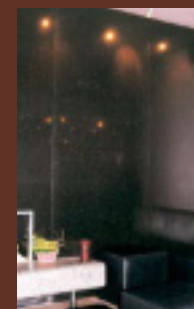
Home sweet home takes on new meaning for Styx Mill residents when a short leisurely stroll will bring them to the doorstep of their own exclusive access country club. Located at 160 Hussey Road, Harewood, Christchurch, Styx Mill is a new community of 212 sections and 90 villas.

At the heart of this development is the Styx Mill Indoor Pool and Country Club, a recreation centre and community facility owned by Styx Mill residents to which they, their immediate family and accompanied guests have exclusive access. Drawing on the roman spa theme, the Country Club features an indoor swimming pool with waterfall and 25 metre lap pool, spa, sauna, gymnasium, barbecues and tennis courts - a world of leisure at residents' doorsteps.

In keeping with the architectural style, the exterior of the Country Club is finished in **Resene Napa** (grey beige neutral) highlighted by **Resene Parchment** (light beige neutral) window reveals and columns, and firmly grounded in **Resene Sandstone** (light brown oxide) to give strength to the building base. The interior of the indoor pool area features a tiered scheme of **Resene Sisal** (light beige neutral) walls and **Resene Parchment** columns with **Resene Abacus** (pale slate blue) mouldings to blend. Those backstroking across the pool can gaze into the **Resene Tiara** (greyed off white) ceiling selected to reflect the cool aquatic blues of the water.

In the accompanying Country Club offices, **Resene Coral** (brown oxide neutral) is used on the walls with **Resene Spanish White** (complex off white) highlighting the ceilings, doors and colonial architraves and skirtings, a neutral easy to work into a scheme. To soak in the sumptuous décor, the air of luxury and the inescapable excuse to simply relax and enjoy, you'll have to buy in to get in. A truly exclusive experience.

Builder: Chas S Luney Ltd Designer: R & A Design Interior Designer: Liz Butts and Abbie Brown, Rubix Design Painter: Dixon and Dixon Property Developer: Kevin Carlin, Carlin Enterprises
Resene: Henrietta Savill, Christchurch Architectural Services Representative



got smart

Mention of Agent 86, Agent 99 and a shoe phone will have sixties television fans yearning for the antics of Maxwell Smart, the inept spy-cum-lead actor in the series Get Smart. Working with the oldest building in Pukekohe, Auckland, new owners wanted to create an upmarket venue for the increasing number of affluent Pukekohe residents saving them the 45 minute drive into the central city. Recognising the need for divergence from the normal local gumboot look, Maxwell Smart has been used to drive the difference in design and is permanently immortalised in the establishment's name - The Smart Bar. The 86 and 99 agent numbers feature in the custom designed wine display/bar logo and a series of mobile phones are showcased as a tribute to the original shoe phone and as an allusion to the smart businesslike personality of the bar.

Zoned for pleasure, the bar includes a plasma screen with central leaner for sports fans and casual drinkers, chill out spaces with fireplace and comfortable sofas for fireside chats with friends and a separate bar area for private functions.

The 'Smart' feel has transcended to the finishes avoiding the garish hues and patterns of the sixties in favour of a sleek **Resene Lumbersider** satin acrylic tinted to **Resene Diesel** (dark black-red) exterior combined with an interior of warm timber, dark walls and crisp white - in short, Maxwell Smart's suited dress sense translated to wall, floor and ceiling space. Inside **Resene Zylone SpaceCote** in hues of **Resene Mash** (deep brown), **Resene Diesel** and **Resene Wan White** (off white) from the **Karen Walker collection** join wallpaper from the Resene heavy metal collection for clean edged upmarket style.

From tired and uncared for to a reincarnation of Maxwell Smart in spiffing style, get smart and get there.

Interior Designer: Ria Gleeson, RG Design
Painting Contractor: Haven NZ
Resene: Philip Thompson, South Auckland Branch Manager

A new interior fitout in Great South Road, Penrose, Auckland boldly goes where many office fitouts are afraid to tread... into the realm of the complex brights of **The Range collection**.

The fitout at Wood & Partners is finished in Resene acrylic systems tinted to hues of **Resene Paprika** (raspberry red), **Resene Aubergine** (eggplant-burgundy) and **Resene Afterburner** (yellow-red) tied together with the popular neutral **Resene Drought** (dusty beige) to reflect the client's corporate image and core function of land surveyance. The combination of these hues is warm and welcoming with the **Resene Drought** providing breathing space between the stronger hues to ensure the scheme is tantalising but not overpowering.

With the new look in place, getting clients in the front door is easy - distracting them from admiring the walls is considerably more complicated.

Interior Design: Jane Eyles-Bennett,
Spaceworks Commercial Interior Design Ltd





The Carter Holt Harvey Kawerau manufacturing facility has a reputation as somewhat of a local softspot churning out endless metres of tissue. Extensive manufacturing floorspace, dedicated to continuous production and an enviable array of specialised equipment, is a hive of activity in the bid to keep up with the sneezing, teary eye and personal care demands of the market.

With ever increasing OSH safety requirements and a desire to minimise workplace hazards, Carter Holt Harvey have implemented a **Resene Non-Skid Deck and Path** finish on the factory floor to provide a gripped surface for workers to reduce the risk of falls.

Resene Non-Skid Deck & Path was selected following a trial of the system shortly after it was launched. Trial patches were applied in high foot traffic areas and monitored. Each patch performed with ease, surpassing expectations and easily justifying the rollout of the coating solution to the broader factory environ. To date 500 square metres of floor have been coated in Resene Non-Skid Deck & Path tinted to **Haast Shale** (mid grey), with plans to double this coated floor area by year's end.

With Resene Non-Skid Deck & Path keeping a grip on workers, all are free to forget their feet and focus on keeping the tissue flowing.

a - tissue

Painting Contractor: Fred Gollop, Corrosion Control (NZ) Ltd, Kawerau
Resene: Tony Taylor, Rotorua Trade Sales Representative



roughing it

Recreating the dry dusty look of the natural habitat of the buffalo drove the design of The Buffalo Club in Brecon Street, Queenstown. In a total revamp of the previous bar that occupied the site, walls have been plastered with yellow sand then combined with a lightly textured **Resene Sandtex** finish on ceilings in **Resene Double Spanish White** (complex neutral). A matching yellow sand finish dominating the exterior is combined with **Resene Waterborne Woodsman** on balcony areas, a combination of finishes that takes one back to true Buffalo country. Inside beams and ceilings are finished in **Resene**



Waterborne Colorwood Dark Oak to enhance the natural appearance of the timber. The look is completed by doors, frames and skirtings in **Resene Lustacryl Double Spanish White** and a stampe of thirsty customers soaking in the atmosphere then rehydrating their senses with their favourite drink.

Architect: Maurice Orr Architecture
Building Contractor: Richard Heberton Builder
Painting Contractor: Rob Cournes, DP Painters
Resene: Annette Gin, Queenstown Trade Sales Representative

Brisbane tourists looking for somewhere to sleep can now head for Bunk, a large backpackers lodge in Gipps Street, Fortitude Valley.

From tip to toe, this lodge employs consistent imagery both inside and out to ensure it is memorable to lodgers and likely to be on the tips of their tongues when recommending places to stay.

Outside the building is protected by **Resene X-200** waterproofing membrane tinted to the warm off-white **Resene Bianca**, which acts as a backdrop for the **Resene Lumbersider** tinted to **Resene Pohutukawa** (deep red) branding. The striking red on near white can be seen from a long distance - the perfect advertisement when you are trying to attract those travelling by foot.

Inside **Resene Zylone Sheen** is seemingly everywhere in a mix of hues from The Range collection. Light hues meet bright and bold as different spaces are defined by their wall colour.

Great location, full of colour and space, this backpackers lodge is head and shoulders above the usual fare the unwitting backpacker stumbles into.

Colour Designer: Carmel Haugh
Painting Contractor: Carlos Perez, United Colours
Resene: Jason Osborn, Australia Trade Sales Representative



the right part



When you are a specialist parts company with a strong foothold in the sprawling South Auckland market one of the keys to continued strong sales is simply making sure your customers can find you easier than your competitors - once they are in the door the service and products will impress and customers will keep coming back.

Using a rolling repaint scheme to minimise resource requirements, the project comprising 14 individual franchised sites of concrete block and Hardiboard construction is transforming the image of Parts Connection. Each site has a differentiated colour scheme, based on a predominant use of a special corporate yellow for instant recognition of the brand combined with a secondary colour or colours of the franchise choice to suit the individual location and building style.

The corporate colour scheme has been wholeheartedly embraced by business owners, to the extent that it is being used as the basis for rebranding other elements of the business - a clear case of the decorating deciding the design.

Colour Selection: Meryl Southey-Brown, Resene Colour Consultant
Resene: Duane Thompson, Auckland Trade Sales Representative

beach bunny

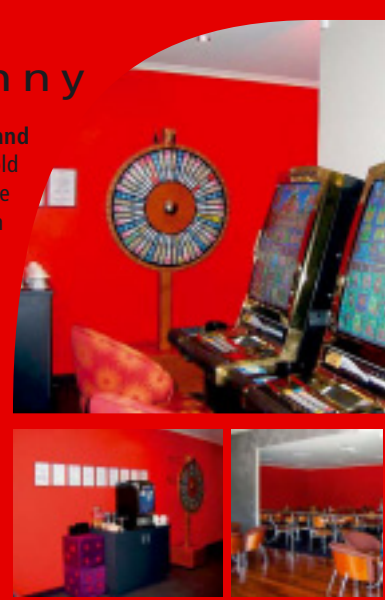
Once the Pacific Coast Hotel and now The Beach Hotel, 2663 Gold Coast Highway is the perfect place to refuel the mind and body when a Surfer's Paradise retreat is on the to-do list.

The recent rebranding of the restaurant and bar included an extensive interior refurbishment, surrounding guests in well located style. The dated painted interior including an array of wood surfaces was swiftly transformed to modern with coats of Resene Zylone 20 flat acrylic, selected for its luxurious suede like finish and low odour, and Resene Zylone SpaceCote, selected for its durability and all round good looks, throughout the interior envelope. The very popular Resene Akaroa (pale pebble grey) was used as the primary colour punctuated by features of Resene Flash Point (fire red) complemented by Resene Rice Cake (yellow white) and Resene Makara (mid tone neutral).

Careful balancing of the neutral backdrop with placements of bold feature means no matter whether guests are high energy or ready to relax, they will feel in sync with their surroundings.

Designer: Jenni Parsons, Design Design
Painting Contractor: Colourmode

Resene: Liz Goodman, Architectural Representative; Brendan Armstrong, Trade Sales Representative



Eight viewpoints, a rugged cliff face and a need to move your family in sounds like a recipe for disaster. Instead, these challenges have been wrapped together and resolved with the Mills House located in Days Bay, Wellington, then later rewarded with a NZIA Resene New Zealand Architecture Award.

Every centimetre counts in this home with a lack of flat land and a cliff to contend with limiting the scope for horizontal extension. The harbour view is drawn into the house to enlarge living areas and de-emphasise the site limitations. Surprisingly, while the home is perched on the roadside, passing traffic goes by unnoticed.

Broken into three floors, the children occupy the lower floor, topped by family living and the master bedroom with a breakaway top floor designed as the adult and guest retreat. This vertical separation provides the eight family members with much needed breathing space and allows a getaway for the adults.

Mills Architects' homes are associated with strong use of colour and this home is no exception to the rule. Colours ranging from Resene Golden Bell (orange) and Resene Rose Bud Cherry (pink red blend) to Resene Christi (bright green) create contrasting moods in different areas providing visual breaks in the predominantly open plan layout.

Sun and sea, space and style, this home combines the best of them all.

Architect: John Mills Painting Contractor: Ian Robinson Painter

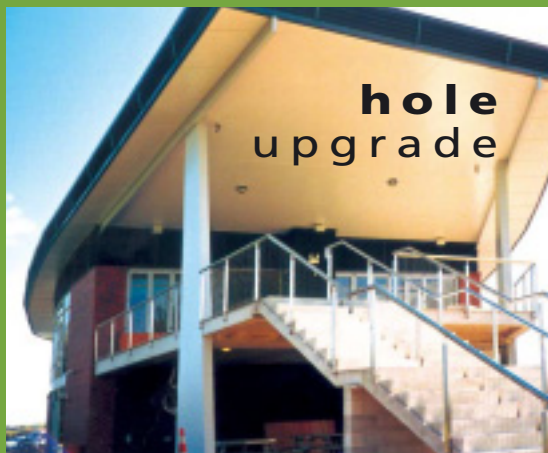


centimetres count



Golfers at the Ngaruawahia Golf Course on State Highway 1 are in for a treat next time they hit the 19th hole. The existing golf club building that had stood for many a year and witnessed many a putt and pint sunk was demolished to make way for a new, considerably more substantial facility. With the new building in place completely changing one's first impression of the club, even those familiar with the club are hard pressed to recognise the course as the same location, The exterior gleams in a Resene Sonyx 101 semi-gloss acrylic finish teamed with Resene Super Gloss full gloss enamel on exposed steel beams for a fresh, easy to maintain exterior. Inside the sheen level is more muted in keeping with the atmosphere of relaxing after a hard round, with Resene Zylone Sheen used extensively over paperfaced plasterboard finished broadwall areas. Hi-bond ceilings have been treated to a coarse texture in the form of Resene Resitex Coarse - perfect for covering up surface imperfections while also adding a new textural dimension to the finish. The interior specification is finished with Resene Lusta-Glo semi-gloss enamel on service areas for a tough, durable finish that will be easy to clean but perhaps a little less glossy on the eyes than a higher gloss system. With such a fine facility, one is almost tempted to leave the golf clubs at home and just sit back and relax in the clubrooms, leaving others to wander around the extensive fairways in their often fruitless attempts to master little white balls.

hole upgrade



Architect: Peter Chibnall, Chibnall Swann Team Architecture
Building Contractor: Foster Construction
Painting Contractor: Morrison Decorators
Resene: Paul Wootten, Waikato Branch Manager;
Peter Smithers, Waikato Trade Sales Representative



The Resene News now extends beyond these printed pages



Check out more projects online at www.resene.co.nz/archspec/products/index.htm



canvas calling

Lyn Bergquist's latest works feature stylised coastlines, cleverly framed by driftwood for a tactile 3-D experience. Lyn used Resene Quick Dry Acrylic for canvas preparation then Resene Lumbersider satin acrylic in distinctive Resene hues.

Artist: Lyn Bergquist, Warkworth



full of pride

Taking pride in the community is easy with murals in the Murupara Town Centre decorated by using Resene Lumbersider then protected against graffiti by Resene Uracryl.

Artist: Greg Scott
Resene: Whakatane ColorShop



regal coating

The low odour of Resene Zylone Sheen allowed the Monarch Café in Pukekohe to be quickly repainted and returned to service.

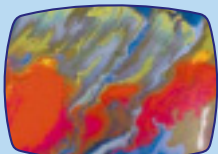
Painting Contractor: R & E Reddish and EA & JP Nichols
Resene: Duane Thompson



fresh start

If a picture is worth a thousand words, the view of this Wellsford residence must be worth double. A bold interior scheme gleams in Resene Zylone Sheen and Resene Lumbersider.

Architect: David Foster, ADC Architects
Painting Contractor: Will Bakker
Building Contractor: Phillip Wayne, House Co.
Resene: Brian Trott, Orewa/Warkworth Trade Rep



paint abuse

Despite considerable abuse in the course of new art, the colour strength of Resene paints has shone through yet remained tough and flexible.

Artist: Lois Perry



reloaded

Diehard Matrix fans start drooling - a chest of drawers and headboard finished in Resene Super Gloss airbrushed with Matrix figures awaits!

Artist: Erika Armstrong

your name here

If you would like your next project to appear in the Resene News or on the Resene website in the Products in Action section, complete a Resene News submission form and send it in to Resene Head Office with photographs of the nominated project. Copies of the submission form are available from your local Resene Representative or ColorShop, or call 0800 RESENE (NZ) or 1800 738 383 (AUST) for a copy. To be eligible for inclusion the majority of the project must be completed in Resene paint.

Brushstrokes

catwalk on walls

Building on the success of the last Karen Walker collection, the partnership between fashion house and paint house continues with the second Karen Walker Collection being launched.

A tailored blend of most of the hues from the original collection, the new collection pushes the boundaries out to lavenders and Te Henga inspired hues embued with names such as **Weathered Blue** and **Cliff Face Grey**. The new collection includes 42 complex hues, each carefully crafted to give effortless mix and match options yet strong enough to work in isolation if simplicity is sought. Oozing creative design and confidence, the collection is no fuss, no frills; just stylish distinctive colours that you can personalise to suit your individual style.

Specifying the new hues is easy with samples of the Karen Walker range available in testpots, A4 drawdowns and the large 10cm x 6cm self-adhesive samples.

Combining the strengths of two truly Kiwi brands, decorators can buy the latest Karen Walker fashion tinted into their favourite quality Resene paints.

Karen Walker colours are available exclusively from Resene ColorShops nationwide. Visit the Resene ColorShop nearest you for a copy of the Karen Walker colour chart, or order your copy online at www.resene.co.nz/comn/whtsnew/colordr/order.htm.



stretched

The top 10 of the Resene colour world is dominated by age old favourites **Resene Spanish White** and **Resene Pearl Lusta** jostling for position with the new neutrals such as **Resene Tea**. The **Resene Whites & Neutrals flat chart** developed a few years ago brought together the best of the Resene whites and neutrals of that era.

However, with neutrals more recently evolving through **The Range** collections, the original Whites & Neutrals chart lacks some of the newer popular neutrals such as **Resene Tea**.

A firm favourite of customers, Resene have tweaked the **Whites & Neutrals chart** to incorporate current popular neutrals without detracting from the existing look and feel nor deleting popular existing hues. The new updated Resene Whites & Neutrals chart now features 42 colours, 12 of which are new. In short, all the favourites are still in place joined by even more favourites.

All of the 6 colours deleted from the original chart are still available in testpots and drawdowns enabling you to keep using the colours of your choice regardless of whether they are on the newly updated chart. With the original chart already being a fast mover, the updated version is expected to be snapped up quick-smart.

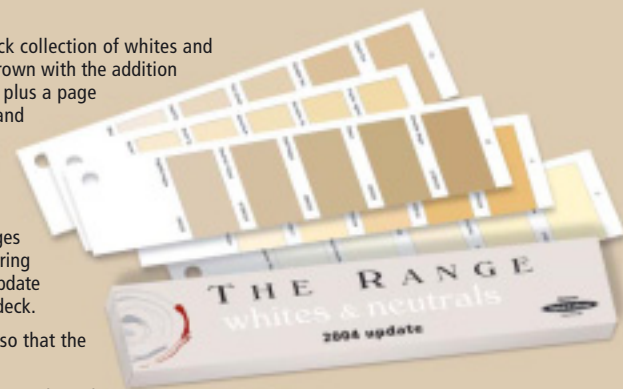


white plus The most extensive fandeck collection of whites and neutrals showcased in **The Range Whites & Neutrals** has grown with the addition of five brand new pages featuring a broad mix of off-whites plus a page of graduated greys. The **Gravel** page has also been revised and now features graduations of this popular hue. The indexing has also been updated to offer two versions - the existing alphabetical listing plus a **new** listing that lists the colour and its graduations together for quick reference.

The new fandecks being collated will feature the new chip pages and indexing. Those with the existing fandeck simply need to bring a copy of it into their local Resene ColorShop and request the update set, which will be provided free of charge to those with a fandeck.

The brass screw of the fandeck is designed to be unscrewed so that the new pages can be added with ease to give the full collection.

The full collection is 195 of the most popular whites and neutrals with graduations of a selection of hues. The in-store colour libraries and testpot collections have been updated to include the recently added hues allowing you to easily access the colours you need for your project. So when whites and neutrals are on your shopping list, make sure you consult **The Range Whites & Neutrals**. Copies are available from Resene representatives nationwide or may be purchased from Resene ColorShops and Resellers.



testing time

From humble beginnings in 1999, **The Range** collections have continued to evolve. Initial usage suggested that the previous **The Range** would be discarded when the new collection became available. This theory was proved wrong with most blending hues from the various **The Range** collections to bring together the desired colour scheme.

This mix and match process has led to added demand for samples from the older **The Range** collections. While we have always had drawdowns in the older colour ranges, many would have found it difficult to source the older testpots. This has now changed with all **The Range testpots** available for ordering - to order the colour you need simply contact your local Resene ColorShop or Reseller and they can order in your favourite testpot for you.

All ColorShops will hold testpots of two **The Range** collections in their store - the current range and the previous range, providing easy access to testpots for the most commonly used ranges. And if you need testpots from earlier **The Range** collections your Resene ColorShop and Reseller staff will be more than happy to order them in for you.

single status

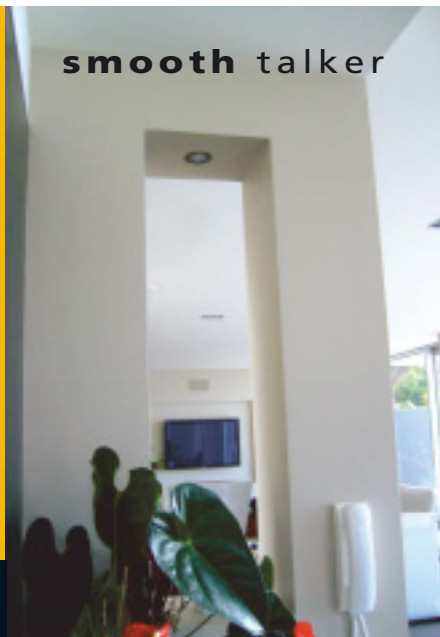


Simplifying jointing and coating systems demands constant attention from Resene technical staff whom have developed and extensively tested a new jointing compound that can be used in place of Resene Jointflex A and B on Harditex joints.

New Resene Jointflex E is a single pack elastomeric product that is ready to apply straight from the pail. With no need to measure mix ratios, creating smooth joints has never been quicker or easier. Resene Jointflex A and B may be substituted for Jointflex E, or vice versa, depending on contractor preference.

See updated Product Data Sheet D806 for full technical information. Copies available from Resene ColorShops and Resellers or visit www.resene.co.nz/archspec/datashts/d806.pdf.

smooth talker



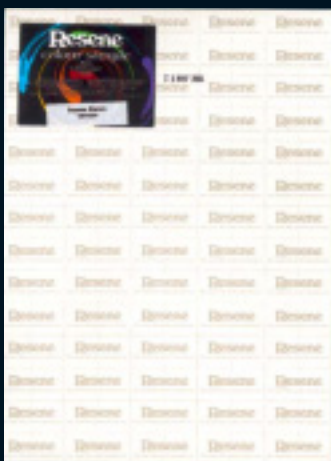
The highly sought after Level 5 paperfaced plasterboard finish is now easier to achieve with the development of **TUFF-HIDE®**, a spray applied high build, single step coating that outperforms the traditional system of conventional skim coating, joint compound and primer coat.

Launched by USG Australasia and carefully formulated for interior applications over GIB® plasterboard or GIB® Rocklinings, TUFF-HIDE®, is designed to minimise surface imperfections in critical light situations. Once cured, the coating is hard and durable, perfect for overcoating with the recommended **Resene Zylone SpaceCote** or **Resene Lustacryl** topcoat systems. Ideal for use in GIB® Toughzone areas combining aesthetic appeal with built in damage resistance.

TUFF-HIDE® is available to approved applicators only through selected Resene ColorShops, giving customers assurance that the product will be applied as intended by its formulators to maximise the finish and performance qualities. For more information contact your Resene representative or USG Australasia on (09) 636 3680 or email info-anz@usgi.co.nz.

squared off

With most specifiers now preferring Resene drawdowns to all other colour samples, these samples are increasingly being cut up for inclusion on colour boards and the like. At the request of specifiers completing our **The Range** survey and to save the need to find a ruler and pen to mark out an area to cut, a new grid has been added to the back of the drawdowns. As we run out of the old card the Drawdowns Department will start printing onto the grid printed cards. These will be seen first on the newer colours and on old colours as existing stocks run out. While it will take some time for all stock to change to the new drawdowns with grid pattern, the most popular colours will be the first ones to change.



Resene have for a considerable time been slowly but steadily working towards a recovery programme to take back unwanted paint and paint packaging from consumers, recycle materials where possible and responsibly dispose of the rest to minimise the impact of the environment. This service sits well with the Resene Environmental Choice approved product range and Resene's continued efforts to minimise the impact products have on the environment.

The groundwork has paid off culminating in the 6 month **Resene Paintwise Programme** based at the Wairau Park ColorShop on Auckland's North Shore.

This store was selected as the hub as the North Shore City Council were the first to introduce kerbside recycling and the ColorShop itself is well sited for easy access by all North Shore residents. The Resene Paintwise programme invites consumers on the first Sunday of the month to bring back any brand of unwanted paint and painting packaging free. Returned materials are then sorted, cans recycled, good quality paint diverted to community groups and the remainder responsibly disposed of. With the North Shore City Council and the Auckland Regional Council lending their support to this project, North Shore garages should be a little less cluttered in the future. For further information on Resene Paintwise visit www.resene.co.nz/paintwise.htm



Greater Wellington Regional Council and Resene have formed a partnership to educate households to avoid tipping paint or paint washing water in stormwater drains.

"We're saying to householders, you've made your home look beautiful, but don't ruin the homes of others. Your paint and washing water can poison the water where fish and other creatures live," said Margaret Shields, Chairperson of Greater Wellington.

"Many people don't realise that stormwater drains are designed for rainwater only. Stormwater flows largely untreated into our streams, rivers and out to sea."

Greater Wellington and Resene have placed an innovative 'paint swatch' brochure in the Greater Wellington Resene ColorShops encouraging households to clean paintbrushes in the laundry sink or in a bucket that is tipped on the garden.

Be the Difference is Greater Wellington Regional Council's programme to involve individuals and households in protecting the environment by taking personal responsibility for their actions. Be the Difference members will receive information packs three times a year, giving advice and tips on how they can protect our environment and live a more sustainable lifestyle. Over 5500 residents joined the programme within 4 weeks of launch. Residents can join Be the Difference at any time at www.bethedifference.gw.govt.nz or by completing a sign-up form available from the Greater Wellington Regional Council.



flower power



With flowers and plants in rapid grow mode for the annual Ellerslie Flower Show it seems an opportune time to showcase the ASB Discovery Marquee, the pride and joy of the 2003 show. Incorporating a waterfall, ice caves, murals, a moat and a pleasure dome, one shouldn't expect to see this garden in anyone's backyard. Thousands of feet trod the pathways through the garden to admire the contrasting elements and the rainbow of paint colours. Coloured and protected by hundreds of litres of Resene paint, hues of **Resene Modular Green** (metallic green), **Resene Endeavour** (blue), **Resene Broom** (yellow), **Resene Resolution Blue** (blue), **Resene Nero** (near black), **Resene Gold Dust** (metallic gold), **Resene Deep Koamaru** (deep blue) and **Resene Atlantis** (green) dominated the view combined with other colour features. With lush carpets of flowers, exquisite palms and the clever

juxtaposition of elements, the garden was the unanimous highlight of the 2003 show. A blooming success.

striking gold



Resene has struck gold recently winning a Gold Award in the 2004 Wellington Gold Awards beating popular contenders such as Whittakers Chocolate for the top honours. Just goes to show that perhaps watching paint dry isn't so boring after all.



oops! The extensive Auckland District Health Board Auckland Hospital Redevelopment was a **joint venture** of the two architectural practices, Jasmx and McConnel Smith and Johnson, with the name of Jasmx / MSJ, not a sole Jasmx project as reported previously.



Incorrect Mailing If you are receiving multiple mailings or you would like us to change your mailing details, please call 0800 RESENE (NZ), email us at advice@resene.co.nz or fax 04-577-0664 (NZ) giving the current address where you are receiving mail and the change/s required.