

Resene

NEWS

Resene - the paint the professionals use

Resene Paints Limited In New Zealand: PO Box 38 242, Wellington Mail Centre In Australia: PO Box 785, Ashmore City, Queensland 4214
In New Zealand call 0800 RESENE (0800 737 363) In Australia call 1800 738 383 Visit our website www.resene.com or email us at advice@resene.co.nz

too cool for school



Situated in a new subdivision in Western Heights West Auckland, the newly constructed Summerland Primary School in Summerland Drive flies in the face of the westie stereotype. In a departure from the black and muted themes of the westie colour palette, the bold use of bright, vibrant hues makes this new school a community focal point and an excellent stimulating work and play environment for children and staff.

The local community desired a school they could feel proud of, that visually fitted into the neighbourhood of new, predominantly middle-class housing while also being instantly recognisable as a school through the use of a slightly outlandish palette.

The exterior colours are bright, used in an adventurous way, but are not over the top. The colours were the primary means of meeting the community objective of creating a school that is not afraid to present itself to the community.

Architect: Carl Thomas, Opus International (www.opus.co.nz)
Project and Construction Manager: Arrow International (www.arrow-projects.com)
Painting Contractor: Terry Cope, Universal Décor
Resene: Bryce McDermott, West Auckland Branch Manager, Henderson ColorShop

This use of colour complemented the Architect's desire to design a school that students thought of as a great and exciting place to be; a fun place that could never appear intimidating.

An extensive palette of 21 colours was specially colour matched for this project in a range of Resene finishes including Resene Sonyx 101 (semi-gloss acrylic), Hi-Glo (gloss acrylic), Zylone Sheen (low sheen acrylic) and Lusta-Glo (semi-gloss enamel).

Titan boards and a selection of weatherboards adorning the main wall areas have been treated to a Resene Sonyx 101 semi-gloss acrylic finish. Galvanised steelwork has been primed with Resene Galvo-Prime and topcoated in Resene Hi-Glo for a maximised high gloss finish. With a scheme this vibrant, dull school days are a relic of the past.

shake

Events in the Whangarei Town Hall in Bank Street, Whangarei are safer for all with recent work undertaken to bring the building up to earthquake standards. Following this structural strengthening the exterior has been repainted to restore the heritage building to its former glory. Resene Sonyx 101 semi-gloss acrylic and Resene Hi-Glo gloss acrylic were used on the exterior substrates of timber, galvanised metal work and cementitious surfaces in a mix of heritage hues for a durable, easy clean, exterior finish. Resene Super Gloss completes the exterior vista imparting a high gloss sheen on exterior timber joinery.

Fully quake and weather proofed, this Town Hall will continue to be the home for public events and forums for many years to come.

proof



Architectural Designer: Ian Butt, Butt Design
Colour Consultant: Carolyn Duxbury-Woods
Painting Contractor: Trevor Ujdur, Tru Colours
Resene: Russell Pamplin, Northland Branch Manager

The Bayfair Shopping Complex in Mt Maunganui has been treated to a four stage extension and redevelopment programme to provide larger format stores, including an extended Countdown and new Farmers store, new parking facilities and upgraded mall options for all Bay shoppers at an estimated total cost of \$40 million.

A sizeable project by anyone's definition, thousands of square metres of substrates were coated in the path to completion. 6,178 square metres of primarily Harditex used in the extensions were finished with a sealed Resene Jointflex jointing system, followed by Resene X-200 Waterproofing Membrane, a textured coat of Resene Resitex Medium and a final topcoat of Resene Lumbersider satin acrylic tinted as required to fit the project colour scheme.

A further 5,166 square metres of interior and exterior concrete substrates including tilt panels, beams and columns were coated with an adhesion promoting seal coat of Resene Smooth Surface Sealer followed by Resene Thixalon 5 textured coating and a finish coat of Resene Lumbersider.

Having coated 12,000 square metres, a further 5,908 square metres of steel beams, braces and stairs required a Resene Engineered Coatings Systems specification to provide maximum protection to these rust prone areas.

Steel substrates were spot primed with Resene Armourzinc 120 organic zinc rich primer, followed by a full coat of Resene Armourcote 510 high solids epoxy and a Resene Uracryl 403 acrylic polyurethane gloss topcoat.

Just to make the painting contractor's job a little more challenging, a unique wave design was applied to the exterior of the Farmers building, transforming the bland wall area into the ideal themed wall for a byside shopping experience.



shop 'til you drop



Painting Contractor: Dave Mclean, GMR Holmac Ltd Tauranga (Carpark Building, Farmers and Mall Refurbishment)
Resene: Paul Wootten, Waikato Branch Manager; Chris Heal, Auckland Architectural Services Representative; Faye Philp, Mt Maunganui Sales Representative

medically fit

For the complete refurbishment of the Hutt Valley Hospital Community Health Building in High Street, Lower Hutt paint systems and colours were selected for their soothing good looks and easy clean, low odour qualities.

With this in mind, exterior walls were finished in Resene Sonyx 101 semi-gloss acrylic in a calming palette of Resene Ghost (soffits), Comet (spandrels), Black Marlin (columns, outer frames, window sills), and Black White (main wall colour, veranda roof). Interior and exterior steel windows were coated in Resene Super Gloss aluminium metallic finish to reinstate the original clean metallic look.

Resene Zylone Sheen low sheen acrylic and Resene Lumbersider satin acrylic were used extensively throughout the interior, complemented by highly durable waterborne enamels Resene Enamacryl and Resene Lustacryl. All interior paint systems were specially coloured matched to Swinson wallcovering colours.

Cool, calm and collected, just the way every medical facility should be.



Architect: Mark Marinovich, Stuart Gibson, Stephanie McElwee, Meritec (www.meritec.org)
Building Contractor: Vinay Ghandi and Sea Pont, Arrow International
Painting Contractor (exterior): Nigel Hall Decorators
Painting Contractor (interior): RBL Limited
Resene: Andy McDonald, Wellington Architectural Services Manager



time out

Artist: Bill Harris

Interior Decorator (Concept): Marianne Gailer, Interior Design and Colour

The TelstraClear Communications Call Centre at Smales Farm in Auckland is a fast paced target-driven workplace. With literally thousands of calls to answer in any given day, staff are relentlessly exposed to potentially debilitating stress. Recent refurbishment activity has seen the introduction of a theme for the open plan office. With a New Zealand native bush scene mural handpainted using a selection of native



lead act

Interior Designer: Rachel Buxton, Interiors etc
Resene: Chris Heal, Auckland Architectural Services Representative

After 10 years of neglect by tenants, this 1920's bungalow has been dramatically transformed to a feast for the senses employing a seductive palette of 13 complex hues carefully layered with texture and metallic finishes.

The dining room is a showpiece of innovative blending, with Resene Zylone Sheen tinted to Resene Elephant (deep green blue) applied to the upper half of the walls. The lower portion features Resene Enamacryl Metallic tinted to Resene Klingon (dark blue metallic) in asymmetrical stripes, giving a room, classical in bearing, a rich contemporary edge.

The Resene Sandstone (taupe-grey) entrance leads into the living room with its Resene Merino (off-white) walls, a relaxing neutral palette deeply contrasting to the dramatic dining room. The use of an identical paint effect on the curtain rods and pendant light fittings provides continuity between the seemingly polar opposite rooms.

The kitchen holds the same appeal with three walls of Resene Parchment (light beige neutral) and a ceiling of Resene Sea Fog (cool white) dramatised by a polyurethane protected Resene Mondo (brown-beige) finish on the tongue-and-groove feature wall.

Not to be outdone, the reflective Resene Enamacryl Silver Aluminium maximises light in a traditionally dark bathroom.

Each room has been bestowed with a personality of its own; together they are the perfect stage for urban life.

From an old villa variously employed for office and retail, the new 'Taste' restaurant/café in Kapiti has been born. The combination of extensions and a complete interior repaint are responsible for the transformation into a modern, tasteful, slightly funky, ambient restaurant cum café.

A unique combination of popular Resene finishes and colours on the main wall areas have been used to create a space with interesting dimensions accentuated by a well planned lighting scheme to give subtle highlights. The main wall areas have been coated in Resene Sandtex, a Mediterranean style sandstone texture, softened with a coat of Resene Lumbersider satin acrylic and topcoated in two coats of Resene Enamacryl Metallic tinted to Proton (light green metallic).

An identical paint system with a palette of three Resene metallics was used in the washroom areas. In keeping with the tasteful interior, two food inspired colours, Resene Tuna (deep grey) and Resene Marzipan (burnt orange), were used on the bar and window areas.

The sensuous tactile combination of texture and metallics ensures that Taste Restaurant is a sensation for patrons' eyes as well as their taste buds.



seasoned to taste

Colour Consultant: Heather Thorley, Colour Options Ltd
(email: htcolouroptions@hotmail.com)
Designer: Gavin Thorley
Owners: Justin and Nicola Lemmens
Resene: Richard Chandler, Horowhenua Branch Manager

stop the press

Colour Consultant:
Jill Ambrose Interiors
Painting Contractor: Ambrose
Painting Services
Resene Australia: Harold
Murray, Architectural Sales
Representative



Resene: Wairau Park ColorShop, Drawdown Service

The full interior and exterior refurbishment of the Sunshine Coast Daily Newspaper office in Maroochydore, Queensland, proffered a challenge to the colour consultant charged with co-ordinating bright active colours in an environment that has traditionally dealt with the black and white issues of day-to-day newspaper production.

Inspired by the Resene Total Colour System and an imagination brimming with new concepts, the finished scheme has resulted in a fresh new workplace environment bearing little resemblance to its monotone predecessor.

Winning the accolades of staff, energetic Resene Citrus (limey green) and Resene Lusty (deep red) were used in the reception area to provide a high energy warm persona, joined by a combination of strong blues, lime greens and reds throughout the remainder of the complex.

With daily newspapers to deliver, there was no time for major disruptions. Refurbishment work took place around the daily operations of the newspaper with disruptions minimised through the speed, ease of application, low odour and coverage characteristics of the selected Resene Zylone Sheen low sheen acrylic and Resene Enamacryl gloss waterbased enamel finishes.

With colours like Resene Lusty adorning the walls, 'hot' off the press takes on a whole new meaning.

hues tinted into Resene Lumbersider spanning an impressive 22 metres, staff can now enjoy the natural break between their working space and their time-out space. Focusing on the peace and tranquillity associated with long bush walks, the mural is a clever, yet subtle, method of tempering the stressful work environment and providing continuity throughout the open space.

e-i-e-i-o

You've heard of the joys of country living... now you can really get back to the good life with a new stylish range of holiday homes by Red Shed. Ideally suited for the Martinborough wine district and nationwide lifestyle blocks, the first home completed in Paraparaumu, Wellington is aptly named the "Martinborough Barn".

Incorporating diverse substrates ranging from strand board flooring and Macrocarpa beams to the ever popular Gib. Board, Resene paint systems and vibrant colours feature predominantly in this modern twist on the iconic barn.

The two interior feature walls of Resene Zest (yellow orange) and a Resene colour match to Melteca Snapdragon grab attention from the predominantly neutral Resene Tahuna Sands (green toned cream) walls. The interior is finished with white Resene Super Gloss enamel on interior trim and Resene Waterborne Woodsman on exposed joists and strandboard for a protected, yet natural, timber finish.

The exterior timber façade has had its natural rustic beauty preserved with an attractive finishing system of Resene Waterborne Woodsman, and Resene Super Gloss enamel tinted to the complex beige Resene Tea on trim and joinery.

The Martinborough Barn is the perfect way to sit back with a fine wine and enjoy the lifestyle of Martinborough no matter where you live.

Design and Construction: Sharon Weir & Darren Hunter, Red Shed (email: sharon.darren@paradise.net.nz)
Owner: Angela & Peter Brazier
Painting Contractor: Quality Painters (Paraparaumu)
Resene: Richard Chandler, Horowhenua Branch Manager



for the fans

Responsible for seating thousands of eager fans, the grandstand seating at the hallowed ground of Queensland Rugby Union at Ballymore Brisbane was in need of a little TLC to ready it for the next season.

With a limited turnaround time available, timing was critical driving the selection of Resene waterbased products for their fast dry and quick recoat times. Resene Quick Dry Acrylic Primer Undercoat was selected for its outstanding adhesion to old existing paint and easy sanding properties topped off with two coats of Resene Enamacryl waterbased gloss enamel to provide a tough, durable coating that will stand the test of time.

Painting Contractor: Ben Osbourne Painting
Resene Australia: Harold Murray, Architectural Sales Representative



The new Chatsford lifestyle community boasts 226 households with unparalleled major amenities, such as an indoor heated pool/spa/sauna gym complex, two community centres, bars, workshops, a tennis court, petanque ring... all situated on a 25 acre site in Doon Street on the outskirts of Mosgiel.

A vibrant established community offering a quality flexible lifestyle, Chatsford is owned by its residents, with each having freehold title to their home and collectively sharing in the ownership of community amenities. Choice extends to a range of six spacious townhouse designs with numerous potential variations so that practically no two homes are the same.

The sheer size of this project necessitated a diverse range of paint systems. From Resene Lumbersider satin acrylic on the concrete foundations, Resene Woodsman wood stain on exterior trelliswork, Resene Enamacryl gloss waterbased enamel on soffits and gable ends to Resene Vinyl Etch, Resene Enamel Undercoat and Resene Super Gloss on the galvanised lampposts, few surfaces have been left untouched by paint.

The interior paints a similar story with Resene Broadwall Acrylic Wallboard Sealer and a topcoat system of Resene Lumbersider satin acrylic used throughout broadwall areas. Where lining paper has been used the primer was changed to the all purpose Resene Quick Dry Acrylic Primer Undercoat. Interior trim and joinery and all wet areas were finished in a topcoat system of Resene Lusta-Glo semi-gloss enamel for a fresh easy clean surface.

With 25 acres of community, Chatsford has well and truly put itself on the map.

Architect: RJ Oliver
Painting Contractor: Gordon McQueen
Property Developer: Chatsford Developments Ltd (www.chatsford.co.nz)
Resene: Mark Power, Dunedin Sales Representative




the good life



The Resene News now extends beyond these printed pages



Check out more projects online at www.resene.co.nz/archspec/products/index.htm



all that glitters

The palette of Resene Sector (metallic tan), Resene Digital Blue (metallic blue) and Resene Pohutukawa (deep red) adds a futuristic feel to complete this stunning interior.
Colour Consultant: Christine Olsen
Painting Contractor: D&M Munro Painting Services
Resene Australia: Jason Osborne, Architectural Sales Representative



the 19th hole

The muddy neutral Resene Tea backdrop is invigorated by Resene Cab Sav (burgundy-brown) feature areas.
Building Contractor: Miden
Colour Consultant: Helen M Fritchley Interiors
Painting Contractor: Don Allen & Co
Resene: Faye Philp, Mt Maunganui; Tauranga ColorShop



village folk

Epsom Village in Ranfurly Road, Auckland has recently been treated to a full exterior repaint using Resene X-200.
Colour Designer: Adrienne Dodd Interior Design
Owners: Geoff and Anna Thorpe
Painting Contractor: Target Painters and Cheah
Resene Representative: Jeremy Croft, Architectural Consultant; Meryl Southey-Brown, Colour Consultant



energised

The introduction of strong contrasting hues draws attention to the previously outdated building.
Painting Contractor: John O'Donnell, RBL 2000 Ltd
Resene: Ben Freen, Wellington Trade Sales Representative; Sophie Reader, Resene Kilbirnie



good as old

Resene Zylone Sheen low sheen acrylic in Resene Ce Soir (purple) and Resene Resolution Blue (bright blue) bring the brilliance of colour into the interior.
Architect/Owner: Barry Kirby
Building Contractor: Terry O'Connor Builders
Painting Contractor: Ben Osborne Painting
Resene Australia: Harold Murray, Architectural Sales Representative



on top

The first Australian McDonalds roof repaint has been completed in Brisbane using Resene Hi-Glo Lina Red topped with Resene Hi-Glo UVS Clear.
Resene Australia: Harold Murray, Architectural Sales Representative

your name here

If you would like your next project to appear in the Resene News or on the Resene website in the Products in Action section, complete a Resene News submission form and send it in to Resene Head Office with photographs of the nominated project. Copies of the submission form are available from your local Resene Representative or ColorShop, or call 0800 RESENE for a copy. To be eligible for inclusion the majority of the project must be completed in Resene paint.

Brushstrokes

paint colour cues for 2003

Building on the success of previous Ranges, Resene has just released **The Range 2003** - a collection of 150 classic and contemporary colours and 5 metallic and textured specialist finishes designed for the year 2003. The Range 2003 is based on international colour predictions that are tailored to suit our lifestyle and environment.

The Range 2003 is a fusion of complex colour opposites. Out of the box thinking gives a paradoxical mix of evolved favourites mixed with new uplifting energetic full chroma hues demanded by the young at heart. With complicated work schedules, leisure time is focused on maximum fun, maximum refreshment. A splash of fun, playful brights in between restful neutrals provides much needed breathing space. Strong primaries are discarded in favour of their more complex counterparts giving new twists on old favourites.

Colour trends will focus on developing a soft human connection to offset the increasing invasion of sleek technology. Blending extremes of technology with nature, and retro with contemporary, provides balance. Edgy fashion is teaching us to be brave in our colour choices to develop seemingly incongruous schemes through the use of dramatically different colours.

Colour has become multi-dimensional with the increasing prevalence of pearlescents, metallics and texture. Materials and colours are blended so that the texture, pattern and colour are virtually indistinguishable from one another. Light influences our perception of colour. Pearlescent translucence and transparency allows colour to radiate from within. The influence of orange sees bronze, such as Resene Bullion, and copper, such as Resene Copper Fire, becoming popular.



Fluid motion prevails. Nature continues to inspire colour direction but the focus has moved from earth bound colours to greens and blues. Whether watery, atmospheric or dependable, blues are invigorating yet familiar.

The satiating fusion of colour and finish in The Range 2003 offers something for everyone. Whether an enduring transformation or a short-term extravagance, the painted surface is a versatile living canvas to nurture and develop colour desires.

Get your copy of The Range 2003 from your Resene representative or Resene ColorShops nationwide. For more information on 2003 colour trends, check out www.resene.co.nz.



Range 2003 samples are available in A4 drawdowns and 100mm x 60mm adhesive labels via the Resene direct drawdown order - contact your representative for more information.

we're a hit



The Resene website has been awarded a Number 1 Hitwise Award in both July to Sept 2001 and Jan to March 2002 for the Business and Finance - Manufacturing/Industrial category. A Hitwise Award is given to the most visited website in each category, so if you haven't checked out www.resene.co.nz get your mouse going and join the thousands taking advantage of our online services.

sublime lime

Lime lovers will delight in the new sublime limes in the Range 2003. A new Yellow 2 tone has been added to the Resene range of tones to achieve the bright limey greens, such as **Wellywood, Tree Frog and Spritzer**, that are new to The Range 2003.

oh to be UV free

Damaging UV light will burn human skin in 10 minutes on summer days, yet exterior paintwork is expected to withstand the relentless UV attack without change. The constant exposure to UV light gradually breaks down vulnerable pigments in the final topcoat resulting in a faded paint finish.

To help protect exterior painted surfaces from colour fade, Resene have launched **Resene Sun Defier UV protective glaze**. Resene Sun Defier is based on a 100% acrylic emulsion for ease of application and maximum life over pre-painted surfaces. Formulated with UV absorbers, Resene Sun Defier filters out harmful UV light, protecting the underlying coloured coats. It is ideally suited for direct application to freshly painted exterior bright organic hues and shades to aid colour retention by protecting these more vulnerable pigments against fading.

Only one coat of Resene Sun Defier over acrylic topcoats such as Resene Hi-Glo or Resene Lumbersider is required for maximum protection against harmful UV light.

See data sheet D502 for further technical information. Data sheets are available online from www.resene.co.nz, contact your representative or visit your nearest ColorShop.



tough stuff

Have you ever sat on a plane enjoying the in-flight entertainment and noticed that you were speeding along at over 500kph with an outside temperature of -50°C? Just minutes before you were sitting on the ground basking in hot summer temperatures of 30°C.

The paint on an airplane must cope with extremes of temperature and wind pressure and stay firmly affixed for a minimum of eight years. With such strict performance parameters, only a few tough paints can make the grade.

Recently Resene Automotive and Performance Coatings supplied paint for the new livery of Virgin Australia's new Boeing 737 400 Series painted in Christchurch. The result is a shiny, colourful paint job that will last the distance and see Resene become truly airborne.

For more information contact Resene Automotive and Performance Coatings on 0800 108 008.



curvy colour

Hannahs in Lambton Quay, Wellington have discovered an inventive use for the new Resene Automotive and Performance Coatings product Kaleidoscope. Adorning the rear curved wall of the shop, the shifting wall of colour is a showpiece that draws customers in to admire the wall and the merchandise displayed within it.

Resene Kaleidoscope is a system manufactured by Resene Automotive and Performance Coatings consisting of a black ground coat and colour shift topcoats. Call 0800 108 008 for more information on this dazzling finish.



Property Owner: Hannahs
Resene: Dave Clarkson, Central Project Services Representative

child's play

The Resene Colour Match system is the ideal way to handcolour in your next colour scheme using the collection of 102 Faber Castell pencils and the Metallics pencil range. To create the desired Resene colour, simply look up the colour pencil recipe you require or for more information to get the best out of your pencil set.

To make using your Resene Colour Match pencil set even easier, the colour pencil recipe book is now available online from the Resene website. Simply go to: www.resene.co.nz/archspec/pencils/index.htm to find the colour pencil recipe you require or for more information to get the best out of your pencil set.

For those who have missed out on the joys of handcolouring, Resene Colour Match pencil sets can be ordered from any Resene ColorShop or online from the Resene website for \$175 inc GST. This price includes the full set of Faber Castell pencils, a set of Metallic pencils, a wooden pencil stand and a book with tips on use and recipes to help you achieve your desired Resene colours. With a Resene Colour Match pencil set, you'll be the envy of your children.

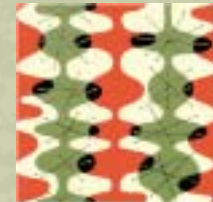


paper place

Inspired by the 1950's, *Bridey Farrell* has released a range of three handcrafted wallpapers in two colourways. The designs are silk screened onto a paper base imported from Germany using Resene Lumbersider satin acrylic.

The three designs bask in their singleminded themes masking the extensive refinement required behind the scenes to get them to their current state.

To view larger swatches of the range, visit selected Resene ColorShops or www.retrowallpaper.com.



1A Resene Winter Hazel, Fire, Highball, Sambuca



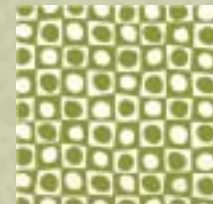
1B Resene Hint of Grey, Juniper, Wild Willow, Sambuca



2A Resene Wild Willow, Hint of Grey, Juniper, Sage, Fire, Sambuca



2B Resene Winter Hazel, Hint of Grey, Napa, Sage, Tamarillo, Sambuca



3A Resene Hint of Grey, Highball



3B Resene Fire, Fuel Yellow

hide de hide

New Resene Acrylic Undercoat is an easy brushing, quick, hard drying undercoat with exceptional flow and sanding characteristics. While specifically designed for maximum benefit under acrylic enamels, such as Resene Enamacryl and Resene Lustacryl, Resene Acrylic Undercoat tinted to the correct colour is ideal for use under a wide range of waterbased and solventbased topcoats to improve the hiding of the paint system.

For better hiding, Resene Acrylic Undercoat tinted to the correct colour can replace one of the topcoats. A paint system using Resene Acrylic Undercoat would typically consist of one coat of Resene Quick Dry Acrylic Primer Undercoat, one coat of Resene Acrylic Undercoat tinted to the correct colour and one coat of the selected topcoat. Resene Acrylic Undercoat minimises the tinter levels required giving improved water resistance, drying and curing properties and stain blocking resistance.

Resene Acrylic Undercoat gives all the hiding benefits associated with Resene Enamel Undercoat combined with the advantages of being waterbased, such as easy clean up in water, lower odour and therefore the desirability of using it with both acrylic and enamel topcoats. Suitable for interior and exterior use, it can be used in most paint systems as a substitute for Resene Enamel Undercoat.

See Data Sheet D404 for further technical information. Data sheets are available online from www.resene.co.nz, contact your representative or visit your nearest ColorShop.



top job

Steve Joseph has been appointed General Manager of Altex Coatings Ltd in the company's Tauranga Head Office. Mr Joseph has headed the company's financial management team since he joined the company over 14 years ago.

in luck

Thankyou to everyone who completed our feedback forms - you have helped us formulate some new ideas for the future. The two lucky winners of the \$500 travel prizes were Phil Lewis and Tony Besley both of Auckland.

sold only when cold

Resene have recommenced selling Resene Wintergrade Lumbersider and Wintergrade Hi-Glo in a selected colour range over the 2002 winter period.

Resene Wintergrade Lumbersider and Wintergrade Hi-Glo have been produced and used successfully on a variety of projects since 1999 when a cold temperature cure has been required. Resene Wintergrade products can be applied in temperatures as low as 2°C and in ideal conditions the recoat time is just 2 hours.

Both products are easy to apply, as evidenced by the completion of an Auckland carparking building using 6000L of Wintergrade Lumbersider last winter.

For further technical information refer to Data Sheet D34a and D31a and Architects Memo #62 - Cool Coalescings. To order copies, simply call 0800 RESENE or access the information online at www.resene.co.nz.



Incorrect Mailing

If you are receiving multiple mailings or you would like us to change your mailing details, please call 0800 RESENE, email us at advice@resene.co.nz or fax 04-577-0664 giving the current address where you are receiving the mail and the change/s required.