

# Resene

## NEWS

Resene Paints Limited, P.O. Box 38 242, Wellington Mail Centre. Tel +64-4-577 0500, Fax +64-4-577 0664  
Internet Home Page <http://www.resene.co.nz> Technical Advice 0800 Resene (737 363)

**W**ith its Environmental Choice range of paints, Resene Paints is proud to carry the environmental banner. As a product range, paints do not easily fit into a 'green image' because paints' first and foremost job is to have an impact on the environment.

Paint is designed to prevent the bio-degradation of timber; protect concrete from the attack of carbon dioxide and prevent the natural oxidation of metals.

"It is not difficult to make paints 'green' if one loses sight of their main purpose," technical director Colin Gooch says.

"Resene Paints' philosophy is simple. Firstly, to achieve the protection parameters required and secondly to reduce the environmental impact paints may pose to people's health and the environment."

The credibility of Resene Environmental Choice comes by meeting the rigorous specifications administered by an independent auditing body - Telarc, now operating under the name of International Accreditation New Zealand (IANZ) with formal endorsement by the Minister for the Environment.

The specification demands on these paints include no lead or any other heavy metals, no formaldehyde and chlorinated solvents and low levels of volatile organic compounds (V.O.Cs).

Resene Paints' commitment to improving the environmental integrity of its paints extends back to the removal of lead in the 1980s. At a time when it was known that paint may cause health concerns, Resene was the first to identify safer paint alternatives.

In May 1996, Resene launched its Environmental Choice range of Environmental Choice paints without compromise on performance, durability or increasing cost.

The danger period for any paint is during application and curing, which can last up to three months. Resene Environmental Choice products give off no toxic substances during this period. Resene Environmental Choice paints have the highest durability that reduces significantly the need to re-coat surfaces and therefore the impact on the environment.

Resene offers a wide range of Environmental Choice products including water based primers, undercoats, top coats, wood preservatives, clear coatings, mastics and specialist coatings for smooth and textured coatings.

patented low odour interior paints and water based enamels. This range virtually eliminates the need to use solvent based enamel paints.

The Minister for the Environment says paint cans carrying the 'big tick' are considered a good environmental choice showing that the product is effective in terms of reduced health risk and environmental impact. To reinforce this position, more than 70 per cent of Resene products comply with the Environmental Programme.

For the first time, New Zealanders can paint an entire building using paints that have an environmental endorsement they can trust. The use of Resene Environmental Choice paints provides a better and safer living environment.

Architects have been leaders in adopting sustainable environmental options and are specifying Resene Environmental Choice paints as a matter of course. Resene Paints is providing environmentally safe surface treatments that are being used extensively in public buildings and sporting grounds.

It's time to make it a Resene Environmental Choice

## environmental choice paints tower over the rest

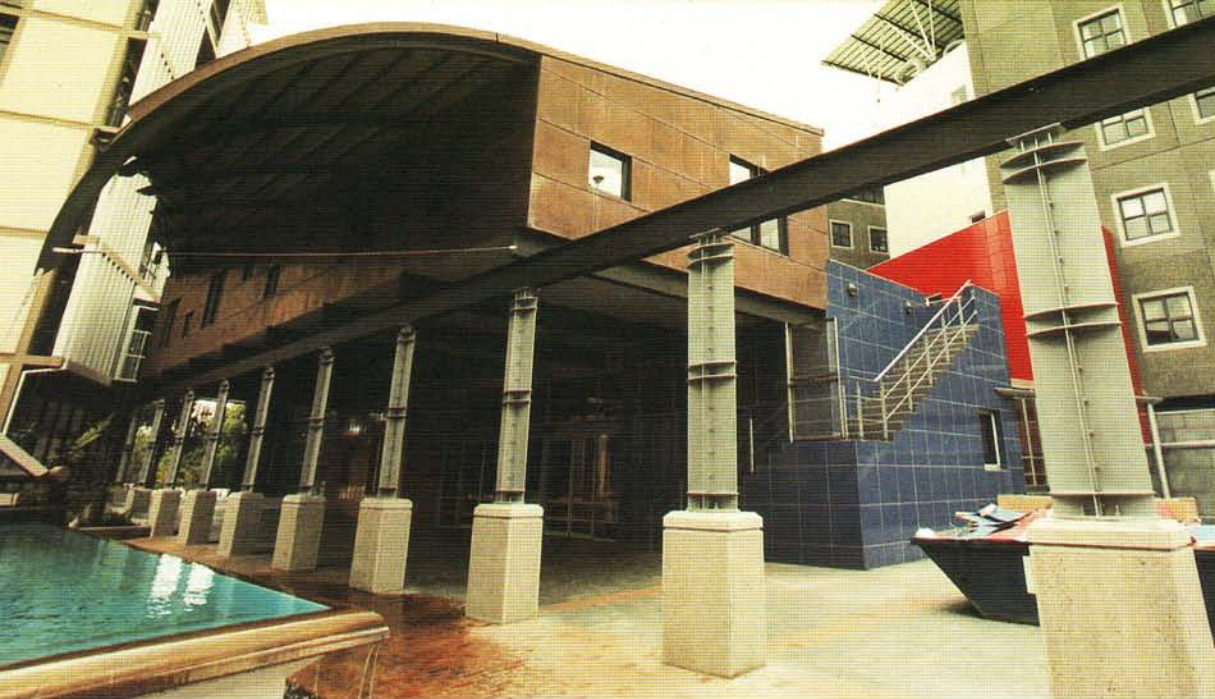
**A**uckland's Sky Tower exudes an air of design confidence with the use of aluminium and concrete cladding and outstanding paint finishes. As with the Auckland casino, principal architect Gordon Moller, of Craig Craig Moller, assisted by Resene architectural manager Rob Lavender, specified Resene Environmental Choice paints which was also a requirement of the client's environmentally-acceptable brief.

"These days you need to take a conservative position on non-aggressive paints where possible," says Mr Moller who is a firm supporter of Resene Environmental Choice paints.

"They are better for people's health and safety with no trade-offs on performance and price," he says. Painting contractors Ray Crawshaw & Son applied Resene Lumbersider to the restaurant's fibreglass walls, Resitex Superfine to the foyer walls and Zylone Sheen in the public stairwell and management offices.

Photograph courtesy of Auckland Sky City Ltd.





The new University of Canterbury Commerce Faculty featuring vibrant colours in Resene Environmental Choice paints.

## a commercial decision

The architects of the University of Canterbury Commerce Faculty building are advocates of the creative use of interior colour while at the same time providing a safe place for students and staff. In developing the colour scheme, Athfield Architects and Vial & Bellerby kept in mind a simple philosophy using warm vibrant red and yellow colours in the south-facing block and a cooler palette of blue, green and white in the north block.

These blocks are aligned to surround a central glazed interior atrium which constitutes the social and functional heart of the building.

"In developing the paint system, the environmental issue was one of the factors taken into consideration along with the desired paint finish and its substrate suitability," Alick Bellerby of Vial & Bellerby says.

Resene Quick Dry Acrylic Primer was used on exposed interior concrete and Gib Board ceilings with Zylone 20 top coats to achieve a durable and dead flat surface.

Resene Broadwall Acrylic Wallboard Sealer was used on Gib Board walls followed by Zylone Sheen or Lumbersider.

"We are very happy with the result, proving that the use of environmentally friendly products does not compromise the architectural intent or surface durability," says Ian Athfield of Athfield Architects.

At the University of Canterbury Commerce Faculty, from left architects Ian Athfield and Trevor Watt of Athfield Architects, Alick Bellerby of Vial & Bellerby, Resene Architectural representative Henrietta Savill and architect Ashley Hide of Athfield Architects.



## good colour with no unpleasant aromas at Te Awa

New freedom has been unlocked for Hawkes Bay artist Pamela White using Resene low-odour paints.

After years of exposure to solvent based paints, Pamela developed an allergy to these in the form of migraine headaches and it appeared as though she may have to give up the painting that she enjoyed so much.

Pamela's doctor suggested that she either stop painting with oil and acrylic odorous paints or wear an industrial mask while painting.

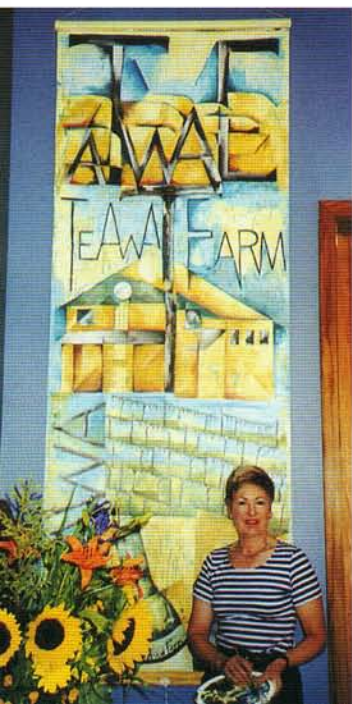
Fortunately, Pamela discovered the Resene low odour paints which "are ideal for mural and banner painting," says Pamela.

"There is no variation of finish, colour or mood which cannot be created with Resene Zylone Sheen and Zylone 20. The paints are also quick drying, which was practical and convenient for me."

Her latest 3.4 metre banner hangs in the reception at Te Awa Farm Winery. This was completed just in time for its official opening in November last year.

While commissions still form a large part of her work, she has been represented in collections throughout New Zealand and in Paris and Athens.

Pamela White and her mural of Te Awa Farm Winery.



no lead -  
no p

Throughout this newsletter to the full and vibrant color Environmental Choice paints. Tachril Houses, designed by C exception to the lively line-up. Here, contrasting shades of used as part of the town house was to use color to differentiate. It was always thought that with bright yellows, oranges and red with adequate opacity, durability commitment to the utilisation of technologies, along with the of lead free formulating means stand old concepts on their head future.

The paint system used by Resene on the exterior rough cast concrete Waterproofing Membrane for



## problem

passing references have been made  
our range available in Resene

Queenstown architect John Blair, is no  
of buildings.

ellow, orange and blue have been  
se design statement. The intention  
iate between the two buildings.

without lead and cadmium pigments,  
eds would be impossible to produce  
ility and economy. Resene Paints'  
of the most modern pigment  
expertise gathered during 30 years  
ns that once again Resene is able to  
eads and offer a bright lead-free-

Macdonald Painters and Decorators  
concrete walls was Resene X200  
followed by two coats of Zylone 20.



Concrete walls in the Auckland Museum Store are juxtaposed by a suspended ceiling and finished in Resene low odour Zylone 20. Enamacryl Water Based Enamel was applied to the interior of cabinets while the wood on the exterior has been treated with Aquaclear Urethane Acrylic Varnish.

## resene passes 'oddy' testing

It is not surprising that Noel Lane Architects, Salmond Architects and Auckland Museum's Conservation Department specified most of the extensive range of Resene Environmental Choice paints for the environmentally-sensitive refurbishment of the Auckland Museum.

Principal architect Noel Lane of Noel Lane Architects says "We selected Resene Paints because of the quality of the product, price competitiveness and the service and backup we receive from Resene staff."

Another reason for the architect's choice was that Resene Environmental Choice paints complied with the museum's conservation requirements.

"Primary concern to the client was to preserve museum objects which required the use of non-toxic building and finishing materials," Mr Lane says.

Cabinetry interior spaces that house many of the museum's priceless artefacts were the most sensitive areas. Selected Resene Environmental Choice paints along with other manufacturers' paint products were put to the 'Oddy' test by Auckland Museum's Conservation Department.

Oddy testing predicts whether materials used in constructing display units are likely to harm the artefacts stored due to the emission of harmful toxins.

"The results showed that Resene Enamacryl Water Based Enamel met the rigorous performance criteria and was subsequently selected for use in creating a safe environment for these precious objects," says Resene architectural representative Lucio Pezza.

This \$50 million interior refurbishment began three years ago and is forecast for completion in December 1999.



Scars On The Heart comprises an exhibition on NZ at war. Gib Board walls have been finished in Resene Zylone 20 in the chosen colour, Burgundy.



QBA's show apartment highlighting its 'styled' colour scheme in Resene colours.

## wild, styled or mild in Cuba

New apartment developments like the QBA Apartments contribute to the vitality that makes the capital a fun city to live in.

The site of QBA Apartments, the former MED building at the top end of Cuba Street, has been purchased by developer Balanced Investments and redeveloped and expanded predominantly into apartments.

QBA Apartments, pronounced 'Cuba', has 55 apartments in stage one of its development with plans to create a total of 75 colourful and lively but affordable living spaces.

Architects Michael Cole of ArcHaus and John Mills

impart a New Zealand flavour to a contemporary design.

In developing the colour schemes for QBA, occupiers can choose from wild, styled or mild Resene decorating systems designed by colour award winning architect John Mills.

The architects, assisted by Resene architectural consultant Mike James, specified Resene Environmental Choice paints throughout the complex as a result of a "growing environmentally-conscious market", says Mr Cole.

Resene Broadwall Surface Prep followed by Broadwall Acrylic Wallboard Sealer and topcoated with Zylone Sheen or Zylone 20 have been specified for the interior Gib Board walls to achieve a level 5 finish.

In the wet areas, Resene Aquapoxy-Water Based Epoxy was used to seal Gib Board walls followed by two coats of Lustacryl Semi-Gloss Water Based Enamel.



House at Tairua makes a significant improvement to the environment.

## european green living

Coastwood Homes on the Coromandel Peninsula was commissioned by the Eder family from Germany to build a Lockwood home in Tairua using environmentally friendly products and finishes.

"In Germany, people are far more environmentally aware," says Mr Eder, who believes that New Zealanders need to be better informed of the health implications in using building materials that contain hazardous substances like formaldehyde and chlorinated solvents.

To meet the environmentally acceptable paint brief, painting contractor Steve Levien, assisted by Hamilton Resene branch manager Gil Wall, specified Resene Aquaclear, a water-based alternative to oil modified varnishes, throughout the interior of the house on Radiata Pine surfaces in both the living and wet areas, with doors finished in Lustacryl Semi-Gloss Water Based Enamel.

"Aquaclear applied by airless spray is far better for us compared with the old oil modified varnishes," says Mr Levien. "Not only does Aquaclear result in a higher film build and guarantees rapid drying and fast recoat times, it is also far more pleasant to use. Resene Aquaclear is a painter's dream come true," he states.

## eco-friendly meets environmentally-friendly

Environmental concern, durability and price were all key factors in choosing Resene paint for the Waitakere City Council Eco-Friendly House, the centrepiece for a number of building developments expressing Waitakere's eco-city vision.

This eco-house demonstrates how a variety of environmentally-friendly and conservation-oriented products can be brought together for the health and well-being of home owners.

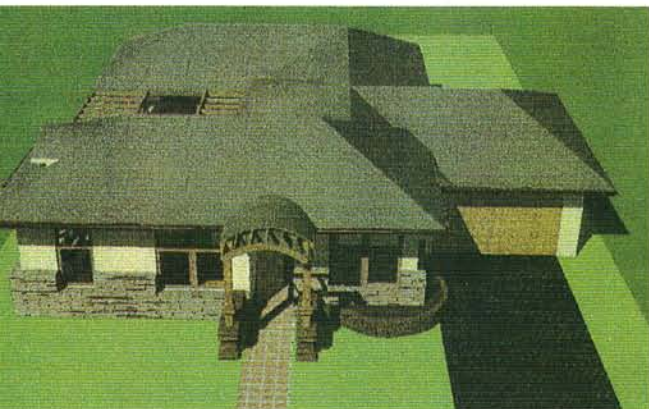
Paint choice was of major importance to this project and "we are delighted to use Resene Paints, one of New Zealand's finest environmentally aware companies", Bob Harvey, Mayor of Waitakere City says. "It's a partnership that will not only give our city's eco-vision a lift but it makes great sense also."

Architect Paul Heather of Green Design, assisted by eco-architect Reinhard Kanuka-Fuchs and Resene architectural representative Rob Lavender, ensures that each of the products used in the house can make legitimate claim to being environmentally preferable.

Construction of the house has recently been completed and painting begins this month. The Resene Environmental Choice paint system specified for the exterior is X200 Acrylic Waterproofing Membrane on solid plaster followed by several coats of Zylone 20.

The interior decoration incorporates Resene Aquaclear to timber areas, Zylone Sheen over Broadwall Acrylic Wallboard Sealer to Gib Board walls and Lustacryl Semi-Gloss Water Based Enamel over Quick Dry Acrylic Primer in the wet areas.

Waitakere's Eco-Friendly House.



Resene News is published by the Resene Paints Marketing Department. For further information about any of the products featured in this issue of Resene News, please contact the Resene Paints Marketing Department, 32-50 Vogel Street, Naenae, New Zealand, Telephone (04) 577 0500, Fax (04) 577 0664. Every effort has been made to ensure accuracy in this publication, but Resene accepts no liability for any errors of fact or opinion expressed herein.

# Resene - the paint the professionals use

This publication is printed on 50% recycled paper.

## the right prescription

Architects are becoming increasingly aware of the necessity to protect and enhance the nation's environment and are turning to Resene Environmental Choice paints.

Chow Hill Architects in Hamilton are no exception. They specified identical Resene paint systems for the alterations and refurbishment of Tokoroa, Taumarunui and Te Kuiti hospitals.

"The key issue with these projects was indoor air quality for patients' health and well-being," says architect Keirin Hoad of Chow Hill Architects.

Strict time constraints were placed on painting contractors G.M.R. Holmac whose responsibilities involved the interior/exterior repaint of Tokoroa Hospital and John Thom who was contracted for the interior/exterior repaint of Te Kuiti and Taumarunui hospitals.

Slick work by the painting contractors, assisted by Resene sales representative Tony Taylor from Rotorua and Resene Hamilton branch manager Gil Wall allowed patients to move back into their wards almost immediately after painting had been completed, without experiencing unpleasant paint fumes.

The interior decoration incorporated Resene Lustacryl Semi-Gloss Water Based Enamel in the wet areas and patient wards and Lumbersider in the corridors, with the exterior sealed with X200 Waterproofing Membrane followed by Sonyx 101.

A palette of warm colours brings life into the hospitals' original monochrome interior while the exterior steps out in a smart earthy bluey-green.



Te Kuiti Hospital transformed.



Water Based Paint  
Licence No 1296003