

★★★ Difficulty level ★ easy ★★ moderate ★★★ challenging Fun with furniture with Mark Rayner – 19

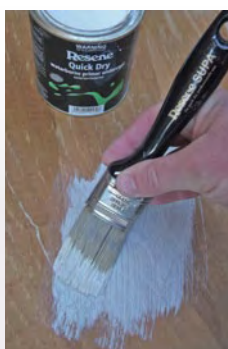
You will need:

- Clean cloth
- Wire wool
- Old wooden side table
- Paintbrush
- Resene Aquaclear satin
- Resene Quick Dry
- Resene testpots in Resene Centre Stage (x2) and Resene Colonial White (x2)
- Sandpaper



Step one

Lightly sand the wooden table with sandpaper to provide a 'key' and wipe off any sanding dust with a clean cloth.



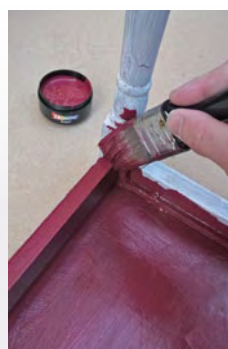
Step two

Apply one coat of Resene Quick Dry to the table top and underside.



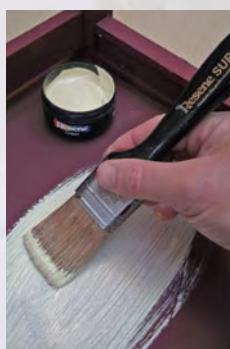
Step three

Apply one coat of Resene Quick Dry to the table legs. Allow two hours to dry.



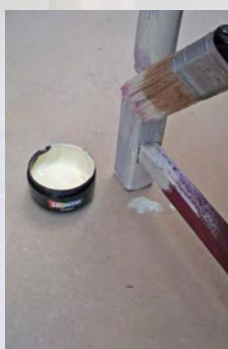
Step four

Apply two coats of Resene Centre Stage to the table, allowing two hours for each coat to dry.



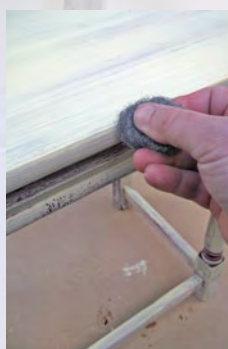
Step five

Apply one coat of Resene Colonial White to the table top and underside, lightly brushing in the direction of the grain to allow some of the base colour to show through.



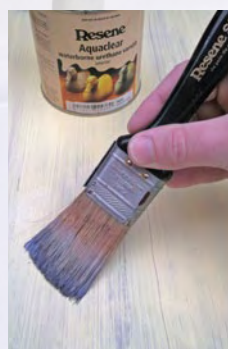
Step six

Apply one coat of Resene Colonial White to the table legs. Again, apply the paint lightly, allowing some of the base colour to show through, especially around any carved areas. Allow two hours to dry.



Step seven

Rubbing lightly in the direction of the grain, use a piece of wire wool to remove some of the topcoat, allowing more of the base colour to show through. Wipe off any dusty residue or paint flakes with a clean cloth.



Step eight

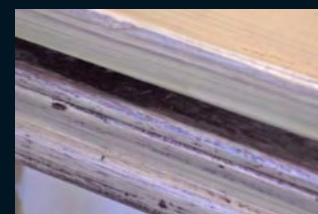
Apply two coats of Resene Aquaclear to the table allowing two hours for each coat to dry.

Give an old wooden side table a shabby chic makeover with a little bit of help from Resene.



To get the look:

Mark painted the background wall with Resene SpaceCote Flat tinted to Resene Double Bianca and the skirting board with Resene Lustacryl tinted to Resene Alabaster.



Other ideas:

Create a cool blue effect by using a basecoat of Resene True Blue and a topcoat of Resene Half Breathless.

For more ideas and inspiration visit your local Resene ColorShop or www.resene.co.nz or www.resene.com.au.

Check out our special Artists section online www.resene.co.nz/artists/artists_canvas.htm or www.resene.com.au/artists/artists_canvas.htm.