

# ZARU

## COLOUR WISE

*by*

Resene

&

Four Families



RE-ESTABLISHED 2014

### FOUR FAMILIES

*blind fabric craftsmanship*



# Resene

the paint the professionals use

# ZARU

## THE STORY

### AVAILABLE IN 6 COLOURS:

PEBBLE, ASH, CHARCOAL, IVORY/WHITE, SANDSTONE, COFFEE

*Suitable for roller blinds, roman blinds & panel glides.*

## HOW IT'S MADE

<b>COMPOSITION:</b>	<i>70% PVC/ 30% Polyester</i>	<b>BREAKING STRENGTH:</b>	<i>Warp 150 daN/5cm Weft 159 daN/5cm (ISO 1421)</i>
<b>WIDTH:</b>	<i>300cm</i>	<b>TEAR STRENGTH:</b>	<i>Warp 6.6 daN Weft 5.8 daN (ISO 4674)</i>
<b>ROLL LENGTH:</b>	<i>22-30m rolls</i>	<b>EXTREME LIGHT STABILITY:</b>	<i>200h ASTM G53-96</i>
<b>WEIGHT:</b>	<i>410gsm +/- 10%</i>	<b>COLOURFASTNESS TO LIGHT:</b>	<i>8 (ISO 105:B02)</i>
<b>THICKNESS:</b>	<i>0.63MM +/- 5% (ISO 2286-2)</i>	<b>SPECIAL TREATMENT:</b>	<i>Low VOC, Mould Resistant (ISO 846)</i>
<b>OPENESS FACTOR:</b>	<i>3%</i>		
<b>PATTERN:</b>	<i>1x2 basketweave</i>		
<b>FIRE CLASSIFICATION:</b>	<i>FR (NFPA 701-2010)</i>		

ZARU'S WEAVING ENVIRONMENTAL MANAGEMENT SYSTEM COMPLIES WITH ISO 14001

OEKOTEX & GREENGUARD CERTIFIED FABRIC

[www.fourfamilies.com.au](http://www.fourfamilies.com.au)



**Resene**  
the paint the professionals use

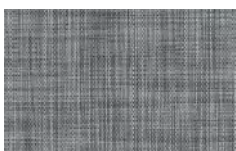
### Nice and Neutral

#### ZARU

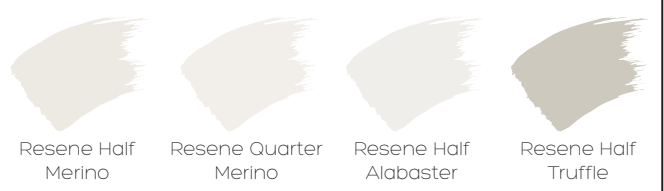
Wall colour   Trim & joinery   Ceiling   Accent colour



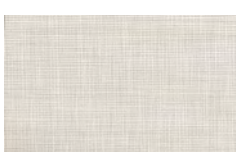
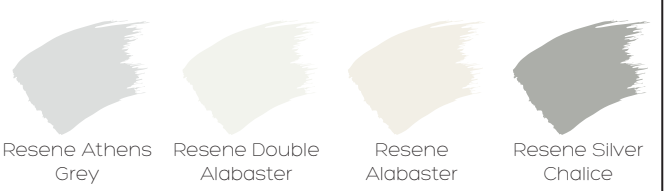
PEBBLE



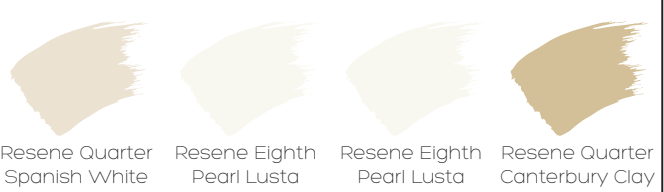
ASH



CHARCOAL



IVORY/WHITE



SANDSTONE



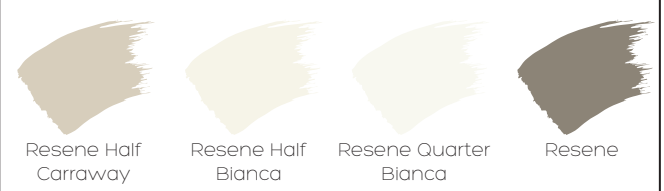
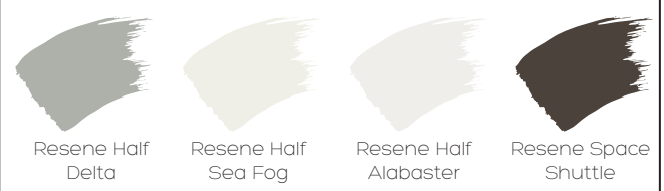
COFFEE



**Resene**  
the paint the professionals use

### Touches of Colour

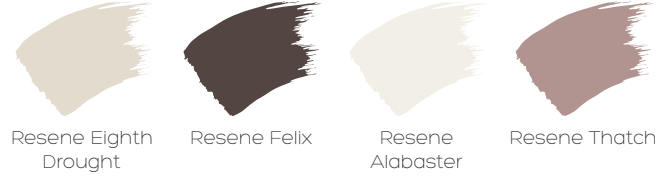
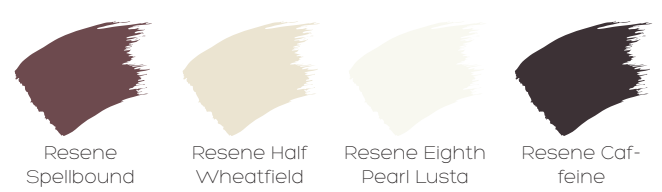
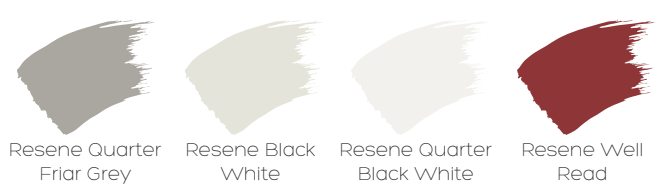
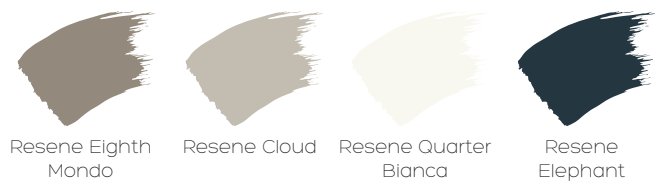
Wall colour   Trim & joinery   Ceiling   Accent colour



**Resene**  
the paint the professionals use

### Colour Lover

Wall colour   Trim & joinery   Ceiling   Accent colour



Colours shown are a representation only. Blinds matched to paint colours may differ batch to batch due to the fabric, texture, sheen and processing. Please refer to the actual blind product sample, or for paint choices, the actual Resene paint sample, before making your final choice. We recommend choosing complementary, not matching, paint colours to work with your blind colour.