

You will need:

- Artists' canvas
- Paintbrushes
- Resene Aquaclear gloss
- Resene Quick Dry
- Resene testpots of Resene All Black, Resene California, Resene Keppel, Resene Snap and Resene Spotlight



Step one

Apply one coat of Resene Quick Dry to the canvas and allow two hours to dry.



Step two

Apply two coats of Resene Spotlight to the canvas, allowing two hours for each coat to dry.



Step three

Wet the surface of the canvas with a generous amount of water.



Step four

Apply a few dabs of Resene California to the wet canvas, allowing the paint to dilute and mix with the water. Allow the canvas to dry.



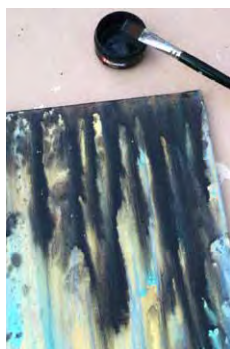
Step five

Wet the surface of the canvas again and apply a few dabs of Resene Snap, again allowing the paint to dilute and mix with the water. Allow the canvas to dry.



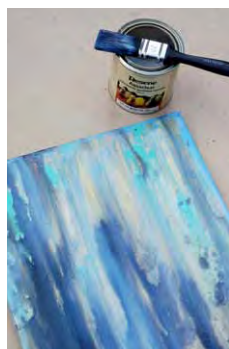
Step six

Wet the surface of the canvas once again and apply a few dabs of Resene Keppel. Again, allow the paint to dilute and mix with the water. Allow the canvas to dry.



Step seven

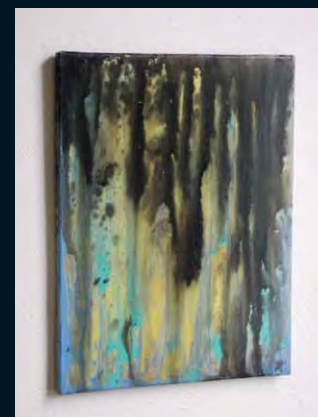
Wet the surface of the canvas once again and apply a few dabs of Resene All Black. Again, allow the paint to dilute and mix with the water. Allow the canvas to dry.



Step eight

Apply two coats of Resene Aquaclear gloss to the canvas, allowing two hours for each coat to dry.

It's easy to create this stunning watercolour abstract using a selection of vibrant Resene colours.



To get the look:

Mark painted the background wall with Resene SpaceCote Flat tinted to Resene Sentimental.



Other ideas:

For a rich dark metallic look use a combination of Resene Bullion, Resene Copper Fire and Resene Magma over a basecoat of Resene Nero.

For more ideas and inspiration visit your local Resene ColorShop or www.resene.co.nz or www.resene.com.au.

Check out our special Artists section online www.resene.co.nz/artists/artists_canvas.htm or www.resene.com.au/artists/artists_canvas.htm.