

INSPIRED BY RESENE

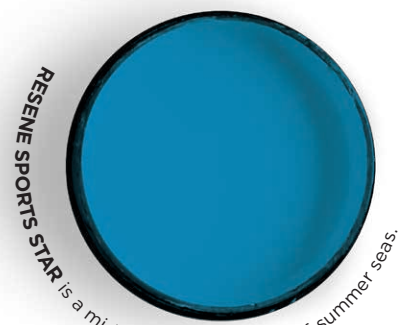
# In the FRAME

*Wondering what to do  
with all the artwork  
your kids make at  
home or at kindy?  
Why not turn a wall  
in your house into a  
colourful gallery*

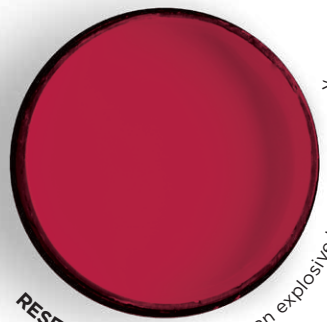
CREATED BY  
SARAH EBERHARDT







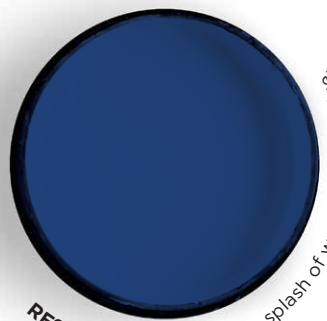
RESENE SPORTS STAR is a mid sky blue, evocative of summer seas.



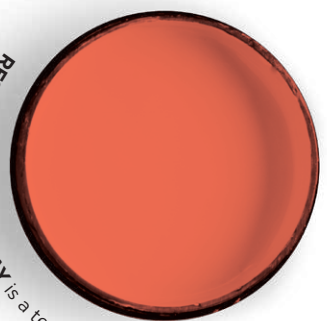
RESENE CANDY FLOSS is an explosive hot magenta pink.



RESENE BRIGHT SPARK is a hot sizzle of yellow.



RESENE SEA WORLD is a splash of warm maritim blue.



RESENE RUBY TUESDAY is a tender apricot orange.



### Painted suitcase art storage

Old suitcases - op shops and Trademe  
Resene Quick Dry Sealer undercoat  
Resene Lustacryl paint in Resene  
Alabaster  
Paint brush

- 1 Wipe suitcase inside and out with a damp cloth and a little dishwashing liquid to get rid of any dirt and oils that will stop the paint adhering. Dry with a towel.
- 2 Paint with 1-2 coats of Resene Quick Dry sealer; leaving to dry between coats.
- 3 Paint with two coats of Resene Lustacryl in Resene Alabaster (white paint); leaving to dry between coats.

### Teardrop suitcase

Resene testpots: Resene Sports Star, Resene Bright Spark, Resene Freelance, Resene Candy Floss, Resene Sea World, Resene Buzz and Resene Ruby Tuesday  
Sponge - we used a cosmetic sponge  
Acetate or cardboard, A4 size  
Permanent marker  
Nail polish remover  
Cotton wool  
Craft knife

- 1 Use a teardrop template and draw teardrops with a marker pen on a sheet of acetate.
- 2 Use a craft knife to cut out teardrops. Use a cotton ball with nail polish remover

to wipe off permanent marker.

- 3 Place template on your suitcase and use a sponge to apply Resene testpot paint. Leave to dry.
- 4 Wipe template with a damp cloth then dry before painting more teardrops.
- 5 For the paint handle, we used Resene Bright Spark.

### Mondrian

Resene Lustacryl paint - we used Resene Alabaster and Resene Nero  
Testpots: Resene Freelance, Resene Candy Floss and Resene Ruby Tuesday  
Painter's tape

- 1 Use purple painter's tape to mark out a grid pattern on your suitcase. Apply tape where you want black lines, a piece either side and remove the middle piece - this is where you paint your black lines.
- 2 Paint over the tape edges with white paint to seal edges and to prevent the black paint from bleeding. Leave to dry.
- 3 Paint two coats of Resene Nero to create black lines. Leave to dry.
- 4 Remove painter's tape - if Resene Nero paint bled, scrape with a craft knife and touch up with Resene Alabaster.
- 5 Using testpot paint, colour in some of the squares/rectangles between the black lines. Paint these areas with two coats; leaving to dry between coats.
- 6 Paint handle. This is better painted with Resene Lustacryl than testpot paint.

### Kids artwork frames

Old wooden frames of various sizes (visit your local op shop for bargain prices)  
Sandpaper 180 grit  
Resene testpots - we used colours:  
Resene Sports Star, Resene Bright Spark, Resene Freelance, Resene Candy Floss, Resene Sea World and Resene Ruby Tuesday  
Pliers  
Paint brushes  
Screwdriver  
Braided string/rope 2mm thick  
Triangle hooks - Picture hanging  
Wire pegs (copper coloured)  
Command Adhesive Velcro picture hanging strips (enough for each frame)

- 1 Begin by removing the glass and backing boards from each of the frames. Use a pair of pliers to remove any metal tags used to hold the backing board and glass in place.
- 2 Lightly sand the frames and wipe them down with a damp cloth to remove any excess sanding dust.
- 3 Paint inside the edge (where the glass previously sat) of the frame, the front face

and sides of the frame using a Resene testpot of paint; leaving to dry between each coat.

- 4 Using a screwdriver, screw the triangle hooks to the back of the frames, one on each side. Allow enough room to fit some wire pegs to hang the art.
- 5 Thread some string or rope through one of the triangle hooks and knot together. Stretch the string across the back of the frame and tie in a knot through the other triangle hooks.
- 6 Attach some Command Adhesive Velcro strips to the back of the frames and hang on your wall.
- 7 Clip your children's latest masterpiece/s into the frame using the wire peg.

### Get inspired online

For more ideas for children's projects, games and room brighteners, take a look at the Kids' section on the Resene website: [resene.co.nz/kids](http://resene.co.nz/kids)

### Testpot tips

- 1 For some added glamour, use a Resene FX Metallic paint for some of your chosen frames.
- 2 If you're not sure about all bright frames, try creating a series of frames in some similar colours, such as all greens, varying from dark to light, or neutral shades from whites through to greys and blacks.
- 3 If you are using timber frames and prefer an earthier look, consider staining the frames with Resene Colorwood wood stain first, then finish in Resene Aquaclear so they are easy to dust for years to come.
- 4 Let your children help decide which colour goes on which frame. They can even help with the painting, too!
- 5 Adapt from day to night and paint stars onto your frames using Resene FX Nightlight. When the lights are out, you will be able to see a galaxy of stars instead. Your little ones will be huge fans, trust us!

- 6 If you have bought your frames in a rough condition, try using Resene Sandtex and apply it to the frames in a criss-cross technique. The texture will help to hide the imperfections and add to the overall look.

- 7 Painting frames is a handy way to use up old testpots without letting them go to waste. Paint a few matching small pots or accessories in the same colour to help bring together the look of the whole room. Add some rice or seeds and they can then be used as maracas, or pop the lids on and use them as drums!

- 8 It may be a good idea to think about your wall colour and where you would like to position the frames in your home. While many of us have white walls, photos and artwork can look much more striking on a bold background.



PHOTOGRAPHY BRYCE CARLETON

FOR MORE IDEAS AND INSPIRATION, visit your Resene ColorShop, 0800 RESENE (737 363) or visit [resene.co.nz](http://resene.co.nz).

# Resene

the paint the professionals use