

**NB. This chart is from the
Resene historical file.
Please refer to current
Resene colour charts
for the latest colour options**

Resene

PAINT EFFECTS



How to achieve your own
decorative paint finishes.

COLOURWASHING • SPONGING • RAGGING • LIMEWASH EFFECTS

COLOURWASHING

The soft, dappled effects and striking contrasts of diluted colour.



The new Resene Colourwashes shown here are achieved by a two-step process, where a coloured base coat is washed or brushed over with a premixed top coat of diluted colour.

INSTRUCTIONS

- 1 Apply 2 coats of the colourwash base coat using Resene Zylone Sheen Washable Wall Paint.
- 2 Pour a small amount of the Resene colourwash top coat into a flat dish, lid or roller tray. (Standard colours are tinted using the Paint Effects Medium).
- 3 Dip the 125mm Resene Colourwash Brush (or similar soft bristled brush) approximately 5mm into the medium and dab onto the wall 2 or 3 times. Now using the flat edge of the brush spread the colourwash in a random manner.
- 4 For a more intense and uniform effect a second colourwash can be applied.

PRACTICAL SUGGESTIONS

- A** The effect can be softened by using a dry brush or sponge to blend any obvious brushstrokes or concentrations of colour as the colourwash top coat dries.
- B** Soaking the bristles of the colourwash brush in water for 10 minutes will soften them and make for easier application.
- C** Obvious lap marks are avoided by working along an 'S' shaped wet edge and by finishing brushstrokes to the edge of each drop and working back on the succeeding drop.

TEST POTS

Resene Test Pots for Colourwash and Limewash Effects enable not only colour co-ordination but the opportunity to experiment with the effects.



CORFU CW 201



BERAT CW 206



FRESCO CW 211



MADEIRA CW 216



MILAZZO CW 202



MACEDONIA CW 207



CAPO RIZZUTO CW 212



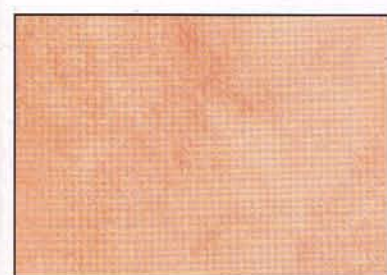
AEGEAN BLUE CW 217



TURIN CW 203



LIMNOS CW 208



BEAUJOLAIS CW 213



BELISE CW 218



PAOLA CW 204



CADIZ CW 209



SALERNO CW 214



AVIGNON CW 219



MOSELLE CW 205



CATANIA CW 210



LOIRE CW 215



RIMINI CW 220



RAGGING

Adding subtle or bold textural effects of marble and crushed velvet.

This is possibly the most difficult and time consuming of the effects detailed here. Ragging or ragrolling can however, replicate the appearances of both marble and crushed velvet, creating the subtle or rich finishes normally associated with the most expensive wallcoverings. The effects are obtained by using a bunched rag or cloth that is then rolled or dabbed over the still wet medium, leaving random patterns as it is pressed on the surface.

Distinctive effects can be obtained by ragging with successive colours. This combined with the almost limitless choice of colours for both the base colour and the ragging medium available from the Resene British Standard and Total Colour ranges, mean that co-ordinating with existing or planned designs is simplified.

INSTRUCTIONS

- 1 Apply two coats of Resene Zylone Sheen Washable Wall Paint in your chosen base coat colour.
- 2 Use the Paint Effects Medium to reduce either Resene Lumbersider or Zylone Sheen in your selected colour to produce a "ragging medium". Dilute your chosen colour by between 70 and 90% and stir thoroughly. The greater the proportion of Paint Effects Medium the less opaque the finish will appear. So for a subtle colour change add more Effects Medium. For a more striking effect, the proportion of Effects Medium to colour should be decreased.
- 3 Using a large soft brush, apply the ragging medium to a section of the wall approximately 1 metre wide. Apply relatively quickly and "work" the medium using criss cross brush strokes, finally laying off the area in a vertical direction.
- 4 Wrap your rag into a loose but compact bundle and roll it using a light downwards pressure in random directions over the wet medium. Corners and misses can be touched up by using a light dabbing motion. The key is to make an irregular pattern that also renders a uniform finish on the wall.

PRACTICAL SUGGESTIONS

- A** Ragrolling is less demanding, particularly on large areas when two people work in tandem, with the first person applying the ragging medium with the brush and the second ragging off with the bundled rag.
- B** Ensure you have ample supplies of the "same" rag or cloth, preferably from a common source, as the rags will require frequent changing during the ragging process. The rags from a single bedsheet should be enough to complete an average living room. Linen, babies' nappies, and even chamouis leather make ideal tools for ragging. They should be well washed and lint free.



BASE COLOUR RAGGED COLOUR
RESENE SOLITAIRE 08 B 15
RESENE KASHMIR BLUE 20 C 37



BASE COLOUR RAGGED COLOUR
1ST RAGGED COLOUR
2ND RAGGED COLOUR
RESENE WAIKAWA GREY 4 B 60
RESENE HAWKES BLUE 7 B 10
RESENE OCEAN GREEN 4 YG 10



BASE COLOUR RAGGED COLOUR
RESENE WHITE
RESENE SHIP COVE 5 B 60



BASE COLOUR RAGGED COLOUR
RESENE CUTTY SARK 3 RG 50
RESENE RAINEE 7 GO 50



BASE COLOUR RAGGED COLOUR
RESENE WHITE
RESENE CLAM SHELL 6 RO 10



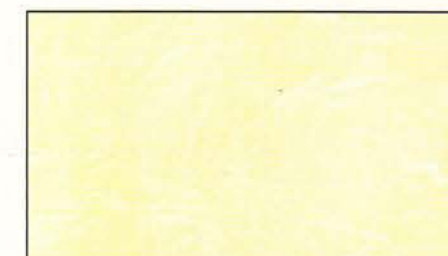
BASE COLOUR RAGGED COLOUR
RESENE ONAHAU
RESENE WAIKAWA GREY 7 B 30
4 B 60



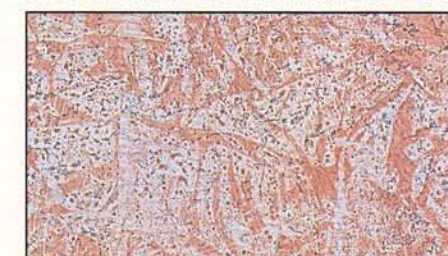
BASE COLOUR RAGGED COLOUR
RESENE WHITE
RESENE MANDY'S PINK 6 OR 50



BASE COLOUR RAGGED COLOUR
1ST RAGGED COLOUR
2ND RAGGED COLOUR
RESENE PEARL LUSTRE 10 B 15
RESENE SANTA'S GREY 6 GR 60
RESENE ORIENTAL PINK 5 RO 30



BASE COLOUR RAGGED COLOUR
RESENE WHITE
RESENE SIDE CAR 6 YO 20



BASE COLOUR RAGGED COLOUR SPONGED COLOUR
RESENE PEARL LUSTRE 10 B 15
RESENE TURKISH ROSE 4 RO 50
RESENE WAIKAWA GREY 4 B 60



SPONGING

Creating a gently mottled or cloud-like effect with harmonising colours.

Sponging is probably the easiest technique to master. The number of effects you can achieve will vary according to the type of sponge used, the way you wield it, and your choice of colours, making this technique ideal for co-ordinating furnishings and fabrics.

INSTRUCTIONS

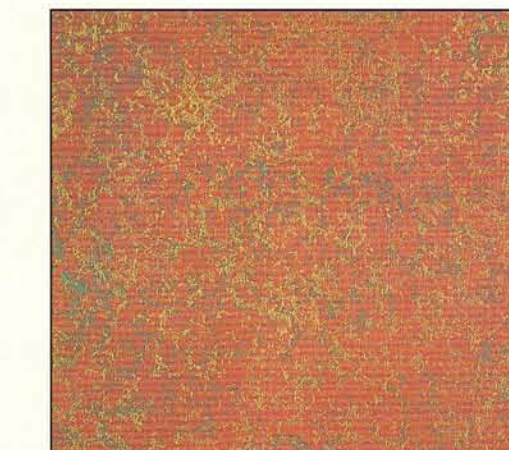
- 1 Apply two coats of Resene Zylone Sheen in your chosen base coat colour.
- 2 Use the Resene Paint Effects Medium to reduce either Resene Zylone Sheen or Lumbersider in your selected colour to produce a sponging medium. Dilute your chosen colour by between 60 and 90% and stir thoroughly. For more subtle colour changes more Effects Medium should be added. For a more striking look, less Effects Medium should be added. Remember, the final result is dependent on the combination of layers of colour and differing textures.
- 3 A piece of stiff card or an artist's palette should first have the sponging medium brushed on to it. This is used to charge your sponge with the medium. Saucers or roller trays should be avoided as these tend to clog the sponge too much and not allow such delicacy and subtlety of finish.
- 4 Now, using a light pecking motion dab the sponging medium on to the wall area, taking care to avoid a regular pattern. This is helped by changing the angle and pressure at which the sponge is impressed.
- 5 After allowing the first sponged colour to dry, repeat the sponging process with your second colour paying attention to spaces in the first pattern. A third colour should be used sparingly in order to highlight the first two.

PRACTICAL SUGGESTIONS

- A** Use a natural marine sponge, dampened in fresh water. Clean the sponge regularly with fresh water, both during use and between coats to prevent paint clogging the sponge.
- B** Replenish the "charger" frequently. If the sponge appears to have taken up too much of the sponging medium, dab it on a piece of spare card.



BASE COLOUR COLOURWASHED WITH SPONGED WITH
RESENE APPLE BLOSSOM 3 RO 40
RESENE CHARDONNAY 5 OR 20
RESENE SANTA'S GREY 6 GR 60



BASE COLOUR 1ST SPONGE 2ND SPONGE
RESENE COPPER RUST
RESENE STROMBOLI
RESENE GOLD EFFE



BASE COLOUR 1ST SPONGE 2ND SPONGE 3RD SPONGE
RESENE WHITE
RESENE NEGRONI 6 YO 60
RESENE SANTA'S GREY 6 GR 60
RESENE WHISKY 06 C 35



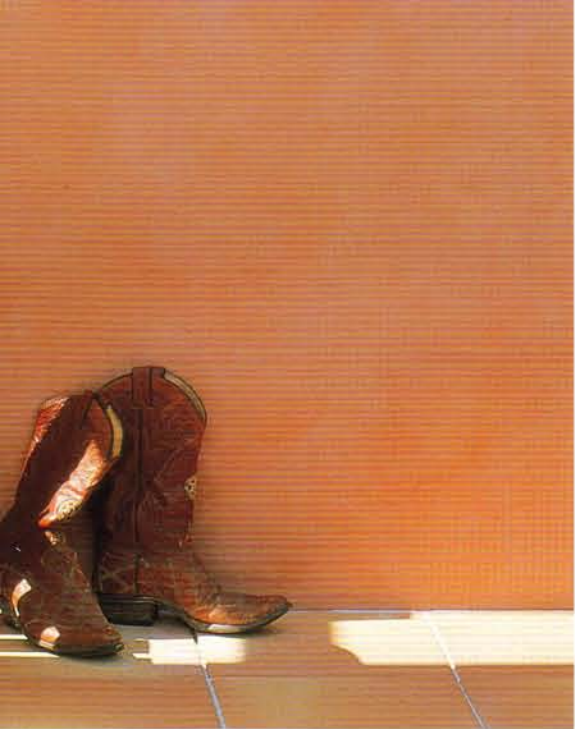
BASE COLOUR SPONGED WITH
RESENE PATINA
RESENE PALE LEAF



BASE COLOUR 1ST SPONGE 2ND SPONGE 3RD SPONGE
RESENE WHITE
RESENE NEW ORLEANS 5 YO 30
RESENE WAIKAWA GREY 4 B 60
RESENE COPPER RUST 04 C 37



BASE COLOUR SPONGED WITH
RESENE PEARL LUSTRE
RESENE SOFT AMBE



LIMEWASH EFFECTS

Using sunburnt colours to reproduce the weathered fresco and patinaed look.

The washed out fresco and the soft patinaed look associated with Mediterranean and Adobe architecture can be reproduced by using the Resene Limewash Effect. The range of colours shown here were achieved using a two-step process not dissimilar to colourwashing.

The mood and image created lends itself equally well to interior and exterior application, particularly where an aged or traditional look is desired.

The finish is both extremely durable and hardwearing and is ideal for any cementitious or plastered surface. Once applied the Limewash Effect attains its "weathered look" and preserves it without unsightly chalking or staining. The effect can also be used on correctly prepared interior substrates or to enhance a Resene Specialist or Architectural system.

INSTRUCTIONS

1 Apply 2 coats of Resene Zylone Sheen Washable Wallpaint in the appropriate base coat colour.

2 Apply the Paint Effects Medium mixed to the appropriate top coat colour as per the colourwashing process.

ADDITIONAL TEXTURE

A coarser textured finish is easily achieved by using Resene Lumbersider mixed with Resene SRG Grit instead of Zylone Sheen for the base coat.

Up to 500 gms of SRG Grit can be added per litre of Lumbersider (2kg per 4 litre). The result is a product that can replicate the coarseness and style of Mediterranean Plaster. Apply the textured base coat with a whitewash brush. Once dry, apply the top coat as above.

TEST POTS

Resene Test Pots for Colourwash and Limewash Effects enable not only colour co-ordination but the opportunity to experiment with the effects.



SEVILLE LW 101



GUACAMOLE LW 106



TERA VISTA LW 102



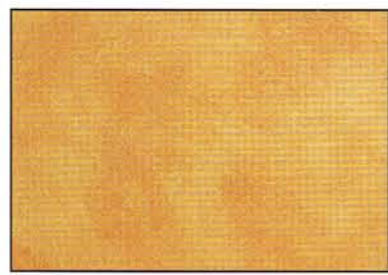
MARRAKESH LW 107



AYERS ROCK LW 103



NAVAHO LW 108



PRAIRIE DUST LW 104



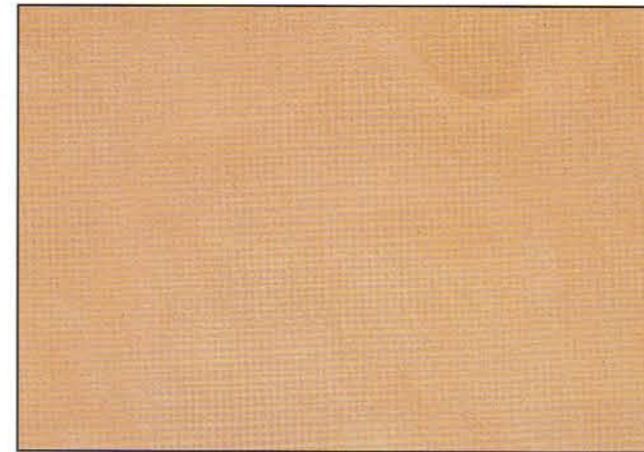
CASPIAN BLUE LW 109



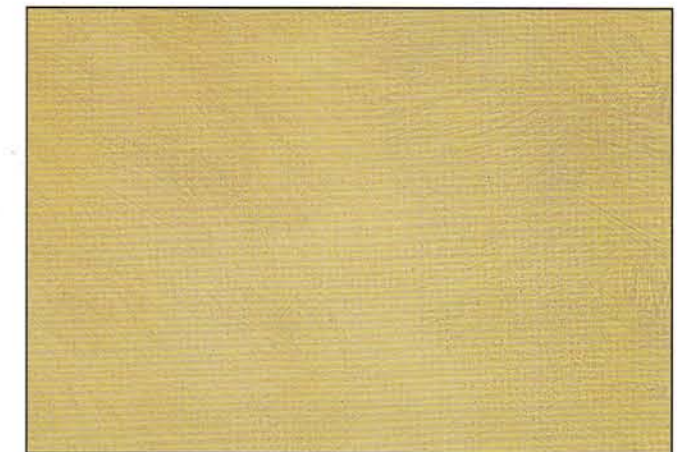
SANTA CRUZ LW 105



AZURITE LW 110



KALAHARI LW 111



ADOBE LW 115



MONTEREY LW 112



SAVANNAH LW 116



TERRAZZO LW 113



CORDOBA LW 117



SALSA LW 114



ADRIATIC LW 118

CREATING THE DIFFERENCE WITH RESENE

Resene makes it easy

You can use Resene's premixed two-step systems which draw on an exciting new range of colours for Colourwash and Limewash Effects.

Or you can experiment with sponging and ragging in any Resene colours you wish. Try different techniques. Apply different colour combinations. Be prepared to be pleasantly surprised.



Combining your talents

By combining several of these paint effects techniques, you can expand the range of decorative paint possibilities even further. For example, you can introduce a stenciled pattern at dado height on a colourwashed or ragged wall.

Alternatively you can apply a colourwash and then rag roll or sponge it. Various combinations of pattern and colour can

be very effective, especially once you've become familiar with the application techniques.

Resene makes all your efforts worthwhile

Once you've created your own look, you'll want that look to be a lasting one. Resene not only provides you with the most specified colour systems available, you'll also have the advantage

of using serviceable, durable finishes. You can use them for interiors or exteriors, bathroom and kitchen areas included. The Resene Total Colour system also allows you to perfectly match and co-ordinate furnishings, trim work, or existing features.

Your Resene Color Shop has everything you need . . . including good advice.

By all means ask. We can often help provide the short cuts to the paint effects solution you're looking for.

Points to remember before starting

- 1 Work on a sample area first. This is especially important when ragging or sponging as the end result is dependent not only on the colour chosen, but the mix ratio and the style of technique. Remember that first efforts can be painted over with the base coat and redone as your expertise develops.
- 2 So that the effect can be carried right to the edge, wall sockets, skirting boards and door frames should be masked off.
- 3 When mixing your ragging or sponging medium add the colour in small increments until you are satisfied with your sample. This way, if it is too subtle you can increase the amount of colour accordingly.
- 4 The Resene Total Colour system is an ideal palette to select colours from because of the unique range of graduated colours and tonings.
- 5 Allow 2-4 hours drytime between coats.
- 6 The addition of up to 10% of Resene Hot Weather Thinners will slow the drying of the Effects Medium. This is particularly useful when ragrolling or colourwashing a large area.
- 7 Add up to 5% clean water to thin the medium – greater flow will result. Clean up equipment in water.
- 8 Coverage will vary greatly and is dependent upon the technique used and the substrate. On smooth surfaces a litre of the Effects Medium will cover between 30 m² and 40 m² per coat.
- 9 When ragging or sponging it is advisable to wear protective gloves.
- 10 In all cases the appropriate labels and data-sheets should be read in conjunction with this chart.

The colours and techniques shown are as close as the printing process allows.



the paint the professionals use

Resene Paints Limited

HEAD OFFICE: VOGEL STREET, NAENAE

P.O. BOX 38 242, WELLINGTON MAIL CENTRE

Phone (04) 577 0500 Fax (04) 577 0600

Internet Home Page <http://www.resene.co.nz> Email advice@resene.co.nz

Technical Advice 0800 Resene (737 363)