



Heart of Gisborne Colour Palette

Colour guidelines for the exterior decoration of CBD buildings

Resene
the paint the professionals use

the heart of 
gisborne
LIVEWORKPLAY

Introduction

Heart of Gisborne is proposing to introduce Gisborne City Design Principles' to guide appropriate development within the CBD. This includes guidance on aspects such as the building façade and verandahs, as well as a colour palette. The important consideration is to ensure that new development is of quality, and that it fits within the established streetscape.

The use of colour on buildings in the city has a significant impact on the streetscape. Gisborne is an isolated, culturally diverse coastal retreat. The natural beauty of the coastline, our sun burnt pastures and contrasting lush green vineyards and cropping fields are underpinned by a strong Maori heritage and sense of pride in this unique place. Previously one of New Zealand's best kept secrets, Gisborne is fast becoming the investor and holiday makers' destination of choice.

The Gisborne colour palette has been developed to reflect those important influences on Gisborne and focuses on the earth and the ocean. The Palette features muted colours that reflect the city's laid back, quiet confidence with a hint of brighter colours to reflect our vitality. Colours have been chosen to add value to buildings of many styles and eras and compliment existing colour schemes. The range features earthy browns, oranges, and greys reflecting our land, while an array of blues and purples reflect the ever changing colours of the ocean. A smattering of complimentary reds associated with Maori tradition have also been included. Pinks and strong browns are noticeably absent from the palette as it is believed that these are not part of the true Gisborne identity.

Guidelines

Three general recommendations to bear in mind when developing a colour scheme:

1. Paint the building in pale colours (creams/neutrals)
2. Highlight building features, elements and architectural details in a contrasting darker or brighter colour.
3. Use colours from the Gisborne Palette.

Particular care must be taken when a building is bulky and featureless and when large plain surfaces are visible to the public. Expanses of wall, unbroken by windows or doors, can have a detrimental effect on the streetscape if they are painted in colours that are out of character with the rest of the street, such as very dark colours or white (which can become grubby or produce glare).

Other factors to bear in mind when selecting colours and products:

- Consider treatment of the surfaces to enable easy graffiti removal.
- Choose colours sympathetic to neighbouring buildings.
- Choose colours that recognise the context of the building. If the building is on a corner site, its surfaces will be highly visible. This building will already be prominent and a colour scheme that enables the building to sit back rather than stand out will achieve a better fit within its environment.
- Consider the era of the building. Pastel colours can be effective for contemporary buildings and pre-1930 buildings are well suited to more traditional colour schemes.

- Some colours naturally co-ordinate well together to create a pleasing effect whilst other colours are discordant when placed together.
- Avoid large amounts of bright colours such as bright red, blue, pink or green. These colours make a building stand out and say 'look at me'. There are other ways to draw attention to a business, such as window display and effective signage. Bolder colours can be incorporate into a colour scheme to accent building detail and provide a contrast against a more neutral backdrop.
- Avoid corporate colour schemes in the central CBD. Elements of a corporate colour scheme can be introduced without dominating a building.
- Elsewhere in the CBD, consider toning down corporate colour schemes.

Note that there are always exceptions to a pastel or neutral colour scheme: an unexpected colour scheme can be effective and become a valued and appreciated part of the streetscape. This is usually achieved through co-ordination of the building's signage, detailing and colours and consideration of the building's context and use. It is recommended that professionals such as artists, architects, landscape architects or colour consultants are employed.

*Sourced from the Resene website (www.resene.co.nz)

Colour Name: Resene Pearl Lusta (and ½'s and ¼'s thereof)

Total Colour Code: 8Y O22 / 9YO22 / 10YO22
Chart Colour Code: 8Y O22 / 9YO22 / 10YO22
Colour Chart / Range: The Range 2005 / The Range Whites and Neutrals
Complimentary Colours: Resene Cab Sav
Resene Eternity
Resene Breakwater

Colour Notes: Resene Pearl Lusta is a popular classic cream with a hint of yellow. This colour is cleaner than Resene Spanish White and paler than Resene Dutch White.



Colour Name: Resene Spanish White (and ½'s and ¼'s thereof)

Total Colour Code: 8YO25 / 9YO25 / 10YO25
Chart Colour Code: 8YO25 / 9YO25 / 10YO25
Colour Chart / Range: The Range 2005 / The Range Whites and Neutrals
Complimentary Colours: Resene Geronimo
Resene Tornado
Resene Napa

Colour Notes: Resene Spanish White is a complexity of hues of yellow oxide, orange, green and raw umber combined to create this well-balanced ever-changing neutral that will work well with most colour-ways and be influenced by surrounding colours and light.



Colour Name: Resene Dutch White (and ½'s and ¼'s thereof)

Total Colour Code: 7YO37 / 8YO37 / 8.5YO37
Chart Colour Code: 7YO37 / 8YO37 / 8.5YO37
Colour Chart / Range: The Range 2005 / The Range Whites and Neutrals
Complimentary Colours: Resene Pohutukawa
Resene Tasman
Resene Dragon

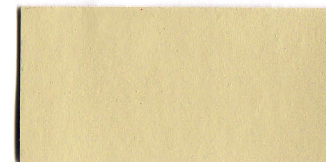
Colour Notes: Resene Dutch White is a clean and simple yellow based cream.



Colour Name: Resene Thistle

Total Colour Code: 7GO03
Chart Colour Code: 10B17
Colour Chart / Range: BS5252 Chart
Complimentary Colours: Resene Granite Green
Resene Bermuda Grey
Resene Gunmetal

Colour Notes: Resene Thistle is a yellow beige green, fascinatingly complex.



Colour Name: Resene Hillary

Total Colour Code: 5.5GO13
Chart Colour Code: 5.5GO13
Colour Chart / Range: Whites and Neutrals Chart 2005
Complimentary Colours: Resene Eternity
Resene Pohutukawa
Resene Pearl Lusta

Colour Notes: Resene Hillary is a green toned beige.



Colour Name: Resene White Pointer

Total Colour Code: 7.5BO30
Chart Colour Code: 7.5BO30
Colour Chart / Range: The Range 2005
Complimentary Colours: Resene Stonewall
Resene Raspberry
Resene Mischka

Colour Notes: Resene White Pointer is a diffused neutral - stark off-white with a hint of black.



Colour Name: Resene Tea

Total Colour Code: 6BO35
Chart Colour Code: 6BO35
Colour Chart / Range: The Range 2005
Complimentary Colours: Resene Indian Ink
Resene Stonewall
Resene Dynamite

Colour Notes: Resene Tea is a complex river boulder beige ideal when pure white seems too harsh, particularly with dark oxide greens.



Colour Name: Resene Napa

Total Colour Code: 5BO25
Chart Colour Code: 5BO25
Colour Chart / Range: The Range 2005
Complimentary Colours: Resene Sensual Red
Resene House White
Resene Eternity

Colour Notes: Resene Napa is a smoky grey beige neutral.



Colour Name: Resene Stonewall

Total Colour Code: 4BO90
Chart Colour Code: 4BO90
Colour Chart / Range: The Range 2005
Complimentary Colours: Resene Fahrenheit
Resene Eternity
Resene White Pointer

Colour Notes: Resene Stonewall is a deep beige neutral that works well with beige and grey hues.



Colour Name: Resene Dragon

Total Colour Code: 3GO02
Chart Colour Code: 3GO02
Colour Chart / Range: The Range 2005
Complimentary Colours: Resene Indian Ink
Resene Stonewall
Resene Dutch White

Colour Notes: Resene Dragon is a dense and moist muddy hue, well suited to hard colours.



Colour Name: Resene Green Mist

Total Colour Code: 6YO03
Chart Colour Code: 12B17
Colour Chart / Range: BS5252
Complimentary Colours: Resene Rock Blue
Resene Kelp
Resene Outer Space

Colour Notes: Resene Green Mist is a pale moss green, restful and sedate.



Colour Name: Resene Green Spring

Total Colour Code: 8GO47
Chart Colour Code: 8GO47
Colour Chart / Range: Lumbersider (2005)
Complimentary Colours: Resene Timber Green
Resene Thistle
Resene Neutral Bay

Colour Notes: Resene Green Spring is a fresh quiet natured green.



Colour Name: Resene Neutral Bay

Total Colour Code: 5B84
Chart Colour Code: 5B84
Colour Chart / Range: Lumbersider (2005)
Complimentary Colours: Resene Green Spring
Resene Montoya
Resene Rakaia

Colour Notes: Resene Neutral Bay is a smoke grey haze with hints of neutral blue.



Colour Name: Resene Eternity

Total Colour Code: 1GO022
Chart Colour Code: 1GO022
Colour Chart / Range: The Range 2005
Complimentary Colours: Resene Pohutukawa
Resene Wasabi
Resene Tea

Colour Notes: Resene Eternity is a complex and murky black green, with a subtle yellow undertone. Works well in a bush setting or against native timbers



Colour Name: Resene Putty

Total Colour Code: 5YO26
Chart Colour Code: 5YO26
Colour Chart / Range: The Range 2005
Complimentary Colours: Resene Pohutukawa
Resene Caffeine
Resene Eternity

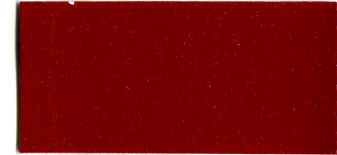
Colour Notes: Resene Putty is a strong cream colour, almost a beige. Well suited to a traditional setting, it will contrast well with strong rich colours.



Colour Name: Resene Pohutukawa

Total Colour Code: 1BR46
Chart Colour Code: 1BR46
Colour Chart / Range: The Range 2005
Complimentary Colours: Resene Wasabi
Resene Yuma
Resene Quarter Spanish White

Colour Notes: Resene Pohutukawa is a spicy rich red inspired by the New Zealand Christmas Tree.



Colour Name: Resene Wasabi

Total Colour Code: 3YG70
Chart Colour Code: 3YG70
Colour Chart / Range: The Range 2005
Complimentary Colours: Resene Tornado
Resene Nero
Resene Tea

Colour Notes: Resene Wasabi is a complex dull lime green.



Colour Name: Resene Indian Ink

Total Colour Code: 1B68
Chart Colour Code: 1B68
Colour Chart / Range: The Range 2005
Complimentary Colours: Resene Rockbottom
Resene Dragon
Resene Hathaway

Colour Notes: Resene Indian Ink is a blackened blue, reminiscent of a night without moonlight.



Colour Name: Resene Sensual Red

Total Colour Code: 2BR63
Chart Colour Code: 2BR63
Colour Chart / Range: The Range 2005
Complimentary Colours: Resene Chenin
Resene Napa
Resene Spanish White

Colour Notes: Resene Sensual Red is a passionate hue, pink blended with red.



Colour Name: Resene Lemon Grass

Total Colour Code: 6GO23
Chart Colour Code: 6GO23
Colour Chart / Range: The Range 2005
Complimentary Colours: Resene Cab Sav
Resene Eternity
Resene Tea

Colour Notes: Resene Lemon Grass is a smoky grey green neutral, remindful of an overcast day.



Colour Name: Resene Tia Maria

Total Colour Code: 1.5OR60
Chart Colour Code: 1.5OR60
Colour Chart / Range: The Range 2005
Complimentary Colours: Resene Bunting
Resene Racing Green
Resene Pearl Lusta

Colour Notes: Resene Tia Maria is a rich red toned orange.



Colour Name: Resene Mondo

Total Colour Code: 3GR08
Chart Colour Code: 3GR08
Colour Chart / Range: The Range 2005
Complimentary Colours: Resene Racing Green
Resene Lemon Grass
Resene Tia Maria

Colour Notes: Resene Mondo is a complex grey green neutral that will adopt the tonings of surrounding colours. Use with oxide greens as well as complex grey greens.



Colour Name: Resene Afterburner

Total Colour Code: 3BR81
Chart Colour Code: 3BR81
Colour Chart / Range: The Range 2005
Complimentary Colours: Resene Rakaia
Resene Nero
Resene Iko Iko

Colour Notes: Resene Afterburner is an appealing yellow red with a hint of fire.



Colour Name: Resene Iko Iko

Total Colour Code: 4.5YO09
Chart Colour Code: 4.5YO09
Colour Chart / Range: The Range 2005
Complimentary Colours: Resene Ying Yang
Resene Gargoyle
Resene Dynamite

Colour Notes: Resene Iko Iko is a toned back mustard green, neither warm nor cool.



Colour Name: Resene Ying Yang

Total Colour Code: 7YO02
Chart Colour Code: 7YO02
Colour Chart / Range: The Range 2005
Complimentary Colours: Resene Tornado
Resene Rhythm
Resene Gelato

Colour Notes: Resene Ying Yang is a mid tone oriental ivory touched with green.



Colour Name: Resene Gargoyle

Total Colour Code: 4BO24
Chart Colour Code: 4BO24
Colour Chart / Range: The Range 2005
Complimentary Colours: Resene Manuka Honey
Resene Mondo
Resene Iko Iko

Colour Notes: Resene Gargoyle is a strong sand beige, dapper and sedate.



Colour Name: Resene Rhythm

Total Colour Code: 4V86
Chart Colour Code: 4V86
Colour Chart / Range: The Range 2005
Complimentary Colours: Resene Geneva
Resene Sonique
Resene Mellow Yellow

Colour Notes: Resene Rhythm is a lyrical lilac, full of light and shade.



Colour Name: Resene Sea Fog

Total Colour Code: 8BO30
Chart Colour Code: 8BO30
Colour Chart / Range: The Range 2005
Complimentary Colours: Resene Lemon Grass
Resene Grey Suit
Resene Aviator

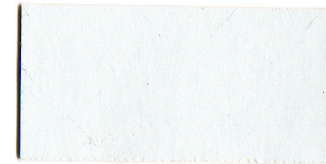
Colour Notes: Resene Sea Fog is a versatile white with a hint of grey, best used with muted rather than bright colours.



Colour Name: Resene Zumthor

Total Colour Code: 8B57
Chart Colour Code: 8B57
Colour Chart / Range: The Range 2005
Complimentary Colours: Resene Sea Fog
Resene Chill Out
Resene Tornado

Colour Notes: Resene Zumthor is a crisp icy off-white with a pale blue edge.



Colour Name: Resene Ashanti

Total Colour Code: 6BG53
Chart Colour Code: 6BG53
Colour Chart / Range: The Range 2005
Complimentary Colours: Resene Espirit
Resene De Janeiro
Resene Sea Fog

Colour Notes: Resene Ashanti is an aqua influenced grey, nebulous and misty.



Colour Name: Resene Tornado

Total Colour Code: 1B67
Chart Colour Code: 1B67
Colour Chart / Range: The Range 2005
Complimentary Colours: Resene Havoc
Resene Wasabi
Resene Double Spanish White

Colour Notes: Resene Tornado is a deep storm blue with a black undertone.



Colour Name: Resene Biscotti

Total Colour Code: 7BO73
Chart Colour Code: 7BO73
Colour Chart / Range: The Range 2005
Complimentary Colours: Resene Enigma
Resene Blondee
Resene Wild West

Colour Notes: Resene Biscotti is an elegant biscuit beige.



Colour Name: Resene Espirit

Total Colour Code: 1.5B57
Chart Colour Code: 1.5B57
Colour Chart / Range: The Range 2005
Complimentary Colours: Resene Hermitage
Resene Attitude
Resene Chalky

Colour Notes: Resene Espirit is a spruce blue green, at home in a mountain forest



Colour Name: Resene Shinto

Total Colour Code: 7B66
Chart Colour Code: 7B66
Colour Chart / Range: The Range 2005
Complimentary Colours: Resene Tsunami
Resene Arrowroot
Resene Yuma

Colour Notes: Resene Shinto is a Japanese influenced grey, ancient and cultured.



Colour Name: Resene Hermitage

Total Colour Code: 7BG52
Chart Colour Code: 7BG52
Colour Chart / Range: The Range 2005
Complimentary Colours: Resene Bavarian Cream
Resene Espirit
Resene Cajun

Colour Notes: Resene Hermitage is a stony blue green teeming with unusual watery influences.



Colour Name: Resene Breakwater

Total Colour Code: 4B27
Chart Colour Code: 4B27
Colour Chart / Range: The Range 2005
Complimentary Colours: Resene Alo Alo
Resene Chill Out
Resene Coyote

Colour Notes: Resene Breakwater is a young cheeky versatile mid blue.



Colour Name: Resene Tsunami

Total Colour Code: 5B90
Chart Colour Code: 5B90
Colour Chart / Range: The Range 2005
Complimentary Colours: Resene Flotsam
Resene Vanquish
Resene Chill Out

Colour Notes: Resene Tsunami is a strong force of nature, grey blued neutral.



Colour Name: Resene Chill Out

Total Colour Code: 7YG70
Chart Colour Code: 7YG70
Colour Chart / Range: The Range 2005
Complimentary Colours: Resene Gelato
Resene Pearl Lusta
Resene Breakwater

Colour Notes: Resene Stack is an armament grey, serious and earnest.



Colour Name: Resene Gravel

Total Colour Code: 2.5GR11
Chart Colour Code: 2.5GR11
Colour Chart / Range: The Range 2005
Complimentary Colours: Resene Pohutukawa
Resene Sea Fog
Resene Fireball

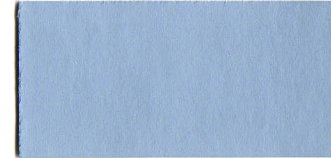
Colour Notes:



Colour Name: Resene Rock Blue

Total Colour Code: 6B65
Chart Colour Code: 20C35
Colour Chart / Range: BS5252 Chart
Complimentary Colours: Resene Logan
Resene Colonial White
Resene Outer Space

Colour Notes: Resene Rock Blue is a moonstone blue, seriously beautiful.



Colour Name: Resene Gotham

Total Colour Code: 2.5GR66
Chart Colour Code: 2.5GR66
Colour Chart / Range: The Range 2005
Complimentary Colours: Resene Consuela
Resene Moby
Resene Wasabi

Colour Notes: Resene Gotham is a depths of the sea blue, brings out the brightness of accents.



Colour Name: Resene Flotsam

Total Colour Code: 7.5GR14
Chart Colour Code: 7.5GR14
Colour Chart / Range: The Range 2005
Complimentary Colours: Resene Racing Green
Resene Sea Fog
Resene Gravel

Colour Notes: Resene Flotsam is a dirtied neutral, deeper than Resene House White with a hint of lilac.



Colour Name: Resene Aviator

Total Colour Code: 1B26
Chart Colour Code: 1B26
Colour Chart / Range: The Range 2005
Complimentary Colours: Resene Colin's Wicket
Resene Sea Fog
Resene Farenheit

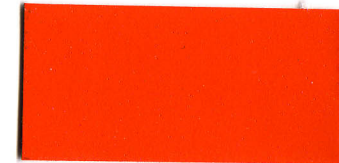
Colour Notes: Resene Aviator is a deep dusk blue of great heights.



Colour Name: Resene Fireball

Total Colour Code: 1OR39
Chart Colour Code: 1OR39
Colour Chart / Range: The Range 2005
Complimentary Colours: Resene Aviator
Resene Gravel
Resene Dutch White

Colour Notes: Resene Fireballs is a clean saturated orange with tonnes of energy.



Colour Name: Resene Balderdash

Total Colour Code: 3GR68
Chart Colour Code: 3GR68
Colour Chart / Range: The Range 2005
Complimentary Colours: Resene Cajun
Resene Shinto
Resene Biscotti

Colour Notes: Resene Balderdash is a winterised grey slate, dense and earthy.

