

the Resene magazine

INSIDE: WIN \$5000 IN PRIZES

# habitat

summer 09/10 rrp\$7.95 issue 11

celebrate summer  
from the bach to your own back yard

storage secrets  
for every room

top tips for choosing a...  
kitchen designer, house cleaner,  
entertainment system

make a retro  
caravan birdhouse

give greens a go



make yourself a home

 Resene Vindaloo



 Resene Dynamite



 Resene Pursuit



 Resene First Light



**Enjoy life in total colour**




 Resene Avalanche




 Resene Limitless



 Resene Upstage



 Resene Jumpstart

Get more life in your colour and more colour in your life with the **Resene Total Colour System**. Thousands of colours to choose from for all your interior and exterior decorating projects, including the latest **The Range 2010 fashion fandeck** full of fashion colour trends for 2010 and beyond. Or let us create a custom colour match to suit your style.

**Australia:**  
1800 738 383  
[www.resene.com.au](http://www.resene.com.au)

**New Zealand:**  
0800 RESENE (737 363)  
[www.resene.co.nz](http://www.resene.co.nz)



**Resene**

the paint the professionals use

Colours as close as printing process allows



*Bring a touch of  
Europe into  
your home*

**VEN  
LU  
REE**

You too can have the sophistication of Europe in your home with new Sunline shutters from Venluree. Sunline shutters are available in three solid timbers – cedar, basswood and silkwood – which create a classical look while regulating comfort levels in your home. With blade sizes and configurations to suit nearly any door or window, Sunline blinds are the easy way to bring out the best in your home.

Freephone 0800 836 587 [www.venluree.co.nz](http://www.venluree.co.nz)

# welcome



After the doom and gloom of recent economic times and, frankly, a shockingly cold start to winter this year, it's a tonic for the soul to feel the warmer weather. There's something about the sun and its warmth that buoys our spirits. It's no doubt a mix of irrational emotive reaction and that of our body's need for vitamin A. Certainly, a lack of sunlight is considered a primary cause of seasonal affective disorder (SAD), a serious form of the 'winter blues'.

So let's shrug off any lingering gloominess and celebrate summer. What better way than by splashing about a bit of bright colour – there are the fresh greens on page 10, the cooling elegance of the house interior colours on page 22, the snazzy Art Deco buildings on page 62, and the quirky colours on our retro caravan birdhouse project on page 78.

Obviously at *Habitat*, we love colour and would love to see more of it used. As one person in these pages suggests, maybe recent events will have a colourful spin-off as people stay put in their houses and feel they can make them more individual with bolder paint shades. Go on, be bold and enjoy summer.

Sharon Newey editor

There's nothing like warm weather to bring out the spring cleaning and redecorating bug in most of us. For many it's the signal to turn off the heater and crank up the air conditioning instead.

Traditionally we might have picked a red, blue or perhaps a dark green just because they looked good, but with advances in modern technology you can now pick a colour that not only looks great but that will keep your place cooler. Resene Cool Colours reflect much more of the sun's heat than standard paint colours, so you can get a stunning exterior paint finish that's also very practical.

Of course, if you're planning some exterior painting this spring and summer make sure you protect yourself as well as your place, and slip, slop, slap and wrap before you start. Sounds simple, but often it's the one thing that decorators forget to do.

Talking about hot tips, there's nothing worse than paint drying too fast in summer, so if you find that's a problem give Resene Hot Weather Additive a go. It'll slow down the drying, giving you more time to get the finish you are after without feeling like you are in a race against time. Happy painting!

# Dress up your walls

Building on the popularity and versatility of previous Resene wallpaper collections, the Resene Wallpaper Collection 2011, is designed to take homes and buildings into the next decade.

The 2011 collection features popular patterns in modern neutral hues through to striking black meets white designs that look fabulous in feature areas.

The Resene Wallpaper Collection 2011 is available exclusively from Resene ColorShops.



## Resene

the paint the professionals use

1800 738 383 0800 RESENE (737 363)  
[www.resene.com.au](http://www.resene.com.au) [www.resene.co.nz](http://www.resene.co.nz)

Editor: Sharon Newey  
 Advertising Manager: Carolyn de Freyne  
 Phone: 0272 808 070, email carolyn@jonespublishing.co.nz  
 Creative Services Director: Lisa Morton  
 Production Managers: Esther Berg, LauraGrace McFarland, Lucy Green  
 Publishers: John Baker, Julian Andrews  
 Design Team: Emma Buller, Sally Fullam, Giselle Reid  
 Printing: PMP Print

Published by

**JONES**

Jones Publishing Ltd – a division of Tangible Media  
 PO Box 78070, Grey Lynn, Auckland 1021, New Zealand  
 Phone: +649 360 5700  
 Facsimile: +649 360 5702  
 www.tangiblemedia.co.nz



*Habitat* is a bi-annual publication. The contents of *Habitat* are copyright and may not be reproduced in any form without the written permission of Resene Paints. Opinions expressed in *Habitat* are not necessarily those of Resene Paints or the publisher. No responsibility is accepted for the authors' suggestions or conclusions, or for any errors or omissions. Copyright 2009 Resene Paints Ltd. ISSN: 1176-8010

Published for



the paint the professionals use

In Australia:  
 Resene Paints (Aust) Ltd  
 PO Box 785, Ashmore City  
 QLD 4214  
 Website: www.resene.com.au  
 Email: advice@resene.com.au  
 Phone: 1800 738 383

In New Zealand:  
 Resene Paints Ltd  
 PO Box 38242, Wellington Mail Centre  
 Lower Hutt 5045  
 Website: www.resene.co.nz  
 Email: advice@resene.co.nz  
 Phone: 0800 RESENE (737 363)

Some products or services may not be offered in your area or country. Please check with your local Resene ColorShop for availability. Most Resene products can be ordered in on request though lead times and minimum order quantities may apply.

To update your mailing address, email update@resene.co.nz with 'Update Habitat magazine details' in the subject line. Please include your ColorShop Cardholder number. Or call 0800 RESENE (737 363) (NZ) or 1800 738 383 (AUST).

Colours are as close as the printing process allows. Printed on environmentally responsible paper, sourced from sustainable managed PEFC certified fibre, and compliant with the requirements of environmental management system standard ISO14001, using environmentally neutral offset web inks.

 Resene  
 Flourish

Choose **Pearl**  
 a fire to reflect your  
 current style...

then re-dress it to suit your next one.

We are passionate about creating beautiful fireplaces that are exquisite and exceptionally crafted to the world's finest standards. The Pearl features a glass silk screen and trim which can be finished in any colour from the Resene Total Colour System and easily updated every time you need it to.

**Flameboyant** 

flameboyant.co.nz

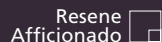


**Cover look**  
 Shapely arms, a sturdy mid-section, strong legs and a colourful personality. What better company to keep in your subtropical garden paradise than this COD Classic Chair, painted in Resene Flashback? Made by COD Classic Outdoor Designs ([www.cod.co.nz](http://www.cod.co.nz) or 0800buyacod) for 10 years now, the chair and footstool are part of a range of high-quality assembled outdoor furniture, finished in Resene paints, that stand up to the test of time. The house colour is Resene Afficionado, the fence is in Resene Irons and the deck is in Resene Uluru. Cushions are from Nest. Picture: Mark Heaslip, Styling: Liz Kerby.

## WIN this COD Classic Chair

Write your name and full contact details on the back of an envelope and mail to COD/Habitat, Tangible Media, PO Box 78070, Grey Lynn, Auckland

**Conditions of entry:** Competition is open to NZ residents only. All employees, and their immediate families, of Resene Paints Limited, Tangible Media and their advertising agencies, are ineligible to enter. Prize may not be exchanged or redeemed for cash. Competition closes 5pm, 30 November 2009.



## contents

### celebrate summer

#### 22 iconic inspiration

Cool Karen Walker colour transforms this villa

#### 46 sea change

This new bach is a much-loved family destination

#### 58 summer under cover

Is it time to spring-clean your insurance policies?

#### 66 black magic

This kitchen uses a striking colour combo

#### 74 outside in

A bach bathroom takes an unconventional approach

#### 82 recipe for relaxation

A pool, sun and outdoor living make this garden a drawcard

### features

#### 32 model behaviour

Artist Gidon Bing loves working with ply

#### 56 kid's zone competition

Use fun and colour to win a kid's room package

#### 60 down at the marae

DIY Marae kicks off another TV season

#### 62 deco-rated hero

One man's long-held passion for Napier's Art Deco heritage

#### 80 scrubbing up

Employing a house cleaner





**every issue**

**10 testpots**

Fresh greens and table settings

**14 off the shelf**

**20 win with Habitat**

**34 responsible renovating**

Clever storage ideas for every room

**38 going green**

An inner-city house stays cool

**44 tips and tricks**

The latest in home entertainment systems

**69 choosing and using**

... a kitchen designer

**78 step by step**

Make this funky retro caravan-style birdhouse

**90 diy kidz**

Revamp a bedside table

**92 top tips**

Using a trailer this summer

**94 cardholder offers**

**96 bright ideas**

Some exciting exterior treatments

**97 hey habitat**

**98 my favourite colours**

Broadcaster Geoff Bryan goes bright



**Give your feathered friends a camping holiday**



Resene Supernova 

# go for green

Vibrant and acidic, or soft and liquid, ambiguous greens perfectly complement these summery table settings.





styling Liz Kerby  
pictures Mark Heaslip

Of all the words describing all the colours, green has become overwhelmingly wedded to one thing – environmental friendliness. Green has always been linked to nature for obvious reasons, so its current association with the protection of our natural world stands to reason.

The word green is closely related to the Old English word growan, meaning ‘to grow’. Aside from its nature connotations, it also describes inexperience, jealousy, or illness.

Green has always been popular for decorating our homes, from the soft sages of Victorian times to the mints of the 1950s, the acid greens of 1960s and earth and emerald greens of the 1970s.

It’s a colour well represented in the latest fandeck from Resene, The Range 2010. There’s the mature and earthy Resene Rutherford, the playful lime Resene Limerick and the seafoam blue/green of Resene Reservoir.

The green palette has shifted as we combine our lifestyles with more sustainable living rather than just sustainable living defining lifestyle. There is a move away from basic earthiness towards the warmth and comfort of copper browns, such as Resene Desperado, while healthy oranges and pinks, such as Resene Daredevil and Resene Vibe, pack some punch. A fusion of warmth with the green palette sees brown enhanced golds, such as Resene Hot Toddy, warmed yellow greens, such as Resene Kombi, and rich dusty greens, such as Resene Rutherford, growing in popularity.

A sprinkling of yellow greens with fresh and acidic undertones, such as Resene First Light and Resene Poprock, is mindful of fresh spring foliage and the energy of youth. There is a misty and thoughtful cast over sectors of the green and blue palette, with frosted, pale >

**Above** Background: Resene Ipanema. Jengala jug, \$22.50, from Corso de Fiori. Greta water glass and champagne flute, \$16.95 each, from Nest. 250 oven-to-table dinnerware: soufflé dish, \$21.95, small plate, \$21.95, large plate, \$32.95, from Nest. Deauville cutlery set, \$275 for 32-piece set, from Nest. Iron Sand placemat, \$6.60, from Corso de Fiori. Spotted Bodum paper napkin and cube sculpture, stylist’s own. Ash dining table from Simon James Design, in various sizes.

**Left** Background: Resene Patriot. Spin cereal bowl and side plate, \$14.95 each, Spin dinner plate, \$18.95, from Nest. Deauville cutlery set, \$275 for 32-piece set, from Nest. Capeli Tide glass, \$16.90, and Frangipani Flower placemat, \$8.90, from Corso de Fiori. Crown Lynn boat vase and blue glass vase, stylist’s own. Ash dining table from Simon James Design, in various sizes.

See overleaf for stockist details.

 Resene Ipanema

 Resene Patriot



There is a misty and thoughtful cast over sectors of the green and blue palette.

aquatic colours, such as Resene Glacier and Resene Comfort Zone. The soft focus hints of subtle depths and lends a sense of ethereality. The feeling is cool, dominated by blues with additions of pale greens, such as Resene Reservoir and Resene Kandinsky, and soft putty hues, such as Resene Fleetwood and Resene Miso, for a complete look.

Blues are a natural companion to green, and the increasing prevalence of blues in the palette reflects their growing popularity. Ambiguous colours, such as Resene Maestro and Resene Patriot, cross the line between blue and green.

With the complications of busy modern lifestyles and the concerns of the economy and the environment we yearn to escape our daily routine – made possible with refreshing and dynamic colour inspired by exotic places. Hot reds, such as Resene Jalapeno and Resene Del Toro, meet rust and exotic oranges such as Resene Vindaloo and Resene Ayers Rock.

Taupe, such as Resene Perfect Taupe, continues to strengthen as a key anchoring neutral as we move away from cooler grey tones. Taupe has many subtle nuances because of its ability to adapt to other colours and influencers in the space it is used. Browns, such as Resene Stonewashed and Resene Half Pravda, are softening towards taupe.

The latest colour trends are showcased in the Resene The Range 2010, available from Resene ColorShops or you can order a copy online from the Resene website. **H**

**Stockists** Corso de Fiori, [www.corso.co.nz](http://www.corso.co.nz), 09 307 9166. Highbury Galleria, 09 418 0428. Nest, [www.nest.co.nz](http://www.nest.co.nz), 09 361 5555. Romantique, [www.romantique.co.nz](http://www.romantique.co.nz), 09 480 2232. Simon James Design, [www.simonjamesdesign.com](http://www.simonjamesdesign.com), 09 377 5556. The Tea Lady, [www.thetealady.co.nz](http://www.thetealady.co.nz), 09 420 6257.



**Top** Background: Resene Vitra. Purple glass vase, \$18, from Highbury Galleria. Crinoline Lady Teapot (not for sale); Royal Albert June Glory cup, saucer and plate, \$55; crocheted sugar bowl cover, \$17; silver sugar cube tongs, from \$25; Royal tea spoon, \$12; knitted lamington, \$17; embroidered napkin, \$30 for six. All from The Tea Lady. Doily placemat, \$20, from Romantique. Ash dining table from Simon James Design, in various sizes.

**Above** Testpots from left clockwise, Resene Kombi, Resene Vitra, Resene Patriot, Resene Ipanema, Resene Kumutoto, Resene First Light, Resene Flourish (at right).

 Resene Vitra

# WARWICK

## Origins

An ethnic range of fabrics with African, Asian and Hispanic influences. Consisting of velvets, textured plains, embroideries and prints



Auckland  
Gold Coast  
Perth

Adelaide  
Hobart  
Sydney

Brisbane  
Melbourne  
United Kingdom

0800 922 000 (outside Auckland)  
09 477 3080  
[www.warwick.co.nz](http://www.warwick.co.nz)



# off the shelf

New products and ideas for the home.



## < paint colour cues for 2010

Contrast and contradiction drive the latest colour trends – bringing old and new, and cool and warm together, blending layers, textures and colours in unique combinations. This is reflected in Resene's The Range 2010, with its warm greens, truer yellows, misty blues, ambiguous greens and frosty aquas. And to make putting your colour scheme together easier, the back of each colour chip includes three complementary colour suggestions to get you started.

You'll find all this and more in the new The Range 2010. See the 'paint colour cues for 2010' brochure or visit the Resene website. The Range 2010 is available from Resene ColorShops and resellers nationwide.



## < crystal clear

From the stylish new Villeroy & Boch crystal range, Finery, this decolight comes in burgundy, olive and clear and is designed for tealights and block candles. There is also a hurricane lamp which can also be used as a vase or for floating floral displays. See [www.villeroy-boch.com](http://www.villeroy-boch.com).

## eco decorators


Not quite eco warriors, but the new Resene Eco Decorator programme is designed to recognise a nationwide network of environmentally responsible, quality-focussed painting contractors. Contractors are assessed for principles in practice, sustainable work practices, waste management, project plans and sign-off processes, giving homeowners and architects eco-friendly choices not just of products but of people. For more information, see [www.resene.co.nz/ecodecorator.htm](http://www.resene.co.nz/ecodecorator.htm) or your Resene ColorShop. (Available in NZ only.)

Resene Matterhorn 

## hooked on summer >

Known for its superb bean bags, Coast New Zealand has now developed two new outdoor ranges – Cayo Collection and off the Hook. The ranges are made from sustainably-grown NZ timber and finished with Resene Lustacryl. Off the Hook includes this funky 1.9m-high Easel for portable and flexible beach storage – just hang up your damp towels and beach bags.

The Cayo Collection includes a three-seater sofa, a two-seater, a chair and coffee tables. The squabs are all-weather foam inners with Sunbrella fabric. Coast also makes deck chairs, bags and other accessories. See [www.coastnewzealand.com](http://www.coastnewzealand.com).

Resene Kermadec 




## good and green

The Good Environmental Choice Label is an Australian initiative which indicates the environmental performance of a consumer product from a whole-of-product-life perspective. The voluntary environmental performance standards have been created and assessed in conformance to international standards.

A selection of Resene products now meet Good Environmental Choice specifications. See the Resene website, [www.resene.com.au](http://www.resene.com.au).



RES-2008  
GECA 23-2005-  
Architectural and Protective Coatings

Resene Secrets 

## hunting at home >

Avoid accidental shootings; why not stay home and take aim at your wallpaper? This aptly named design, Target Practice, is from the Vision NEO collection, a fascinating collection inspired by nature that gives the feeling of being on safari in your own home. Available now from Resene ColorShops.

Resene Triple Stack 



## nod to nostalgia >

As a nostalgic nod to a favourite ice-block, these Jelly Tip Bowls by Susannah Bridges come in apple green, red and black. From Essenze, visit [www.essenze.co.nz](http://www.essenze.co.nz).



## < clever cover colour

Fairydown's versatile Espresso Feather & Down Blanket now comes in eight new fashion colours, selected in collaboration with Resene to simplify the planning of your interiors when matching fabric to paint. The blankets are an extra layer of winter warmth or a lightweight duvet alternative for summer. The new colours also come in pillow cases and include Alabaster, Perfect Taupe, Mondo, Casper, Matakana, Double Foundry, Pohutukawa and Bounce. Available in a range of sizes from mid October from leading bedware retailers or see [www.fairydownbedware.co.nz](http://www.fairydownbedware.co.nz).

## deck dress

Resene Stonewashed 


Tired timber decks can be quickly rejuvenated with new Resene Woodsman Decking Stain, a waterborne modified oil-based stain developed especially for new and weathered decking. A new addition to the popular Resene Woodsman woodcare range, Resene Woodsman Decking Stain is available in a selection of the Resene Waterborne Woodsman colours. Clean up is quick and easy with water and without the solvent fumes associated with traditional solventborne stains. Available from Resene ColorShops and Resellers.

## > a touch of Europe

Inspired by the effortless style and timeless architecture of Europe? These new Sunline shutters from Venluree are a stylish and cost-effective way to recreate the look.

The shutters are available in three different timbers – cedar, basswood and silkwood – and in a range of sizes and configurations to suit both doors and windows. Shutters are an attractive way to control light and heat in your home.

See [www.venluree.co.nz](http://www.venluree.co.nz).

Resene Double Thorndon Cream 



## cool underfoot

Resene Cool Colours have gone from roofs and walls to trim, joinery, decks... and now to the ground. Resene Cool Colours can now be requested in selected Resene Waterborne Sidewalk paving paint. Resene Waterborne Sidewalk is a low-sheen pigmented paint finish designed for trafficable areas inside and out while Resene Cool Colours are used outside to help reduce heat buildup, thereby reducing the stress on the coating and substrate.

Resene Cool Colours are also available in a wide range of other exterior finishes and colours. Resene colours available as Cool Colours are marked with CC next to the colour name on Resene colour charts or see [www.resene.com/swatches/index.php](http://www.resene.com/swatches/index.php) for the latest list.

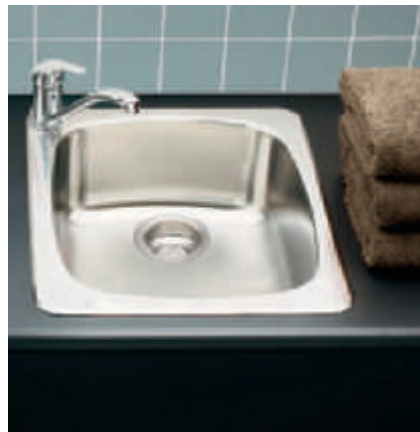




### < fresh air at your fingertips

If the raindrops don't get to it first, the VSE Electric Opening Skylight can be operated using this stylish slimline remote for fresh air at the touch of a button. The 'plug and play' skylight has built-in rain sensors which automatically close the window when the first rain drop falls. Visit [www.velux.co.nz](http://www.velux.co.nz) or phone 0800 402 080.

Resene Napa 



### ^ laundry troughs for tricky spots

Abey's new Laundry Trough range is an easy solution for awkward laundry areas. Made from commercial-grade stainless steel, with soft styling radius corners and polished bowls as standard features, the range has single or double bowls with huge sizes of up to 72 litres. All laundry troughs are supplied with designer wastes and are available plain or with an optional left or right hand side bypass, overflow and tape hole. For details on where to buy, phone Hydroflow on 0800 488 444.



### ^ blinds control temperature

Resene Streetwise 

Choosing the right window protection can help regulate your house's internal temperature and reduce heat loss through windows by up to 70%. DUETTE® Architella Shades feature a patented honeycomb-within-a-honeycomb construction dramatically increasing the product's ability to insulate in the winter and cool against summer heat.

Three distinct air pockets give superior energy efficiency and increased insulation. The inner TruPleat construction keeps every shade crisp and consistent from front to back and top to bottom. Layers of fabric give more luminous colour and the blinds are made from anti-static, dust-resistant polyester, to make them easy to clean. See [www.luxaflex.co.nz](http://www.luxaflex.co.nz).



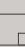
### < standing tall

Free-standing baths are becoming increasingly popular as a feature in large bathrooms but finding a suitable free-standing floor-mounted bath mixer is not easy. Foreno Tapware's X-Factor Floor Mount Bath Mixer (XFCFB) solves that problem with a minimalist look that compliments any style of bath and which stands 980mm high with a 220mm reach. Available from plumbing and hardware merchants. Contact Foreno Tapware at [www.foreno.co.nz](http://www.foreno.co.nz) or 0508 367 366.



### < vanity luxury

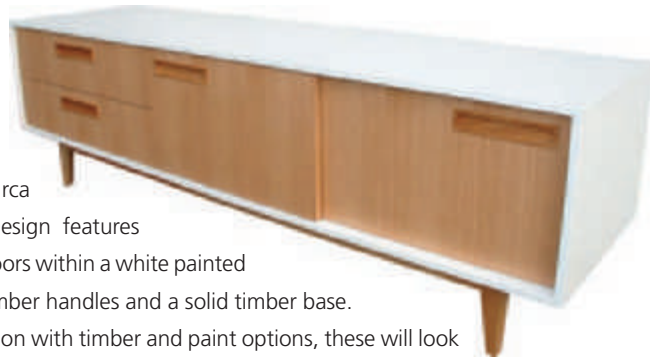
The luxurious new 2009 Sistema Collection has just been released by Plumblin. Manufactured locally from American Oak and coupled with some of the world's best vitreous china basins, each cabinet is available in six stain colours. All units also feature soft closing drawers and doors, and are protected with a marine-grade moisture resistant sealer. Call Plumblin for a copy of their catalogue, 04 568 9898.

Resene Whiteout 



## retro chic >

This smart new Circa sideboard from Neo Design features American Oak sliding doors within a white painted carcass, custom solid timber handles and a solid timber base. Made to any configuration with timber and paint options, these will look superb in any contemporary space. Visit [www.neodesign.co.nz](http://www.neodesign.co.nz).



## v minimal magic

Resene Nest Egg 

Real Fires is spreading its warmth across the Tasman, with the Real Fire 800mm Minimal Gas Fireplace soon to be released in Australia. The Real Fire 800mm Minimal Gas Fireplace is remote control operated and features fully modulating flame controls and a two-speed fan set. It's part of a range that includes 1000mm-wide and 1200mm-wide models.

The Real Fires range of New Zealand-made gas fireplaces feature fully insulated fireboxes, eliminating the need for fireproofing and ventilation within the fireplace cavity. All fires come with comprehensive warranties and full service and back-up. Stockists are available on [www.realfires.co.nz](http://www.realfires.co.nz).



## wet stain? No problem >

Armed with research that indicated 70% of all carpet stains are 'wet' such as tea, coffee and red wine, carpet maker Cavalier Bremworth has come up with a new carpet stain remover for wet stains to complement the dry stain remover the company has produced for 20 years. Designed as an emergency stain remover, the product is extremely effective and available at your local supermarket.

Resene Kumutoto 



## on top

With an increasing interest in lower paint sheen options for exterior use, new Resene Summit Roof is a waterborne satin roof paint, which in some situations can be applied without the need for priming. It's available in a wide range of colours including Resene paint matches to popular COLORSTEEL®/COLORBOND® colours. Resene Summit Roof can also be tinted to a range of Resene Cool Colours to minimise heat buildup in the paint, substrate and building. See your local Resene ColorShop or Reseller.



From floor to ceiling, the essence collection of lighting, newly launched designer rugs, furniture and a wide selection of accessories, aims to take New Zealand design to homes all over the world.

**It all starts here in Parnell!**

**essenze™**  
NEW ZEALAND INSPIRED DESIGN

objects • furniture • lighting • rugs

285 Parnell Road, Parnell, Auckland  
Telephone: 09 300 6238  
Email: [parnell@essenze.co.nz](mailto:parnell@essenze.co.nz)

[www.essenze.co.nz](http://www.essenze.co.nz)



### ^ on the table

This parquet table from Rose & Heather is one of only four made in this design, crafted from shimmering swamp kauri found in the north of New Zealand. Featuring jarrah beading, exquisite detailing and peg and dowel construction, a sister table in darker swamp kauri was recently exported to France. Rose & Heather prides itself in offering one of the most engaging furniture collections in the world, all made locally. See [www.roseandheather.co.nz](http://www.roseandheather.co.nz).



### overflowing with bliss

Ever wanted the truly decadent experience of sliding into the bath and having the water flow over the edges? The Sok overflowing bath from Kohler is like an infinity pool, but inside, where water gently bubbles up and then continuously cascades down all sides with a gentle flowing rhythm to soothe the senses. If it sounds too good to be true, check it out at Kohler's new Auckland showroom. See [www.kohlershowroom.co.nz](http://www.kohlershowroom.co.nz). Also available from Mico stores nationwide.

Resene Barely There

### history repeats

The Resene Heritage chart has undergone a sympathetic makeover, with a few new additions to broaden the colour options and a change in design to enable colours to be displayed in technical colour groupings. This simplifies and expands the colour selection across the eras. Available from Resene ColorShops and Resellers or order your free colour chart online from the Resene website.

Resene Innocence

### < coming clean

Electrolux has launched what it calls its best vacuum cleaner ever, the UltraOne, after three years of European styling and designing.

Both UltraOne models are easy to manoeuvre (there is air in the wheels), extremely quiet, and deliver outstanding dust and dirt pick up and cleaning performance. They have a maximum power of 2200w, and come with soft wheels and a bumper handle to protect hard floors and furniture. There is a large ergonomic carry handle, a sealed washable filter, three-in-one accessory nozzle and a 12m cleaning reach.

Models retail for \$899 and \$999. For more information, call Electrolux on 0508 730 730 or visit [www.electrolux.co.nz](http://www.electrolux.co.nz).



### durable, renewable floors

New Teragren Bamboo flooring is comparable to any traditional hardwood flooring, with top durability for high traffic areas. Offering a seamless look, Teragren is available in a wide variety of grains, colours, stains and widths. It is harvested from rapidly renewable Moso bamboo and manufactured with environmentally safe materials. Available exclusively from Tileworks, call 0800 688 788 or visit [www.tileworks.co.nz](http://www.tileworks.co.nz).



### < book honours villas

A new book celebrating the villa and

some of the ingenious solutions used to transform these old houses into modern workable spaces has been published by Random House NZ. Featuring the stunning work of architectural photographer Patrick Reynolds, *Villa* showcases more than 25 architectural villa renovations from around the country, as well as villas which have remained untouched over the years. Available in bookstores from October, RRP \$75.

Resene Matakana



## strength of choice >

Resene's The Range Whites & Neutrals has always provided for up to five colour strength variations of one hue. Now the new The Range Whites & Neutrals increases this choice to up to six colour strength variations, from triple strength through to eighth strength. Colours such as Resene Perfect Taupe, Resene Craigieburn and Resene Gargoyle join the collection, which now includes 360 whites and neutrals.

Available from Resene ColorShops and Resellers or view larger samples of the new colours in-store.

Resene  
Double Perfect Taupe 

## colours of the Pacific


Resene has launched new colours to celebrate the Westfield Style Pasifika extravaganza.



Selected and designed by Westfield Style Pasifika creative director, Stan Wolfram, the palette features 34 colours such as the punchy Resene Purple Flax, Resene Red Soil and Resene Lagoon Blue, and neutral hues such as Resene White Cloud, Resene Sand Frond and Resene Dry Bamboo.

Available from Resene ColorShops or see the Resene website.

## top twenty

Resene  
Tea 

For the second time in Resene's history, Resene has launched an official top 20 paint colour list based on Resene testpot sales. The top 20 is dominated by whites and neutrals, reflecting their broad acceptance and use on a vast array of projects. These hues are generally teamed with brighter accents and features for a complete colour scheme.

### The top 20 are:

- |                                 |                                 |
|---------------------------------|---------------------------------|
| 1. Resene Tea                   | 11. Resene Sisal                |
| 2. Resene Spanish White         | 12. Resene Half Napa            |
| 3. Resene Half Tea              | 13. Resene Double Spanish White |
| 4. Resene Half Spanish White    | 14. Resene Parchment            |
| 5. Resene Quarter Tea           | 15. Resene Double Tea           |
| 6. Resene Pearl Lusta           | 16. Resene Biscotti             |
| 7. Resene Quarter Spanish White | 17. Resene Half Pearl Lusta     |
| 8. Resene Alabaster             | 18. Resene Sea Fog              |
| 9. Resene Black White           | 19. Resene Half Sisal           |
| 10. Resene Napa                 | 20. Resene Mondo                |



## Outdoor fires that make a lasting impression

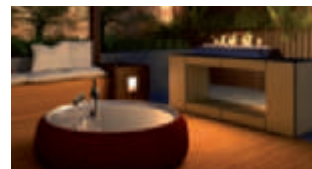
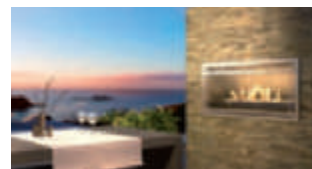
As day turns into night, the Rinnai Impression Outdoor Fire becomes the centre piece of open-air entertaining.

The new Rinnai Impression Outdoor Fire has been cleverly designed to suit your outdoor living environment. Its modular design and gas bottle connection makes it affordable, very easy to install, and will make your outdoor living area come to life.

The Impression range of one-sided, two-sided or the freestanding table-top units, provide options for every outdoor setting. As the units are modular they can be adapted to fit into any permanent structure, so you will have these quality outdoor fires installed and functioning in no time and their durable construction ensures they will last through many years of entertaining.

### Benefits at a glance

- Add style to your outdoor living area.
- The modular construction offers design flexibility.
- Easy installation.
- Units run on a 9 Kg / 45 Kg LPG gas bottle or can be converted to use natural gas.
- Simple operation.
- Quality materials ensure durability for years to come.
- Made in New Zealand to withstand our unique conditions.
- The Impression balances style and technology with value for money.



### Impress your friends with your very own Rinnai Impression Outdoor Fire

Call now to find out more information on **0800 RINNAI (746 624)** or send an e-mail to [info@rinnai.co.nz](mailto:info@rinnai.co.nz) to request a brochure be sent to you. For more information about our range of products for your home, visit [www.rinnai.co.nz](http://www.rinnai.co.nz)

# win with Habitat



### Brighten up your day

Got a dark, stuffy area you need to fix? Win this innovative and stylish Climate Control Lightbeam, valued at \$500. While brightening up those dull corners of your home with natural light all year round, you can also choose to ventilate musty smells, condensation and stale air by simply adjusting the diffuser.

Easy to install and suitable for all roof types, Lightbeams® come in a range of sizes and shapes, perfect for any room. For more information please phone Hydroflow in Auckland on 09 415 6151 or Christchurch on 03 341 1048.

Win a Climate Control Lightbeam, valued at \$500; see entry details opposite.

### Throw out the charcoal, and grill!

Using CrossRay™ technology, the Neil Perry™ T'Grill from Rinnai is a stunning performer for those with limited space or a taste for style. The unique CrossRay™ burner system uses an innovative method to cook, based around radiant infra-red plates. Cooking by infra-red is just like cooking with glowing hot charcoal. Graphite powdercoat and stainless steel construction combined with Smoothstart™ one-turn ignition and the heat of CrossRay™ make this beauty a joy to use. The LPG Bottle remains hidden securely inside the base. Used and endorsed by celebrity chef Neil Perry.

Available at Harvey Norman stores nationwide, or for more information visit [www.rinnai.co.nz](http://www.rinnai.co.nz).

Win this superb grill, heavy duty cover and Rinnai apron, worth \$1499. See entry details opposite.



-  Resene  
Guru
-  Resene  
Parachute
-  Resene  
Red Hot
-  Resene  
Sisal



### Elegant touch

Add a touch of elegance to your bathroom with a Wave vanity from Athena Bathrooms. The Wave is made in New Zealand and features a square contemporary top, with soft closing doors, rounded bar handles and comes in a choice of six cabinet colours to suit all homes. For more information visit [www.athena.co.nz](http://www.athena.co.nz).

Win a 1200mm Wave vanity in 'Silver Strata' from Athena, valued at \$1529. See entry details below.

### Electrolux's Surprisingly Clever Microwave

The new Electrolux convection microwave oven can microwave, bake or grill to become your indispensable partner in the kitchen. But more than that, by combining microwave and convection technology at the same time, you can heat pies fast without the pastry going soggy and microwave a chicken to a golden brown finish in a fraction of the time it would take to cook conventionally. The best of both worlds in one versatile appliance. For more information visit [www.electrolux.co.nz](http://www.electrolux.co.nz).



Electrolux is giving away two of these convection microwave ovens, valued at \$799 each. See entry details below.

We have some **fantastic prizes** to give away – all you have to do is write your contact details with the name of the item you'd like to win on the back of an envelope.

Remember to include your name, email address, street address and a daytime phone number.

**Entries should be posted to:** Win with *Habitat* competition, Tangible Media, PO Box 78070, Grey Lynn, Auckland 1021.

**Conditions of entry:** Competition is open to NZ residents only. All employees, and their immediate families, of Resene Paints Limited, Tangible Media and their advertising agencies, are ineligible to enter. Prize may not be exchanged or redeemed for cash. Competition closes 5pm, 26 February 2010.





# iconic inspiration

Inspired by a style icon's paint range, this soothing villa interior is a beautiful yet unpretentious home for a busy family.

When Morri Alexander looked at the Karen Walker Paints range from Resene, she knew she had to have it in her own home. She had always admired the fashion designer as a style icon, and the launch of her paint range coincided with the renovation of the Alexanders' Auckland villa.

"I just loved the colours. They all work so well together and have that lovely muddled look," says Morri. >

**Left** The back living area is the family's favourite space, opening out to a terrace and pool.

**Above** The exterior colour scheme is in Resene Foggy Grey double strength with Resene Armadillo trims, on advice from designer Peta Tearle.

words Sharon Newey  
pictures Frances Oliver



**Above** The front living room is more of a winter room, painted in Resene Quarter Tapa. The coffee table was ordered online from Taranaki.

**Above right** The wide hallway was one reason the Alexanders bought the house and has often been used as an extra play space for the boys. The extra high French doors bring light from the living room.

**Opposite** White-painted furniture dominates the dining area, while the funky metal chairs were bought off TradeMe.

**Did you know?** When painting inside consider using Resene Zylone Sheen VOC Free – it is free of unwanted volatile organic compounds, which gives you better indoor air quality.

- Resene Black White
- Resene Ecrú White
- Resene Quarter Tapa

The main colour used is Resene Ecrú White, which Morri loves for its ability to change with the light and season. “At the back of the house it’s light and fresh, but gets moodier, the further forward you go.” At some times of the day it has a strong green undertone, which Morri particularly likes.

Resene Black White has been used on all of the trims for definition. It looks particularly good against the dark-stained timber floor.

Other colours used in the house are Resene Taupe Grey double strength in son Tom’s room and Resene Quarter Tapa in the front living room. Even the exterior weatherboards are inspired by the Karen Walker Paints range – Resene Foggy Grey double strength. The exterior trims are Resene Armadillo.

Morri and her husband Pete bought the villa in 2002 and embarked on renovations a couple of years later. A dingy rear lean-to was rebuilt as the dining area. A double garage was added beside the house and slightly lower, providing the perfect space above for a new master bedroom, ensuite and small computer station.

Architectural designer Greg Clode designed the extensions: “He was fantastic and came up with some innovative solutions,” says Morri.

The couple had considered adding a second storey to the house but would have had to lower the soaring villa ceilings, “which would have been a crime”.







“At the back of the house it’s light and fresh, but gets moodier, the further forward you go,” Morri says of Resene Ecu White.



**Above** The family bathroom vanity caters perfectly for the two boys, with twin basins, mirrors and drawers.

**Right** Eldest son Tom chose Resene Taupe Grey double strength for his room – on careful guidance from his mother!

**Opposite** The butler's sink and traditional taps, from In Residence, were a non-negotiable for Morri in a kitchen designed by Neville Barnett of AQS. The cabinets are Resene Ecu White.



You have to modernise the basic structure and services “otherwise it’s all looks and no comfort.”

The house’s traditional layout was largely unchanged, as are the decorative details like the board-and-batten ceilings, deep skirting boards and tiled cast iron fireplaces. “Those are the sorts of things that give these old houses their charm,” says Morri.

She has always loved the proportions of villas but believes that you have to modernise the basic structure and services, such as insulation and the correct heating, “otherwise it’s all looks and no comfort,” she laughs.

There are often compromises, for example Morri would rather have taken down the part wall between the dining and sitting areas but it was structurally necessary. The couple also would have liked a high rock wall at the front of the property but zoning requirements disallowed it. Instead, a tall hedge adds privacy and is part of a planting plan by local gardeners Katherine Aitken and Sandra Jones.

Inside, the family bathroom was moved from the sunny west side of the house to the east while a separate shower was sacrificed to make way for a second toilet.

The vanity was made by Neville Barnett of AQS Furniture from a photo Morri showed him. He also designed the traditional-style panel-doored kitchen, finished in Resene Ecu White. “He made it such a low-stress process. Kitchen renovations can get pretty hysterical but he just took the heat right out of it.”

Morri has nothing but praise for the various design professionals involved with the renovation – often a sign that it’s more to do with her attitude as a client. Morri shrugs: “Things go wrong. You can’t get too stressed about it.”


Morri is all passion and no pretensions when it comes to explaining her decorating style. “I just like what I like.” Having lived in England for some years, she developed a taste for the simple pared-back interiors of English and French farmhouses.



She has always loved painted furniture – long before its recent return to fashion – although she likes to mix it up with timber pieces and other colours. Much of it is white but there is a lavender-grey chest of drawers in the guest bedroom and a grey trolley in the family sitting area.


She has gathered most pieces during the years; nothing too fancy or expensive. The funky metal dining chairs are off TradeMe; other pieces are from various stores around Auckland. The hall cabinet once belonged to Morri's grandparents and a painted side table in the dining area was made by her great grandfather. "I like the mix of old and new, and having things that have history."

She likes paler decorating colours because they are simple and easy to live with, are a good backdrop for artworks and allow other elements to be changed around. **H**

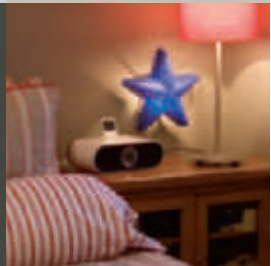



Get the interior look with Resene SpaceCote Low Sheen tinted to Resene Ecru White.

Get the kitchen look with Resene ArmourCat tinted to Resene Ecru White.

Resene Ecru White 

Get the look with Resene SpaceCote Low Sheen tinted to Resene Taupe Grey double strength.



Resene Armadillo 



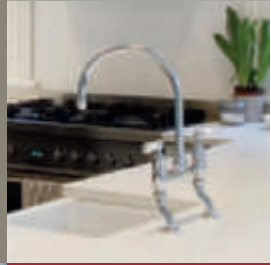
Get the exterior look with Resene Lumbersider tinted to Resene Foggy Grey double strength.


Trims: Resene Armadillo

Resene Foggy Grey 

Kitchen taps: In Residence


Kitchen: Neville Barnett, AQS Furniture




Resene Taupe Grey 



Sofas: Living Edge

Resene Hot Spot 

Resene Hot Chocolate 

turn the page for alternative looks to the Alexander dining room



^ The walls are Triple White Pointer and the trims and ceilings are Resene Half Sea Fog. The ceramic hanging birds are by Bob Steiner and the Chilli pendant light is by Katie Brown, both from [Essenze](http://www.essenze.co.nz), [www.essenze.co.nz](http://www.essenze.co.nz).

Resene  
Half Sea Fog 

illustration Bruce Bryant



>

Jonathon Room Divider,  
8-cube in ebony

Artisans Home  
[www.artisanshome.co.nz](http://www.artisanshome.co.nz)

<

Cortica cork tiles in Quicksilver

Cork Concepts  
[www.corksuples.co.nz](http://www.corksuples.co.nz)




>


Ignite curtains in Charcoal


Resene Curtain Collection  
[www.resene.co.nz/curtains](http://www.resene.co.nz/curtains)



Resene Triple White Pointer 

 Resene Vindaloo

 Resene Half Diesel

 Resene Half Sea Fog



<

Magneto dining chairs in white  
(used with Riga dining table)

Harvey Norman  
[www.harveynorman.co.nz](http://www.harveynorman.co.nz)

>

Suzannah Bridges Carpay bowl  
Jenny Smith Silk Road Circle  
Katie Brown Seeds

Essenze  
[www.essenze.co.nz](http://www.essenze.co.nz)



This intimate space has a retro-meets-contemporary look created by the mix of fantastical sculptures on the wall, objects displayed on the shelves and the orange lights suspended above the table. The silver cork floors give a modern feel and echo the splash of silver in the Resene Ignite curtains. Repetition of colour, shape and objects is the perfect way to bring balance to the space. Walls in Resene Triple White Pointer tie the elements together. The scheme has both strength and sensitivity, with boldly patterned curtains and a strongly shaped table contrasting with translucent lights and sculptural accessories.

Angela Fell,  
Resene colour consultant,  
suggests this scheme:

*Angela Fell*

phone 09 259 2736 mobile 0274 463 022 email [angela.fell@resene.co.nz](mailto:angela.fell@resene.co.nz)

alternative solution



^ The walls are in Resene Double Tuna, the trims are Resene Alabaster and the ceiling is Resene Double Alabaster.


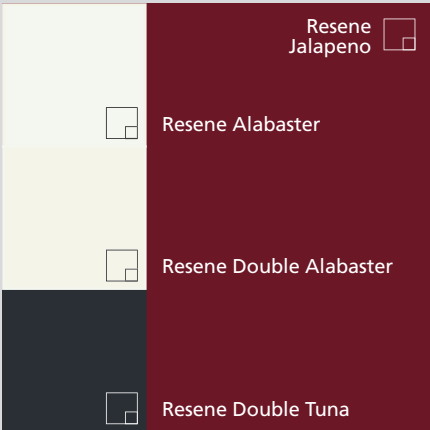
Resene   
White Thunder

illustration Bruce Bryant



<  
Valentino dining table and chairs  
Milano Furniture  
[www.milanofurniture.com.au](http://www.milanofurniture.com.au)



^  
Dinosaur Designs - Drop  
Designer Rugs  
[www.designerrugs.com.au](http://www.designerrugs.com.au)  
  
<  
Cupolone light  
Milano Furniture  
[www.milanofurniture.com.au](http://www.milanofurniture.com.au)



<  
Stark Console side table  
Moore At Home  
[www.mooreathome.com.au](http://www.mooreathome.com.au)  
  
>  
Biba mirror  
Hermon & Hermon  
[www.hermonhermon.com.au](http://www.hermonhermon.com.au)



This beautiful double height dining room is flooded with natural light and leads on to the terrace adjoining the pool. Resene Alabaster trims highlight the strong architectural character of the space and the Resene Double Tuna walls, working as a neutral, gives a sophisticated edge to the room. The red kitchen cabinetry and red accents add a warm yet dramatic touch, while the strong architectural design of the table creates an impressive statement. Use of glass as the tabletop ensures that the room has a light spacious feel and the red dotted rug adds a whimsical touch. The elegant pendant light creates impact and interest without being overpowering.

Fidelma Warner  
and Angela Piper  
of Piper + Warner  
suggest this scheme:



Phone +61 417 689 658 or +61 401 848 701 [www.piperwarner.com.au](http://www.piperwarner.com.au)



## model behaviour

**Left** Gidon's studio is in one of the quaint old boat sheds on Auckland's Hobson Bay.

**Below and bottom right** Architectural models made by Gidon for Karen Walker's latest fandeck for Resene.

**Right** The DIY ply bending machine made up of antiquated hairdryers.



## Artist Gidon Bing's eye-catching models for the Resene Karen Walker range draw on just one of his talents.

Half architectural model and half doll's house, is how artist Gidon Bing describes the captivating models he created to help promote fashion icon Karen Walker's latest paint colour range for Resene.

The plywood models were painted in Karen Walker colours, photographed and used on the fandeck of the range and in print advertisements.

The concept for the models came from Karen Walker's long-time friend, interior designer Katie Lockhart and were absorbed into the fandeck design by graphic designer Brogen Averill. "It was very much a collaborative and relaxed venture," says Gidon.

The trio share a passion for early Modernist design and aesthetics, and originally wanted to base all the model designs on mid-century beach houses from the Hamptons in the US. "That wasn't really going to work so I went away and found some additional avant-garde designs that were more interesting and practical to build," says Gidon.

"Because they weren't technical architectural models, accurate scale wasn't an issue. I made objects, like the furniture and miniature sculptures, out of scale for a more creative effect, to intentionally make the models look a bit kooky."

Gidon's work may span various disciplines but all use plywood as a base material. Huge twisted and curvaceous sculptures are suspended from the ceiling of his boat shed studio on the edge of Auckland's Hobson Bay, while relief sculptures hang from the walls. Biomorphic-inspired shapes are painted onto ply and finished in coloured stains and shellac. A prototype bent wood armchair sits in a corner, dwarfed by vast work benches.

Since the launch of the fandeck earlier this year, Gidon has received interest in his models from overseas. "There's a whole cult for miniatures out there that I never knew existed. Dolls house enthusiasts, and design aficionados who have a passion for Modernist houses. They can't collect the real thing so they collect miniatures."



He has also been featured in international magazines like *Wallpaper*, *Casa Da Arbitre*, *Gioia* and *In Design*.

Gidon's love of plywood is a blood legacy; his Czech architect grandfather, Henry Kulka, helped pioneer the use of plywood as an interiors material locally in the 1940s. "I grew up around the material and there were always scraps of ply around to play with and create things from. It was familiar to me. Artists tend to work with materials that are utilitarian, and available."

Gidon shares his grandfather's admiration of honest natural materials and simple elegant forms.

His passion for furniture design may have blossomed when Gidon was about 12, but his university studies went in other directions – into anthropology and comparative religion. While travelling on a postgraduate scholarship, he spent time working on an archaeology dig in the Middle East and became interested in primitivistic art. Those often fluid, organic forms have influenced his work ever since.

While his technique is largely self-taught, his wood curving uses the same principles as those pioneered by legendary furniture maker Thonet in the early 19th century.

His studio equipment is a mix of traditional Japanese methods and bizarre apparatus borne of Kiwi ingenuity – like the wood steamer mounted with antique-looking hairdryers. It's a work of art in itself.

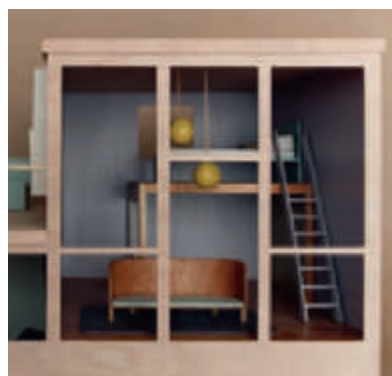
While Gidon admits to never being disciplined enough to exhibit locally – pieces sell before he can collect enough to warrant a solo exhibition – he has shown pieces overseas, including in Tel Aviv currently. He accepts commissions, like his series of outdoor sculptures for Veuve Clicquot, when the prestigious French Champagne house launched their new Rosé here last year. And, of course, his models for Resene.

He hopes to show in Australia soon, and says he finds the local art scene has an off-putting division between what is seen as fine art and craft-based modern art. "It's a shame because in other countries, in Japan for example, there is much less of an artificial division. This is probably because they have a strong tradition for producing and appreciating fine craftsmanship and suffer much less from what is really a type of cultural snobbery that associates craft with manual labour," he says.

At the moment, between developing concepts for more furniture, architectural models, sculpture and a range of light fittings, Gidon is enjoying working on something close to his heart – pieces of furniture made from bent ply for his one-year-old daughter Eli. H



"I grew up around the material and there were always scraps of ply around to play with and create things from. It was familiar to me."



- Resene Ecrú White
- Resene Powder Blue
- Resene Weathered Yellow

The Karen Walker fandek is available free from Resene ColorShops or order online from the Resene website.

words Sharon Newey pictures Mark Heaslip

## stow it

Lack of storage is the down side of many houses, but there are plenty of clever ideas and products to help you stow your stuff.

Let's face it, we're an acquisitive lot. Try as we might to contain our consumerist urges, with all the beautiful stuff in stores, it's always been difficult to be minimalist. Even now that we've given in to more extravagant accessorised interior havens that wrap us up in comfort, the things we gather around still have to be kept under control. For an orderly sense of calm, contain the clutter with plenty of stylish, well-planned storage solutions throughout your home.

For those planning new homes or renovating, there are many fabulous ideas to incorporate from the start. But for those stuck with older homes, notoriously lacking in storage space, it's definitely a challenge to keep tidy. Check out some of the following ideas.

### Kitchens

Organisation is the key to well-designed, good-looking kitchens, says Linda Christensen of Kitchens By Design. "The secret is compartmentalising things. It basically means putting similar-sized objects together or storing things with a similar function in the same place. You don't load everything into one big drawer and scramble around looking for it."

Linda says all the big hardware companies like Hettich and Hafele have ready-made storage solutions for compartmentalising. But you can create your own affordable solutions with wooden, metal or woven baskets or plastic storage kits in all shapes, colours and sizes. Take a

look at what you have inside your drawers, measure up the space and wander down to the local plastics store.

Joanne Godding, also of Kitchens By Design, says pull-outs (usually in the form of wire racks) are a super-efficient way of saving space. Even drawers have become better designed. In older-style cabinetry, drawers don't usually run the depth of the space but modern versions are more stable and can extend right out for more space and better accessibility, she says.

Every cupboard can have a pull-out solution behind it, shaped and moulded to maximise the full extent of cabinet space. Frames can also be fixed to the back of cupboard doors and integrated with pull-out railing systems to hang containers for storing soaps, brushes, cloths, tea-towels and detergents.

Look out for narrow pull-outs, 15cm wide for vertically storing baking trays, oils and sauces.

Traditional pantries have gone out of fashion as they waste space with gaping U-shaped shelves. Instead you can fill up the space with trays, shelves and... pull-outs.

To remove clutter from benchtops, add rails to under-used walls to hang mugs, foil and wraps. Teamed with lighting, hanging off the wall is also the perfect place for a cookbook holder.



**Above** Kitchen storage continues to improve in sophistication thanks to systems from Hettich like this Cargo pull-out pantry and Innotech drawer, and Hafele's modern version of the lazy susan.

top tip

Paint the inside or outside of wardrobe doors in Resene Magnetic Magic and finish in your favourite Resene topcoat. You can then use magnets to hold items in place. Or combine with topcoats of Resene Blackboard Paint.

words Vicki Holder



**Left and below**  
 Look for opportunities for more casual storage, for example in baskets (from California Home & Garden, Wellington) or in glass-topped coffee tables (from Rose & Heather).



- Resene Matterhorn ■
- Resene Mojito ■
- Resene Woodstock ■

We've become very consumer-driven. We buy lots of stuff, but also want an uncluttered, minimalist look.

### Living rooms

For the living areas, choose furniture that has a double purpose, says interior designer Karen Fergusson. "Long ottomans where the lid lifts up; coffee tables with drawers; book shelves with baskets or built-in cupboards; windows seats with storage underneath where you can hide all the magazines and toys. They're all good ideas," she says. The television can look good on an old oriental chest, or hidden away in a chest with cupboards. These days, the stereo hardly needs to take any space at all when you can download your whole collection onto an MP3 player or iPod and play it through discreet speakers.

### Bathrooms

Storage sunk into the wall behind mirrored cabinets is a great way of maximising space in bathrooms, says Joanne Godding. But if you want to add storage to existing bathrooms, there are many freestanding units available. For traditional solutions, try the Australasian store chain of Early Settler and Recollections. Old-fashioned train luggage racks are great for rolled towels.

Natalie Du Bois of Du Bois Design says there's always room in the wall cavity that can be used for extra storage. "You don't need deep storage for medicines and potions." There may even be a cupboard opening from the next-door room that you can make better use of as part of the bathroom.

Look out for tall, freestanding, mirrored tower storage from Inovo in Auckland's Parnell, says Natalie. "It sits on a pole and can turn and swivel. It makes the bathroom look spacious and beautiful."



## SPLASHBACKS

With a professionally developed colour-range and an internationally tested and proven product, make sure you talk to experts in decorative glass and glazing.



Auckland • Bay of Plenty • Wellington • Nelson  
 Christchurch • Dunedin • Southland  
 Freephone 0800 660001 www.graphicglass.co.nz



## Bedrooms

If you're building a new home, chances are you'll opt for a walk-in wardrobe attached to the bedroom. But owners of older homes must consider what they can do to maximise existing spaces. If your bedroom is small, make the most of every bit of space by consulting a wardrobe specialist who can fit out the space with rails, pull-out baskets and racks to squeeze everything in.

Matt Taylor of Boston Wardrobes says in the past 20 years we've become very consumer-driven. We buy lots of stuff, but also want an uncluttered, minimalist look. "New wardrobe systems allow people to deal more effectively with all their clothing, handbags, shoes and so on."

Matt says the traditional, shelf and single rail wardrobe wastes a lot of space because 90% of the clothes we wear require just over a metre to hang up. The double hang wardrobe available from wardrobe system companies doubles the amount of storage space in a wardrobe. They're not necessarily bigger but they use space more efficiently.

The latest generation of wardrobe systems are more flexible and can be adjusted as your needs change. "Our Innova range has aluminium uprights and everything is adjustable in height. New systems can chop and change at your will without the need for installers."

## Children's rooms

Karina MacLeod of Tom Tom Jak (formerly Treehouse) says having a place for everything in a child's bedroom makes it easier to keep tidy, but it needs to be accessible to children. "Shelving on the walls is good for books and toys. You can stash more if you put things in baskets and boxes. Underbed storage is a space not often used



**Above** Long gone are the simple pole and shelf arrangements for wardrobes, replaced by these clever fitted systems from Boston Wardrobes.

efficiently. Bins on wheels for toys and games can be rolled away when not in use and rolled out ready for action.

"Of course you need good wardrobe systems for clothing. And hooks and coat racks are great for bags and jackets. Children need to be able to get to them quickly. Even just large boxes on wheels make it easy for keeping sports equipment and bags tidy."

Not everything needs to be hidden away. Karina also suggests pin boards for keeping papers up off the floor. Desks with lift-up lids are a good idea because they help keep papers and pens neat. **H**

Go into the draw to win one of two special prizes\*

**WIN 20%** of the weatherboards required to clad your  
**NEW HOME OR RENOVATION**

\*Each prize up to a maximum of 250 lineal metres  
For more information  
call 0800 768 253  
or visit [www.smartclad.co.nz](http://www.smartclad.co.nz)  
to enter the promotion

By using our revolutionary **hidden fixing system**, it'll be easier and cheaper to install (up to 50% faster!) traditional profile bevelled back **radiata pine weatherboards**.

**SMARTCLAD™**

Only our timber weatherboards have the intelligent hidden fixing system

If you can't change the world,  
why not change your walls?



Give a plush yet tailored look to an interior with this special-effect wallcovering: Barcelona from the Vision Skins collection. Contemporary, classic and clever concepts for dressing up walls.

To find out where to see more, call 0800 Wallpaper (925572737) and visit [www.visionwalls.co.nz](http://www.visionwalls.co.nz).

**VISION**  
wallcoverings

DRESS UP YOUR WALLS



## keep your cool, cobber

An inner-city Australian house uses eco principles and new technology paint to keep cool and lessen its impact on the environment.



**Above** The modest cottage frontage belies the architectural extension at the back.

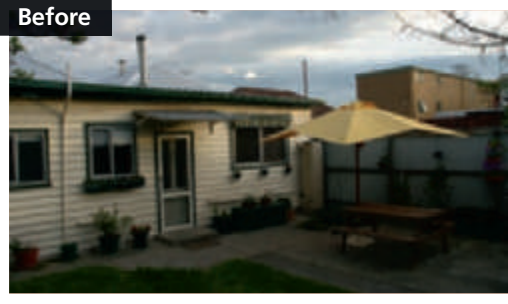
The Australian climate is known for its extremes and searing heat. Humans can slip on a hat and slap on some sunscreen, and now an eco-friendly house in Melbourne is protected, thanks to Resene Cool Colour technology.

When Kiwi-born architect Nic Owen was commissioned to renovate a run-down double-front Victorian cottage owned by the Cooke family, the brief included making it environmentally friendly.

As a result, the house now boasts a list of features not common in older inner-city homes. Aside from the Resene Cool Colour paint on the exterior, it uses plantation timbers and plywoods, both inside and out, has a huge 20,000 litre underground rain water tank and a solar hot water system. The house design also encourages natural cross-ventilation. >



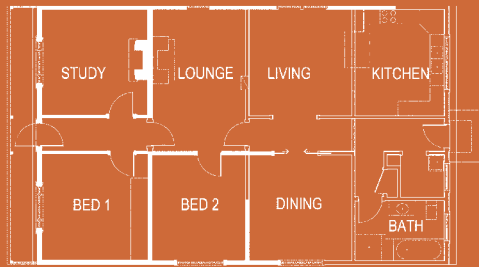
**Before**



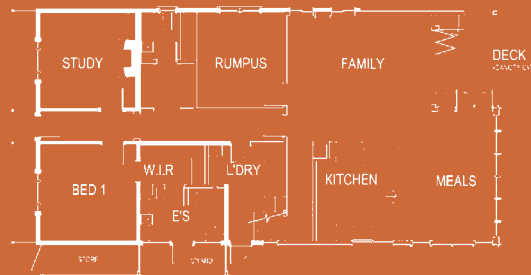
**Left** The untidy rear of the house before renovations.

**Far left** Plentiful windows make the most of the sun's heat while a retractable shade cloth over the deck controls the sun.

**Below** The shade cloth frame becomes a sculptural element while deep frames around the upper windows control sun and add privacy.



**Before** Ground floor plan



**After** Ground floor plan

**Did you know?** Sunlight energy is made up of 44% visible light, 5% ultra-violet light and 51% infra-red light. Traditionally light reflectance values have been used to define which colours are suitable for heat prone substrates, however they ignore the effects of ultra-violet and infra-red light. Resene Cool Colour pigments are designed to reflect infra-red light that we can't see, which is why they stay cooler than standard colours.



The 'Comfort' from Marca Corona of Italy.



The Cookes, who have young children, wanted the renovation to give them extra space and an exciting place to live. All this on a small piece of land in a highly protected heritage precinct. In response, Nic Owen's design solution employs clever use of light and space combined with a sprinkling of colour.

The overall design aesthetic was to be clean and timeless. To avoid the stark white often mechanical feel of many Modernist buildings, natural timbers and materials were used throughout the house, giving the spaces a warm and cosy feel. Splashes of colour and interesting architectural elements make the house an exciting place to live.

Although the interior scheme is mostly neutral (Resene Blanc), hot orange (Resene Phoenix) is used as an accent and the upstairs bedrooms have feature walls in Resene Norway (green) and Resene Jordy Blue.

The rear of the house contains the main living area and kitchen. The feeling of openness and light is enhanced with skylights and well-placed windows yet the power of the sun is controlled with large overhanging eaves and a retractable shade cloth set within a rigid frame over the deck. This device is both the architect's and owner's favourite element in the design. When extended, the shade cloth is a practical complement to outdoor living; when withdrawn, it allows the frame to become a strong architectural feature.

With this area facing due north, the shade cloth was essential as was the Resene Cool Colour technology – driven largely by the desire to use a dark colour (notorious for attracting heat) such as Resene Bokara Grey. The front exterior of the house is painted in Resene Friar Grey with Resene Rakaia trims.

On the new upper floor, a deep frame around the windows also keeps out the hot summer sun and provides privacy to the bedrooms within.

The result is a house that is innovative, stimulating and demonstrates an environmentally sustainable design. "The house is both a machine for living and sculpture to live in," says Nic.

And as Malcolm Cooke says: "We are loving our new home. It is a real luxury to have the house adapted to our specific needs, in a way which maximises the available space. Nic did a fantastic job at combining that very utilitarian objective with our desire to ensure it was also beautiful and well crafted. The design offers us alternative uses of rooms such as the playroom as our needs change." **H**

# Dressing up your habitat

EUROPE'S FINEST  
CERAMIC TILES  
FOR YOUR –

LIVING AREAS  
KITCHENS  
BATHROOMS  
OUTDOORS

Importer, Supplier & Certified  
Installer – *your complete tiling  
solutions provider*

If you would like assistance  
with designing a project -  
please call our sales team on

**0800 688 788**

to find your nearest stockist  
visit our website -

**www.tileworks.co.nz**

**TILEWORKS**  
Providing creative, sustainable, building surfaces



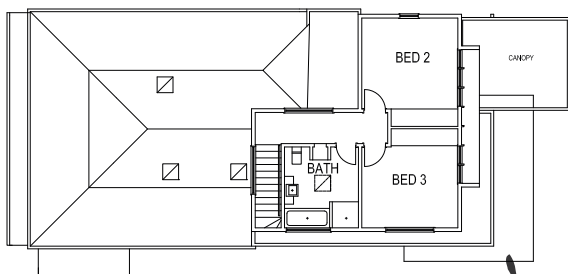


Far left Timber is used in the open-plan kitchen to counteract any starkness.

Left The ensuite actually opens to a private courtyard.

-  Resene Fuscous Grey
-  Resene Jordy Blue
-  Resene Norway
-  Resene Phoenix

Splashes of colour and interesting architectural elements make the house an exciting place to live.



After First level floor plan



### Cool Colours

Traditionally, houses painted in dark colours have been difficult to maintain, given that they attract the sun's heat, putting stress on both the paint and the cladding. Resene Cool Colour technology makes painting exterior surfaces in dark colours both easier and safer. It can be used on all sorts of exterior materials and applications, from weatherboards and concrete to windowsills.

A Resene Cool Colour looks the same as normal, but reflects much more heat. The pigment technology allows the coating to retain its usual visible shade, but gives heat back from the surface, reducing stress on the coating and substrate, and limiting subsequent heat-related damage. The technology also minimises the buildup of unwanted heat in the house, keeping cooling costs down.

Resene Cool Colour technology is available in a wide range of popular Resene colours and exterior finishes from your Resene ColorShop.

Climate Control Lightbeam® - looks like an expensive light fitting!



Wake up those sleepy dark zones of your home with natural light and ventilation with a stylish Climate Control Lightbeam®. While brightening up those dull corners of your home with natural light all year round, you can also choose to ventilate those musty smells, condensation and stale air by simply adjusting the diffuser.

Easy to install and suitable for all roof types, Lightbeams® come in a range of sizes and shapes, perfect for any room.

**Hydroflow**  
DISTRIBUTORS LTD

Call NOW to find your nearest stockist:  
Auckland phone 09 415 6151  
Christchurch phone 03 341 1048  
[www.hydroflow.co.nz](http://www.hydroflow.co.nz)

# nice house, shame about the carpet...

It's a large part of your home's fittings but does carpet come with an instruction manual?

When you move house, it's considered good manners to leave behind all the manuals and warranties for any appliances and instructions on how to set the alarm, should you have one. Most thoughtful. But how often are you left with any information on what brand of carpet (and style and colour) you have on the floor, and how to look after it? Yes, thought so. Hardly ever.

When you consider that carpet is one of the more expensive and long-lasting chattels in your house, you'd think that it might be first on the list of things 'you might want to know'. Fortunately Cavalier Bremworth has been designing and making carpet in New Zealand for 50 years and has learned a thing or two about how to care for

your carpet, and how to cope with the inevitable spills and stains that will occur on any floor.

They have a comprehensive carpet care section on their website but here are some of the fundamentals of carpet care that might save you some grief (and expense).

## Basic carpet maintenance

The great news about wool carpets is they have a natural inbuilt dirt repellent. The unique scaly structure of the wool fibre means it resists soiling and releases dirt easily. As with any type of flooring however, it will need regular care to stay looking its best.

- Vacuum regularly, once or twice a week depending on traffic.
- Promptly attend to spills and stains.
- Never rub, brush or massage the carpet when it is damp or wet as this permanently damages the pile.
- When necessary, have the carpet professionally steam cleaned by a reputable operator.

## Dealing with spills and stains

Any accidental spills and stains need to be dealt with immediately to avoid permanent damage.

The first and most important rule is 'contain the stain' to stop it spreading further. Blot up any liquids straight away using a clean dry towel or paper towel and scoop up solids with a knife or spoon, being careful not to push the solid further into the pile.

Only then should you begin to treat the stain.

## Wet stains

The hotter and darker the substance, the more difficult it can be to remove. In years gone by, tea and coffee were often used as a dye which is why these can be so hard to remove – drinking a latte is so much safer!

If you act promptly, however, you should be able to get liquid stains out. Once you've done your initial blot-up of the stain, try Cavalier Bremworth's new stain remover specifically designed for wet stains



## Myth busted!

Steam cleaning your carpet is bad because it removes the lanolin. No it doesn't. Carpet makers do. 97% of it goes in the wool scouring process before carpet is made because lanolin is a greasy substance that attracts dirt.

(look for the blue and brown can). It looks like a shaving foam and will gently dissolve into the stain and help lift it from the carpet. Simply blot up once it has dissolved and then re-apply until the stain is gone. Some tricky stains might take two or three sprays.

If you don't have a can handy, use some lukewarm water. Try gently squeezing water from a sponge rather than pouring water onto the stain directly which can over-saturate the carpet and damage the backing or create water marks. Blot up in the same way described above and repeat as required.

For a full list of stain remedies, visit [www.cavbrem.co.nz](http://www.cavbrem.co.nz) for advice.

### Dry stains

Most oily or greasy stains can be removed, even after a period of time. However, certain stains may have a chemical reaction with the carpet fibre and can cause irreversible damage – curry would be a classic challenge and liquid make-up is nasty, too.




Cavalier Bremworth has produced the best-selling stain remover for more than 20 years – now rebranded into a new orange and brown can. This was rated by *NZ Consumer Magazine* as the top-rated dry stain remover product in their 2007 survey and continues to be very effective, so much so that the company receives bulk orders from car dealers and mechanics who love the fact it gets the grease off their showroom carpets!

However, you will need to leave the stain to dry off before you apply the dry stain remover. This dry stain cleaner is also useful when you discover those stains a day or two after the guests have gone!

### No need to panic!

If you act promptly and contain the stain, you are certainly well on your way to minimising any damage to your carpet. Then just take the time to understand what remedy is best suited to the stain, and apply accordingly. All the advice you need is on the Cavalier Bremworth website, [www.cavbrem.co.nz](http://www.cavbrem.co.nz) **H**

**Far left and right** Three of the threats to carpet care – pets, drink spills and kids. Carpets shown are Elysium, Trojan Twist and Seregenti.

-  Resene Cocoon
-  Resene Half Pearl Lusta
-  Resene Wind Talker



### Fascinating fact

Research carried out by Cavalier Bremworth showed clear gender differences in the stains inflicted on carpet. Men were more likely to spill gravy and sauces, women would spill jam and butter. With teenage girls it was make-up (the vilest stain) and for teenage boys it was muddy feet and flavoured milk.





## home box office

Grab the popcorn, turn down the lights and fire up your own cinema experience at home. We track the latest technologies.

As recently as five years ago, having a home theatre simply meant you had your television hooked up to external speakers. While this is still where the road begins, rapidly advancing technology means the combination of equipment in your living room is limited only by your imagination and your budget.

As the name says, the most basic function of home theatre is to give you a cinematic experience at home. These days, this starts with two things: high-definition television (HDTV) and surround sound.

When choosing a television, you'll have two main choices – definition and format. Definition can be either standard (SD) or high (HD), and the format is usually LCD, plasma or projector. The definition isn't much of a choice at all, really – if you're even entertaining the idea of building a system, it must be HD. Whether you choose LCD, plasma or a projector is entirely a matter of preference and logistics.

There's no truly right or wrong answer – each format has its pros and cons. LCD weighs less than plasma, so is more suited to wall-mounting.

Plasma is normally better for watching action scenes, because of its faster response times, although LCD is fast catching up.

Many people believe a projector is necessary for that true home cinema experience, but if your room isn't big enough, you're wasting your time. Perhaps its biggest drawback is that the room needs to be completely dark – which usually means specialty curtains as well. One of the major attractions of a projector, however, is that the unit and the screen can be hidden away when not in use, leaving your interior decoration and artwork to shine.

### Audio action

Whichever type of television you choose, you'll need to pair it with some high-quality audio if you're to get the best out of it.

Dolby Digital sound systems revolutionised the cinema experience in the early 1990s. Dolby traditionally uses six speakers, and most likely, your surround sound system at home will too. This is referred to as a 5.1 system – five speakers and one subwoofer. As a general

rule, these six speakers run off one central receiver, which is the hub of your system, through which you run your television and any other equipment you choose. If you only remember two points about surround sound, it's not to scrimp on the receiver, and heavier equipment usually means better quality.

### Flexible programming

But there's no point having a great system if you're just going to be sitting there aimlessly flicking through channels. A good way is to pre-record all your favourite television on MySky. The major benefits of MySky are that you can record two shows at once, while watching

“For the technophiles, the next major frontier is likely to be virtual reality.”

a third, and you can record a whole series of your favourite show at the touch of a button. You also needn't worry about recording the wrong channel accidentally. Many people choose to get both MySky and a DVR, so they can burn shows they record on to DVD, freeing up room on their MySky hard drive.

Sky has recently released MySky HDI, which is more compatible with the newer HD televisions. It can even upgrade non-HD programs to a clearer HD format.

An alternative to MySky HDI is the TiVO, which comes with a raft of features, including a higher price tag. In addition to being able to record up to eight channels at once, TiVO can connect your home entertainment system to your music, photos and internet. This step represents the next level of home entertainment – connecting your television to your home network.

Generally speaking, it has only been early adopters who have used TiVO, because it hasn't been on sale here. But TiVO is now set for a pre-Christmas launch and with its broadband features and Freeview compatibility, it is likely to be popular.

Another way to synchronise your computer with your home entertainment system, is the more mainstream Playstation 3 (PS3), which can connect to your home network either directly or wirelessly. And if a Playstation 3 sounds like something an eight-year-old would play on, that's because it is – at least on the surface.

So, if today's ideal home theatre is fully integrated with the computers on your home network, what does the future hold? The most immediate improvement will be the continued development of HDTV, as all of our channels move to 100% HD broadcasting. There will also be more television and new-release movies available online, which will make linking your television to your home network more essential.

For the technophiles, the next major frontier is likely to be virtual reality. There are already wired gloves that give haptic (touch) feedback to users, and head-mounted displays that allow you to interact with games like Second Life or television. The latest research is even attempting to simulate smell.

As technology gets cheaper, these will become more accessible, but the word is still that the entertainment media has misrepresented the scope of virtual reality technology, and that what you see in the movies is still a few years away from your living room. So you may have to be content with your HDTV and recliner chair for a few more years yet! **H**

words Anto Coates picture iStock

## Gaming for all

First, a quick history lesson. About eight years ago, gaming consoles went from being the sole preserve of children and teenagers, to being a part of home entertainment systems everywhere. This was largely due to the built-in DVD players of the Sony and Microsoft consoles, back when DVD players were still a relative novelty. This gave kids a formidable bargaining tool with parents – “But Mum... you can watch movies on it too!”

Nearly a decade on, seventh generation consoles are available – the PS3, Xbox 360 and the Nintendo Wii – all of which are internet enabled. Of the three, the PS3 is most at home in a living room, as it has the latest Blu-ray disc technology, which is widely considered to be the future of home video. Blu-ray produces a better quality picture and has more storage capacity than a DVD.

Investing in a gaming console for your living room can be a double-edged sword. While its other capabilities may be impressive, it must be remembered that it is still primarily built for gaming, and any children hanging around (think anyone under 30) will be keen to monopolise it.



# sea change

A new bach ensures this much-loved family holiday location will continue to be used and treasured.

words Liesl Johnstone



**Above** High clerestory windows not only bring in light but accentuate the different ceiling heights.

**Right** The bach is used year-round, hence the fireplace.

- Resene
- Half Rice Paper
- Resene
- Rice Paper
- Resene
- Quarter Parchment

Going to the bach has always been about escape, and is often entwined with nostalgia. It's also about being more connected with the seasons, and the beauty of mountains, lake, river or sea.

But can that sense of escape really happen when your bach is cool, modern, and just 25 minutes drive up the road?

The owners of this Leithfield Beach bach, Jenny and John McCarthy, are emphatic that it can. Leithfield Beach is just north of Christchurch.

In fact this piece of untamed, sometimes dramatic coastline holds so many extended family memories, going back as far as Jenny's grandmother, that building here was the obvious move. "This is where we feel a sense of belonging," she says.

"There's just no way I would ever consider selling this land," Jenny says of the plot which used to be home to a diminutive 1930s weatherboard bach. The old house might have had character, but it was becoming increasingly run-down and leaky.

Jenny was attached to certain characteristics of the old dwelling, such as its L-shape. Other features – like the sound of the sea and the smell of macrocarpa trees after rain – couldn't be lost but could be emphasised with a great new design. Enter architectural designer John Ayers of Creative Studios, who was first approached about masterminding a new bach for the site three years ago.

John Ayers normally designs restaurants, bars and commercial spaces. As well as being his first ever bach, this project proved to be his favourite, that year. >








Both Jenny and John wanted subtle materials and colours that blended with the tones and textures of the coastal setting.



**Above** The open-plan configuration of the living, dining and kitchen area lends casualness to the bach.

**Left** A galley hallway runs like a spine in front of the bedrooms.

-  Resene Deep Khaki
-  Resene Lifesaver
-  Resene Palm Leaf





The brief John McCarthy gave designer John was “boxy containers meet urban style”. The couple didn’t mind if the house was noticeably different from the older neighbouring houses, however, both Jenny and John wanted subtle materials and colours that blended with the tones and textures of the coastal setting.

Next, Jenny showed John the furniture and artwork which needed to be accommodated within the design. Plus an existing tree whose body and soul were not to be parted with on mere account of the new house or its deck.

John laughs, as he recalls that his initial plan had the tree’s branches rising through the middle of the dining table. John’s amended plans moved the house forward by two metres. The sculptural tree now takes pride of place between house and sea in the grooved kwila decking, and reminds John of “the bonsai-looking start of a Japanese garden”.

Jenny got her L-shaped house while her husband received his shipping-container image and a highly functional, energy-efficient house to boot.

John Ayers is adamant about making the best use of solar energy. The sun’s feel-good factor should never be underestimated, he stresses. He always strives to “play God with available sun and light; to move and control them as much as possible”.

For instance, the bach’s entranceway is what he describes as a ‘heat-sump’ with its carefully positioned glass panels and quantities of polished concrete to trap the sun’s heat. Both heat and light are channelled through the house, not forgetting or excluding the bedrooms. Each of the three bedrooms faces north and has sliding glass doors to outdoors. Every space opens up, allowing cooling breezes through when needed. >



**Top** The new bach certainly fits the owners’ brief for “boxy containers meet urban style”.

**Above** The front door in Resene Deep Khaki is surrounded by a dramatic extra-high entrance.



**Above** Resene Palm Leaf is used as a feature wall in one of the bedrooms.

The kitchen, Jenny's hub, gets all-day sun, as well as her coveted view through the big macrocarpa that stand on the dunes. The trees provide excellent shelter from Canterbury's prevailing easterly winds. In addition, John designed the garden's east boundary wall to roll aside for access to the dunes.

"One thing I didn't want for this bach was a design trying to look too temporary, with entire house walls opening up and disappearing. I think that can look a bit contrived," John says.

The timber exterior is a mix of vertical and horizontal cedar shiplap finished in Resene Waterborne Woodsman oil stain in Natural. Kwila was chosen for the floors. Outside it's grooved for the large expanse of decking. Inside it's polished.

John's background in designing entire bar and restaurant scenes means he's equally adept at interior fit-outs. The walls in the living areas are painted Resene Quarter Parchment, Resene Rice Paper, and Resene Half Rice Paper. They complement the browns and touches of red in the McCarthy's large Aboriginal and Samoan wall hangings. Other colours chosen were Resene Incognito, Resene Lifesaver, Resene Palm Leaf, with Resene Deep Khaki for the front door.

Although he strives to possess no signature style, John Ayers is happy with the way this bach has a connection to its humble predecessor, and to its surroundings. He's also pleased with the connection between inside and out, and of each room in relation to the others.

The McCarthys, for their part, are finding the bach increasingly bringing the family together. "We underestimated how regularly this place would draw us back... even sometimes during the week," Jenny says. "We're finding we absolutely love it." H

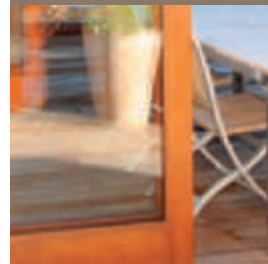


Front door: Resene Lustacryl tinted to Resene Deep Khaki.

Resene Palm Leaf 


Look after your wooden deck – stain with Resene Kwila Timber Stain, Resene Woodsman Decking Stain or Resene Furniture and Decking Oil to enhance its natural good looks.

Resene Incognito 



Joinery: cedar sashes within kwila frames

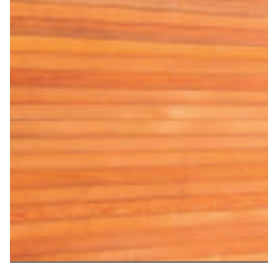
See the Resene Exterior timber stains colour range for exterior timber colour options.

Resene Cedar 




Get the look with Resene SpaceCote Low Sheen tinted to Resene Lifesaver.

Resene Lifesaver 



Get the exterior look with cedar finished in Resene Waterborne Woodsman oil stain tinted to Resene Natural wood stain.

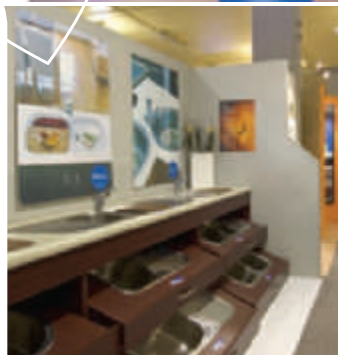
Resene Natural 

Resene Incognito 

turn the page for two alternative style solutions



"We need to make some extensions, so we'll be back for more ideas."



Real inspiration that's always on show

OPEN 7 DAYS A WEEK. FREE ADMISSION. Auckland The Strand, Parnell / Christchurch Mandeville St, Riccarton / Wellington Cnr Esplanade & Lower Hutt St

# alternative solution



^ The walls, trims and ceiling are Resene Milk White from the Resene Karen Walker range. The fence is Resene Tiri and the deck stain is Resene Iroko in Resene Woodsman Decking Stain. Accents are matched to Resene Clockwork Orange, Resene Pulse and Resene Crisp Green. The striking rug is World from Designer Rugs.


Resene  
Grain Brown 

illustration Bruce Bryant



<  
Miller corner sofa  
Forma  
[www.forma.co.nz](http://www.forma.co.nz)  
In Milano fabric, colour Shale  
Warwick Fabrics  
[www.warwick.co.nz](http://www.warwick.co.nz)



^  
Tan leather Mart chair by B&B Italia  
Matisse  
[www.matisse.co.nz](http://www.matisse.co.nz)



<  
Stool 60 used as a side table  
Thonet  
[www.thonet.co.nz](http://www.thonet.co.nz)



<  
Royal Botania Flexy Table with teak top  
ECC Lighting & Furniture  
[www.ecc.co.nz](http://www.ecc.co.nz)



>  
Bitossi Line Rimini Corallo,  
Bitossi Line Lobster, Bitossi Bicolore  
Matisse  
[www.matisse.co.nz](http://www.matisse.co.nz)



**Rochelle Andrews**  
from Trinity Interior Design  
suggests this scheme:

My approach with this room was to create a neutral palette providing a great starting point to introduce colour and depth with furniture, finishes and accessories. The main focal point is the feature rug, which provides some vibrancy and fun to an otherwise neutral space. Internal and external elements are tied together due to their strong visual connection. The existing concrete block wall has been lined with Fijian kauri plywood veneer. The introduction of this natural material together with matching shelves creates an attractive backdrop for select ceramics and objects. Furniture items have been selected due to their simplicity and comfort creating a warm, playful and inviting environment.

*RMAnd*

phone 09 486 0599 mobile 021 108 5128 email [rochelle@trinityinteriordesign.co.nz](mailto:rochelle@trinityinteriordesign.co.nz)



^ The walls are Resene Lemon Twist, the blockwork wall is Resene Nebula, the ceilings are Resene Rum Swizzle and the trims are Resene Sambuca.

Resene  
Wan White 

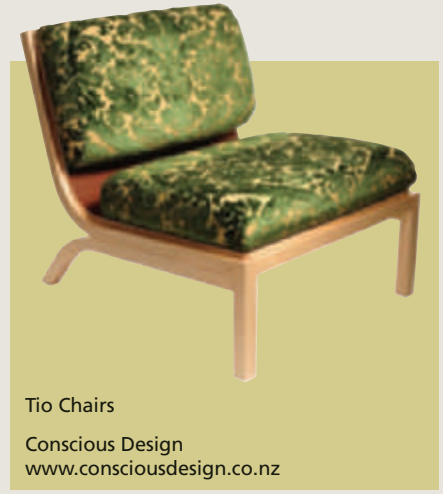
illustration Bruce Bryant



2.5 seater Wakefield sofa

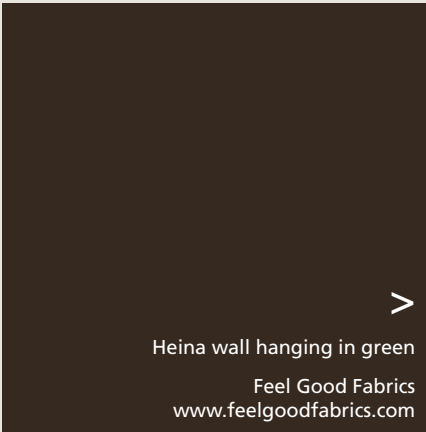
David Shaw  
[www.davidshaw.co.nz](http://www.davidshaw.co.nz)

in Kit & Kaboodle, colour Rice  
Warwick Fabrics  
[www.warwick.co.nz](http://www.warwick.co.nz)



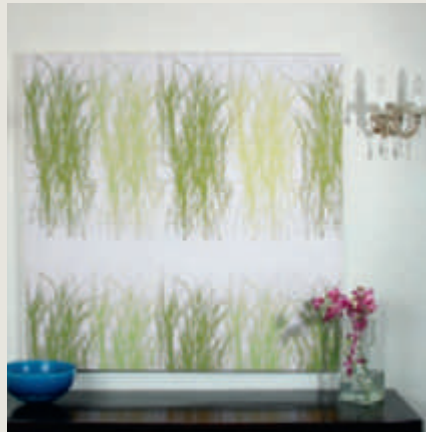
Tio Chairs

Conscious Design  
[www.consciousdesign.co.nz](http://www.consciousdesign.co.nz)



Heina wall hanging in green

Feel Good Fabrics  
[www.feelgoodfabrics.com](http://www.feelgoodfabrics.com)



Resene Rum Swizzle 

 Resene Lemon Twist

 Resene Nebula

 Resene Sambuca



Extra-large Coast marine beanbags in colour Spa

Coast New Zealand  
[www.coastnewzealand.com](http://www.coastnewzealand.com)



Ecodure bamboo flooring in Natural (wide plank)

Bamboo Flooring  
[www.bambooflooring.co.nz](http://www.bambooflooring.co.nz)




This scheme echoes clean, fresh coastal light and colours, using hints of fresh yellow like Resene Lemon Twist, soft blues (Resene Nebula) and greens and light sandy-coloured flooring. The furniture is also relaxed and informal, with comfortable Tio chairs and outdoor beanbags adding a fun element (these can also be dragged outside onto the deck). A slouchy low sofa is perfect for sprawling on. This scheme helps bring the outdoors inside and creates a beach holiday feel where you can kick off your jandals and relax.

Eileen Law,  
interior designer, suggests this  
alternative scheme:

phone 03 442 7998 mobile 021 0246 6558 email [eileen@eileenlawdesign.com](mailto:eileen@eileenlawdesign.com)

Resene  
Clouded Blue 

Resene  
Moby 

Resene  
Red Berry 

Resene  
Wan White 

## kid's zone

Playfulness and colour are all a part of a great-looking kid's bedroom.

Making over your child's bedroom is the one time you can loosen up a little. The creative team from interior specialist store Gorgi, Kirstin Bailey and Anna Church, has these inspirational tips;

- Crisp colours provide the perfect backdrop for treasured accessories. Keep colours simple as heavily themed rooms can lose their appeal quite quickly. Think longevity and add interest with subtle colour combinations that can be enhanced with wall decals, framed prints or canvases.
- Ask your child to help. If you give them time to talk, it is always surprising what ideas they have and how strong their opinions can be – even in the world of interiors.
- If your children are young, observe what attracts them. What colours do they choose when drawing, for their clothing? Is there a colour or print theme? All these provide clues as to where to start and are ideal ways of achieving 'buy in' from your young individual.





# win one of these great bedroom packages from Gorgi and Resene

- The first point of focus in a bedroom is the bed and its coverings. Choose items that will grow, both in taste and size, with your child.
- Choose products that combine classic with contemporary, as this will also work as your child becomes a teenager. Forward planning will ensure cost and time savings.
- When choosing bed coverings, offer your child a choice of three or four cover options in various colours and or prints. The coverings will then give you a place to start in regards to your choice of Resene paint colour. Painted walls give parents the ability to change colours easily. Keep wallpapers simple – textured anaglypta-style or subtle two-colour print wallpapers offer versatility as your child develops.

For more bedroom decorating ideas check out the kids section on the Resene website – [www.resene.com/kidzcolour.htm](http://www.resene.com/kidzcolour.htm). **H**

**Opposite page** The perfect boy's bedroom: Madder Red King Single Duvet Cover in Scarlet Ticking Stripe, \$204; Scarlet Gros Grain King Single Flat Sheet, \$103; Madder Red Scarlet Ticking Cuff Pillowcase, \$34; Elephant Oxford Pillowcase \$36; Old World Oxford Pillowcase, \$36; Old World Pinstripe King Single Quilt, \$258 and Bundle Merino Scarlet Bed Blanket, \$180, all from Gorgi. Resene Clouded Blue from the Karen Walker range and Norwall Black and White wallpaper from Vision. Chair in Resene Red Berry. Trims in Resene Wan White from the Karen Walker range.

**Above** For the girls: Paper Doll Lilac Stripe Duvet Cover Single \$196; Raspberry and Turquoise Gros Grain Flat Sheet \$100; Raspberry and Turquoise Gros Grain Pillowcase \$34; Lilac Drill Pillowcase \$34; Sage Green Polkadot Oxford Pillowcase \$38 and Sage Green King Single Quilt \$258, all from Gorgi. Walls in Resene Moby and Borders and Stripes wallpaper from Ashley. Trims in Resene Wan White from the Karen Walker range.

**First prize:** A Gorgi Kidsroom bedroom package up to the value of \$1100, including: one duvet cover, one sheet set, one printed cushion, one printed lamp, up to \$300 worth of Gorgi fabric for blinds or drapes, and one Merino Bundle Blanket or one Bed Quilt. Resene paint to the value of \$250.

**Second prize:** A Gorgi Kidsroom package up to the value of \$500, including one duvet cover, one pillowcase and one Merino Bundle Blanket or one Bed Quilt. Resene paint to the value of \$250.

**Third prize:** One Gorgi Kidsroom Merino Bundle Blanket or Bed Quilt up to the value of \$200. Resene paint to the value of \$250.

All you have to do is get your creative juices flowing and describe what you would do to make your child's room look a whole lot better. Simply write and tell us what's wrong with his or her bedroom and how you would like to change it. Include:

- Your chosen Resene paint colours. Visit your local Resene ColorShop or go online [www.resene.com/swatches/index.php](http://www.resene.com/swatches/index.php), or choose from the specially created Resene KidzColour range; see [www.resene.com/kidzcolour.htm](http://www.resene.com/kidzcolour.htm).
- Your chosen Gorgi products including bedding items and soft furnishing accessories such as lamps, cushions and blinds for your room setting. You can do this by visiting Gorgi's full online store [www.gorgi.co.nz](http://www.gorgi.co.nz).

Make use of Gorgi's free swatch sample service and specify products using Gorgi's Made to Order service for custom-made accessories in Gorgi Fabrics (lamps, blinds etc) to enhance the look you are after.

We will then choose the three best schemes, follow the winner's renovation progress and feature them in an up-coming issue. The scheme can take any form you like. Some ideas of things to include are photographs of your child's current bedroom, a written description (and or drawing) of desired changes and/or theme, include Resene paints, Gorgi fabrics, and product brochures. Don't forget to include your full contact details.

Please send your room brief to Habitat Gorgi Bedroom Makeover, PO Box 78070, Grey Lynn, Auckland 1021.

Entries close November 30, 2009.

**Terms and conditions:** This competition is open to New Zealand residents except staff members of Resene, Gorgi and Tangible Media. Winners agree to renovate their children's bedroom using the products they have won and to have the rooms featured in an up-coming issue of *Habitat* magazine. Gorgi's decision will be final and no correspondence will be entered into. The prizes are not transferable and cannot be exchanged for cash.



# summer under cover

## Is it time to spring-clean your insurance policies?

The flowers are in bloom, the grass needs to be cut and it's time to shake those winter blues. As the weather starts to improve many people take the opportunity to spring-clean their homes. While spring-cleaning is associated with cleaning windows, gutters and even the overcrowded linen cupboard, it is rarely associated with contents insurance.

In many instances once you have taken out your contents insurance you tend to forget about it until the bill arrives or you are in the unfortunate position of having to make a claim. However, it is important to review your contents insurance requirements regularly to ensure you have the right level of cover. To help you spring-clean your contents insurance, we have pulled together a list of important factors to consider.

### The right level of cover

It is important you insure your contents for the correct amount so you are not left out of pocket at claim time. Spring-clean your contents insurance with these simple steps:

- Use a valuation checklist, to calculate how much your contents are worth. Many people just estimate the value of their contents

when they take out their insurance policy. Walk through your home and work out how much it would cost to replace each item in each room. You need to consider both big items, such as the TV, and the smaller items such as your linen.

- Update your insurance to include any new purchases. You would be surprised at how many new possessions you acquire each year. Everything you buy adds to the value of your contents, whether it's a new lounge suite, a flat screen television or a winter coat. We recommend you review your contents valuation once a year to be sure your insurance keeps up with your lifestyle.

Did you know that the contents of an average home are worth more than \$70,000?

- Think about gifts you have received from other people. Christmas is a key time for giving and receiving gifts. While each item may not always have a particularly high individual value, the combined value of the presents your whole family receives can be quite significant.

### The type of cover

Having the wrong type of cover can be just as disappointing as being underinsured. Make sure you understand what type of cover your policy provides.

**Full replacement value:** If items covered for replacement value are damaged, many insurers will repair the item to an 'as new' condition. If they are stolen, or damaged beyond repair, your insurance company will decide whether to replace it with a brand new item or a cash settlement. Check this with your insurance company.

**Market value:** This is the value of an item taking into account any wear and tear (depreciation). It is usually based on the age of the item at the time it was lost or stolen.




### And the rest...

Think about any items that may need to be specified on your policy. If you have expensive items such as cameras, video cameras, or works of art they are usually covered on your contents policy up to a certain amount. We recommend having these items listed as a 'specified item' on your policy.

Talk to your insurer about ways to save money. You could be paying too much for your insurance. Most insurance companies offer different ways to reduce your premiums.

- Put all your insurance with one company. Many insurance companies offer customers a discount when they hold more than one policy type, for example, car and contents insurance. For example AMI offers its customers a Multisaver 2 or Multisaver 3 discount when they have more than one policy type.
- Pay a higher excess. Most insurance companies let you pay a higher excess in exchange for a lower premium. This does not affect the level of cover you receive, however, you will pay a higher excess on every claim.
- Install alarms. You could receive a premium discount if you have a professionally installed, hard-wired burglar alarm.

While we may not enjoy spring-cleaning, it is actually a very important task. Caring for your possessions will help avoid wear and tear which is not covered by your insurance policy. **H**

-  Resene Lucky Break
-  Resene Moonbeam

### top tips

Having colour photographs, valuations or original receipts as proof of ownership can make settling a claim easier.

Check your policy documents to understand what level of cover your policy provides. Your level of cover may differ for different items and your level of cover may change from replacement value to market value as an item gets older.

## exclusive offer for Habitat readers



When you take out a new insurance policy with AMI Insurance you will receive a free 12-month subscription to Dish magazine.

Call 0800 100 200 today and mention this offer. With the spring-cleaning finished you can sit back, relax and read the latest copy of Dish magazine.

For more information about AMI policies, or to get a competitive quote, call AMI today on 0800 100 200 or visit [www.ami.co.nz](http://www.ami.co.nz). You'll put the phone down smiling.

**Terms and conditions:** 1. AMI Insurance Limited (AMI) offers a 12 month subscription to Dish Magazine (one subscription only per customer) for each new House or Contents policy purchased during this promotion where the customer purchasing the policy mentions this offer to the AMI representative attending at the time of purchase of the policy (new policies purchased without reference to this offer do not qualify for the Dish magazine subscription). 2. This offer does not apply to the renewal of an existing AMI policy. 3. This offer may not be used in conjunction with any other AMI offer or promotion. 4. Standard AMI policy criteria, terms and conditions apply and subscription details will be posted to customers after confirmation of insurance cover (Please allow up to 15 working days after confirmation of insurance cover for delivery). 5. Offer ends 31 March 2010. 6. AMI staff and agents and their immediate families do not qualify for this offer. 7. AMI reserves the right to terminate this offer promotion without notice at any time. 8. AMI's decision will be final and no correspondence will be entered into. 9. The Dish magazine subscription is not transferable and cannot be exchanged for cash. 10. Details of each customer who accepts this offer will be passed on to Jones Publishing for subscription purposes only. 11. The subscription offered is a bi-monthly subscription to Dish magazine i.e. 6 issues per year. 12. The start date for the subscription is at AMI's discretion and confirmation of the subscription start date will be sent to each customer in writing.





One of the marae makeovers that features on the show. The building walls are in Resene China Ivory while the roof to the left is Resene Pioneer Red.



# down at the marae

An award-winning makeover programme using Resene paints is now in its sixth series.

It's 5am and the local Maori community has gathered at the marae. After six years of selling hangi and rewana bread, they've finally pulled together enough money to give their much loved whareniui a face-lift with a new kitchen and the grounds a welcomed landscape.

Ever wondered what happens on any one of the hundreds of marae up and down the country? Here's your chance to be a fly on the wall.

Add to the mix of culture and quintessential Maori humour, a massive landscaping and building project with limited time and resources, and you have an award-winning television programme – *Marae DIY*.

The top-rating show, supported by companies including Resene, has been drawing Maori and Pakeha audiences to Maori TV for the past five years and in March 2009 hit the road once again to makeover six marae from Picton in the south to Pawarenga in the north.

"It's a big commitment," says David Clayton-Greene, who's been landscaping on the programme since the first series. He says the challenges that *Marae DIY* presents are at times terrifying, but ultimately incredibly rewarding. "We have just four days to pull the marae apart and then painstakingly rebuild, repaint and landscape each marae complex."

David's partner in crime is Monty Ritai, who takes care of the building side of things. The two often have to think outside the square because of the remoteness of many of the locations. Lack of budget and resources often mean they have to use some innovative approaches.

"We beg, borrow and steal whatever the local community will give us and use a lot of natural resources from the land," says David. "It's always done with a lot of creativity, enthusiasm and laughter."

And while that's going on, a group of the kuia (female elders) are whisked away to get a well-deserved makeover.

The bilingual series incorporates tribal and marae history as well as traditional practices such as kai-gathering, weaving, whakairo and ta moko. The show's two main presenters, Te Ori Paki and newcomer, Aroha Hathaway (from *Good Morning*) help weave the stories of the marae and its people seamlessly through the DIY genre.

In 2007 *Marae DIY* won best reality television format at the Qantas Media Awards over *Police Ten 7* and *NZ Idol*.

"This show is only possible due to the tremendous and generous help that it receives from businesses and the community's donation and discounting of products and services," says David.

This year Resene donated paint for each of the six marae and assisted with discounts on accessories and other materials. David says Resene's colour range, particularly the Resene Heritage colour collection, works really well with the diverse landscape settings of the marae. **H**

*DIY Marae* runs on Sunday nights throughout October and early November. For a list of Resene products and colours used on the programme, visit [www.resene.co.nz/homeown/use\\_colour\\_coloursfrom\\_tv\\_shows.htm](http://www.resene.co.nz/homeown/use_colour_coloursfrom_tv_shows.htm).

**We'll cover the lipstick, that was in your bag, that was in your car, that was in your garage when the tornado hit. With Advanced Contents Cover, you'll be covered down to the smallest items. We know that replacing the contents of your handbag is as important as the contents of your house.**



**Keep on smiling**  
0800 100 200



words Vicki Holder pictures Rossi Gannon

## deco-rated hero

As a champion of Napier's Art Deco heritage, Robert McGregor has been instrumental in saving buildings and promoting eye-catching colour schemes.

A dazzling glamour event held every year in summer, Napier's Art Deco Weekend is a highlight of the tourism calendar. Since the 1990s, the festive weekend has attracted thousands of people from throughout the nation and the world.

At all times of the year, visitors can walk the streets or take the daily organised tour of the district's 140 architectural treasures built in the 1930s, painted in often vibrant colour combinations.

Robert McGregor, heritage officer for the Art Deco Trust, explains that it's largely the strong colour schemes which have made the Art Deco buildings so popular today. Colour helps focus attention on the magnificent detail that captures the essence of the era.

"The paint colour brings up the detail so it can be read. By using

colour, you draw the eye to the way the architect modelled the building and people suddenly see it in a different light."

Resene is used not only because it is great paint, but because Robert likes the way the colours are presented graded in shades. "It makes it easy to choose paint schemes because Art Deco colours are successively layered from pale to dark."

For many years the buildings were largely ignored. As the director of the Hawkes Bay Museum, Robert McGregor was instrumental in helping to convince Napier it had something truly unique, capable of becoming a major tourist drawcard.

He explains how it began. "In 1981, a group of planners and architects from the OECD came through Napier and were shown



“By using colour, you draw the eye to the way the architect modelled the building and people suddenly see it in a different light.”

the four heritage buildings that had survived the 1931 earthquake. That’s how we viewed Napier at that time – a city whose heritage had almost all been destroyed... As they looked down from the hill, they pointed to the Art Deco buildings of the 1930s and said, ‘those are the real treasures, and there are so many of them.’ It had been staring us in the face all that time. But suddenly it hit home.”

Napier is also unusual for its Art Deco town centre. In other parts of the world, there was almost no building activity in the early 1930s because of the Depression.

The Art Deco Group was formed, but changing people’s perceptions of Art Deco was difficult. In the late 1980s when several important buildings came under threat, Robert and his colleagues worked tirelessly to ensure they weren’t lost.

In 1987, the group became the Art Deco Trust with Robert as its first president. A year later he received a travel grant to visit museums and historic sites in the US. After this, the first Art Deco weekend was staged and was a roaring success.

“The renewed enthusiasm for the city saw people start to repaint their old buildings, which had become shabby with age, in appropriate colours.” In 1992, the council gave the trust funding to establish premises with a paid-up manager. Robert became the executive director, and a full-time administrator was taken on. The council also introduced the Art Deco Improvement Grant Scheme, subsidising the painting of buildings with trust-approved colour schemes.

Explains Robert: “The buildings were colourful when they were built. But not like they are now because the colours were created with oxides in the cement and the buildings didn’t need to be painted... By today’s standards, the colours were quite sombre.”

But by national standards, they were quite different, in cream, ochre, buff, pink, lime green, chrome green and blue, and often with two or three colours on one building to accentuate decorative details.

As the building surfaces became grubby with age in the 1960s and 70s, they were painted, often in unsympathetic colours. The trust’s policy was to encourage a polychromatic scheme to allow shadow effects which emphasise the bas relief detail. “If people come to the >



**Far left** Robert McGregor, a longtime champion of Napier’s Art Deco heritage.

**Left** The Lockyer’s Building, using Resene Peach, Resene Frangipani, Resene Chardonnay, Resene Koromiko, Resene Westside, Resene Biloba Flower, Resene Fuschia, Resene Windsor and Resene Crusoe.

**Top** The Hurst Building, using Resene Xanadu, Resene Mantle, Resene Rainee, Resene Finlandia, Resene Palm Leaf, Resene Geebung, Resene Cream Can and Resene Black.

**Above** The Masonic Hotel, using Resene Xanadu, Resene Shady Lady, Resene Mercury, Resene Flame Pea and Resene Palm Leaf.

-  Resene Cream Can
-  Resene Rainee
-  Resene Sargent Pepper

# NEW Resene colour matching tool

for this free tool go to

[www.peterfell.co.nz/resene](http://www.peterfell.co.nz/resene)



Left Detail from McDonald's Restaurant, formerly the Taradale Hotel, using Resene Cumulus, Resene Golden Glow, Resene Apricot, Resene Sunset and Resene Koromiko.

trust with drab colour schemes, we simply say, 'sorry, we don't approve'."

Robert recently retired from what had become a demanding role. The job has since been split in two, so Robert is back working part-time as the trust's heritage officer.

He speaks of his passion for Art Deco. "It was a fascinating period of huge change... Everything was being thrown out and replaced. Art Deco encapsulates the exploring and embracing of the new. Its symbols are of speed, power and the new woman. It must have been incredibly exciting. We could see the potential Napier had to be a world famous city. And it's been nothing but fun!"

Whereas other new world cities revel in earnest but boring heritage celebrations, "Napier's festival is all about cocktails, laughter, beautiful cars and glamour – that's what brings the city's buildings to life." H

## What exactly is Art Deco?

Art Deco originated in Europe and its heyday was from 1920 to 1940. It became widely known following the great Exposition des Arts Modernes Decoratifs et Industriels, held in Paris in 1925 and from which its name was ultimately derived. Art Deco expressed all the vigour and optimism of the roaring 1920s, and the idealism and escapism of the grim 1930s. Its decorative themes are:

- Sunbursts and fountains – representing the dawn of a new modern age.
- The skyscraper shape – symbolic of the 20th century.
- Symbols of speed, power and flight – the exciting new developments in transport and communications.
- Geometric shapes – representing the machine and technology which, it was thought, would solve all our problems.
- The new woman – reveling in her recently won social freedoms.
- Breaking the rules – cacophonous jazz, short skirts and hair, shocking dances.
- Ancient cultures – oddly enough, there was a fascination with the civilisations of Egypt and central America.

For more information, visit [www.artdeconapier.com](http://www.artdeconapier.com).





# Pooley Eco-house

## THREE KINGS

The 'How to have your cake and eat it' eco-house

**"In the morning you can see the light patterns through the VELUX Skylights on the walls – it spices the house up"**

BRYAN POOLEY —  
ECO-HOME ARCHITECT.

While 'passive solar' describes this house, its designer is the polar opposite. Magnetic, proactive, inspiring, Bryan Pooley is not your ordinary eco-home architect.

It was on one of his annual cycling tours through Vietnam that Bryan drew inspiration. 'I saw how local families lived together under the one roof, and brought this idea home with me.'

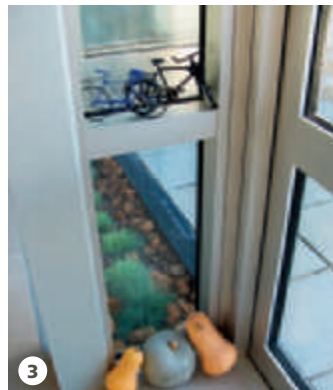
The initial concept for the eco-house was public and private pavilions, connected by a walkway. The local Council took a particular interest in the design, assuming that Pooley was trying to squeeze two dwellings onto the one site. He wasn't.

### Blending eco philosophy and practicality

He blended his building background with his eco philosophy. 'I wanted to build something energy efficient and suitable for a modern lifestyle, so you can have your cake and eat it,' he smiles.

To achieve energy efficiency he created inter-seasonal storage with a heat sink in the home's living space by building an insulated swimming pool and filling it with rock excavated from the site. 'The idea sprang from a place I visited in Northern England where outside the water was frozen, but inside the temperature was 18.7 degrees,' he explains. That's without any other form of generated heat. The theory is to allow the heat sink to absorb sunlight through the windows during the day and gradually release the heat in the evenings. It will take two to three years to dry out before it is fully effective.

Steel, timber and aluminium are combined in this dynamic, self reliant home. The flooring is bamboo and ceramic tile.



- 1 Public and private pavilions linked by walkway
- 2 VELUX deliver the south light into the kitchen
- 3 'Instant enlightenment – unexpected surprises'

### Vital ingredients of light and air

To manage heat and air, cross and stack ventilation is a vital ingredient. Low opening windows draw air through to the high opening VELUX Skylights. 'The VELUX Skylights also deliver the south light into the kitchen area,' points out Pooley. 'In the morning you can see the light patterns through the VELUX Skylights on the walls – it spices the house up.'

He's determined to be energy independent, and when the photovoltaic monocrystalline panel is installed on the roof, it will produce all the electricity as needs through the year; approx 4000kWh/y. 'This means we will be a zero energy house – only creating as much power as we require.'

Pooley believes that design is about place – our environment, which way the wind blows, where the sun sets and the moon rises. 'A house should surprise you. Plan the design so you can see the full moon one night a year framed in the ceiling of the house. Maybe that's where you put your VELUX Skylight in.'

Delicious.

*Bringing light to life*



FOR MORE VIEWS ON ENERGY EFFICIENT VELUX SKYLIGHTS CALL 0800 402 080 OR CLICK ON [www.velux.co.nz](http://www.velux.co.nz)



words Sharon Newey  
pictures Frances Oliver

## black magic

Black walls? In a kitchen? Check out the striking result.

What started as one black feature wall in this striking kitchen, soon became two walls, then three walls, then the whole lot.

Homeowners David and Louise Cowie had always envisioned a sleek white kitchen with touches of black and red, but once they saw the effect of the white cabinets (Resene Alabaster) against the black (Resene Nero), they were sold on the combination as a whole-room concept. Says Louise: "It just looks so crisp and sharp. I've always had a love affair with black but I never thought I would ever have a black kitchen."

The couple was worried that the walls, combined with a black granite benchtop, would make the room too dark but it has made no difference to the light levels. Certainly having plentiful windows along the western wall as well as French doors onto a deck helps.

The kitchen sits in a space that used to be a mish-mash of rooms including a small laundry, part of the bathroom and a back porch. The old kitchen was much smaller and sported nasty brown mosaic tiles

and a brown stove. A far cry from this spacious and dapper room.

The splashback above the sink bench is also black, made out of Laminex's Vizage Vertical Surfaces in Black Ripple, a perfect alternative to tiles. The floor is also black, in Perilli lookalike self-patterned vinyl. "That's the one thing I wouldn't do again," says Louise, however. "A pure black floor shows every crumb and scuff mark."

The room isn't all black and white. Red glass accessories sparkle from the windowsills and benchtops. "I had always wanted a minimalist kitchen," says Louise, a self-confessed hoarder and collector, "but I just keep popping more bits into it. This is actually pretty minimalist for me."

When it came to the kitchen design, she needed plenty of cupboard space for all of the items collected during the years – including up to six dinner sets and "enough glassware for a party of 100".

David drew on previous experience with CAD to design the kitchen, carefully navigating the tricky L-shaped space. >



**Top left** The kitchen sits in a space that was a mish-mash of rooms including a laundry, part of the bathroom and a back porch.

**Above** The laundry is now neatly stowed behind a roller door.

**Above right** A small breakfast bar is the perfect place for friends to perch.

**Right** Overhead cupboards sit over generous windows to form a sleek handle-less bulkhead.

■ Resene Alabaster

□ Resene Nero

**Did you know?** Resene SpaceCote Low Sheen Kitchen & Bathroom combines anti-bacterial silver protection and MouldDefender mould inhibitor, perfect for minimising unwanted nasties in kitchens, bathrooms and laundries.



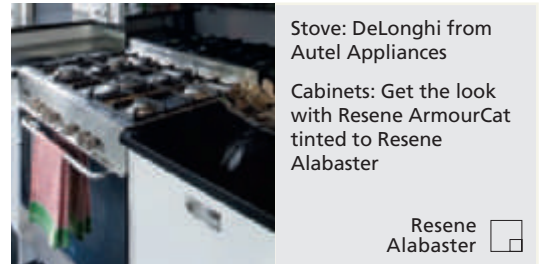


**Above** The impressive stove was bought as a result of the owner's 'domestic goddess' fantasies.

Louise opted for banks of under-bench drawers both for practicality and good looks. Overhead cupboards provide even more storage and have no handles for a cleaner look. Other cupboards have recessed handles, again for a neater finish. Yet more storage is provided by a pantry beside the laundry cupboard, hidden behind a full-height roller door.


A 900mm-wide cooker with a gas hob sits beside a small breakfast bar. "I insisted on the big stove," says Louise. "I have visions of myself as becoming a domestic goddess so I required all this stuff."

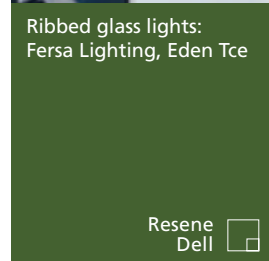
While an unusually shaped space, the kitchen is certainly large. "We can both be working in here, preparing a Christmas dinner, and not get in each other's way. People can lean up against the breakfast bar and chat. It's great. I've only ever had kitchens with one arm's length of bench space, so this is luxury." **H**



Stove: DeLonghi from Autel Appliances

Cabinets: Get the look with Resene ArmourCat tinted to Resene Alabaster

Resene Alabaster 



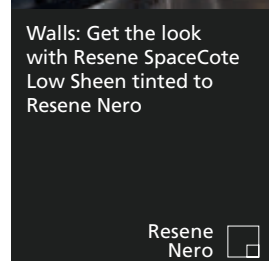
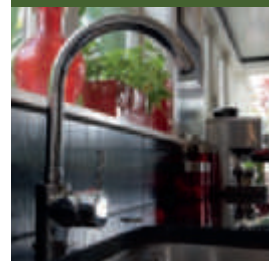
Ribbed glass lights: Fersa Lighting, Eden Tce

Resene Dell 




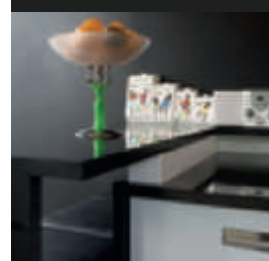
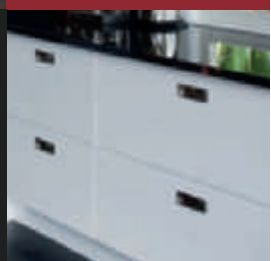
Splashback: Vizage Vertical Surfaces in Black Ripple from Laminex

Resene Red Hot 



Walls: Get the look with Resene SpaceCote Low Sheen tinted to Resene Nero

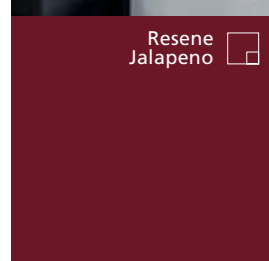
Resene Nero 



Clock: Origin Interiors  
Roller door: Home Plus, Mt Roskill

Cabinetry and bench: Fabulous Kitchens

Resene Archive Grey 



Resene Jalapeno 

# a kitchen designer

For its size, the kitchen is one of the most complex spaces in the house to design. A good designer is worth more than a fancy fridge any day.

words Vicki Holder

Mal Corboy's striking design has some cabinets in Resene Black White while others are glass, back-painted with Resene Double Caffeine.



- Resene Black White
- Resene Del Toro
- Resene Double Caffeine
- Resene Quarter Pravda

**Left** This design by Adaleen Griffiths of Fineline Kitchens features Resene Quarter Pravda on the cabinets.

Unless you're one of the lucky few who can afford to eat out every night, your kitchen will be the busiest area of your home. Nowadays, it often features prominently as a part of the open-plan living area, so not only must it be a hardworking, practical, robust space that works well, but it also has to look great.

A beautiful and well-planned kitchen will also add to the value of your home when you come to sell.

Given the kitchen's important role in a home, when you are building or renovating, it's worth investing in the services of a kitchen designer to make sure you get it right. But how do you go about hiring a good one? And once you've made your selection, what does the process involve?

Some companies which make and supply kitchen cabinetry will offer a 'free' design service when you order a kitchen. But be aware that not all of the so-called designers are qualified or experienced. They may simply be sales consultants with some design flair or good knowledge of kitchen layout.

While professional kitchen designers may use preferred cabinet makers and other suppliers, they will act independently, and design a kitchen according to your brief, not according to the limitations of the materials available.

Kitchen designers Mal Corboy of Mal Corboy Design and Adaleen Griffiths of Fineline Kitchens share advice.

### The choosing

Do your research by looking through home design magazines and collect a scrapbook of kitchens and ideas that appeal. Conversely, also take note of things you don't like. Go to home shows or the Home Ideas Centre. Take note of the designers whose work you like.

Ask friends who have recently built new kitchens for referrals.

Look for experienced, certified kitchen designers with National Kitchen & Bathroom Association (NKBA) qualifications. This is a four-year course that covers all aspects of kitchen design. The qualification is kept current with ongoing training for a practising certificate. It ensures designers are knowledgeable about the products and up to date with design trends. If you work

with an NKBA member, when disputes arise, a mediation service is provided to try to resolve issues.

Make sure the designer has been in the industry for a while, continuously, and they haven't just returned after doing something else. They must have current knowledge of the latest building codes, products and suppliers.

Look at examples of the designer's work on their website, in a portfolio and magazines to see if it appeals. If they can only show you a couple of examples, ask why. Remember, you want an experienced designer.

Speak to the designers who interest you. It's important to have a conversation to gauge if you think you can work with them. Ask for references from former clients and make sure you phone them.

Hire someone you feel comfortable with and respect, as you'll be spending a lot of time together over the next few months. A kitchen may occupy a confined space but it contains so many elements and design details, that there are many opportunities for things to go wrong. Good communication is

## top tip

Study the plans carefully before they are finalised. Make sure you are happy with every last detail – both function and form. You pay a lot for plans, so you should expect decent ones that provide all the information you need. Expect both a plan view (looking down from above) and elevations (straight on).

crucial, otherwise the design process can be extremely difficult.

Discuss the budget so you know what to expect. Be prepared to pay well for good design. There's no such thing as a quality, cheap kitchen. A \$10,000 and a \$40,000 kitchen may look the same when first created, but several years later, the quality kitchen will still look good. You need to create a kitchen of a quality that matches the rest of your home.

Discuss the timeframe to ensure they can complete the project within a given time.

**“Work as a partnership. To get the very best kitchen for you, stay involved every step of the way.”**

### And the using

Talk to the designer about your lifestyle, your wants and needs. Show them the rest of your home so they are familiar with your personal style and preferences.

Don't feel intimidated by the designer. Express your opinions but be prepared to listen as they have a lot of knowledge.

Establish the ground rules right from the start. Check charges and stages of progress and what the designer expects of you to avoid any misunderstandings. Test their listening skills. Don't just assume they've heard everything you have asked for. Check they understand.

Be prepared to change your mind and tastes. You're bound to learn about things during the process that you don't already know.

Be trusting. Some ideas may sound off the wall, but if you're convinced you've selected a good designer who knows what they're talking about, then you can be pretty sure they'll get it right.

Study the plans carefully before they are finalised. Make sure you are happy with every last detail – both function and form. You pay a lot for plans, so you should expect decent ones that provide all the information you need. Expect both a plan view (looking down from above) and elevations (straight on).

Don't show the design to all your friends and family. Everyone has an opinion and if you're swayed by those, the design will end up being compromised. Remember, it's your kitchen, not anybody else's.

Check that the designer has regularly used the kitchen manufacturer. Ask to go to the workshop to see that it's tidy and well-organised. Mistakes are often made in messy environments.

Work as a partnership. To get the very best kitchen for you, stay involved every step of the way. This means visiting product and appliance showrooms with the designer and helping to make choices rather than leaving it all up to someone else.

Meet regularly to review progress and discuss any issues so there are no unexpected surprises along the way.

Remember, you are the boss and the designer is working for you, not the other way around. Don't abdicate responsibility. **H**

# Innovation Quality Health



4X4aMK Sink Mixer

[www.foreno.co.nz](http://www.foreno.co.nz)

*“world class  
leaders in  
design with a  
reflection on  
New Zealand  
trends”*

- Nat Davis, Designer



**Foreno**

*Watermark Certified Tapmakers*

**Foreno Tapware NZ Ltd**

FREE PHONE: 0508 FORENO

Available from Hardware Stores, Plumbing Merchants & Building Merchants Nationally.

# being part of the solution

The news about climate change can no longer be ignored and the impact of our appliance choices can make a difference.

One company committed to making the change is Electrolux. Long before the inconvenient truth of Kyoto, Electrolux recognised the importance of product stewardship and sustainability and has international awards reflecting their long-standing commitment to products and processes that reduce energy consumption.

Recently Electrolux brought its most energy and water efficient appliances together on their website to form the Eco Range – appliances that provide elegant, thoughtful design solutions and create a stylish home environment too. You'll not only find New Zealand's most energy efficient refrigeration range, water efficient front load washers and some of the most quiet dishwashers

available, you'll also find tips to help you operate your current appliances more efficiently.

Whether your kitchen appliances are brand new or nearing the end of their life, how you use them makes a big difference.

- Cover the pot or pan when cooking food to save energy and cooking time. Cooking without a lid wastes up to 30% of the heat.
- Defrost food in the fridge rather than in the microwave oven.
- Know your dishwasher programs. Some dishwasher models have a 'Quick 30' program designed to quickly and efficiently clean your freshly used dishes.





The Electrolux Energy Star dryer has an impressive 5.5 star energy rating. You can feel assured you are using minimal energy to effectively dry your clothes.



The Electrolux EWN14991W 8kg front load washer has a 4.5 star water rating, 4 star energy rating and even has an inclined drum to make loading and unloading easier.




>

For best in class energy efficiency you can't look past the latest Electrolux refrigeration collection. Using advanced technologies and a more environmentally friendly refrigerant with lower global warming potential, these fridges are available in single door, two door and side-by-side formats.

Resene Limerick 



All Electrolux ovens have European 'A' class energy efficiency and the pyrolytic model shown above also offers chemical-free oven cleaning to protect you and the environment from harsh chemicals.


Resene Moxie 



Using only 10.2 litres of water per rated cycle, this Electrolux dishwasher saves you time and water. Its super quiet operation at 44db makes for a peaceful solution.



Electrolux induction cooktops have speed, safety and energy efficiency advantages over other cooktops.

Resene Jalapeno 



- Cook in bulk. Cook double or triple quantities and freeze the extras to save time and energy.
- Avoid opening the fridge unnecessarily. Not only does the influx of warm air have to be cooled, it also increases the humidity inside the appliance, resulting in the accumulation of ice.
- Retire your drinks fridge. New fridges can be up to 30% more efficient than a 10-year-old model.
- Water-efficient top-load washers save energy. If you prefer to use a warm wash cycle, then a water efficient top-loader washer will save you electricity as well.

- Manage your time. Washing machines are designed to wash truly dirty clothes, when often our clothes or bed linen only need a light wash or a refresh. Electrolux Time Manager washers allow the wash cycle to be shortened for lightly soiled laundry.
- Remember to clean your dryer filter. Not only is it necessary for safety but a clogged filter dramatically reduces the energy efficiency of the appliance by slowing the airflow.

See [www.electrolux.co.nz](http://www.electrolux.co.nz).



## outside in

Bringing outside elements inside makes this bach bathroom an unconventional and interesting place to be.

If you're keen to include something a little quirky or unexpected into your new home or renovation, the bathroom is a great place to do it. You can be experimental and creative with colours, materials and textures without the fear of making a major mistake.

And the bathroom in a bach is an even better place to let go of traditional constraints. That was the view of Marg and Dave Kennedy when building their three-bedroom holiday home in the Martinborough wine district. The couple worked closely with designer Darren Hunter from Hunter Design Studio and Dave's company, KBL Builders, carried out the construction.

Together they decided on a relaxed, simple feel that incorporated a range of textures and the unconventional use of certain materials. For example, mini Zinalume lines the bedroom ceilings, and the living room features black Onduline with varnished customwood throughout for visual interest and durability.

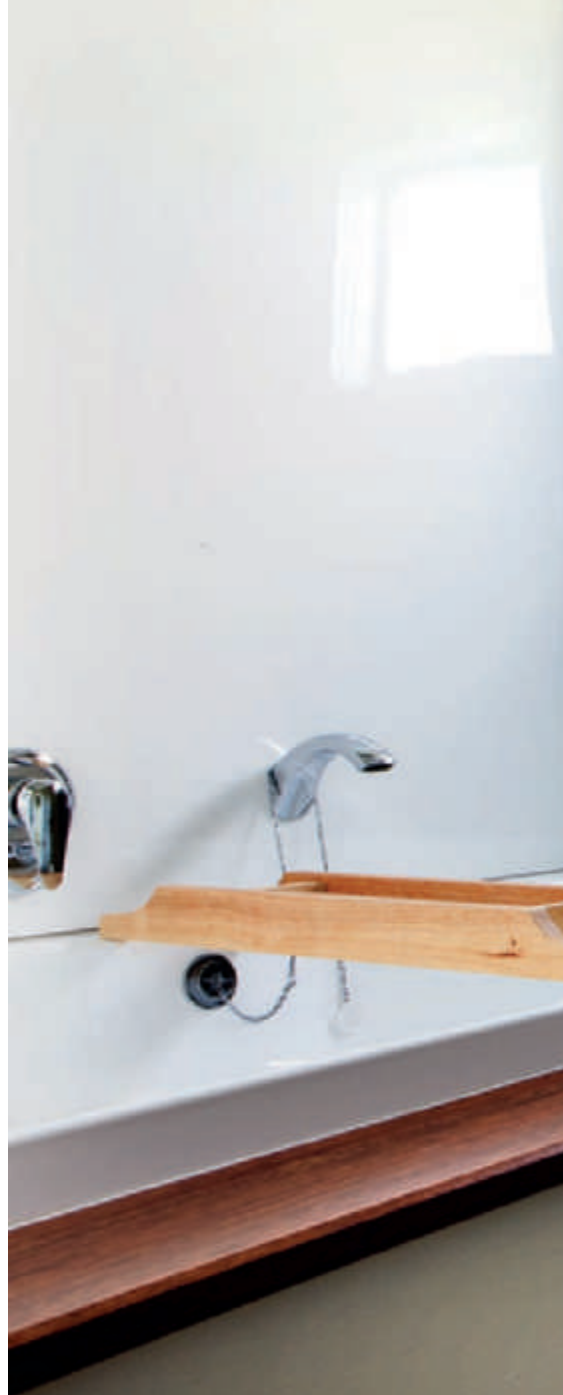
"We designed this house with entertaining and holidaying in mind," says Marg. "We wanted it to be relaxed and to be able to take the knocks."

The bathroom has the same casual atmosphere, with a surprising mix of the rustic and the modern. And there's a twist – users have the subtle impression of being in an outside room.

The interior walls are finished in Linea weatherboard, a durable fibre cement cladding more commonly used on a home's exterior. The result is a traditional bach feel that adds interest to the design. To enhance the outdoor feeling, simple exterior downlights illuminate the space. Dave added a personal touch of his own with a mirror surround, painted Resene White, that resembles an external window frame and complements the horizontal window at the foot of the bath.

Beneath the mirror is another custom piece designed and made by Dave – a vanity unit made of a plywood carcass with a warm-coloured kwila top, on which sits a modern Kohler hand basin and a clean-lined chrome tap.

Adding to the carefree mix of materials and styles is a more ornate wrought iron shelving unit and matching towel hook. "We didn't really want a particular style for this bathroom. We liked the wrought iron and it gives the room a bit of personality. By contrast, we wanted the taps and light fittings to be simple and almost fade into the background," explains Marg. >





words Deirdre Coleman  
pictures Nicola Edmonds

- Resene Avalanche
- Resene Stonewall



**Above** A bath big enough for two was a strict requirement.

**Far left** To accentuate the outdoor feel, the mirror frame, painted Resene White, resembles an exterior window.

**Left** The plywood vanity was custom-made by the owner, and sports a Kohler basin.



**Above** These wrought iron towel hooks and the shelves add personality to the room.





Complementing the tones of the Resene Stonewall walls, the easy-care vinyl on the floor has a pebble pattern that adds another element of texture to the space.

The only must-have element in the bathroom, says Marg, was a bath big enough for two. Its durable timber surround ties in with the vanity unit.

“The top window was placed at such a height so that when you’re sitting in the bath looking through it, you can see the trees and the stars, which just adds to the whole feeling of being outside,” says Marg.

“Darren is such a talented designer and so much fun to work with. It was a great experience having the freedom to do something that wasn’t mainstream. That made it a really enjoyable project.” **H**

**Did you know?** Resene SpaceCote Low Sheen Kitchen & Bathroom combines anti-bacterial silver protection and MoulDefender mould inhibitor, perfect for minimising unwanted nasties in kitchens, bathrooms and laundries.

	<p>Walls: Linea weatherboard</p> <p>Resene Stonewall </p>
<p>Get the look with Resene SpaceCote Low Sheen (walls), tinted to Resene Stonewall, and Resene Lustacryl (trims and joinery) tinted to Resene White.</p> <p>Resene White </p>	
	<p>Vanity: plywood carcass with kwila top</p> <p>Hand basin: Kohler</p> <p>Toilet: Caroma</p> <p>Taps: Methven</p> <p>Resene Foundry </p>
<p>Lights: Lighting Plus</p> <p>Heated towel rail: Heirloom</p> <p>Wrought iron shelves: Acquisitions, Westfield Queensgate, Lower Hutt</p> <p>Resene Avalanche </p>	
	<p>Designer: Darren Hunter, Hunter Design Studio, Paraparaumu</p> <p>Builders: KBL Builders</p> <p>Resene Breathless </p>
<p>Resene Eighth Stonewall </p>	

# opposites attract

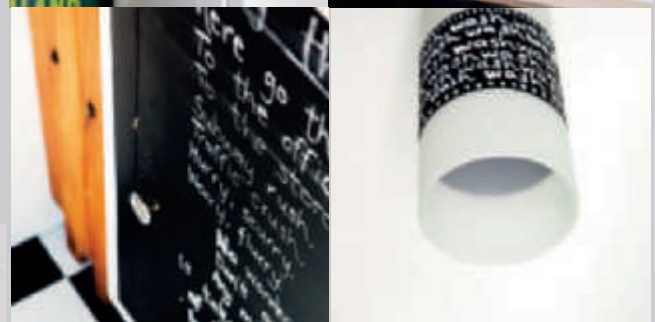
Our winning laundry sits at either end of the colour spectrum with black and white.

The winner of the Electrolux/Resene laundry competition, Alice Domett Doyle of Wellington, chose an eco-friendly solution and used black, white (Resene Alabaster) and metallic silver paint (Resene Atom).

The walls are adorned with stencils of clothes hanging on a line, and the front of the tub has Resene Blackboard Paint to keep the kids amused or to bear this week's poem. Flax kites hang from the walls for pegs and gardening items that need transporting, and the light has a fun shade. And, of course, pride of place goes to the new washing machine and dryer from Electrolux.

Carter Holt Harvey Products also chipped in with some free Bestwood Melamine in Mist Grey to complete the look.

-  Resene Alabaster
-  Resene Atom
-  Resene Black



top tip

Resene produces a paint specially for damp areas like laundries. Resene SpaceCote Low Sheen Kitchen & Bathroom combines anti-bacterial silver protection and MoulDefender mould inhibitor, perfect for minimising unwanted nasties in kitchens, bathrooms and laundries.



the paint the professionals use





## camping for birds

Make this quirky retro caravan-style birdhouse for your feathered friends.

### You will need:

Photocopied enlargement of the caravan template.

**Tools:** jigsaw; electric drill with 50mm hole-cutting drill bit; hammer; screwdriver; paint brushes (including artists' brushes for details); tin snips; metal file.

**Materials:** carbon paper; pencil; sandpaper; 25mm x 300mm dressed timber (we used off-cuts of shelving timber); 900mm x 600mm 'stucco' aluminium sheeting; 40mm stainless steel screw; small galvanised hinge with screws; zinc-plated latch hook; 15mm zinc-plated bullet head nails; exterior PVA glue; small off-cut of 10mm dowel.

**Paint:** Resene Multishield+ satin; Resene Quick Dry waterborne primer undercoat; Resene Waterborne Smooth Surface Sealer; testpots in Resene Alabaster, Resene Black, Resene Onepoto, Resene Pursuit, Resene Silver Chalice, Resene So Cool, Resene Turbo.

### > Step 1

Transfer the outline of the photocopied enlargement of the caravan template onto the dressed timber using a pencil and carbon paper. Repeat to make a second copy.

Carefully cut out both caravan templates with the jigsaw and cut a 100mm x 100mm square out of the back of one of them. Cut another square of timber to fit this hole (this will be a hinged access door on the back wall of the caravan). Cut a triangular 'towing bracket' from an off-cut of timber and smooth any rough sawn edges with sandpaper. Glue a small piece of dowel at one end to form the tow bar and allow to dry.

Apply one coat of Resene Quick Dry primer to the caravan cut-outs, 100mm x 100mm square, and 'towing bracket'.



top tip

Position the birdhouse where it's in semi-shade during the hottest part of the day and make sure it's away from any predatory felines. Also, avoid using tanned or any chemically treated timber.

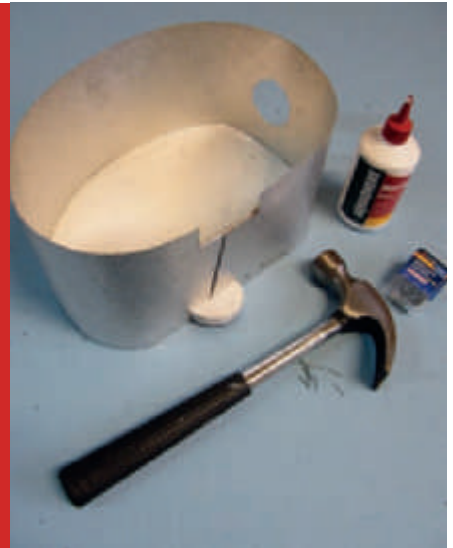


## ^ Step 2

Transfer the caravan enlargement onto the aluminium, with carbon paper and pencil, this time marking the circular windows and wheel. Cut out the circles with the hole-cutting drill bit and then cut around the outline with tin snips. File any rough edges and fix to the front caravan wall with PVA glue and bullet head nails, as shown.

## > Step 3

Cut a strip of aluminium measuring approx 150mm x 900mm. Determine the position of the front window (access hole for birds) and drill with hole-cutting drill bit. File any rough edges. Fix the aluminium strip into position around the front caravan wall using bullet head nails, gluing and curving as you go. Cut aluminium to fit around wheels, as shown. Prime both sides of the aluminium walls with one coat of Resene Waterborne Smooth Surface Sealer.

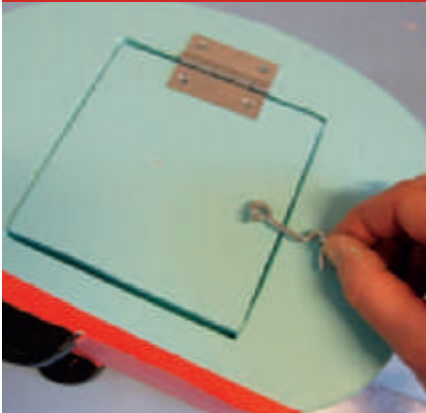



## < Step 4

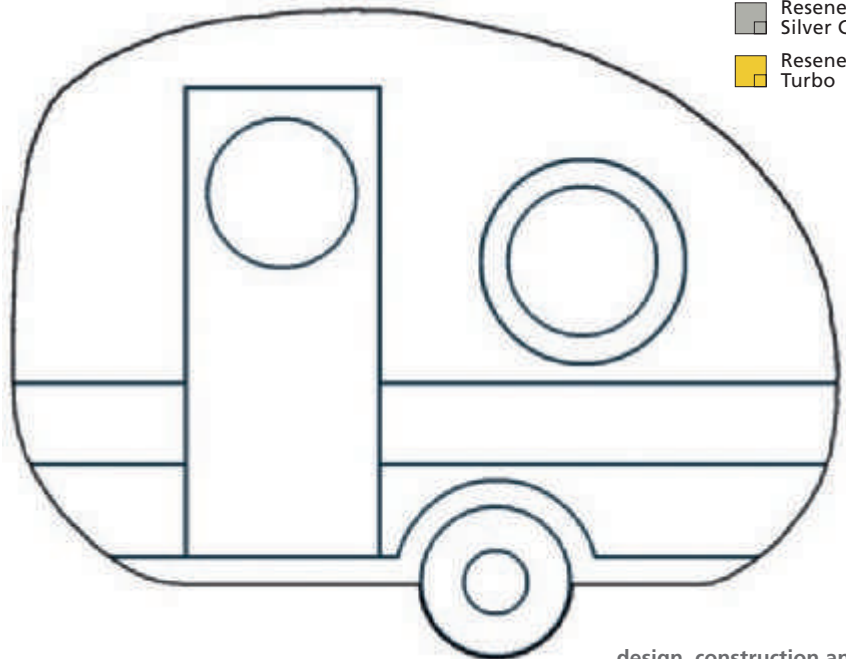
Paint the inside of the caravan (including the inside of the back wall and access door) with two coats of Resene Alabaster then fix the 'towing bracket' to the caravan with glue and a 40mm screw. Paint the outer body of the caravan (including back access door) with two coats of Resene Onepoto.

## v Step 5

Paint two coats on the door, wheel and window trims with Resene Pursuit, the tyre and windows with Resene Black, the side stripe with Resene Alabaster, the towing bracket with Resene Silver Chalice, and curtains with Resene Turbo. Apply two coats of Resene So Cool to the towing bracket followed by two coats of Resene Multishield+ satin. Fix the back access door into position with the hinge and attach the latch hook, as shown.



-  Resene Onepoto
-  Resene Pursuit
-  Resene Silver Chalice
-  Resene Turbo



design, construction and pictures Mark Rayner

## scrubbing up

Employing a house cleaner needs a professional approach.

words Vicki Holder picture istock

Resene  
Paper Doll

Whether you're working long hours, want more time for leisure and family, or are just sick of scrubbing showers, hiring a cleaner can be a blessing. But before you let someone loose on your carpets, consider exactly what you want to achieve.

That's the advice of Katrina Adams of Absolute Domestics, who says her clients have hugely different expectations and requirements.

Many people are just after the basic service, she says, which is getting someone to clean the bathrooms, mop and vacuum floors with a bit of dusting thrown in. "They're happy to wipe their own bench-tops, clean the oven and tidy. Then there are those who want someone to do just about everything, to arrange the sheets on the bed, put on the washing, hang it out, bring it indoors and iron."

Lisa Kennedy from Domestic & Service Personnel, says her agency has three levels of cleaning services – cleaner, house keeper and house manager. You pay according to the variety of duties and level of responsibility. These days a cleaning service can be customised to suit your needs depending on the size of the house, the style of furnishings you have, the number of accessories, children and pets you have and many other variables, says Rod Leonard of @Your Request. A person needs to work out which level of cleaning and care suits their needs, lifestyle and budget.

Lisa Kennedy gets people to list the number of bedrooms, bathrooms and living areas to work out the hours involved. She enquires about pets as some cleaners have allergies. Then she determines whether it's a cleaner, house keeper or manager they require.

Hiring direct lets you stay in charge. On the downside, if cleaners quit, you have to find a replacement yourself. You must also remember, you are an employer and have tax



and accounting responsibilities. If there are problems, you must deal with them yourself.

Going through an agency is slightly more expensive. There are advantages, however. As a rule, agency cleaners have had proper training. Some, including Absolute Domestics, provide a fill-in service when your cleaner is sick or on holiday. If you're not happy with the service, you can ask for a replacement. Most agencies offer a guarantee period of several weeks and some agencies also have public liability insurance for their cleaners.

References are important, Katrina says. "We get a minimum of four for anybody who comes to us. One or two people can lie, but

wrong. Homeowner Justine Morrison recalls the time when a key she'd given her cleaner was stolen along with other clients' keys, an address book and alarm codes of homes where the cleaner worked. Justine suggests homeowners advise their cleaners not to write down the code or identify the key with names and/or addresses.

It's human nature to be nosy. If you leave piles of papers and bills around, you give the cleaner a chance to take a peek. Put those confidential documents away.

Some cleaners are employees. Others own their own franchise and have more of an incentive to do a great job, says Ross Leonard. "If you employ someone from a

## "Cleaners know how to clean, but everyone's expectations are different."

it would be unusual for four. All our cleaners are trusted to work independently. That's important when they are responsible for people's keys. If you're employing privately, you need to do the same. But often people don't have the time or inclination to follow up more than one reference."

Before Lisa Kennedy employs anybody, she phones to check if they have any police or traffic convictions. Those employing cleaners privately should do the same.

Homeowner Mary Bell learned this lesson a few years ago when her long-time, trusted cleaner brought her sister-in-law along – suddenly half the cash from a school fundraiser sausage sizzle disappeared. Mary's son copped the blame at first. Finally, the cleaner was confronted with certain proof of guilt and the money was eventually returned. They were lucky.

Security is a big issue if you're out or working when the cleaner visits. Even if cleaners are trustworthy, things can go

franchise, you know you'll always have the same person turn up for the job."

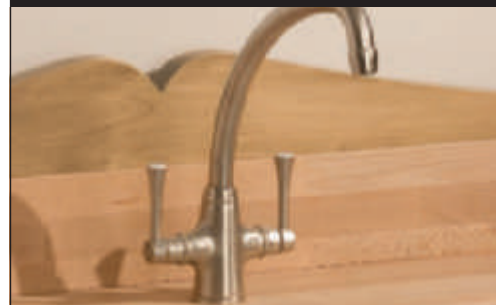
Before the first clean, Absolute Domestics encourages clients to meet with the cleaner, to walk them through room by room and discuss what they want done. "Homes these days vary so much. There are so many beautiful surfaces. You need to instruct your cleaner on how you like those surfaces to be cleaned. Cleaners know how to clean, but everyone's expectations are different."

Some cleaners will bring their own cleaning products while others will use yours. Many people prefer non-toxic, environmentally friendly products.

Once you have found your cleaner, communication is the key to making the relationship work. Stories abound where non-English speaking cleaners struggle to understand their client's wishes and vice versa. Make sure you are clear from the start. Katrina provides checklists of jobs to do in columns to leave no room for misinterpretation. **H**



ENGLISH BUTLER SINKS



DESIGNER & TRADITIONAL TAPWARE & ACCESSORIES



DESIGNER & TRADITIONAL SANITARYWARE



NZ MADE SOLID TIMBER BATHROOM FURNITURE



MODERN & TRADITIONAL FREESTANDING BATHS

Updating your bathroom? Adding on an ensuite?  
Building a new home or apartment? Need inspiration?  
Call or email us today for a free copy of our  
new 270 page catalogue. We'll make your  
bathroom beautiful, whatever you want it to be.

**plumbl ine**  
QUALITY BATHROOMWARE AND PLUMBING PRODUCTS  
P: 04 568 9898  
F: 04 568 6612  
E: sales@plumbl ine.co.nz  
W: www.plumbl ine.co.nz

Products available from merchants nationwide  
or online: [www.productspec.net/plumbl ine](http://www.productspec.net/plumbl ine)



# recipe for relaxation



words Deirdre Coleman  
pictures Frances Oliver

An easy-care garden, great indoor/outdoor flow and a sun-drenched pool. It's the recipe for the perfect outdoor space, and exactly what one family is now enjoying.



When this villa was bought in 2002, the owners had long-term plans for an extensive renovation. Their wish-list included opening the living spaces and kitchen onto the outdoor area, landscaping the property and adding a swimming pool and garage.

It was a multi-stage process that had to be done in a specific and logical order. The garage couldn't be built until the pool had been installed or there would be no access for the digger.

Landscape Transformations was commissioned to design the new outdoor scheme. Designer Sam Lockie says the space was essentially a blank canvas with some lawn and a stand of tall evergreen acmenas on the southern boundary. These were retained for the privacy they provided.

Top of the family's requirements was a heated pool and it has provided a fantastic focal point for outdoor living and entertaining – especially for their two teenage sons.

"The pool gives us endless entertainment in the summer, and it's been easy to maintain. Having a pool encourages the kids to come home and have their friends over, which is what we wanted."

A timber deck overhanging the deep end (2m) of the pool is the ideal spot for a pair of sun loungers. This corner of the property captures the last rays of sun, making it a popular spot.

Says the owner: "Landscape Transformations suggested incorporating this deck and it's been great to hide away the pool cover as well as creating a good 'bombing platform' for the boys." >

**Top and left** An overhanging deck at one end of the pool is the perfect spot for sun loungers.



Three black timber feature screens provide privacy and create a visual full-stop to the garden.

Behind the deck are three black timber feature screens, which provide privacy, create a visual full-stop to the garden, and hide the fact that the property falls away on an angle. "It was just one of the really clever problem-solving ideas that Sam came up with," says the owner.

There were other practicalities to consider, like the siting of the pool and heat pumps.

The black screens help to conceal the pipes to these necessary services. Off to the side of the pool is an area for bin storage and the clothes line.

A black COLORSTEEL® fence provides a simple, uncluttered solution to meeting pool fencing requirements. "With a simple black fence, you tend to look through it, rather than at it," says Sam. "This style of fence, as opposed to glass, which gets dirty quite quickly and is much too modern for this environment, suits the more traditional style of the house."

The area around the house and on either side of the pool is finished in large square concrete pavers. "The pavers are laid as a tile, with a grouted joint on a concrete pad," says Sam. "It provides a nice, solid, long-term solution and they won't move at all."

At the owners' request, Landscape Transformations chose plants that would look good year round and require minimal maintenance. A buxus hedge along the edge of the pool paving provides a clean formal edge. Behind this are port wine magnolias (*Michelia figo*), which can be trimmed and kept under control. With their delicious honey scent they're a lovely addition to the garden.

Three or four eugenia were added along the back boundary, and *Ficus pumila*, has been trained up the wall of the neighbour's garage.

"We're thrilled with the end result," says the owner. "We wanted to achieve good indoor/outdoor flow from the living, dining and kitchen area out to the pool, and it's fantastic."



**Top** A side lawn provides some play space for the owner's two boys.

**Top right** A trio of potted buxus, ficus and mondo.

**Above** A row of acmenas provide privacy – and shelter for the birds.

**Right** Potted Primulas dress the table.

**Far right** The long pool is the perfect dimension for the restricted garden.





### Pool planning checklist

Consult an accredited designer or architect about the pool and surrounding living space for the best result.

Pools must be enclosed by a fence at least 1.2m high that's made from an unclimbable material, and with an automatically closing and latching gate. Use a reputable fencing contractor who knows the regulations. Consider what type of fence would best suit your house and outdoor area.

A cold, shady pool isn't inviting. Think about when you'll use your pool most and choose a spot that has sun at that time.

Try to avoid overhanging trees or install a pool cover to save on cleaning.

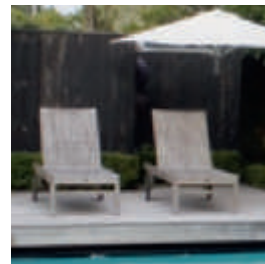
Pools require underground services and piping. Be aware that you cannot dig within 1.5m of any public services such as water mains or sewer pipes. If this is an issue, you'll need to pay for relocation of the public services.

Your site will influence your pool's shape to some degree but consider your needs and lifestyle – for a family, bigger is often better. Include a large shallow end for children to use. If swim training's your thing, a lap pool is the answer.


Your zoning may affect how deep your pool can be, as there are limits to the amount of soil you can remove from your site without resource consent. The pool depth also dictates its proximity to the boundary.

Solar heating, gas heating or heat pumps are different ways to warm your pool and extend its use by another few months each year. Weigh up the options according to your budget.


A pump, filter and sanitising treatment are essential to keep the water healthy. Salt treated pools are becoming popular as they don't irritate the eyes and skin like traditionally chlorinated pools. **H**



Get the look with Resene Waterborne Woodsman tinted to Resene Crowshead.

Resene Crowshead 

Pool fence: COLORSTEEL®

Resene Robins Egg Blue 

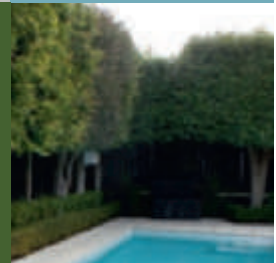


Pavers: Stevensons Veneto honed concrete pavers


Resene Glacier 

Acmena hedging for privacy

Resene Dell 



Get the look with Resene Lumbersider tinted to Resene Foggy Grey in double strength.

Resene Foggy Grey 

Resene Fuscous Grey 

turn the page for two alternative style solutions

# alternative solution



^ The house weatherboards are Resene Powder Blue and the trims are Resene Wan White and Resene Zibibbo.

Resene Sandspit Brown

illustration Bruce Bryant



<

Japanese sago palm (*Cycad revoluta*)

>

Stonedcladd Basalt waterwall

Original Stone  
www.originalstone.co.nz  
0800 157 340





>


Louvretec custom-made pergola


www.louvretec.co.nz  
0800 LOUVRES



Resene Lush 

 Resene Powder Blue

 Resene Wan White

 Resene Zibibbo



<

Rinnai Impression outdoor fireplace

www.rinnai.co.nz  
0800 746 624

>

Bromeliad and  
ligularia (*Ligularia reniformis*)



**Sandra Batley**  
of Flourish Gardens suggests  
this alternative scheme:

This scheme is to make the outdoor area highly usable, year round, with the addition of a pergola out from the house, timber bench seating and an outdoor fireplace. Interest is added to the long pool with a dramatic two-metre-high stone wall, over which water flows. The pool fencing has been replaced by seamless glass, while the paving has been retained. Lush subtropical planting includes mature kentia and bungalow palms rising up behind the wall and edging the perimeter of the garden. Low plants such as cycads, red cannas and bromeliads are placed nearer the seating area.

*Sandra*

phone 09 414 5649 mobile 0275 109 872 email sandra@flourishgardens.co.nz

# alternative solution

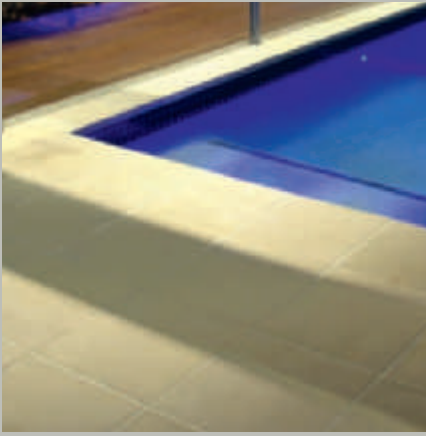


^ Weatherboards are Resene Archive Grey, the house trims are Resene Barely There and the water feature wall is Resene Identity.

Resene Barely There

illustration CGC Landscapes





Artisano pavers in colour latte

Stone Directions  
www.gbsnz.co.nz  
09 444 7353

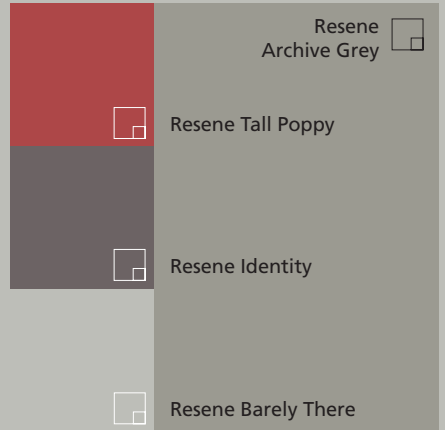
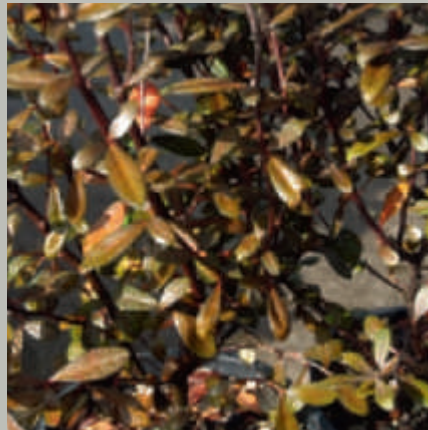


Aluminium lounger

Bbqs and More  
www.bbqsandmore.co.nz  
09 579 6699



Corokia 'Frosted Chocolate'



Resene Archive Grey



Resene Tall Poppy



Resene Identity



Resene Barely There



Rhododendron vireya 'Java'



Sheer Descent water feature

Stone & Water World  
www.stoneworld.co.nz  
09 525 3142



This design is divided into rooms to give a number of experiences. The pool is now ornamental with small decks that appear to float on the surface. These decks are the only access to the private sanctuary garden in the foreground. The main outdoor living area has a courtyard around a glass-topped fire pit and a circular gazebo linked to the house. The enclosed area to the right is a woodland-style retreat for afternoon or morning tea with the soothing sound of the water feature and rustling leaves. Hidden from view at the back of the garden is a barbecue area and a formal sculpture garden to be viewed from inside the house.

David Clayton-Greene  
of CGC Landscapes suggests  
this alternative scheme:

phone 07 577 6444 mobile 021 511 049 email admin@cgclandscapes.co.nz

# bedside magic

Give a plain bedside cabinet a makeover using your favourite images!

## You will need:

- Resene testpots from the KidzColour range: Resene Yabbadabbadoo, Resene Tutti Frutti, Resene Splat, Resene Blue Jeans, and Resene Hopskotch
- Paint brushes
- Resene Aquaclear
- Bedside cabinets – recycle existing ones or buy new (ours is from Target Furniture)
- Selection of magazines, comic books, stickers, decorative papers, scrap booking paper, wrapping paper
- Sheet of backing paper
- Scissors and ruler
- Glue stick
- Access to colour photocopier

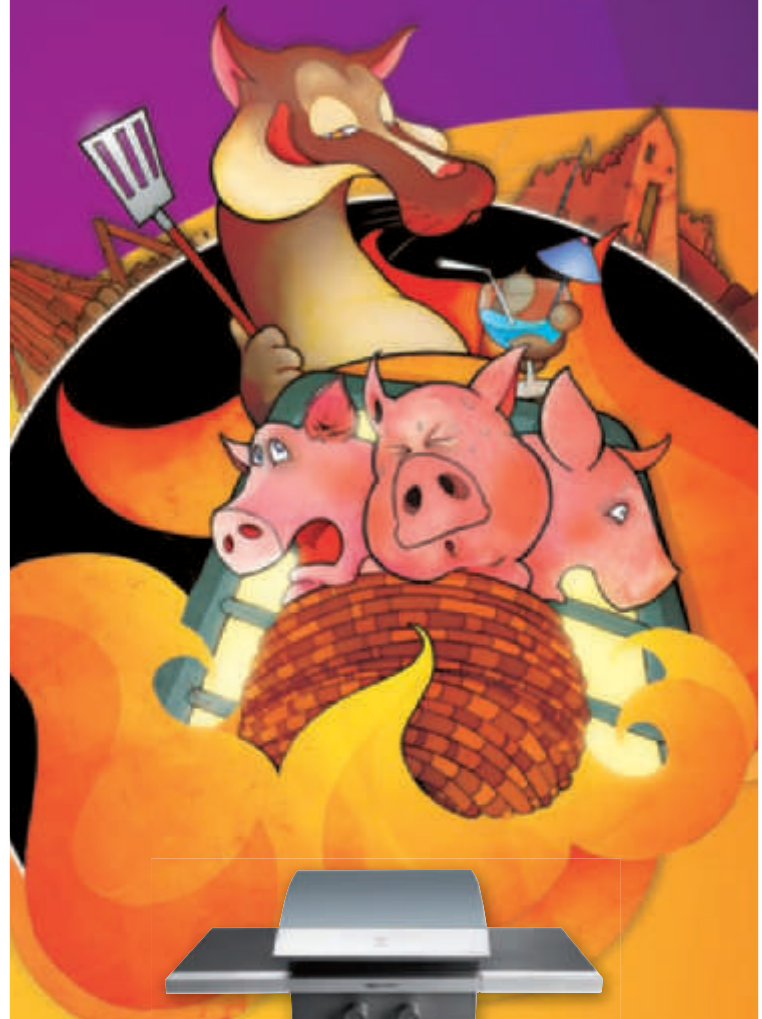
- Resene Blue Jeans
- Resene Hopskotch
- Resene Splat
- Resene Tutti Frutti
- Resene Yabbadabbadoo



## To make:

1. Wipe down the cabinet with a damp cloth to remove any dust or dirt. If you're recycling old cabinets you may need to sand off old paint or varnish so check with Mum or Dad before you start. Undercoat if necessary. Remove handles. Paint the cabinet. We used Resene Yabbadabbadoo on the top, base and drawer handle; Resene Splat on one side panel; Resene Tutti Frutti on the other side panel and door front; Resene Blue Jeans on the drawer; and Resene Hopskotch on the cupboard handle. It's easiest to paint the handles by placing the screw into the back of each and sticking them into a block of polystyrene. Let the paint dry!
2. Measure the top, cupboard front and drawer front and decide how far in from the edges you want the collage to be. We went 5cm in from the edges. Work within the size of a sheet of A3 paper, so you can photocopy easily later. Sort through magazines and papers and cut out any pictures you like. Cut out squares and rectangles of decorative papers to add into the mix and use the glue stick to paste them to the backing paper. Add any stickers onto it.
3. Use a colour photocopier to make a couple of copies of your collage. This way you can use all sorts of thicknesses and types of paper and it won't matter later. Measure and rule up the three pieces of paper to go on the cabinet top, cupboard front and drawer front. Cut out carefully.
4. Stick the three pieces of paper onto the cabinet and allow to dry fully.
5. Paint a couple of coats of Resene Aquaclear over the cabinet top, cupboard front and drawer front to protect your collage. Later, if you want a change, all you have to do is repaint the cabinet, stick a new collage over the top of the last one and seal it!

Are you still huffing  
and puffing over  
your old BBQ?



## **Rinnai** | BBQs

Rinnai makes cooking a pleasure, with super efficient, innovative and sleek looking BBQs to suit your needs, whether it's a dinner party for twenty, a rotisserie for the family or just a wee fry-up. For more information about our range of products for your home, visit [www.rinnai.co.nz](http://www.rinnai.co.nz) or call 0800 RINNAI (746624)

3



4



5



# trailer know-how

Backing a trailer may be a bloke's rite of passage but what else is there to know about these handy vehicles?

Got a load to haul, rubbish to dump or furniture to move? Trailers come in all shapes and sizes, and are readily available to hire.

Not many of us actually own trailers. For a start, we don't use them regularly enough and then there's the problem of where to store them when not in use. Hiring a trailer is often the best solution, and if you do so from a reputable outlet like Hirepool, the first few checks listed below will have already been made for you.

- > Check that your trailer has a current warrant of fitness and registration.
- > Check that all lights are in working order, and know that if your load obstructs essential lights you must fix temporary lights to comply with legal requirements.
- > Ensure the tow rating of your vehicle and the trailer coupling is sufficient for your load and compatible with the tow ball size.

These are guidelines only and we would recommend all users consult Land Transport NZ ([www.landtransport.govt.nz](http://www.landtransport.govt.nz)) for their comprehensive guide to safe loading and towing. The ultimate responsibility for the trailer, vehicle and load rests with the driver of the vehicle.



## ^ Tip 1

Ensure that the safety coupling and lights are correctly connected and in working order before starting to load your trailer.

See [www.hirepool.co.nz](http://www.hirepool.co.nz) for more information.

## Tip 2 >

It is important to use the right trailer for your load, for example a car transporter is designed to distribute the weight of the vehicle without stressing the tow bar and will often feature mechanisms like tilting decks and winches to help the operator to safely load the vehicle.



words and pictures Hirepool



### < Tip 3

To load your trailer safely, spread the load out evenly, with heavier items towards the bottom of the deck. Also position loads as close to the axle as possible. Ensure your load is securely restrained by lashings (webbing straps, ropes, chains) or clamps anchored to the trailer in the appropriate places.



### Tip 4 >

If your load is likely to blow around, for example garden waste, it should be covered.



### ^ Tip 5

Remember that a load will try to move when you are breaking, accelerating, turning or negotiating speed humps so ensure it is secured against all directions of movement.

-  Resene Flashback
-  Resene Gondwana
-  Resene Kandinsky

### Tip 6 >

If your load extends more than 200mm beyond the sides of the trailer or more than one metre beyond the front or back of the vehicle, you must attach a suitable warning device, like a brightly coloured cloth bag.



# the ultimate decorating card just got better!



As well as the discounts on purchases at Resene ColorShops, you can now present your Resene ColorShop Card elsewhere and enjoy discounts on a range of products and services from magazines, artwork and tiles through to housewashing. Simply present your Resene ColorShop Card or quote your card number to take advantage of these great offers. Offers are valid until 31 March 2010

and are not available in conjunction with any other offer, discount or promotion. All companies reserve the right to amend or update their offers at any time.

For more information on all these great offers and more, see [www.resene.co.nz/colorshopcardoffers.co.nz](http://www.resene.co.nz/colorshopcardoffers.co.nz).

## subscribe to Dish

Subscribe to *Dish*, the magazine designed to inspire you to cook and eat good food. One year (6 issues) for only \$39.95. Go to [www.dish.co.nz](http://www.dish.co.nz) and download the Resene ColorShop Cardholder special offer.

Offer starts with the next available issue.

Resene Heirloom



## subscribe to NZ Fishing World

Subscribe to *NZ Fishing World* and get the inside knowledge on how to catch more fish, what to use and the best places to go to do it.

One year (6 issues) for only \$45.

Go to [www.nzfishingworld.com](http://www.nzfishingworld.com) and download the Resene ColorShop Card special offer.

Offer starts with the next available issue.

Resene Onepoto

## tile warehouse

Tile Warehouse offers 10% discount off all tiles and tile related products such as Devi Underfloor heat mats, Aquamix cleaning and maintenance products and Construction Chemicals glues and grouts.

0800 289 845

[www.tilewarehouse.co.nz](http://www.tilewarehouse.co.nz)

Discount does not apply to benchtops or vanities.



Resene Thorndon Cream



## \$20 voucher

\$20 off any house, path or deck wash.

0800 JT WASH (0800 58 9274)

[www.jtpropertywash.co.nz](http://www.jtpropertywash.co.nz)

Available to Resene ColorShop Cardholders only. Not available in conjunction with any other offer.



Offers are valid in New Zealand to Resene ColorShop Cardholders only until 31 March 2010 and are not available in conjunction with any other offer, discount or promotion. All companies reserve the right to amend or update their offers. See [www.resene.co.nz/colorshopcardoffers.co.nz](http://www.resene.co.nz/colorshopcardoffers.co.nz) or your Resene ColorShop for full details.

## hirepool

Renovating your home is made easy with Hirepool. Whether your job is big or small Hirepool has a solution to make the job easier. And now it is even better value with a 15% discount for Resene ColorShop Cardholders. Visit your local Hirepool branch – 56 nationwide. Hirepool, hire the experience.


[www.hirepool.co.nz](http://www.hirepool.co.nz)




## Hydroflow

DISTRIBUTORS LTD

Hydroflow offers a 5% discount on any purchase to Resene ColorShop Cardholders.

Resene Tea 



Resene Paper Doll 

## GLENGARRY

### glengarry

Get a discount off Glengarry's extensive range of quality wine, beer and spirits every time you shop.

0800 733 505

[sales@glengarry.co.nz](mailto:sales@glengarry.co.nz)

[www.glengarry.co.nz](http://www.glengarry.co.nz)

Discounts vary by alcohol type and are not available in conjunction with any other offer.



## TILEWORKS

Providing creative, sustainable, building surfaces

### tileworks

Tileworks offers a 15% discount on any purchase to Resene ColorShop Cardholders.

Resene Mongoose 



## no interest no repayments

Carpet Court offers no interest and no repayments for six months on purchase of carpet.

0800 787 777

[www.carpetcourt.co.nz](http://www.carpetcourt.co.nz)

Credit and contract conditions apply, excludes close outs and seconds, available at participating stores, check availability with other promotions.

Resene Vibe 

## 15% off

Get 15% off the recommended retail price on any purchase (includes custom framing).

0800 10 10 15

[artforartssake@xtra.co.nz](mailto:artforartssake@xtra.co.nz)

Offer excludes sale or already discounted items, Art for Art's Sake loyalty cards and gift vouchers.

## Art for Art's Sake

THE ART OF LIVING

Resene Glacier 

And don't forget to use your Resene ColorShop Card when you're shopping at your local Resene ColorShop and enjoy savings on a wide range of paints, wallpaper and decorating accessories. If you don't have a Resene ColorShop Card, you can sign up online at [www.resene.co.nz](http://www.resene.co.nz) (NZ) or [www.resene.com.au](http://www.resene.com.au) (AUST).



## trends magazine


Subscribe to the *Trends Home Series*, an international showcase of ideas for home design.

*Trends* offers Resene Cardholders a one-year subscription to the Home Series for \$85 and you will receive a \$20 Resene Voucher.




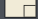
Your one year subscription will include the following:

- 2 editions each of Renovation Trends, Kitchen Trends, Outdoor Living Trends
- 4 editions of New Home Trends and 1 edition of Bathroom Trends. To subscribe go to [www.trendsideas.com/go/resenespecial](http://www.trendsideas.com/go/resenespecial)

[www.trendsideas.com](http://www.trendsideas.com)

Resene Calypso 

Offers are valid in New Zealand to Resene ColorShop Cardholders only until 31 March 2010 and are not available in conjunction with any other offer, discount or promotion. All companies reserve the right to amend or update their offers. See [www.resene.co.nz/colorshopcardoffers.co.nz](http://www.resene.co.nz/colorshopcardoffers.co.nz) or your Resene ColorShop for full details.

- Resene Black Russian 
- Resene Blue Bark 
- Resene Primetime 
- Resene Villa White 

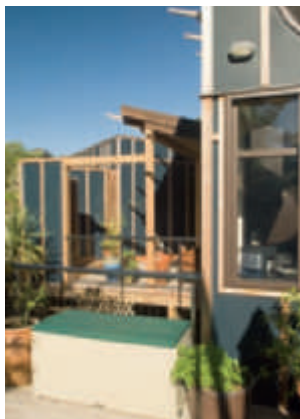


## eye-catching exteriors

Architectural detailing, well-chosen colour and dramatic features make these three house exteriors different but quite special.

▲ The dramatic entry to this Christchurch house, designed by Colin Hill of Hill + Miles Architecture, is made all the more striking with the column of electronic louvers, a play on materials and discrete yet effective lighting. The double-height centre block forms the core of the house, running through it from front to back. Painted in Resene Villa White, it is offset by weatherboards either side painted in Resene Black Russian, detailing in galvanised steel, concrete blocks and a redwood front door. The house is also angled off the front boundary to break up the very linear look many contemporary homes can have if placed straight on.

➤ Don Nelson of Don Nelson Architecture went to “great pains and deliberation” to decide on the Resene Blue Bark for the exterior of his own harbour-side Auckland house. Now he loves it. “It has a bit of green in it so blends beautifully with the trees, and changes colour depending on the light. It goes quite dark on a cloudy day but the sun brings out the colour.” He used Resene Cool Colour paint to protect the substrate, which is Eterpan panels. The joints are finished with cedar battens, which are



left to weather naturally to a silvery grey. The house design has deliberate nautical references with porthole windows and wire-rigging balustrades.

▼ This cute cottage is part of a larger gathering of holiday homes designed by Wellington-based architectural designer Nicola Habbitts of Design Habbitts. At Turangi, there’s also a double-storey house split into two apartments, all sharing this whimsical stone fire pit – great for toasting marshmallows, and sitting around on a cool evening. Dubbed The Vine, the one-bedroom cottage has vertical cedar on the sides, left to weather naturally, as well as weatherboards on the front, painted in a specially mixed colour, Resene The Vine (code TV061). [H](#)





# from you...

Your views and news

## Growing together

Community group, Project Lyttelton, and Soil and Health Canterbury had an exhibition garden at the Christchurch 2009 International Ellerslie Flower Show, showcasing organic gardening, community gardening and recycling. We used recycled iron to create the fence (cut in the outline of the Port Hills crater rim) and some simple planters. The iron came in lots of dull and chipped colours so it was badly in need of paint.

We were extremely thrilled when we won a bronze medal and certainly Resene was part of the team of people that made it happen. Thank you very much for that!

– Bettina Evans, Project Lyttelton/Soil and Health Ellerslie Team



## Masking it

I thought you might like to know that Rotary Park School students in Dunedin have made a collection of Dr Seuss book character masks using Resene paints and masks from Maskworx. The children are so proud!

– Annette Rose, Maskworx



## Beachy makeover

Just thought you might like to see some photos of the interior of our house. We recently painted our wooden walls in Resene Sea Fog – it looks stunning! Our challenge was to change our alpine-style dark, aged, orange wood walls into a fresh beach house style. I did a fair bit of research online and could not find anywhere images of wood of our style painted. As soon as I walked into our house I instantly loved it. It has been transformed.

– Anna Tunnell; congratulations to our winner this issue.



## Not just a pipe dream

When faced with the question, ‘why we make art?’, Room 11 at Te Mata Primary School [Havelock North] not only studied famous and favourite artists but studied colour and how it affects us.

I wanted the children to produce a piece of work for our community and donate it to our new garden. We learnt how to write formal letters and wrote to our caretakers, gardeners, principal and local plumbers and Resene, of course, asking for help with resources and permission. We combined all the knowledge and inspiration we had learnt and this was the final result!

The children worked with a buddy taking turns to paint and hold the pipes upright. They’ve been an absolute hit in the school.

– Catherine Jurgens, Te Mata art teacher



We look forward to receiving your letters and queries, and would particularly like to see any weird and wonderful ways you have used Resene paints. The best letter will win a Get Decorating Kit from Resene.

Mail us at: Hey, Habitat, Resene Habitat Magazine, PO Box 38242, Wellington Mail Centre, New Zealand. Or email: advice@resene.co.nz with Hey, Habitat in the subject line.

Resene Flashback  
Resene Glacier

# not blind to brights

Broadcaster Geoff Bryan loves bright shades... despite being partially colour blind.

TVNZ sports broadcaster and radio newsreader Geoff Bryan is, in fact, partially colour blind. Luckily, his wife Jan helps out not only with decorating colours but also with his wardrobe.

## Tell us about being partially colour blind.

When I was about 14, one of my school books had diagrams with circles and dots, and numbers that we were supposed to be able to see. I thought it was a trick question because I could only see one number, and even then I got it wrong.

I can see all colours but not subtle shades of colour. It's a standard boy colour-blind thing where you have the most trouble with greens, reds and oranges. Not long after Jan and I were married I was looking for a grey shirt until Jan pointed out that it was, in fact, bottle green.

## What is your favourite colour and why?

Well, it's not green! I enjoy full rich colours simply because I can see them. Deep red is a particular favourite.

## What is your favourite decorating colour or combination of colours and why?

In 25 years of marriage, it's not a decision I've been called upon to make! We have a couch with a large red and green pattern that's a favourite. I like having bold colours around me because I can't see the subtleties in, for example, different types of whites or pale neutrals. I suppose I could choose to play it safe by sticking to neutrals but that's just not me.

## Have those choices changed during the years? If so, what influenced that?

It's hard enough to find the colours I like in the first place, I'm not going to rush out and change them!

## Is there a colour you would never use in your own home?

Lime green wouldn't be starter, and neither would bright orange.

## What do you love or hate about the recent (but waning) trend for neutral colours, white-on-white?

I find neutral colours too stark. I enjoy the richness of colour, rather than what's in fashion. My wife Jan has a theory that with the slower housing market more people will stay put and feel that they can put more personality and colour into their homes, and not just play it safe or keep it anonymous for resale.

## What are your three favourite colours from Resene's new The Range 2010?

I find it particularly difficult to see the subtleties in colours when they are sitting right next to each other, so the one thing I found very helpful was the grey viewing frames that come with the fandeck.

When I isolate a colour, I can see it much more easily.

My favourite colours off The Range 2010 are strong rich colours – Resene Pohutukawa, Resene Bullitt and Resene Gondwana. **H**



-  Resene Bullitt
-  Resene Gondwana
-  Resene Pohutukawa
-  Resene Triple Pearl Lusta

# *Fresh* as a daisy



Freshen up your next paint job with **Resene Zylone Sheen VOC Free**, which combines the popular low sheen of Resene Zylone Sheen without the unwanted volatile organic compounds (VOCs) for better indoor air quality.

Improved air quality can help prevent headaches, asthma, nausea, respiratory complaints and allergic reactions. And to suit all tastes, Resene Zylone Sheen VOC Free is available in a wide range of popular Resene colours using Resene non VOC tinters.

Now that's fresh thinking.

Available exclusively from Resene.



RES-2008  
GECA 23-2005—  
Architectural and Protective Coatings

# Resene

the paint the professionals use



Water Based Paint  
Lowest VOC Content

Resene. Licensed  
products since 1996

1800 738 383  
[www.resene.com.au](http://www.resene.com.au)

0800 RESENE (737 363)  
[www.resene.co.nz](http://www.resene.co.nz)



# SHADES OF SPRING

*Luxaflex*<sup>®</sup>

WINDOW FASHIONS

Available from your nearest LUXAFLEX<sup>®</sup> licensee. For a nationwide list of licensee retailers visit [www.luxaflex.co.nz](http://www.luxaflex.co.nz)

Colours may vary from those shown. © Registered trademarks of Hunter Douglas Ltd or New Zealand Window Shades Ltd.